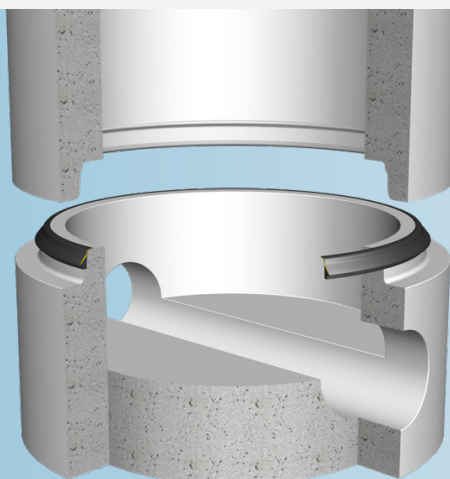


Forsheda 118

Pre-lubricated seal
for concrete manhole
systems



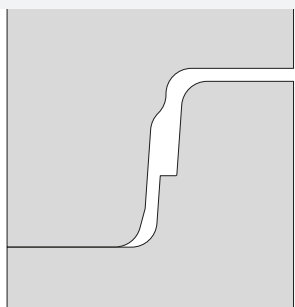
SEAL DESIGN AND FUNCTION

Forsheda 118 is a pre-lubricated sliding seal that is stretched onto the spigot of the manhole. Additional lubricant is not required for joint assembly.

The joint design is standard in many countries. A drawing is available from Trelleborg Pipe Seals on request.

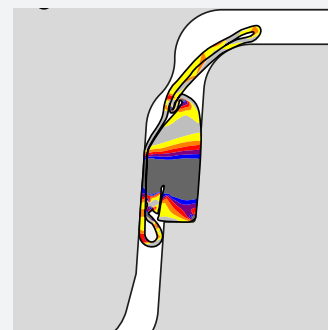
The seal is designed with a sliding mantle which is internally lubricated. The mantle is fully closed to ensure the lubricant stays in place. During installation the thin mantle slides over the body of the seal. This design permits installation with very low force, as there is no friction between rubber and concrete.

The special design of the joint and seal make the system easy to centre during jointing.



SEAL PERFORMANCE

The Forsheda 118 seal meets all relevant current European standards. Joint performance is dependent on dimensional accuracy and surface finish of socket and spigot. Test reports are available from Trelleborg Pipe Seals on request.



MATERIAL

Synthetic SBR or EPDM rubber

Hardness 40±5 IRHD

Approved in accordance with EN 681-1

Protected against ozone

Oil resistant grades are available on request

QUALITY ASSURANCE

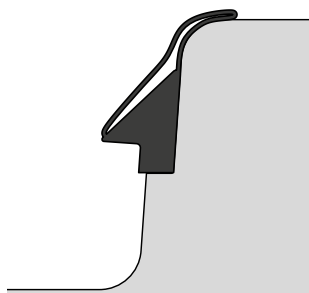
ISO 9001

British Standard "Kitemark"

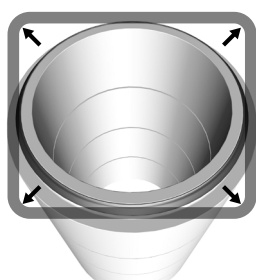
CE-marking

JOINT ASSEMBLY

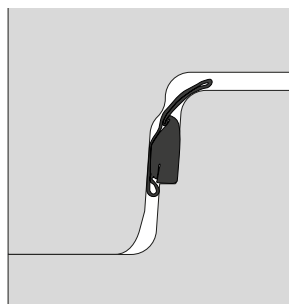
Stretch the seal onto the spigot and position against the shoulder.



Equalize the stress in the seal by lifting and releasing at a few points. The seal must sit evenly against the spigot shoulder all around the manhole.



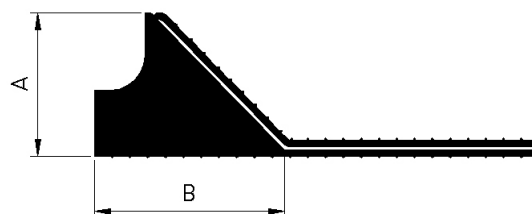
Lubrication of the socket or spigot is not required. Centre the joint and assemble. The position of the seal in the final manhole joint is shown.



If re-joining is required ensure the sliding skin is drawn back to position as shown in the first picture.

SEAL MARKING AND BOX LABELS

Each seal is marked with seal dimension and the date of manufacture. The box is labelled with the corresponding data.



EXAMPLES OF SIZES (MM)

A - mm	B - mm	Joint gap
18.0	25.0	10.4±1.4
20.0	26.5	11.5±1.5
21.5	30.0	12.5±1.6
22.0	30.0	12.7±1.7
24.0	33.0	13.5±2.0
28.0	38.0	16.0±2.5

Please contact Trelleborg Pipe Seals for technical advice and joint design recommendations to meet your performance requirements.

Manholes and pipes with Forsheda 118 shall always be laid in accordance with applicable standards and regulations.

Examples of authorities Trelleborg Pipe Seals cooperates with:



WWW.TRELLEBORG.COM/PIPE-SEALS