

## Vieser One floor drain DN50 1x32 extra low


**NO: Vieser One gulvsluk DN50 1x32 ekstra lav**

Det ekstra lavtbyggende Vieser One horisontale gulvsluket er blandt de laveste horisontalsluk på markedet, med gjennomstrømming på 1,2 l/s.

Den lavtbyggende konstruksjonen gir merkbare fordeler såvel ved rehabilitering som i nybygg. Takket være den effektive gjennomstrømmingen kan sluket anvendes både sammen med dusj og badekar, og sluket er kompatibel med alle Vieser-slukrister og forhøyingsringer.

Pakken inneholder gulvsluk, beskyttelsesdeksel, vannlås, pakning, skrudd klemring, rund rist og skjæreverktøy.

**EN: Vieser One floor drain DN50 1x32 extra low**

The Vieser One horizontal extra low floor drain is one of the lowest floor drains on the market, with a flow rate of 1.2 l/s

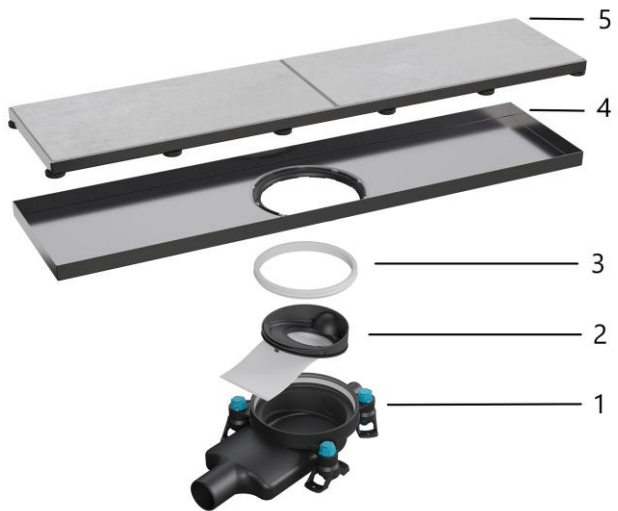
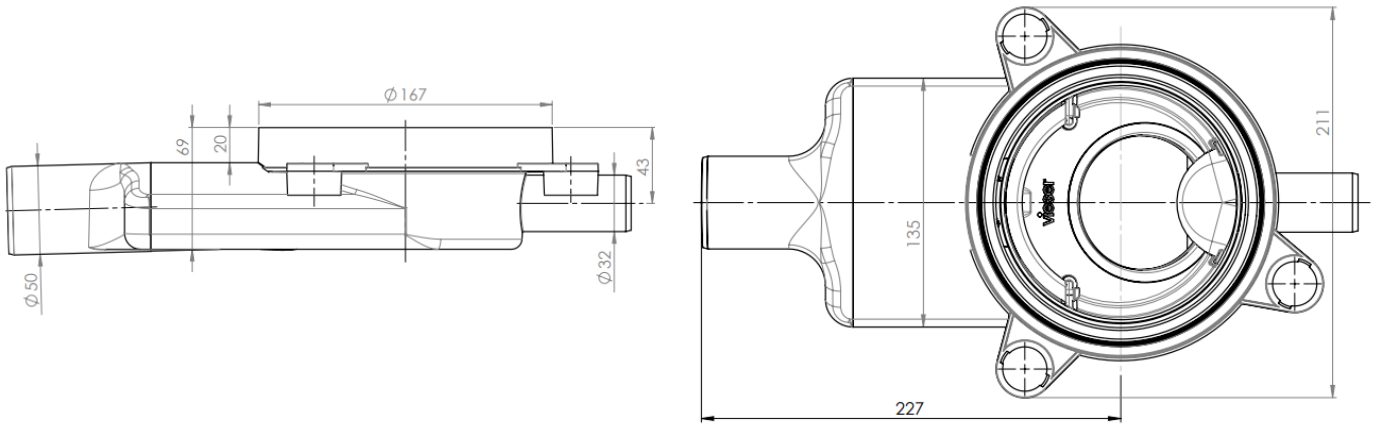
The low structure is a significant benefit in both renovations and new construction. Thanks to the efficient flow rate, the drain is suitable for use in both showers and bathtubs, and it is compatible with all Vieser drain covers and extension rings.

The package includes the drain, water trap, casting shield, screw fix clamping ring, round grating, and a cutting tool.

**Technical specifications**

<b>Vieser No.</b>				<b>6004531</b>
<b>LVI No.</b>				-
<b>RSK No.</b>				-
<b>NRF No.</b>				<b>3410989</b>
<b>EAN</b>				<b>6430066742349</b>
<b>Pakkaus (laatikko/lava)</b>	<b>Förpackning (låda/pall)</b>	<b>Pakke (boks/pall)</b>	<b>Package (box/pallet)</b>	10/120
<b>Materiaali</b>		<b>Material</b>		PP
<b>Virtaama</b>	<b>Flöde</b>	<b>Strømningshastighet</b>	<b>Flow</b>	1,2 l/s

PRODUCT DATASHEET



- 5 Vieser Line cover
- 4 Vieser Line tray
- 3 Vieser clamping ring
- 2 Vieser membrane water trap
- 1 Vieser One floor drain extra low

