

# spirit.

## pro 55

## technical data.

### gluedown

**plank:** 1520 × 237 mm – box: 10 planks (=3,602 m<sup>2</sup>) – Pallet: 72 boxes (=259,37 m<sup>2</sup>)

**tile:** 914,4 × 609,6 mm – box: 7 (=3,902 m<sup>2</sup>) – Pallet: 58 boxes (=226,31 m<sup>2</sup>)

### click comfort

**plank:** 1511 × 228 mm – box: 6 planks (=2,067 m<sup>2</sup>) – Pallet: 64 boxes (=132,30 m<sup>2</sup>)

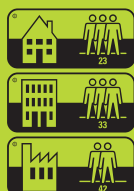
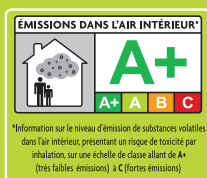
**tile:** 914 × 610 mm – box: 4 (=2,23 m<sup>2</sup>) – Pallet: 54 boxes (=120,43 m<sup>2</sup>)

### product specifications.

		pro 55 gluedown		pro 55 click comfort	
		plank	tile	plank	tile
Total thickness	EN ISO 24346	2,5 mm	2,5 mm	4,5 mm + 1 mm	4,5 mm + 1 mm
Pad (IXPE)				1 mm	1 mm
Wear layer	EN ISO 24340	0,55 mm	0,55 mm	0,55 mm	0,55 mm
Total weight	EN ISO 23997	4,95 kg/m <sup>2</sup>	4,95 kg/m <sup>2</sup>	9,3 kg/m <sup>2</sup>	9,3 kg/m <sup>2</sup>
Usage classification	EN ISO 10874	23/33/42	23/33/42	23/33/42	23/33/42

### test results.

Underfloor heating	EN ISO 12524	suitable – max. 27°C (80°F)/ electrical floor heating systems: max 60 W/m <sup>2</sup>					
Castor chair	EN ISO 4918	pass	pass	pass	pass		
Fire resistance	EN ISO 13501-1	Bfl-s1	Bfl-s1	Bfl-s1	Bfl-s1		
Light fastness	EN ISO 105-B02	> 7	> 7	> 7	> 7		
Thermal resistance	EN 8302	0,010 m <sup>2</sup> K/W	0,010 m <sup>2</sup> K/W	0,033 m <sup>2</sup> K/W	0,033 m <sup>2</sup> K/W		
Chemical resistance	EN ISO 26987	OK	OK	OK	OK		
Residual indentation	EN ISO 24343-1	<0,1mm	<0,1mm	<0,1mm	<0,1mm		
Slip resistance	DIN 51130	R10	R10	R10	R10		
	EN ISO 13893	class DS	class DS	class DS	class DS		
Sound reduction: impact sound	EN ISO 717-2	3 dB	on Fastec 11 dB	3 dB	on Fastec 11 dB	20 dB	20 dB
Reflected walking sound	EPLF draft 021029-3-2004	25 SONE (67% sound reduction)	on Fastec 24 SONE (69% sound reduction)	25 SONE (67% sound reduction)	on Fastec 24 SONE (69% sound reduction)	37 SONE (52% sound reduction)	37 SONE (52% sound reduction)
Dimensional stability	EN ISO 23999	< 0,15 %	< 0,15 %	< 0,15 %	< 0,15 %	< 0,15 %	
Residential warranty		25 y	25 y	25 y	25 y	25 y	
Commercial warranty		10 y	10 y	10 y	10 y	10 y	
Formaldehyde	EN ISO 717-1	E1	E1	E1	E1	E1	
Lock strength	EN ISO 10582	\	\	> 5 kN/m	> 5 kN/m	> 5 kN/m	



SPIRIT PRO 55  
GLUEDOWN



SPIRIT PRO 55  
CLICK COMFORT

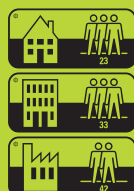
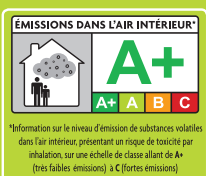


# spirit.

## pro 55

### Underlay

Material		IXPE
Thickness		1 mm
Compressive strength	EN 826	117 kPa
Punctual conformability	CEN TS 16354: 12-2013	0.52mm
Water absorption	EN 12087	0.6%



SPiRiT PRO 55  
GLUEDOWN



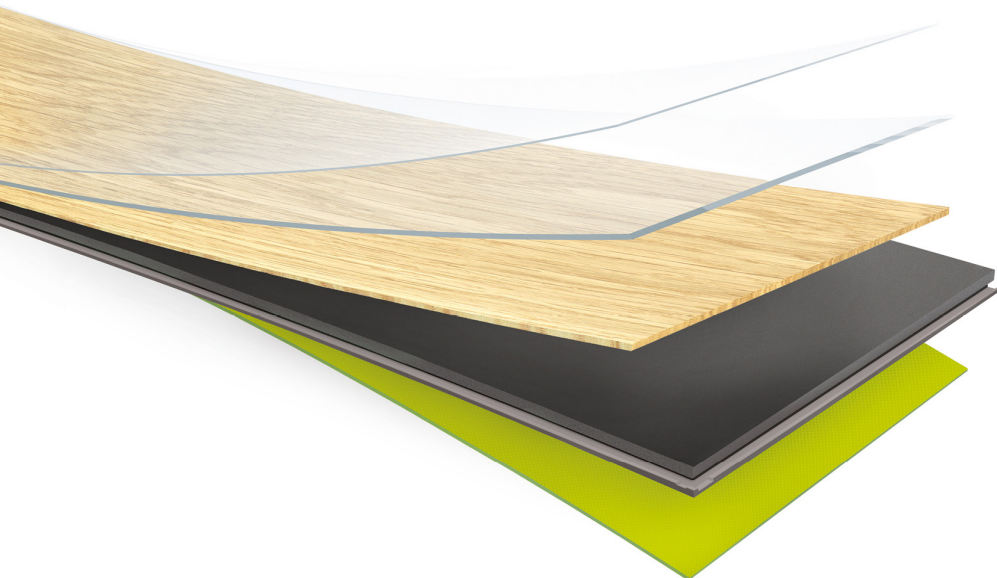
SPiRiT PRO 55  
CLICK COMFORT



# PRO 55

# spirit.

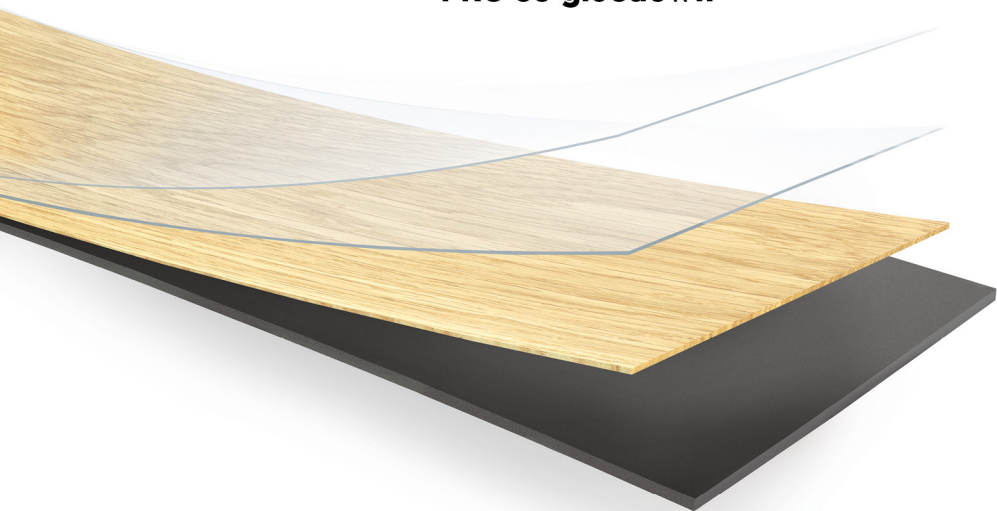
## spirit. PRO 55 click comfort



- 1 Protective PU lacquer
- 2 Wear layer 0,55 mm
- 3 Decorative printfilm
- 4 Rigid board
- 5 Integrated underfloor (1 mm)

Total thickness: 4.5+1 mm

## spirit. PRO 55 gluedown



- 1 Protective PU lacquer
- 2 Wear layer 0,55 mm
- 3 Decorative printfilm
- 4 PVC backing layer

Total thickness: 2,5 mm