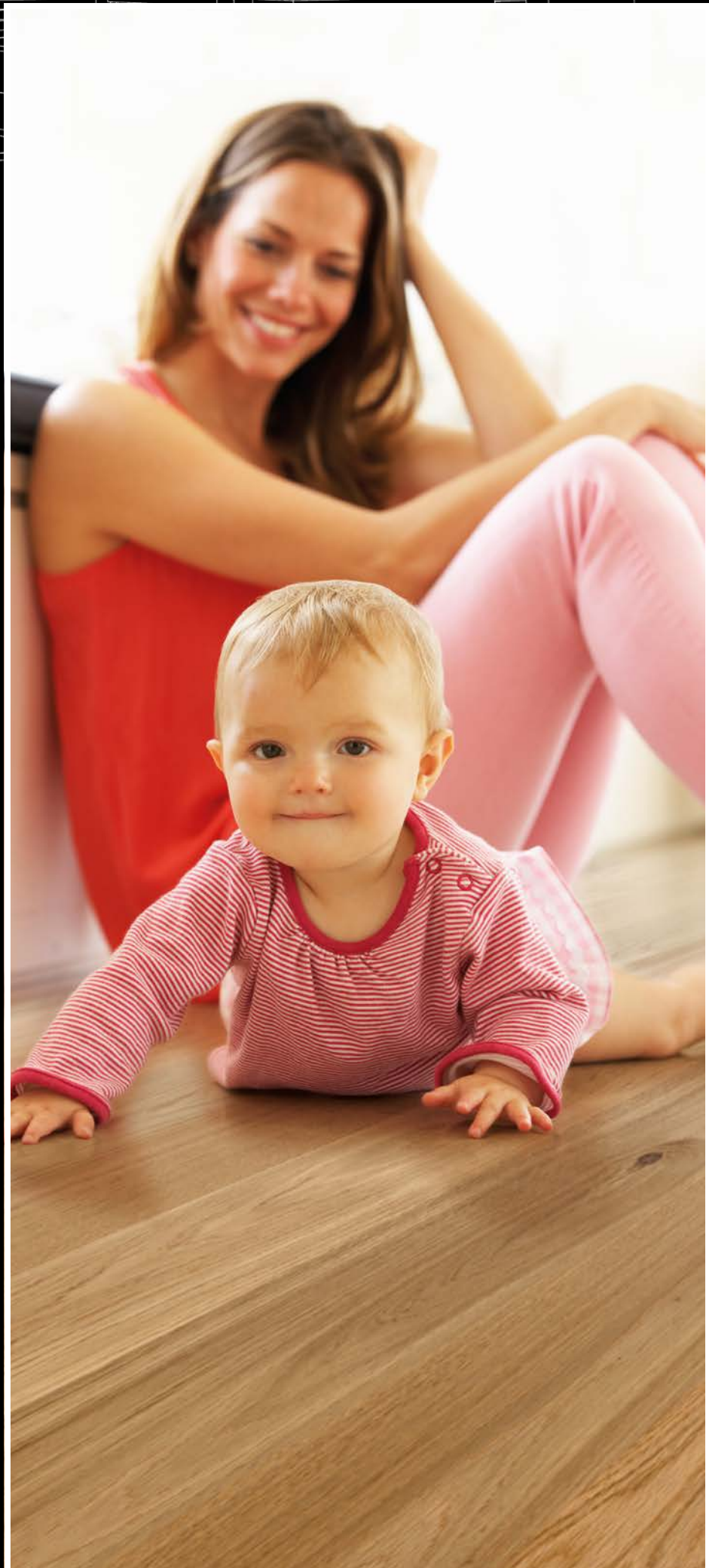
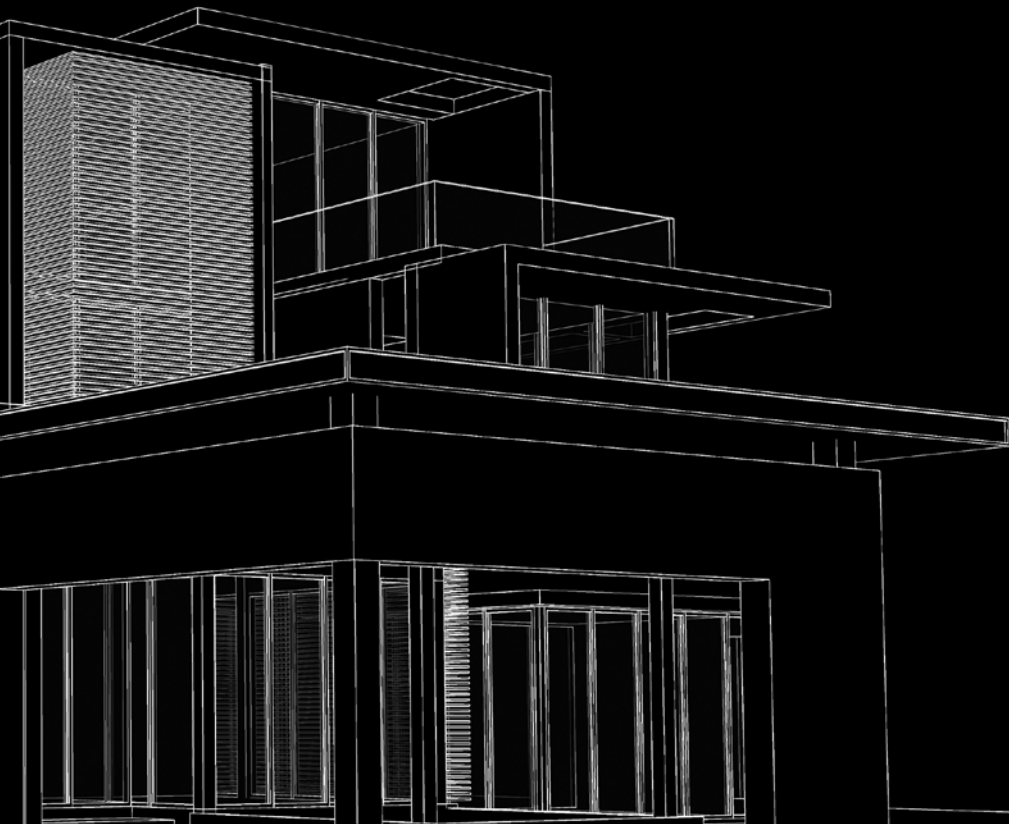


Monteringsanvisning OPUS parkettgulv

Installation instructions OPUS parquet flooring



Opus Floor

EN Always store the hardwood flooring in dry conditions for 48 hours and do not open the cartons until just before use. Quality controllers have sorted and graded the parquet. Should there be any doubt concerning grading and/or visual defects, it is important that claims be made prior to the flooring being installed.

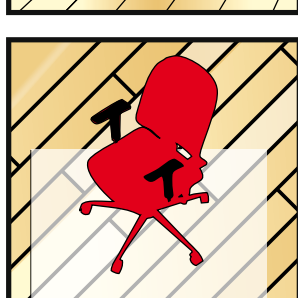
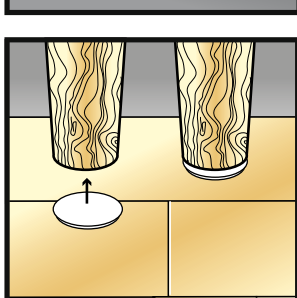
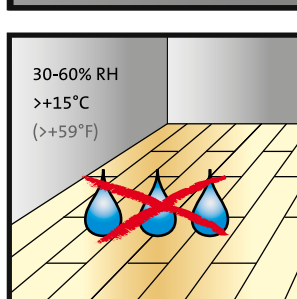
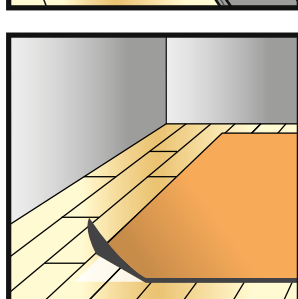
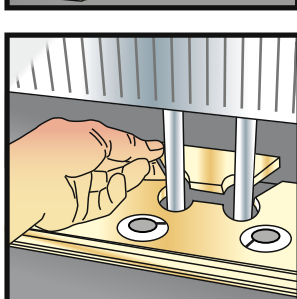
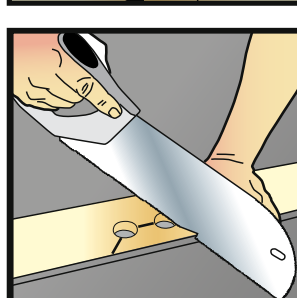
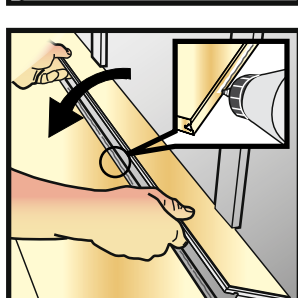
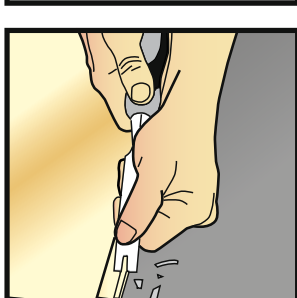
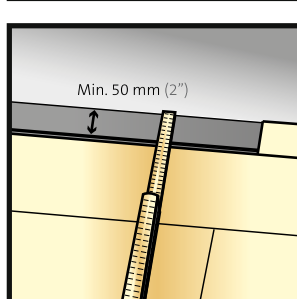
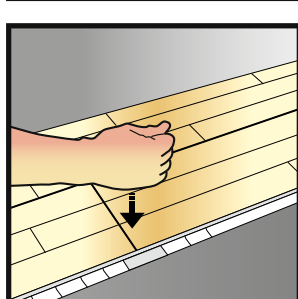
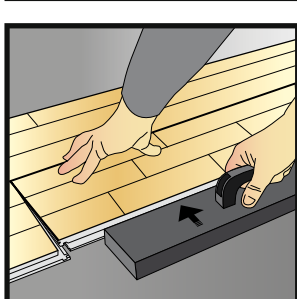
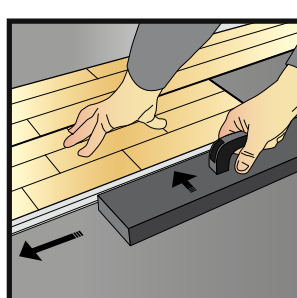
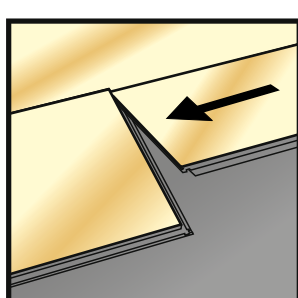
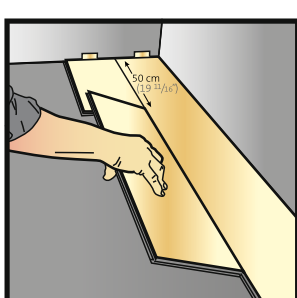
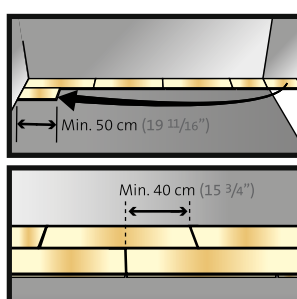
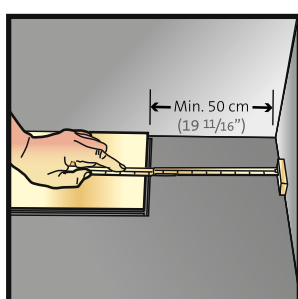
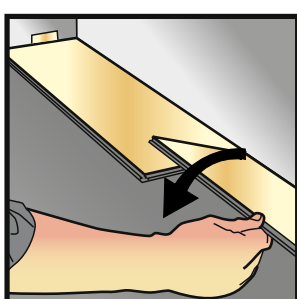
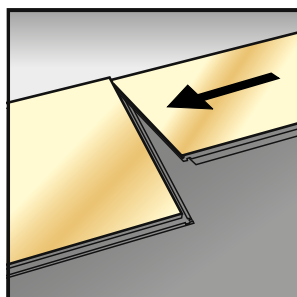
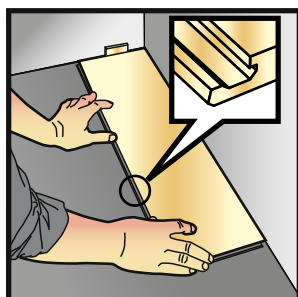
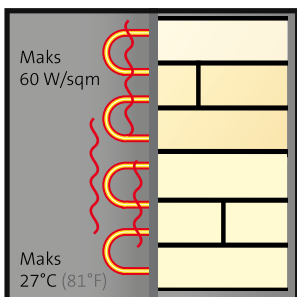
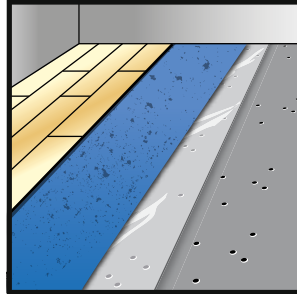
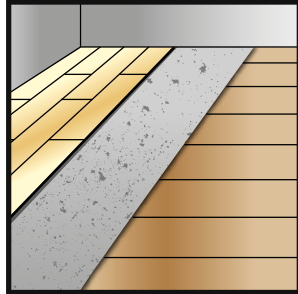
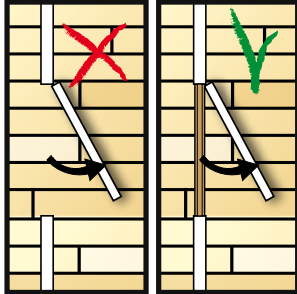
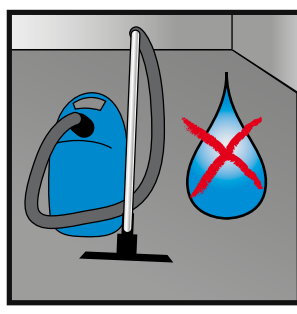
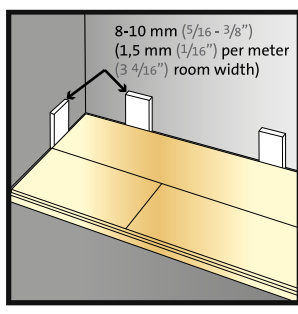
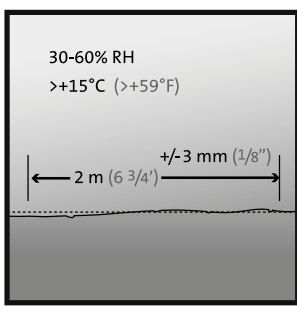
DK Parketten skal opbevares tørt - helst i 48 timer, og pakkerne skal ikke åbnes, før parketten skal lægges. Fagfolk har sorteret og klassificeret parketten. Hvis der er tvivl om sorteringen, skal der reklameres pga. sortering eller eventuelle synlige fejl, før parketten lægges.

SE Parketten ska läggas torrt i 48 timmar och paketen ska inte öppnas förrän det ska läggas. Kunniga personal har sorterat och klassificerat parketten. Där det skulle vara tvivel om sorteringen ska reklamationer på det eller eventuella andra synliga fel, påvisas innan parketten är lagd.

NO Parketten skal lagres tørt, helst i 48 timer og pakkene skal ikke åpnes før parketten skal legges. Fagfolk har sortert og klassifisert parketten. Dersom det er tvil om sorteringen, skal reklamasjoner pga. sortering eller eventuelle synlige feil fremmes før parketten legges.

Monteringsanvisning OPUS parkettgolv

Installation instructions OPUS parquet flooring



Remove/Demontage

