



## **SIA "ISG" instructions for the installation of metal doors**

### **General requirements.**

Doors can be installed only by a qualified expert craftsman.

If installing the doors in the aisle of the external wall of a house, all reasonable measures shall be taken to protect the paint coating and decorative panels of the metal doors from direct negative impact of the weather (snow, rain, sun and other).

### **Tools and fixing.**

10\*140 mm anchor bolts of 10 mm diameter shall be used to fix the door jamb (frame). Depending on the type of the wall it is recommended to use a drill of 10 mm diameter. The size of the plastic corks to be fit into the fixing holes of the jamb (frame) is 25 mm.

Screws and dowels required to fix the jamb (frame) are included in the door assemblage (in case of standard doors).

### **Installation work procedure.**

#### **1. Before installation of the doors check the following:**

Door model, dimensions of the metal structure, direction of opening (right or left) and the door cases on the frame – whether it conforms to the order.

Colour, quality of the paint coating, layout and colour of the decorative panels, material and colour of the finishing panels and whether the cut-out pattern conforms to the order.

Assemblage of the door lock system, colour of the fittings and whether the door handle conforms to the order.

Whether there are any mechanical damages of the door surface, glazing or fittings. If visible mechanical damage, scratches or dents are detected – all this shall be recorded in the handing over – acceptance act.

**2. The door case, door leaf and tools shall be delivered to the place of installation. It is very important to avoid damaging the painted surface during the installation of the doors.**

(if required)

- Perform dismantling of the electrical door bell.
- Perform dismantling of the old door block and clean the door aisle from plaster remnants. Remove all construction debris afterwards.

**3. Check the conformity of the existing aisle. The permissible dimensions of the aisle, where the doors shall be installed into, are: + 10 + 30 mm. If the gaps exceed these values, the aisle shall be made to fit the required dimensions.**

**4. Install the doors into the aisle. Fix the frame into the aisle using wedges, by putting these in between the aisle and the frame so as to leave the technological gap (10-30mm). The hinge side of the door frame shall be installed vertically, checking with the carpenter's level in 2 planes.**



5. Level out the hinge side of the door jamb and drill hole through the jamb to fit in the top dowel, using a 10 mm diameter drill, up to 150 mm deep. Fit in the dowel through the jamb hole, fixing the dowel with the screw tip. Then drive in the screw using a chuck wrench so deep as to leave around 10 mm between the installation aisle and the jamb. Repeat this procedure with the bottom hole of the hinge side and the fixing holes of the opposite side, beginning with the one on top. Check the verticality and the weight of the side surface of the jamb.

6. Close the fixing holes with the plastic corks.

7. Lubricate the door hinges.

8. Hang the door leaf into the hinges on the sides of the frame.

9. Check if the clearance ( $4 \pm 2$  mm) between the door leaf and the frame is equal along the whole perimeter of the doors.

Check the clearance of the door leaf and the jamb (frame), and whether the external surface of the doors and the surface of the jamb (frame) are parallel. If required, adjust by using the screws and correct the thickness of the supporting blocks.

10. Fix the side of the door frame, where the strike plate is integrated, into the aisle.

11. Fix the handles and check the closing function of the door latch (and other lock latches) when opening and closing the doors. Check unlocking of the lock by keys.

Check the function of opening of the doors and functioning of the locks without the use of force.

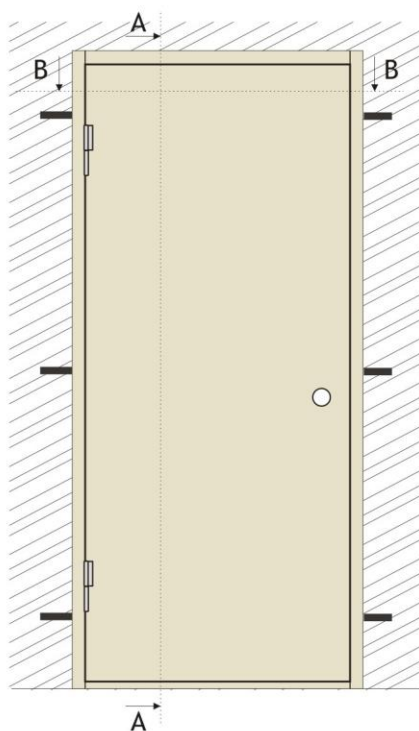
If there are small deviations in the striker and strike plate of the door frame – cut the strike plate to the size or, if it is adjustable, then adjust it.

12. Installation of the door closer – installation shall be performed according to the instructions of the manufacturer.

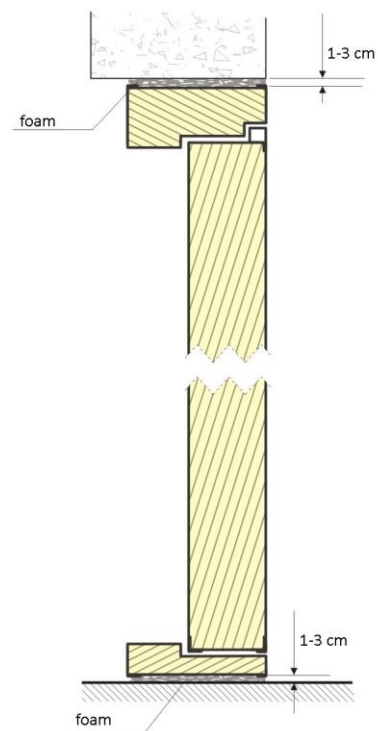
13. Protect the frame using the painting tape. Fill the gaps between the installation aisle in the wall and the jamb.

Certified fireproof foam shall be used as filler for fireproof doors. Regular construction foam can be used as filler for the doors, which are not intended to be fireproof.

14. Collect the tools and remove all debris. Hand over the completed work.



section A-A



sections B-B

