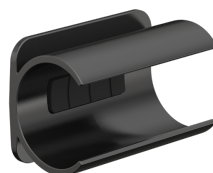




— PRODUCT DATA SHEET

Lamp Adapter Type C



Lamp Adapter Type C

PRODUCT DESCRIPTION

This handy adapter enables the docking of Ledlenser flashlights to the versatile Ledlenser Connecting System. The adapter is clipped onto the body of the lamp. Thanks to the integrated carriage, the lamp is now compatible with various additional accessories, e.g. the Belt Clip, various helmet holders or the Flexible Mount.

USABLE WITH

P6R Core, P6R Signature, P6R Work

TECHNICAL DATA

Length [mm]	45
Width [mm]	30
Height [mm]	26.6
Weight without batteries [g]	9.8
Material	PC

PACKAGING INFORMATION

Type of packaging	Box
Scope of delivery	Adaptor
Item No.	502250
Customs tariff number	3926909790

SINGLE PACKAGE

Dimensions W x H x D [cm]	7.2 x 5 x 5.5
Gross weight [g]	43.3
GTIN-13	4058205022590

INNER CARTON

Unit	12
Dimensions W x D x H [cm]	18 x 11.5 x 16
Gross weight [g]	595.1
GTIN-13	4058205022583

EXPORT CARTON

Unit	48
Dimensions W x D x H [cm]	39.5 x 26.5 x 20.5
Gross weight [kg]	2.76
GTIN-13	4058205022576

FOOTNOTES

The information pertaining to scope of delivery, appearance, performance, dimensions and weight corresponds to the information available at the time of publication. In the interest of product development, we reserve the right to change scope of delivery, appearance, design and color without prior notice. Product images may vary from the actual products and may show optional accessories which can be purchased separately. Errors and omissions excepted.