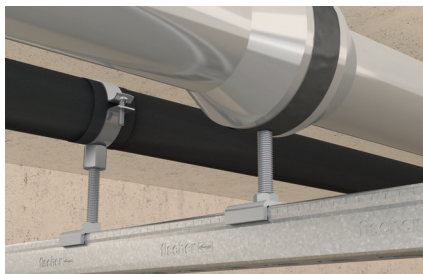


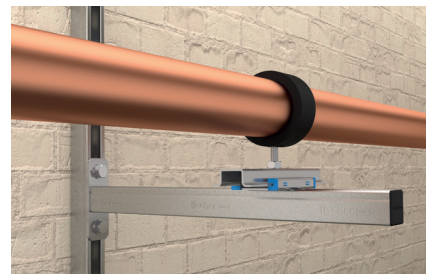
Refrigeration pipe clamp KFT

The two-screw refrigeration pipe clamp made from closed PUR foam

2a



Refrigerant pipe clamps



Refrigerant pipe clamp on sliding element

Applications

- Installation of pipes in refrigeration and air-conditioning applications with high loads

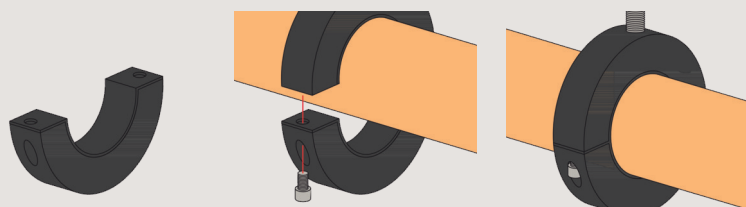
Advantages/benefits

- The refrigeration pipe clamp KFT made from closed PUR foam can be used with all standard insulation materials.
- The glued rubber overlay makes the installation easier.
- The triple-threaded connection nut M8 / M10 / 1/2" allows for flexibility during the installation.
- Age-resistant material ensures the long-term functionality of the KFT.
- The two screws allow an easy adjustment to suit the outer pipe diameter.

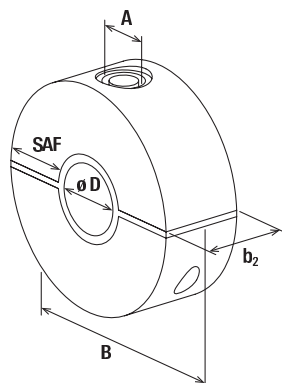
Properties

- Material: closed-cell polyurethane foam, silicone-free
- Diffusion resistance: 1000 μ
- Density: 250 kg/m³
- Compression strength: 3,96 mPa at 23 °C
- Heat conductivity (at 0 °C): 0,049 W/(m*K)
- Temperature range: -160 °C to +130 °C
- Fire behaviour: DIN 4102: Class B2

Installation KFT



Technical data

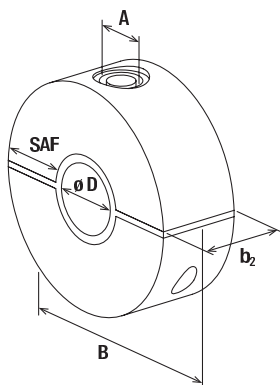


KFT

Item	Item No.	Thread	Internal diameter	Width	Locking screw	Insulation thickness	Length of insulation material	Max. recom. static load (centr. tension)	Sales unit
		A	D [mm]	B [mm]		S _{AF} [mm]	b ₂ [mm]	N _{recom.} [kN]	
KFT 9,5	505576	¹⁾ M 8 / M 10 / 1/2"	9,5	88	M 6	30	40	0.15	1
KFT 12,7	505577	M 8 / M 10 / 1/2"	12,7	88	M 6	30	40	0.20	1
KFT 15,8	505578	M 8 / M 10 / 1/2"	15,8	88	M 6	30	40	0.21	1
KFT 17,2	505579	¹⁾ M 8 / M 10 / 1/2"	17,2	88	M 6	30	40	0.21	1
KFT 18,0	505580	M 8 / M 10 / 1/2"	18,0	88	M 6	30	40	0.21	1
KFT 19,5	505581	¹⁾ M 8 / M 10 / 1/2"	19,5	88	M 6	30	40	0.21	1
KFT 21,3	505582	M 8 / M 10 / 1/2"	21,3	88	M 6	30	40	0.26	1
KFT 22,0	505583	M 8 / M 10 / 1/2"	22,0	88	M 6	30	40	0.26	1
KFT 26,9	505584	M 8 / M 10 / 1/2"	26,9	88	M 6	30	40	0.32	1
KFT 28,0	505585	M 8 / M 10 / 1/2"	28,0	88	M 6	30	40	0.32	1
KFT 33,7	505587	M 8 / M 10 / 1/2"	33,7	96	M 6	30	40	0.40	1
KFT 35,0	505588	M 8 / M 10 / 1/2"	35,0	96	M 6	30	40	0.42	1
KFT 40,0	505589	¹⁾ M 8 / M 10 / 1/2"	40,0	100	M 6	30	40	0.42	1
KFT 41,2	505591	¹⁾ M 8 / M 10 / 1/2"	41,2	100	M 6	30	40	0.51	1
KFT 42,4	505592	M 8 / M 10 / 1/2"	42,4	103	M 6	30	40	0.51	1
KFT 44,5	505593	¹⁾ M 8 / M 10 / 1/2"	44,5	103	M 6	30	40	0.51	1
KFT 48,3	505594	M 8 / M 10 / 1/2"	48,3	102	M 6	30	40	0.58	1
KFT 50,0	505595	¹⁾ M 8 / M 10 / 1/2"	50,0	112	M 6	30	40	0.60	1
KFT 54,0	505596	M 8 / M 10 / 1/2"	54,0	116	M 6	30	40	0.62	1
KFT 57,0	505597	M 8 / M 10 / 1/2"	57,0	116	M 6	30	40	0.65	1
KFT 60,3	505598	M 8 / M 10 / 1/2"	60,3	123	M 6	30	50	0.72	1
KFT 64,0	505599	M 8 / M 10 / 1/2"	64,0	123	M 6	30	50	0.77	1
KFT 70,0	505901	M 8 / M 10 / 1/2"	70,0	132	M 8	30	50	1.26	1
KFT 74,0	505902	¹⁾ M 8 / M 10 / 1/2"	74,0	132	M 8	30	50	1.26	1
KFT 76,1	505903	M 8 / M 10 / 1/2"	76,1	132	M 8	30	50	1.37	1
KFT 80,0	505904	¹⁾ M 8 / M 10 / 1/2"	80,0	132	M 8	30	50	1.37	1
KFT 84,0	505905	¹⁾ M 8 / M 10 / 1/2"	84,0	150	M 8	30	50	1.60	1
KFT 88,9	505906	M 8 / M 10 / 1/2"	88,0	150	M 8	30	50	1.60	1
KFT 92,1	505907	¹⁾ M 8 / M 10 / 1/2"	92,1	150	M 8	30	50	1.60	1
KFT 101,0	505908	¹⁾ M 8 / M 10 / 1/2"	101,0	188	M 8	40	60	2.59	1
KFT 104,0	505909	¹⁾ M 8 / M 10 / 1/2"	104,0	188	M 8	40	60	2.59	1
KFT 108,0	505910	M 8 / M 10 / 1/2"	108,0	188	M 8	40	60	2.59	1
KFT 114,3	505911	M 8 / M 10 / 1/2"	114,3	195	M 8	40	60	2.74	1
KFT 129,0	505914	¹⁾ M 8 / M 10 / 1/2"	129,0	220	M 8	40	60	3.19	1
KFT 133,0	505915	M 8 / M 10 / 1/2"	133,0	220	M 8	40	60	3.19	1
KFT 139,7	505916	M 8 / M 10 / 1/2"	139,7	220	M 8	40	60	3.35	1
KFT 154,0	505917	¹⁾ M 12 / 1/2"	154,0	239	M 10	40	60	3.83	1
KFT 159,0	505918	M 12 / 1/2"	159,0	239	M 10	40	60	3.83	1
KFT 168,3	505919	M 12 / 1/2"	168,3	250	M 10	40	60	4.04	1
KFT 193,7	505920	¹⁾ M 16 / 1/2"	193,7	340	M 10	60	100	5.26	1

1) delivery on request

Technical data



KFT

Item	Item No.	Thread	Internal diameter	Width	Locking screw	Insulation thickness	Length of insulation material	Max. recom. static load (centr. tension)	Sales unit [pcs]
		A	D [mm]	B [mm]		S _{AF} [mm]	b ₂ [mm]	N _{recom.} [kN]	
KFT 204,0	505921 ¹⁾	M 16 / 1/2"	204,0	340	M 10	60	100	5.20	1
KFT 219,1	505922	M 16 / 1/2"	219,1	340	M 10	60	100	5.26	1
KFT 273	552859	M20 / 3/4"	273	393	M 16	60	100	7.00	1
KFT 323,9	552860	M20 / 3/4"	323,9	444	M 16	60	100	7.00	1

1) delivery on request