

SYREFASTE PRESSEDE LØSFLENSER / STAINLESS STEEL, PRESSED LOOSE FLANGES

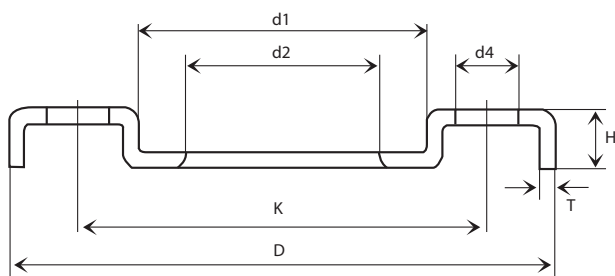
Drilled PN 10

MATERIALE:

EN 1.4404 (316L) For pressede sveisekrager.
Andre kvaliteter på forespørsel.

MATERIAL:

EN 1.4404(316L) To be used with pressed collars.
Other grades on request.



6

HS CODE INT. 7307.91

DN	Vare nr. Part no.	Krage Collar	Flens/Flange						Skruer/Bolts			Vekt Weight Kg
			D(mm)	d1(mm)	d2(mm)	H(mm)	T(mm)	K(mm)	Ant/Qty	Gj./Thr.	d4(mm)	
15	1932521	21,0	95	38,0	24,0	12,0	3,0	65	4	M 12	13,5	0,19
15	1932522	21,3	95	38,0	24,5	12,0	3,0	65	4	M 12	13,5	0,19
20	1932523	26,0	105	48,0	30,0	14,0	3,0	75	4	M 12	13,5	0,26
20	1932524	26,9	105	48,0	30,5	14,0	3,0	75	4	M 12	13,5	0,26
25	1932525N5	31,0	115	53,0	34,0	14,0	3,0	85	4	M 12	13,5	0,32
25	1932526N5	33,7	115	53,0	37,5	14,0	3,0	85	4	M 12	13,5	0,32
32	1932527N5	38,0	140	68,0	40,0	15,0	3,0	100	4	M 16	17,5	0,46
32	1932528N5	42,4	140	68,0	47,0	15,0	3,0	100	4	M 16	17,5	0,46
40	1932529N5	46,0	150	77,0	48,0	16,0	3,0	110	4	M 16	18,0	0,66
40	1932531N5	48,3	150	77,0	55,0	16,0	3,0	110	4	M 16	18,0	0,66
50	1932532N5	56,0	165	91,0	58,0	18,0	3,0	125	4	M 16	18,0	0,81
50	1932533N5	60,3	165	91,0	66,0	18,0	4,0	125	4	M 16	18,0	0,81
65	1932534	71,0	185	108,0	73,0	20,0	4,0	145	4	M 16	18,0	1,01
65	1932535	76,1	185	108,0	82,0	20,0	4,0	145	4	M 16	18,0	1,02
80	1932536	86,0	200	123,0	90,0	20,0	4,0	160	8	M 16	18,0	1,36
80	1932537	88,9	200	123,0	95,0	20,0	4,0	160	8	M 16	18,0	1,36
100	1932538	106,0	220	141,0	110,0	20,0	4,0	180	8	M 16	18,0	1,78
100	1932539	114,3	220	141,0	120,0	20,0	4,0	180	8	M 16	18,0	1,78
125	1932541N5	131,0	250	168,0	135,0	21,0	5,0	210	8	M 16	18,0	2,20
125	1932542	139,7	250	168,0	146,0	21,0	5,0	210	8	M 16	18,0	2,20
150	1932543	156,0	285	192,0	160,0	22,0	5,0	240	8	M 20	22,0	3,12
150	1932544	168,3	285	192,0	174,5	22,0	5,0	240	8	M 20	22,0	3,12
200	1932545N5	206,0	340	245,0	212,0	26,0	6,0	295	8	M 20	22,0	4,61
200	1932546	219,1	340	245,0	226,5	26,0	6,0	295	8	M 20	22,0	4,61
250	1932547N5	256,0	395	295,0	262,0	28,0	6,0	350	12	M 20	22,0	6,21
250	1932548	273,0	395	295,0	280,5	28,0	6,0	355	12	M 20	22,0	6,21
300	1932549	306,0	445	345,0	312,0	31,0	6,0	400	12	M 20	22,0	7,73
300	1932551	323,9	445	345,0	330,5	31,0	6,0	410	12	M 20	22,0	7,73
350	1932553	356,0	505	393,0	362,0	34,0	8,0	460	16	M20	22,0	10,3
400	1932555	406,0	565	443,0	413,0	36,0	8,0	515	16	M24	26,0	13,3
450	1932557	456,0	615	495,0	465,0	40,0	8,0	565	20	M24	26,0	14,1
500	1932559	506,0	670	560,0	517,0	40,0	8,0	620	20	M24	26,0	14,9

Kan leveres med EN 10204- 3.1 sertifikat / Can be delivered with EN 10204- 3.1 certificate.