



FDV dokumentasjon

Spjeldventiler / Butterflyvalves



Innledning

SIP ventilen er utviklet gjennom mange år til bruk i det norske og internasjonale markedet. Ventilen har blitt en kvalitetsventil gjennom kontinuerlig utvikling og modifiseringer basert på tilbakemeldinger fra markedet. I tillegg leveres SIP ventilene med all nødvendig dokumentasjon i forhold til de systemer de benyttes i. Alle våre spjeldventiler er produsert på DNV godkjent verk, samt at de har DNV typegodkjennelse.

Produksjonen av våre spjeldventiler overvåkes og kontrolleres av Ahlsell sine egne ingeniører (Ahlsell avd. Kina), som sikrer at tester, materialer, utførelse og dokumentasjon er iht. våre spesifikasjoner. Ahlsell sine kontrollrutiner på spjeldventiler anses for å være en av de mest omfattende i hele Skandinavia. I tillegg omfatter våre kontrollrutiner "Code of conduct" herunder relevante punkter i ILO konvensjonen. For våre kunder vil dette bety at man ikke bare kjøper en meget god ventil, men tar også del i et system som tar hensyn til miljø og sosialt ansvar.

Ahlsell har gjennom sin 132 års lange historie, etablert seg som et trygt og seriøst selskap i Skandinavia, og har meget kompetente medarbeidere med lang erfaring fra markedene som de lokalt arbeider i. Ahlsell er et nordisk selskap med ca 4500 medarbeidere.

Våre SIP ventiler

Our SIP valves

*

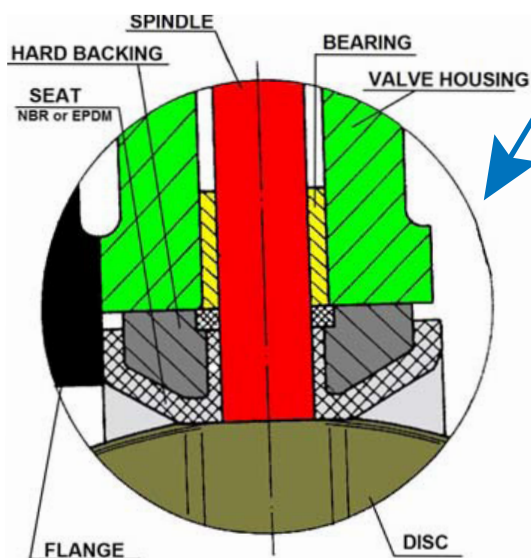
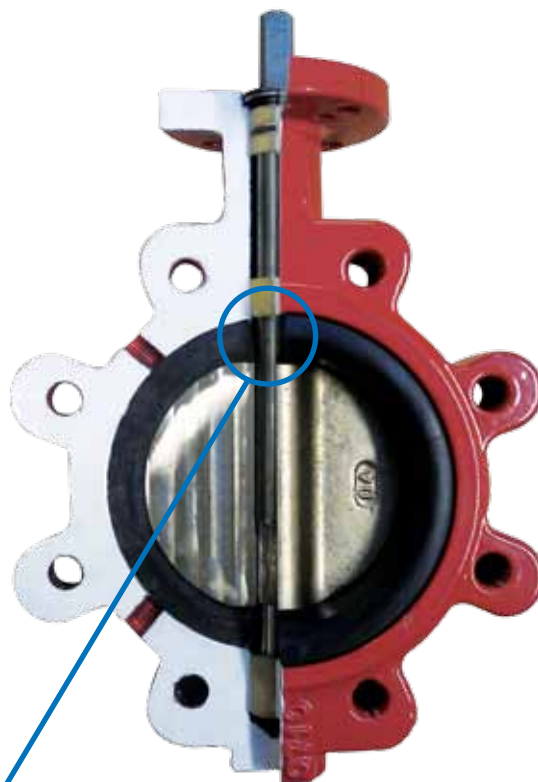
Basic design

Designet har fordeler som:

- Ikke mulig å blåse opp pakningen, ved lekkasje bak pakningen.
- Pakningen krever ikke spesiell montering av ventilen i rørsystemet.
- Gjennomgående spindel fordeler kreftene bedre enn ved 2 delt spindel (unntak 15W/LT).
- Godt egnet til aktuator, med 3 lager og nøyaktig sete/spjeld tetning.

The design have benefits as:

- *Not possible to blow up the seat in case of internal leakage.*
- *The sealing design requires no special mounting procedure for installation of valve in the pipe line.*
- *Solid spindle ensures improved resistance to bending compared to two piece shaft design (except 15W/LT).*
- *The valve design is well adapted to actuator operation due to its 3 shaft bearings and bidirectional drop tight sealing.*



Illustrasjon av den spesielle tetningen på våre SIP dreiespjeldventiler med gummi vulkanisert til en hard backing ring. Man ser også lageret som ligger mellom aksel og ventilhuset.

Illustration of the special sealing on a SIP butterfly-valve, rubber mounted to a hard backing ring. You will also see the bearing between the shaft and the housing.

SIP dreiesjeldventil er typegodkjent av DNV
The SIP butterfly valve is type approved by DNV

Spindelmateriale/design

Spindle material/design

*

SIP

Spindelmateriale:

Spindelen i våre SIP ventiler fra dimensjon DN40 til DN150 er i 316 (EN. 1.4408) materiale, og har design som vist på bildet.

Spindle material:

The stem in our SIP valves from dimension DN40 to DN150 are in 316 (EN. 1.4408) material, and is designed as shown in the picture.



Foto: DN150, 316



Foto: DN200, 17-4 PH



Foto: DN150, 316

Foto: DN200, 17-4 PH

Spindelmateriale:

Spindelen i våre SIP ventiler fra dimensjon DN200 og over er i 17-4 PH (ASTM A693 grad 630) materiale, og har design som vist på bildet. Vår 14 og 16 serie (W og LT) har 17-4 PH spindel i alle dimensjoner pga trykk.

Spindle material:

The stem in our SIP valves from dimension DN200 and up are in 17-4 PH (ASTM A693 grade 630) material, and is designed as shown in the picture. Our 14 and 16 series (W and LT) have 17-4 stem in all dimensions caused of the design pressure.

Generelle egenskaper 17-4 PH:

17-4HP Martensitisk herding er også kjent som Type 630, som er en krom-kobber legering i rustfritt stål som brukes for applikasjoner som krever høy styrke og en moderat grad av korrosjonsbestandighet. Høy styrke er opprettholdt til ca 315 grader Celsius.

General properties 17-4 PH:

17-4 Martensitic Precipitation Hardening also known as Type 630, is a chromium-copper precipitation hardening stainless steel used for applications requiring high strength and a moderate level of corrosion resistance. High strength is maintained to approximately 315 degrees Celsius).

Setepakning

Sealing

*

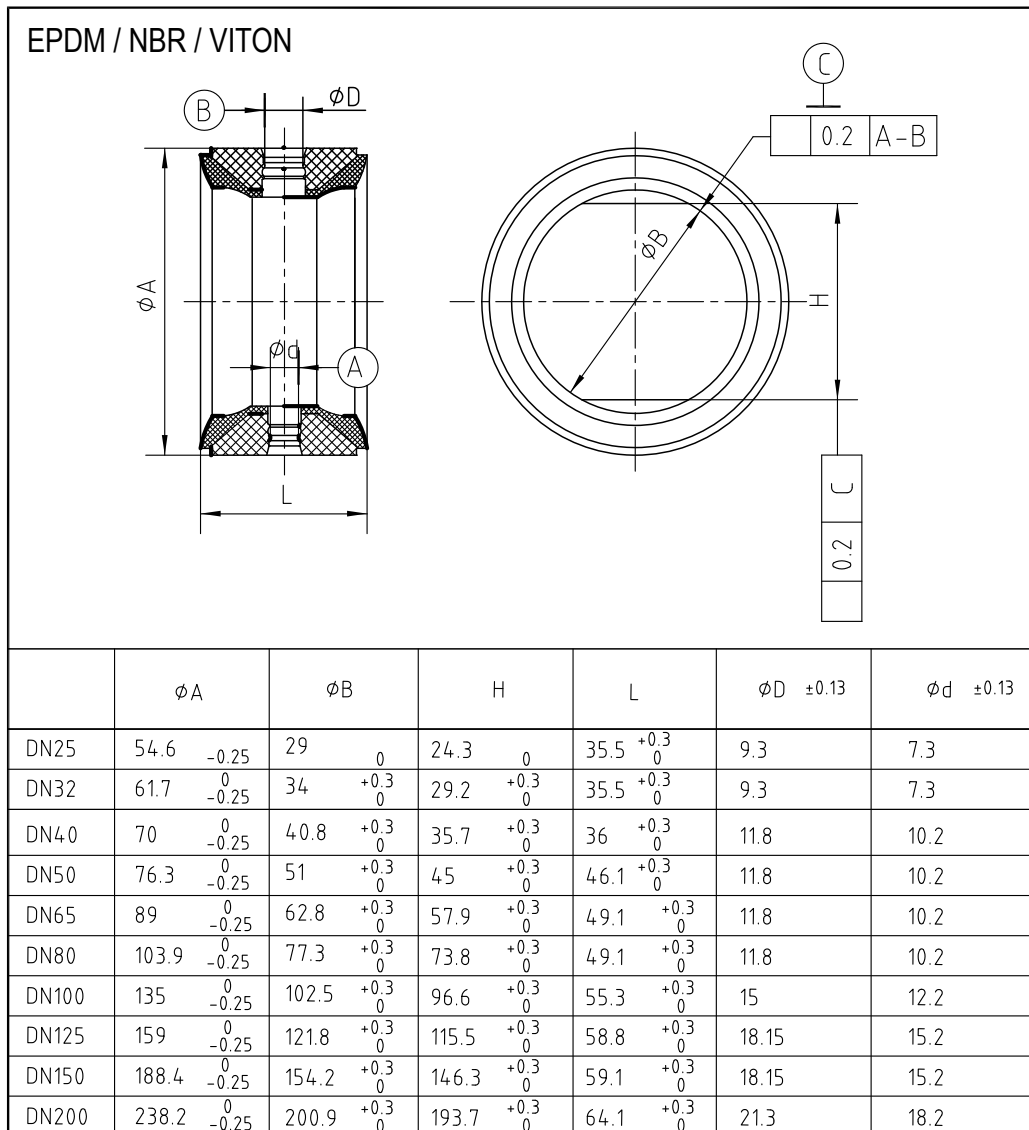
SIP

Pakning:

Våre setepakninger er også merket på både for- og bakside av pakningen om gummikvalitet, for optimal kontroll på at ventilen har korrekt pakning i forhold til oppgitte spesifikasjoner.

Sealing:

Our valve seats are marked on both the front and back of the gasket, stating rubber quality, in order to have optimal control that the valves has the correct sealing in according to the stated specifications.



Armaturl/ Valves

Generell informasjon/ General information

Damp:

Noen av våre ventiler står oppført med mettet damp som medium i bruksområdet. I dampapplikasjoner skal det fortrinnsvis anvendes ventiler som er konstruert for dette formålet, for å opprettholde forventet levetid. Kvaliteten som normalt benyttes til damp, er stål (GS-C 25N/ WCB).

Dersom det eksempelvis benyttes damp i kvaliteter som messing eller bronse, må det påregnes en redusert levetid.

Sertifikater:

Alle våre ventiler kan leveres med sertifikater. Materialkvaliteter under GGG-40 (Seigjern) leveres ikke med høyere gradering enn EN10204-2.2. sertifikater. Kvaliteter fra GGG40 og over, kan leveres med EN10204-3.1.

Dersom en ventil skal leveres med EN10204-3.2 eller et oppgradert sertifikat (material/ test sertifikat fra classeselskap), må man oppgi classeselskap, system, medium, trykk, temperatur og andre opplysninger som er relevant for at riktige sertifikater utstedes.

EN10204-3.2 (3.1.C) sertifikat og klasse test/material sertifikat:

EN10204-3.2 sertifikater kan kun utstedes av classeselskap basert på testresultater de har gjort på støperi eller verk. For praktisk å gjennomføre en oppgradering som tar mindre tid, har de fleste classeselskap etablert en rutine for å utstede material/ testsertifikat.

Material/ testsertifikater fra classeselskap og EN10204-3.2 er ikke likestilt med hverandre, men er akseptert i de aller fleste installasjoner der EN10204-3.2 er påkrevet.

Steam:

Some of our valves have been indicated with saturated steam as an application. For steam applications, valves should preferably be made of steel (GS-C25N/ WCB).

If materials like brass or bronze are used in steam applications, the service time might be reduced.

Certificates:

All our valves can be delivered with certificates. Material qualities below GGG-40 (ductile iron) are not delivered with higher gradation than EN10204-2.2. GGG-40 and higher grades can be delivered with EN 10204-3.1.

If EN10204-3.2 or upgraded material/ test certificates are requested (class society), please state class society, system, medium, pressure, temperature and other relevant information in order to issue correct certificates.

EN10204-3.2 (3.1.C) and class society test/material certificate:

EN10204-3.2 certificates can only be issued by a class society based upon test results they have done at the foundry or mill. The majority of the class societies have established procedures in order to issue material/ test certificates to compensate for time, and practical accomplishment of ongoing projects.

Material/ test certificates from class societies and EN10204-3.2 are not formally equivalent, but are accepted in most installations where EN10204-3.2 is requested.

Trykkprøvings rutiner v/sertifisering av ventiler

Test pressure routines by certification of Shiplside and Ship bottom valves

Trykktesting av dreiespjeldventiler:

Trykkklasse PN10/16/20/25

Ved testing av ventiler PN10/16/20/25, blir disse testet ved 1,1 x arbeidstrykk mot stengt ventil og 1,5 mot åpen ventil. (Klassekrav)

Sertifisering iht. klassekrav

Etter utført test blir ventilen merket med et unikt nummer fra klasseselskap. Dette blir innslått på ventil hals og forsegles med rød lakk.

Trykkklasse dreiespjeldsventiler:

Alle trykklasser er oppgitt for medier ved driftstemperatur 20°C.

Pressure testing of butterfly valves:

Pressure class PN10/16/20/25

Pressure testing of valves PN10/16/20/25: These valves will be tested with 1,1 x pressure rating against closed valve and 1,5 against open valve (Class society rules).

Certification acc. to class society rules

After the tests are done and the valves are approved, the valve body will be stamped with a unique tag number given by class society. The tag number will be sealed with red enamel paint.

Pressure class butterfly valves:

All pressure classes valid for mediums at ambient temperature at 20°C.



Tabell for setematerialer

Table for seat materials

Name	Composition	General Application	Temp. limit	Other limits	Availability	
EPDM	Ethylene - Propylene Terpolymer	Hot and cold water- Steam - Sea water - Brine - Esters - Ketone Alkalis - Caustic Soda	-45°C +120°C	-49°F +248°F	Not recommended for hydrocarbons - oils - fats	Normal stock
BUNA N (NBR)	Copolymer of Butadiene	Hydrocarbons Natural gas Oils and fat - Air - Hot and cold water - Seawater - Gasoline	-20°C +80°C	-4°F +176°F	Not recommended for Solvents - Benzene - Xylol	Normal stock
Viton (FPM)	Fluor carbon polymer	Mineral acids Oils Hydrocarbons	-20°C +135°C	-4°F +275°F	Not recommended for steam - Freon 22 Solvents - Ketones Esters - Alkalis	Normal stock
Teflon (PTFE)	Polytetrafluoro Ethylene	Solvents Corrosive Products	-40°C +180°C	-40°F +356°F	Not recommended for fluid containing powders. Alkaline metals(sodium, potassium) Gaseous Fluorine	Normal for ball valve & HP butterfly valve

Tabellen er kun en generell oversikt.

Kundene må derfor selv bestemme hvilke setepakninger som passer til deres spesielle behov.

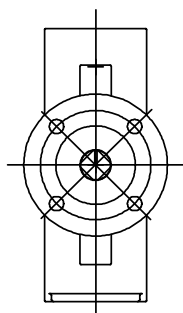
Ahlsell kan ikke holdes ansvarlig for valg av elastomer setepakninger.

The table is merely indicative.

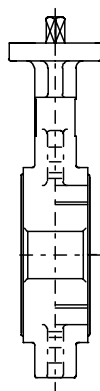
The customer is expected to make the final decision regarding the suitability of seat materials for their specific applications. Therefore Ahlsell cannot in any way be held responsible for the elastomers used.

Installasjon av dreiespjeldventiler

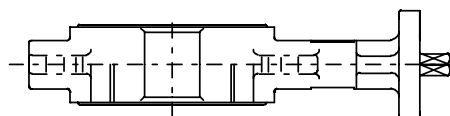
Installation of butterfly valves



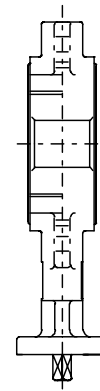
Anbefalt posisjon
Recommended



Mulig posisjon
Possible position



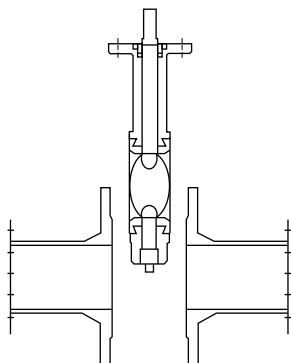
Mulig posisjon
Possible position



Feil posisjon
Not recommended

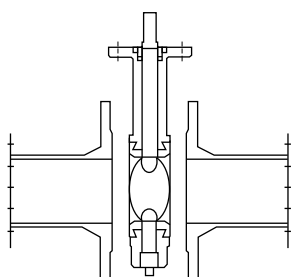
Installasjon av dreiespjeldventiler Installation of butterfly valves

Anbefalt installasjon
Recommended installation



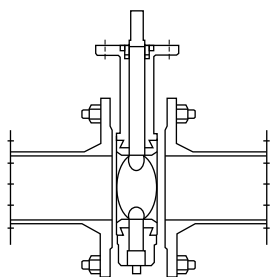
1. Ha en god avstand mellom flensene før ventilen settes inn. Spjeldet skal være i delvis åpen posisjon, men ikke mer enn ventilens byggelengde. Dette for å hindre skade på spjeld og foring, samt unngå høyt vridningsmoment innledningsvis.

Spread flanges enough to allow the valve with disc in partially open position, but not extending the face to face length of the valve.



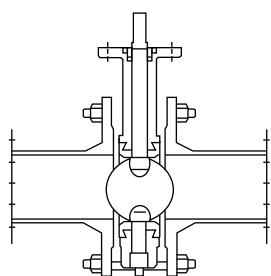
2. Pakninger mellom flenser og ventil skal ikke benyttes.

Gaskets between the flanges and valve are not needed and should not be used.



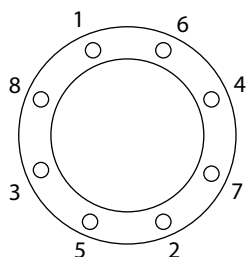
3. Sett i bolter gjennom flensene og skru forsiktig til (nederste bolter først).

Insert bolts through the pipe flange holes and tighten carefully (bottom bolts first).



4. Spjeldet åpnes helt før fast innspenning.

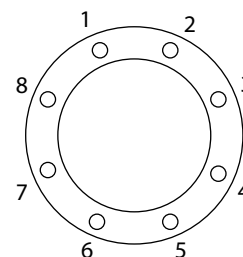
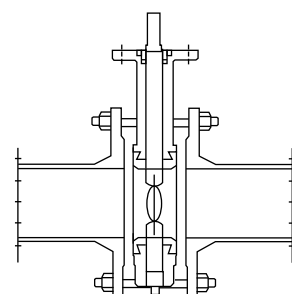
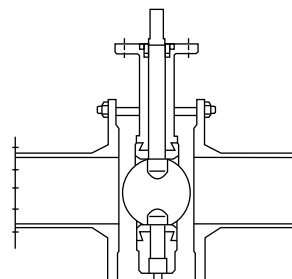
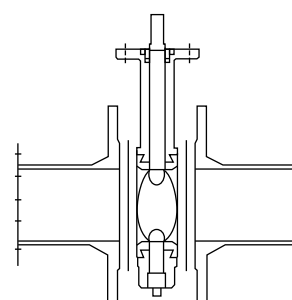
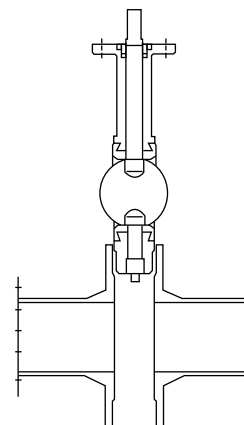
Disc in full open position before tightening the bolts evenly.



5. Spenn boltene fast i.h.t. figur til venstre.

Tighten the bolts evenly in accordance with the figure to the left.

Ikke anbefalt installasjon
Not recommended installation



Dreiespjeldventil Wafer Butterfly valve Wafer

*

SIP - 04W

Anbefalte bruksområder:

Ventil for bruk på varmeanlegg/
kjølevannssystemer maks. temp. 120°C.

Flenseboring:

DN 50 - 150 PN16/ ANSI CL.150
DN 200 - 300 PN10/ ANSI CL.150

Trykkklasse:

DN 50 - 150 PN16
DN 200 - 300 PN10

Standard ventiler fra DN50 til og med DN150 leveres med spak.
Dimensjoner fra DN200 leveres med gir.
For operasjonsmoment se side side 42.

Recommended usage:

Valve for use in HVAC systems.
Max temp. 120°C.

Flange drilling:

DN 50 - 150 PN16/ ANSI CL.150
DN 200 - 300 PN10/ ANSI CL.150

Pressure class:

DN 50 - 150 PN16
DN 200 - 300 PN10

Standard valves from DN50 to DN150 are delivered with lever.
Dimensions from DN200 are delivered with gear.
For operating torque see page 42.

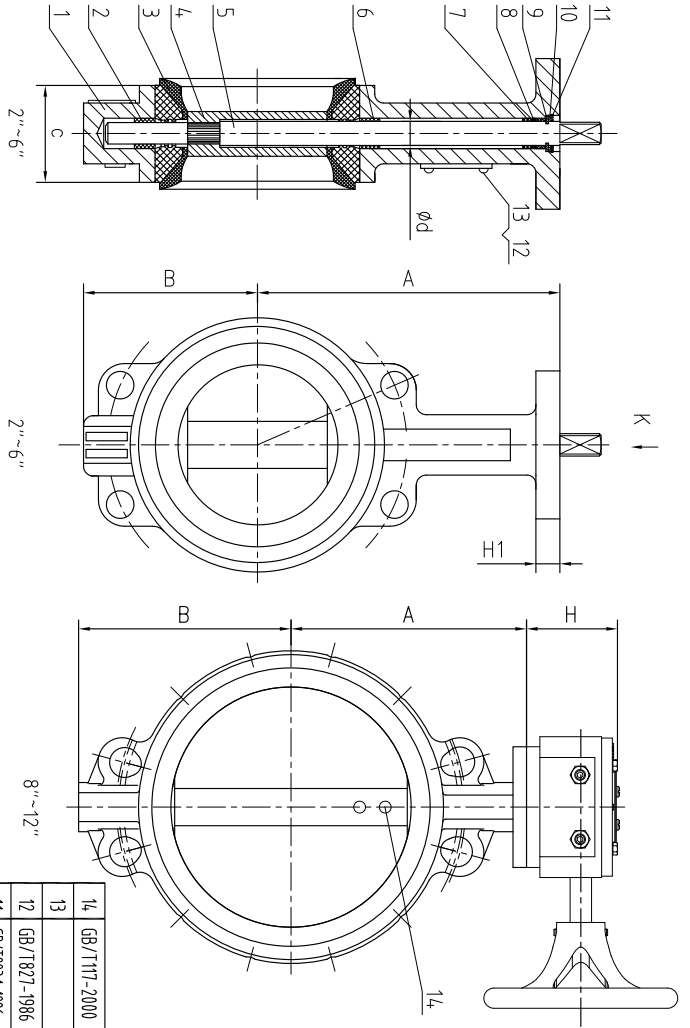


Detalj/Part name	Materiale/Material
Hus/Body	Seigjern/Ductile iron (DI) GGG-40.3
Spjeld/Disc	316SS, (1.4408)
Spindel/Stem	<DN150 316SS>DN200 17-4PH-SS
Pakning/Sealing	EPDM
Foringer/Bearings	PTFE
Farge/Colour	Rød/Red

DN	Vare nr. Standard	Vare nr. *Free top	M SQ mm	ISO-TOP 5211	h2 mm	Arb.trykk Work. pressure	Vekt Weight Kg
50	5534027	5534234	11	F05/07	30	16 bar	3,57
65	5534028	5534235	11	F05/07	30	16 bar	4,40
80	5534029	5534236	11	F05/07	30	16 bar	4,64
100	5534031	5534237	14	F05/07	30	16 bar	5,54
125	5534032	5534238	14	F07	30	16 bar	7,91
150	5534033	5534239	17	F07	30	16 bar	8,90
200	5534034	5534241	17	F07/10	35	10 bar	23,15
250	5534035	5534242	22	F10	38	10 bar	29,11
300	5534036	5534243	27	F12	38	10 bar	44,20

*Free top = Ventil for montering av aktuator/Valve for mounting of actuator. >M SQ -Montering/ M SQ-Mounting.

Kan leveres med EN 10204- 3.1 sertifikat/Can be delivered with EN 10204- 3.1 certificate.



DN	A	B	C	H	H1	H2	ØF	ØG	4-ØN	Ød	M
50	161	80	43	11	12	90	3070	710	12.6	11	
65	178	89	46	11	12	90	3070	710	12.6	11	
80	181	95	46	13	12	90	3070	710	12.6	11	
100	200	114	52	13	16	90	3070	710	13.77	14	
125	213	127	56	13	16	90	70	10	18.92	14	
150	226	140	56	13	19	90	70	10	18.92	17	
200	260	176	60	14	19	125	70/102	100/12	22.1	17	
250	292	220	68	14	24	125	102	12	28.45	21	
300	337	256	78	15	20	130	125	14	31.6	27	

Item	Standard
Design standard	EN 593:2004
Test standard	EN 12266-1:2003
Face to face standard	EN 558-1:1996

14	GB/T117-2000	PN	2	T7-4PH							
13		PLATE	1								
12	GB/T827-1986	RIVET 2.0X5	2	Al							
11	GB/T893-1986	RAT TAINING RING	1								
10		WASHER	1	SS304							
9	GB/T893.4-1986	RAT TAINING RING	1								
8		O RING	1	EPDM							
7		BUSHING II	2	F4							
6		BUSHING I	1	F4							
5		STEM	1	DN14-5836SS/DN100T7-4PH							
4		DISC 2"~12"	1	316SS							
3		SEAT RING	1	EPDM							
2		LOWER BUSHING	1	F4							
1		2"~12" BODY	1	GGG403							

Item ref	Quantity	Title/Name, designation, material, dimension etc	Article No./Reference
Designed by	jp	Checked by	Approved by - date
File name		Date	11/10/09
Scale			

Num	Code Num	Name	Qty	Material	NW	GW
14		PN	2	T7-4PH		
13		PLATE	1			
12		RIVET 2.0X5	2	Al		
11		RAT TAINING RING	1			
10		WASHER	1	SS304		
9		RAT TAINING RING	1			
8		O RING	1	EPDM		
7		BUSHING II	2	F4		
6		BUSHING I	1	F4		
5		STEM	1	DN14-5836SS/DN100T7-4PH		
4		DISC 2"~12"	1	316SS		
3		SEAT RING	1	EPDM		
2		LOWER BUSHING	1	F4		
1		2"~12" BODY	1	GGG403		

Standard valves from DN50 to DN150 are delivered with lever.
Dimensions from DN200 are with gear

Flange drilling:
DN50-150 PN16/ANSI CL.150
DN200-300 PN10/ANSI CL.150
Pressure class:
DN50-150 PN16
DN200-300 PN10

Assembly Drawing	2"~12" Butterflyvalve(eng)	Edition	Sheet
SIP-04W-1		C	

Dreiespjeldventil Lug Butterfly valve Lug

*

SIP - 04LT

Anbefalte bruksområder:

Ventil for bruk på varmeanlegg/
kjølevannssystemer maks. temp. 120°C.

Recommended usage:

Valve for use in HVAC systems.
Max temp. 120°C.

Flenseboring:

DN 50 - 150 PN16
DN 200 - 300 PN10

Trykkklasse:

DN 50 - 150 PN16
DN 200 - 300 PN10

Flange drilling:

DN 50 - 150 PN16
DN 200 - 300 PN10

Pressure class:

DN 50 - 150 PN16
DN 200 - 300 PN10

Standard ventiler fra DN50 til og med DN150 leveres med spak.
Dimensjoner fra DN200 leveres med gir.
For operasjonsmoment se side side 42.

Standard valves from DN50 to DN150 are delivered with lever.
Dimensions from DN200 are delivered with gear.
For operating torque see page 42.

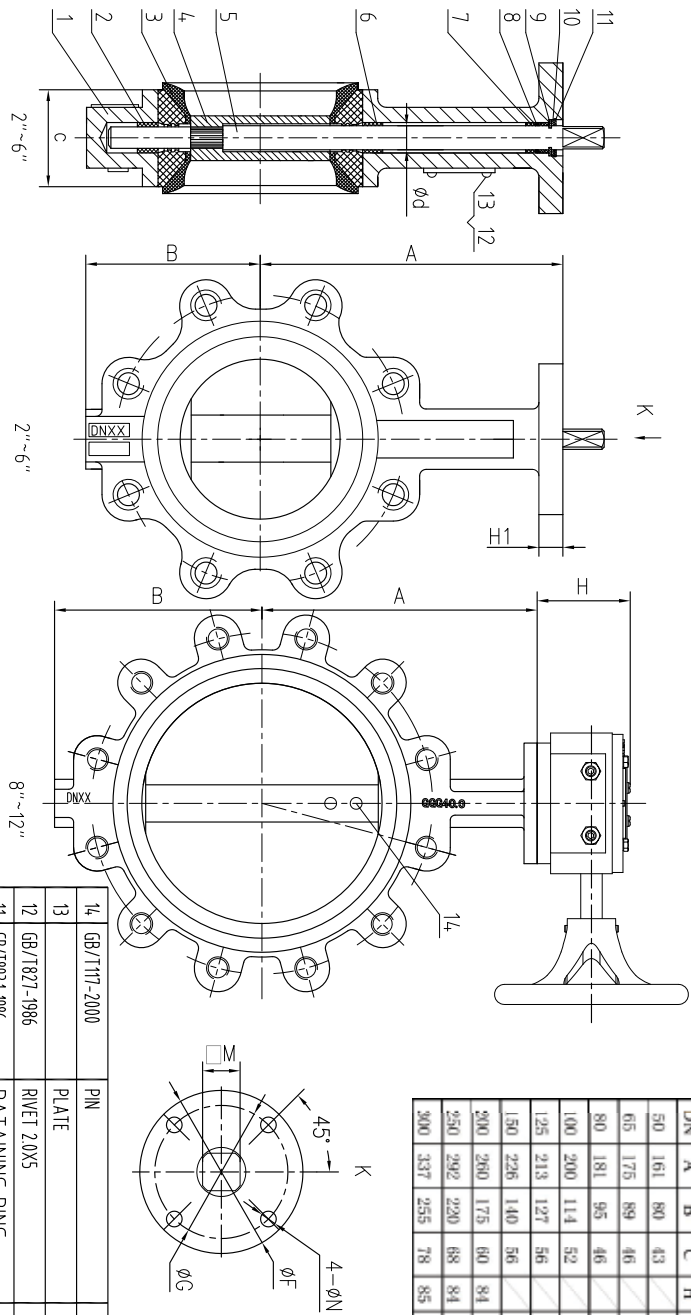


Detalj/Part name	Materiale/Material
Hus/Body	Seigjern/Ductile iron (DI) GGG-40.3
Spjeld/Disc	316SS, (1.4408)
Spindel/Stem	<DN150 316SS/>DN200 17-4PH-SS
Pakning/Sealing	EPDM
Foringer/Bearings	PTFE
Farge/Colour	Rød/Red

DN	Vare nr. Standard	Vare nr. *Free top	M SQ mm	ISO-TOP 5211	h2 mm	Arb.trykk Work. pressure	Vekt Weight Kg
50	5534037	5534244	11	F05/07	30	16 bar	4,30
65	5534038	5534245	11	F05/07	30	16 bar	4,33
80	5534039	5534246	11	F05/07	30	16 bar	6,05
100	5534041	5534247	14	F05/07	30	16 bar	7,35
125	5534042	5534248	14	F07	30	16 bar	10,56
150	5534043	5534249	17	F07	30	16 bar	11,40
200	5534044	5534251	17	F07/10	35	10 bar	27,20
250	5534045	5534252	22	F10	38	10 bar	36,60
300	5534046	5534253	27	F12	38	10 bar	69,70

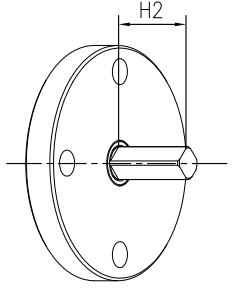
*Free top = Ventil for montering av aktuator/Valve for mounting of actuator. >M SQ -Montering/ M SQ-Mounting

Kan leveres med EN 10204- 3.1 sertifikat/Can be delivered with EN 10204- 3.1 certificate.



DN	A	B	C	H	H1	H2	ØF	ØG	4-ØN	Ød	M
50	161	80	43	11	12	90	50/70	7/10	12.6	12.6	11
65	175	89	46	11	12	90	50/70	7/10	12.6	12.6	11
80	181	95	46	13	12	90	50/70	7/10	12.6	12.6	11
100	200	114	52	13	16	90	50/70	7/10	13.77	13.77	14
125	213	127	56	13	16	90	70	10	18.92	18.92	14
150	226	140	56	13	19	90	70	10	18.92	17	17
200	280	175	60	14	19	125	70/102	10/12	22.1	22.1	17
250	292	220	68	14	24	125	102	12	28.45	28.45	22
300	337	255	78	14	29	150	125	14	31.6	31.6	27

Item	Standard
Design standard	EN 593:2004
Test standard	EN 12266-1:2003
Face to face standard	EN 558-1:1996



Standard valves from DN50 to DN150 are delivered with lever.
Dimensions from DN200 are with gear

Flange drilling:
DN50-150 PN16
DN200-300 PN10
Pressure class:
DN50-150 PN16
DN200-300 PN10

Num	Code Num	Name	Qty	Material	NW	GW
14	GB/1117-2000	PN	2	T1-4PH		
13		PLATE	1			
12	GB/1821-1986	RIVET 2.0x5	2	Al		
11	GB/18931-1986	RATAINING RING	1			
10		WASHER	1	SS304		
9	GB/18934.1-1986	RATAINING RING	1			
8		O RING	1	EPDM		
7		BUSHING II	2	F4		
6		BUSHING I	1	F4		
5		STEM	1	DN4-50x365xDN041-4PH		
4		DISC 2"-12"	1	316SS		
3		SEAT RING	1	EPDM		
2		LOWER BUSHING	1	F4		
1		2"-12" BODY	1	GG6403		

Itemref	Quantity	Title/Name, designation, material, dimension etc	Article No./Reference
Designed by	jp	Checked by	Approved by - date
File name	Date	11/10/08	Scale

Assembly Drawing 2"-12" Butterflyvalve(DN6)	Edition	Sheet
SIP-04LT-1	C	

Dreiespjeldventil Wafer Butterfly valve Wafer

*

SIP - 11W

Anbefalte bruksområder:

Ventil for bruk på RSW anlegg/
kjølevannssystemer maks. temp. 120°C.

Flenseboring:

DN 50 - 150 PN16/ ANSI CL.150
DN 200 - 600 PN10/ ANSI CL.150

Trykkklasse:

DN 50 - 150 PN16
DN 200 - 600 PN10

Recommended usage:

Valve for use in RSW applications and HVAC
systems. Max temp. 120°C.

Flange drilling:

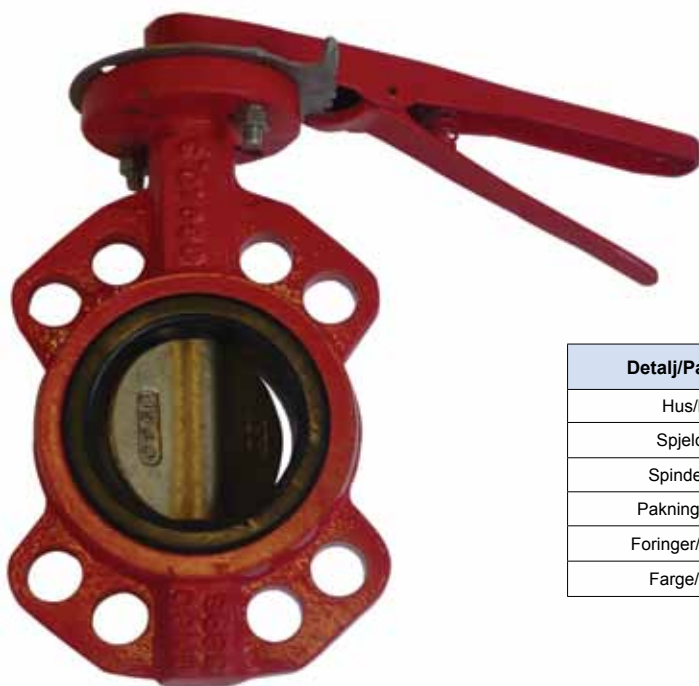
DN 50 - 150 PN16/ ANSI CL.150
DN 200 - 600 PN10/ ANSI CL.150

Pressure class:

DN 50 - 150 PN16
DN 200 - 600 PN10

Standard ventiler fra DN50 til og med DN150 leveres med spak.
Dimensjoner fra DN200 leveres med gir.
For operasjonsmoment se side 42.

Standard valves from DN50 to DN150 are delivered with lever.
Dimensions from DN200 are delivered with gear.
For operating torque see page 42.

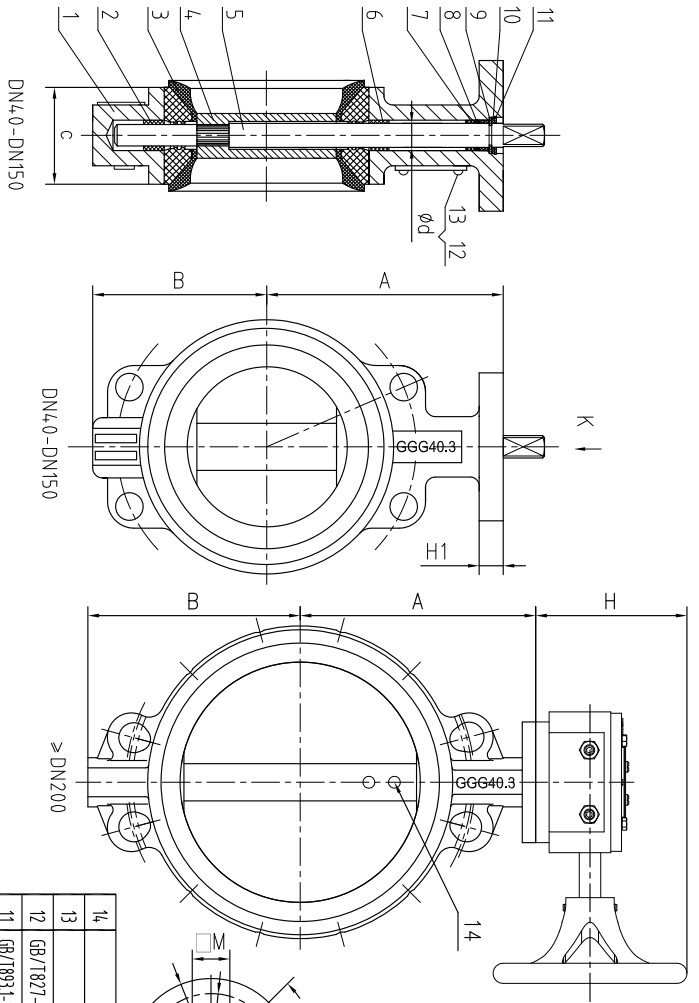


Detalj/Part name	Materiale/Material
Hus/Body	Seigjern/Ductile iron (DI) GGG-40.3
Spjeld/Disc	Al/Br (C95800)
Spindel/Stem	<DN150 316SS/>DN200 17-4PH-SS
Pakning/Sealing	EPDM
Foringer/Bearings	PTFE
Farge/Colour	Rød/Red

DN	Vare nr. Standard	Vare nr. *Free top	M SQ mm	ISO-TOP 5211	h2 mm	Arb.trykk Work. pressure	Vekt Weight Kg
40	5534047	5534254	11	F05	30	16 bar	2,60
50	5534048	5534255	11	F05/07	30	16 bar	3,43
65	5534049	5534256	11	F05/07	30	16 bar	3,80
80	5534051	5534257	11	F05/07	30	16 bar	4,29
100	5534052	5534258	14	F05/07	30	16 bar	5,38
125	5534053	5534259	14	F07	30	16 bar	7,73
150	5534054	5534261	17	F07	30	16 bar	8,68
200	5534055	5534262	17	F07/10	35	10 bar	22,54
250	5534056	5534263	22	F10	38	10 bar	28,40
300	5534057	5534264	27	F12	38	10 bar	41,30
350	5534058	5534265	27	F12	38	10 bar	53,40
400	5534059	5534266	36	F12	38	10 bar	90,40
450	5534061	5534267	36	F14	38	10 bar	101,30
500	5534062	5534268	36	F14	38	10 bar	142,00
600	5534063	5534269	46	F16	38	10 bar	230,00

*Free top = Ventil for montering av aktuator/Valve for mounting of actuator. >M SQ -Montering/ M SQ-Mounting.

Kan leveres med EN 10204- 3.1 sertifikat/Can be delivered with EN 10204- 3.1 certificate.



DN	A	B	C	E	E1	H2	H1	H	Ød	ØF	ØG	ØK	ØL	ØM	ØN
40	120	75	33	23	11	20	50	50	50	70	12.6	12.6	11		
50	134	80	43	29	11	30	50	50	70	13.6	13.6	11			
65	154	80	46	32	11	30	40	50	50	15.6	15.6	11			
80	174	96	50	32	13	30	40	50	50	17.6	17.6	11			
100	194	116	52	32	13	40	40	50	50	19.6	19.6	11			
125	214	127	52	32	13	40	40	50	50	21.6	21.6	11			
150	234	140	52	32	13	40	40	50	50	23.6	23.6	11			
200	274	160	52	32	13	40	40	50	50	27.6	27.6	11			
250	314	180	52	32	13	40	40	50	50	31.6	31.6	11			
300	354	200	52	32	13	40	40	50	50	35.6	35.6	11			
350	394	220	52	32	13	40	40	50	50	39.6	39.6	11			
400	434	240	52	32	13	40	40	50	50	43.6	43.6	11			
450	474	260	52	32	13	40	40	50	50	47.6	47.6	11			
500	514	280	52	32	13	40	40	50	50	51.6	51.6	11			
550	554	300	52	32	13	40	40	50	50	55.6	55.6	11			
600	594	320	52	32	13	40	40	50	50	59.6	59.6	11			
650	634	340	52	32	13	40	40	50	50	63.6	63.6	11			
700	674	360	52	32	13	40	40	50	50	67.6	67.6	11			
800	754	400	52	32	13	40	40	50	50	75.6	75.6	11			

Item	Standard
Design standard	EN 593:2004
Test standard	EN 12266-1:2003
Face to Face standard	EN 558-1:1996

Num	Code Num	Name	Qty	Material	NW	GW
14		PN	2	T1-4PH		
13		PLATE	1			
12	GB/7821-1986	RIVET 2.0X5	2	Al		
11	GB/7893.1-1986	RATAINING RING	1			
10		WASHER	1	SS304		
9	GB/7893.4.1-1986	RATAINING RING	1			
8		O RING	1	EPDM		
7		BUSHING II	2	F4		
6		BUSHING I	1	F4		
5		STEM	1	ØDN20,3SS, 2XDN20,4PH		
4		DISC	1	AL-BR		
3		SEAT RING	1	EPDM		
2		LOWER BUSHING	1	F4		
1		BODY	1	GGG40.3		

Itemref	Quantity	Title/Name, designation, material, dimension etc	Article No./Reference
Designed by	jp	Checked by	Approved by - date
File name	Date	11/12/20	Scale
Assembly Drawing DN40-DN800 Butterflyvalve(Short)			
SIP-11W			Edition C
			Sheet

Standard valves from DN40 to DN150 are delivered with lever.
Dimensions from DN200 are with gear

Flange drilling:
DN40-150 PN16/ANSI CL.150
DN200-800 PN10/ANSI CL.150
Pressure class:
DN40-150 PN16
DN200-800 PN10

Dreiespjeldventil Lug Butterfly valve Lug type

*

SIP - 11LT

Anbefalte bruksområder:

Ventil for bruk på RSW anlegg/
kjølevannssystemer maks. temp. 120°C.

Flenseboring:

DN 40 - 150 PN16
DN 200 - 600 PN10

Trykkklasse:

DN 40 - 150 PN16
DN 200 - 600 PN10

Recommended usage:

Valve for use in RSW applications and HVAC
systems. Max temp. 120°C.

Flange drilling:

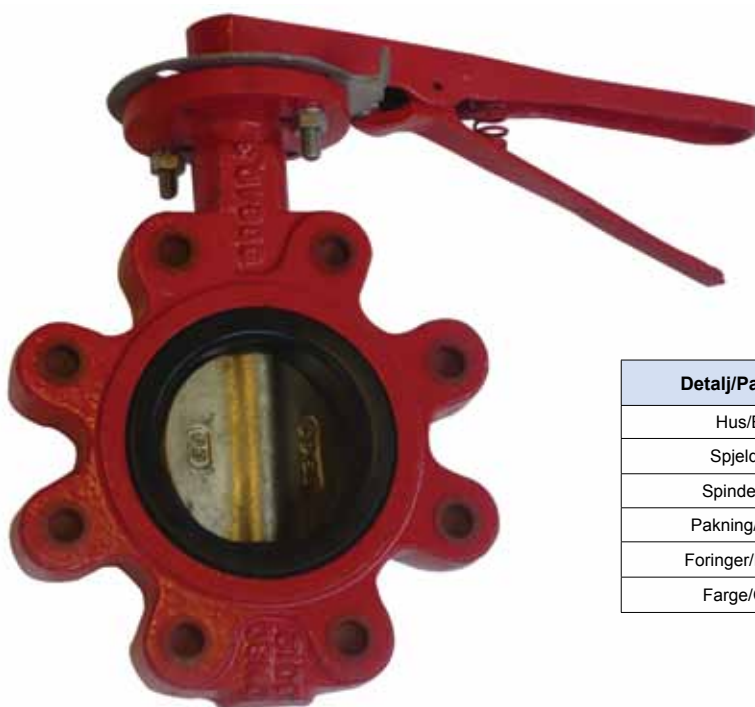
DN 40 - 150 PN 6
DN 200 - 600 PN10

Pressure class:

DN 40- 150 PN16
DN 200 - 600 PN10

Standard ventiler fra DN50 til og med DN150 leveres med spak.
Dimensjoner fra DN200 leveres med gir.
For operasjonsmoment se side 42.

Standard valves from DN50 to DN150 are delivered with lever.
Dimensions from DN200 are delivered with gear.
For operating torque see page 42.

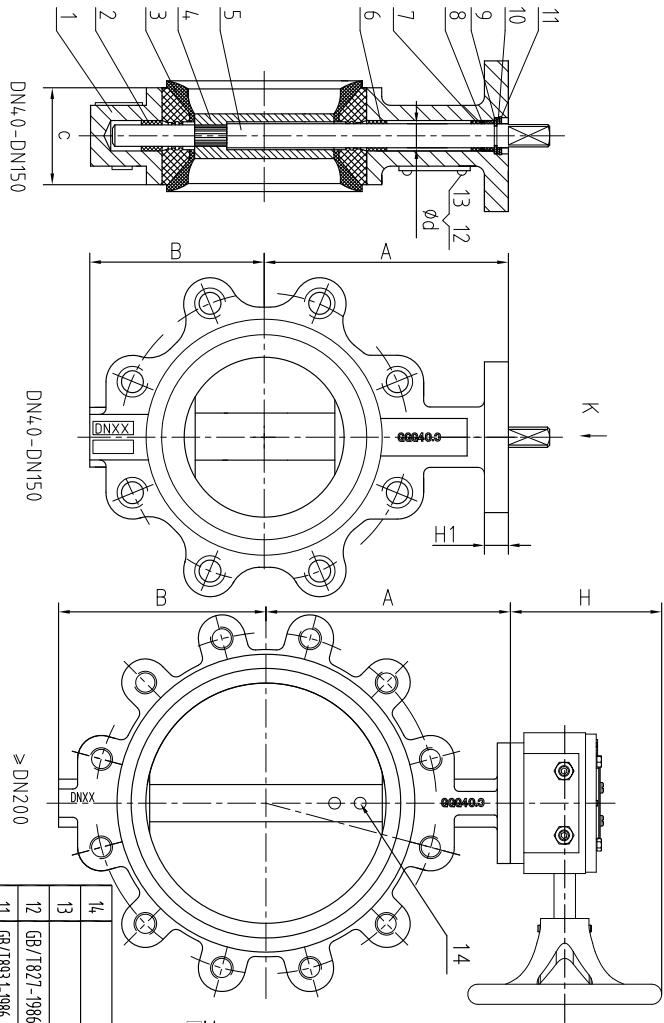


Detalj/Part name	Materiale/Material
Hus/Body	Seigjern/Ductile iron (DI) GGG-40.3
Spjeld/Disc	Al/Br (C95800)
Spindel/Stem	<DN150 316SS/>DN200 17-4PH-SS
Pakning/Sealing	EPDM
Foringer/Bearings	PTFE
Farge/Colour	Rød/Red

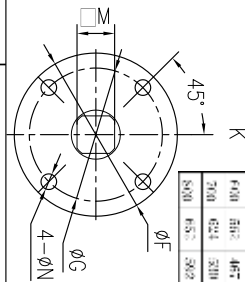
DN	Vare nr. Standard	Vare nr. *Free top	M SQ mm	ISO-TOP 5211	h2 mm	Arb.trykk Work. pressure	Vekt Weight Kg
40	5534064	5534271	11	F05	30	16 bar	2,73
50	5534065	5534272	11	F05/07	30	16 bar	4,15
65	5534066	5534273	11	F05/07	30	16 bar	4,20
80	5534067	5534274	11	F05/07	30	16 bar	5,39
100	5534068	5534275	14	F05/07	30	16 bar	7,34
125	5534069	5534276	14	F07	30	16 bar	10,01
150	5534071	5534277	17	F07	30	16 bar	10,91
200	5534072	5534278	17	F07/10	35	10 bar	25,00
250	5534073	5534279	22	F10	38	10 bar	34,40
300	5534074	5534281	27	F12	38	10 bar	60,80
350	5534075	5534282	27	F12	38	10 bar	77,20
400	5534076	5534283	36	F12	38	10 bar	136,20
450	5534077	5534284	36	F14	38	10 bar	172,80
500	5534078	5534285	36	F14	38	10 bar	206,20
600	5534079	5534286	46	F16	38	10 bar	295,00

*Free top = Ventil for montering av aktuator/Valve for mounting of actuator. >M SQ -Montering/ M SQ-Mounting.

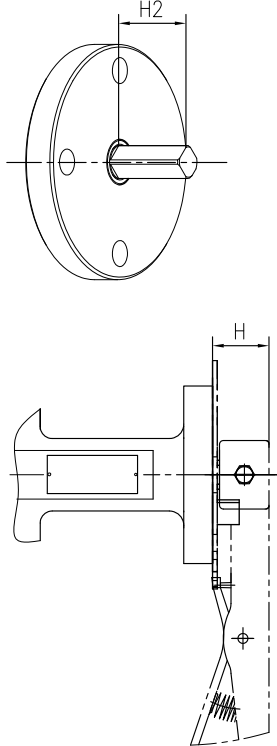
Kan leveres med EN 10204- 3.1 sertifikat/Can be delivered with EN 10204- 3.1 certificate.



DN	A	B	C	E	E1	H2	H1	H	K	14	13	12	11	10	9	8	7	6	5	4	3	2	1	
40	120	75	33	22	11	20	50	50	70	12.6	1	20	50	50	70	12.6	1	20	50	50	70	12.6	1	20
50	154	90	43	29	11	30	60	60	70	15.6	1	30	60	60	70	15.6	1	30	60	60	70	15.6	1	30
65	194	100	53	39	11	40	70	70	80	18.6	1	40	70	70	80	18.6	1	40	70	70	80	18.6	1	40
80	234	110	63	49	11	50	80	80	90	21.6	1	50	80	80	90	21.6	1	50	80	80	90	21.6	1	50
100	274	120	73	59	11	60	90	90	100	24.6	1	60	90	90	100	24.6	1	60	90	90	100	24.6	1	60
125	314	130	83	69	11	70	100	100	110	27.6	1	70	100	100	110	27.6	1	70	100	100	110	27.6	1	70
150	354	140	93	79	11	80	110	110	120	30.6	1	80	110	110	120	30.6	1	80	110	110	120	30.6	1	80
200	434	160	113	99	11	100	130	130	150	36.6	1	100	130	130	150	36.6	1	100	130	130	150	36.6	1	100
250	514	180	133	119	11	120	150	150	170	42.6	1	120	150	150	170	42.6	1	120	150	150	170	42.6	1	120
300	594	200	153	139	11	140	170	170	190	48.6	1	140	170	170	190	48.6	1	140	170	170	190	48.6	1	140
350	674	220	173	159	11	160	190	190	210	54.6	1	160	190	190	210	54.6	1	160	190	190	210	54.6	1	160
400	754	240	193	179	11	180	210	210	230	60.6	1	180	210	210	230	60.6	1	180	210	210	230	60.6	1	180
450	834	260	213	199	11	200	230	230	250	66.6	1	200	230	230	250	66.6	1	200	230	230	250	66.6	1	200
500	914	280	233	219	11	220	250	250	270	72.6	1	220	250	250	270	72.6	1	220	250	250	270	72.6	1	220
550	994	300	253	239	11	240	270	270	290	78.6	1	240	270	270	290	78.6	1	240	270	270	290	78.6	1	240
600	1074	320	273	259	11	260	290	290	310	84.6	1	260	290	290	310	84.6	1	260	290	290	310	84.6	1	260
650	1154	340	293	279	11	280	310	310	330	90.6	1	280	310	310	330	90.6	1	280	310	310	330	90.6	1	280
700	1234	360	313	299	11	300	330	330	350	96.6	1	300	330	330	350	96.6	1	300	330	330	350	96.6	1	300
750	1314	380	333	319	11	320	350	350	370	102.6	1	320	350	350	370	102.6	1	320	350	350	370	102.6	1	320
800	1394	400	353	339	11	340	370	370	390	108.6	1	340	370	370	390	108.6	1	340	370	370	390	108.6	1	340



Item	Standard
Design standard	EN 593:2004
Test standard	EN 12266-1:2003
Face to Face standard	EN 558-1:1996



Standard valves from DN40 to DN150 are delivered with lever.
Dimensions from DN200 are with gear

Flange drilling:
DN40-150 PN16
DN200-800 PN10
Pressure class:
DN40-150 PN16
DN200-800 PN10

Num	Code Num	Name	Qty	Material	NW	GW
1		BODY	1	GGG403		
2		LOWER BUSHING	1	F4		
3		SEAT RING	1	EPDM		
4		DISC	1	AL-8R		
5		STEM	1	40NiCrMoS5, 40NiCrMo14PH		
6		BUSHING I	1	F4		
7		BUSHING II	2	F4		
8		O RING	1	EPDM		
9	GB/T893.4-1986	RATAINING RING	1	SS304		
10		WASHER	1	SS304		
11	GB/T893.1-986	RATAINING RING	1			
12	GB/T893.1-986	RIVET 2.0X5	2	Al		
13		PLATE	1			
14		PN	2	T1-4PH		

Itemref	Quantity	Title/Name, designation, material, dimension etc	Article No./Reference
Designed by	jp	Checked by	Approved by - date
File name	Date	11/12/20	Scale
Assembly Drawing DN40-DN800Butterflyvalve(Short)			
SIP-11LT		Edition	Sheet
		C	

Dreiespjeldventil Wafer Butterfly valve Wafer

*

SIP - 13W

Anbefalte bruksområder:

Standard ventil for bruk til vann sjøvann, olje mm.
Maks temperatur 80°C.

Flenseboring:

DN 40 - 150 PN16/ ANSI CL.150
DN 200 - 600 PN10/ ANSI CL.150

Trykkklasse:

DN 40 - 150 PN16
DN 200 - 600 PN10

Recommended usage:

Standard valve for water, seawater, oil etc.
Max temperature 80°C.

Flange drilling:

DN 40 - 150 PN16/ ANSI CL.150
DN 200 - 600 PN10/ ANSI CL.150

Pressure class:

DN 40 - 150 PN16
DN 200 - 600 PN10

Standard ventiler fra DN40 til og med DN150 leveres med spak.
Dimensjoner fra DN200 leveres med gir.
For operasjonsmoment se side 42.

Standard valves from DN40 to DN150 are delivered with lever.
Dimensions from DN200 are delivered with gear.
For operating torque see page 42.

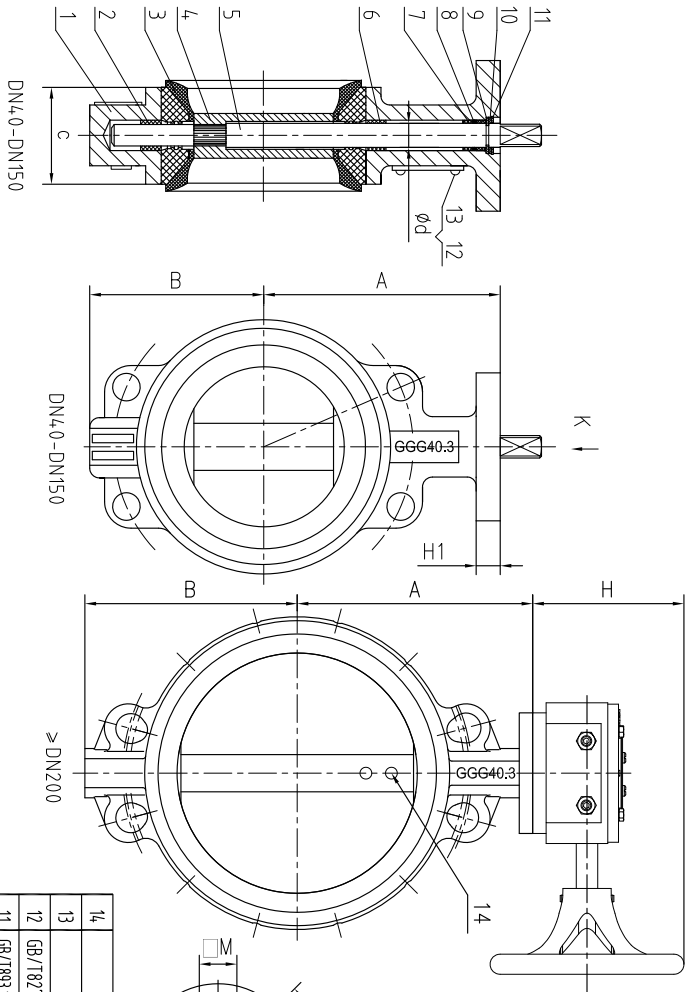


Detalj/Part name	Materiale/Material
Hus/Body	Seigjern/Ductile iron (DI) GGG-40.3
Spjeld/Disc	Al/Br (C95800)
Spindel/Stem	<DN150 316SS/>DN200 17-4PH-SS
Pakning/Sealing	NBR
Foringer/Bearings	PTFE
Farge/Colour	Blå/Blue

DN	Vare nr. Standard	Vare nr. *Free top	M SQ mm	ISO-TOP 5211	h2 mm	Arb.trykk Work. pressure	Vekt Weight Kg
40	5534081	5534287	11	F05	30	16 bar	2,60
50	5534082	5534288	11	F05/07	30	16 bar	3,43
65	5534083	5534289	11	F05/07	30	16 bar	3,80
80	5534084	5534291	11	F05/07	30	16 bar	4,29
100	5534085	5534292	14	F05/07	30	16 bar	5,38
125	5534086	5534293	14	F07	30	16 bar	7,73
150	5534087	5534294	17	F07	30	16 bar	8,68
200	5534088	5534295	17	F07/10	35	10 bar	22,52
250	5534089	5534296	22	F10	38	10 bar	28,40
300	5534091	5534297	27	F12	38	10 bar	41,30
350	5534092	5534298	27	F12	38	10 bar	53,40
400	5534093	5534299	36	F12	38	10 bar	90,40
450	5534094	5534301	36	F14	38	10 bar	101,30
500	5534095	5534302	36	F14	38	10 bar	142,00
600	5534096	5534303	46	F16	38	10 bar	230,00

*Free top = Ventil for montering av aktuator/Valve for mounting of actuator. >M SQ -Montering/ M SQ-Mounting.

Kan leveres med EN 10204- 3.1 sertifikat/Can be delivered with EN 10204- 3.1 certificate.



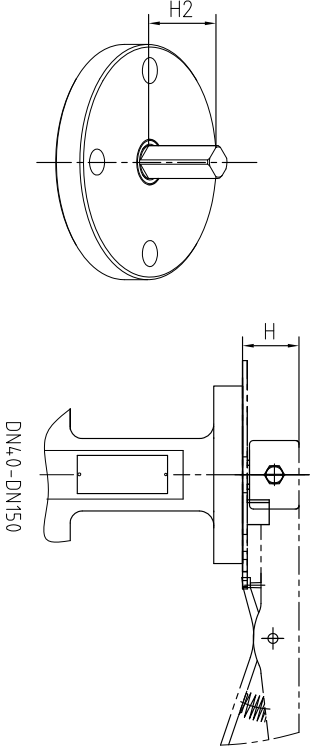
DN	A	B	C	H	H1	H2	ØF	ØG	ØK	ØL	ØM	ØN	ØP	M
40	120	75	31	32	11	30	60/70	77.0	12.5					11
50	134	80	41	39	11	30	60/70	77.0	12.5					11
65	134	88	46	32	11	30	60/70	77.0	12.5					11
80	151	96	48	32	11	30	60/70	77.0	12.5					11
100	176	114	52	32	11	30	60/70	77.0	12.5					11
125	198	127	52	32	11	30	60/70	77.0	12.5					11
150	224	141	52	32	11	30	60/70	77.0	12.5					11
200	273	171	60	34	14	35	70/102	102.2	22.1					17
250	314	197	62	34	14	38	125	102	12	28.45				22
300	353	225	72	38	15	40	150	113	14	31.6				27
350	398	255	78	38	15	40	150	113	14	31.6				27
400	430	283	92	37	15	38	150	113	14	31.6				27
450	472	312	114	37	15	38	150	113	14	31.6				27
500	519	341	127	37	15	38	150	113	14	31.6				27
600	552	407	151	38	15	38	150	113	14	31.6				27
700	624	336	169	40	16	32	300	234	8	41.8	38.53	46.53	46.53	46
800	652	392	190	40	16	32	300	234	8	41.8	40.53	49.53	49.53	46

Item	Standard
Design standard	EN 593:2004
Test standard	EN 12266-1:2003
Face to Face standard	EN 558-1:1996

Num	Code Num	Name	Qty	Material	NW	GW
14		PN	2	T7-4PH		
13		PLATE	1			
12	GB/7821-1986	RIVET 2.0X5	2	Al		
11	GB/7893-1-1986	RATAINING RING	1			
10		WASHER	1	SS304		
9	GB/7893.4-1-1986	RATAINING RING	1			
8		O RING	1	NBR		
7		BUSHING II	2	F4		
6		BUSHING I	1	F4		
5		STEM	1	ØDN20,3SS, 3xINDEN, T7-4PH		
4		DISC	1	AL-BR		
3		SEAT RING	1	NBR		
2		LOWER BUSHING	1	F4		
1		BODY	1	GGG40.3		

Standard valves from DN40 to DN150 are delivered with lever.

Dimensions from DN200 are with gear



Flange drilling:
 DN40-150 PN16/ANSI CL.150
 DN200-800 PN10/ANSI CL.150
 Pressure class:
 DN40-150 PN16
 DN200-800 PN10

Itemref	Quantity	Title/Name, designation, material, dimension etc	Article No./Reference
Designed by	jp	Checked by	Approved by - date
File name	Date	11/12/20	Scale
Assembly Drawing DN40-DN800 Butterflyvalve(Short)			
SIP-13W			Edition C
			Sheet

Dreiespjeldventil Lug Butterfly valve Lug

*

SIP - 13LT

Anbefalte bruksområder:

Standard ventil for bruk til vann, sjøvann, olje mm.
Godkjent som Bunn- og over bord ventil for skip og
ellers utsatte plasser. Min. 18% el. for klasse-
sertifikat. Maks temp. 80°C.

Flenseboring:

DN 40 - 150 PN16
DN 200 - 600 PN10

Trykkklasse:

DN 40 - 150 PN16
DN 200 - 600 PN10

Recommended usage:

For use on ships, for bottom and hull and under
other special working conditions. Min. 18% el. for
class certificate. Max temperature 80°C.

Flange drilling:

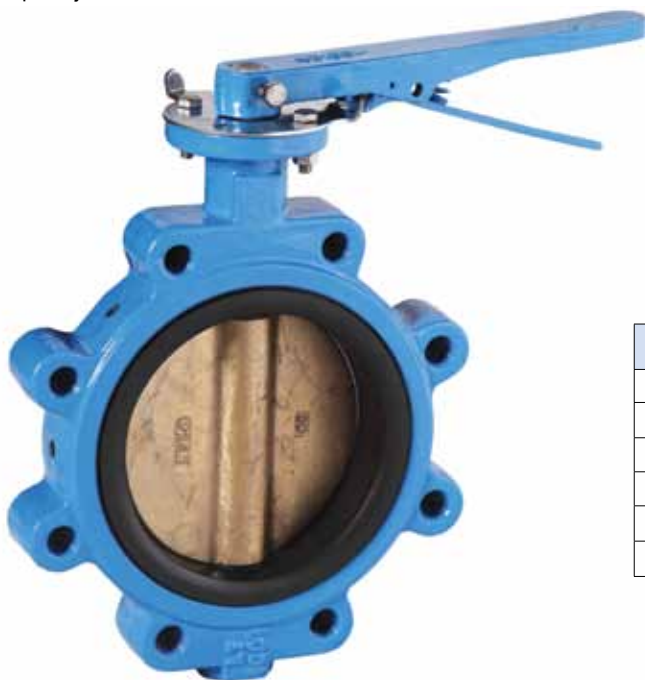
DN 40 - 150 PN16
DN 200 - 600 PN10

Pressure class:

DN 40 - 150 PN16
DN 200 - 600 PN10

Standard ventiler fra DN40 til og med DN150 leveres med spak.
Dimensjoner fra DN200 leveres med gir.
For operasjonsmoment se side 42.

Standard valves from DN40 to DN150 are delivered with lever.
Dimensions from DN200 are delivered with gear.
For operating torque see page 42.

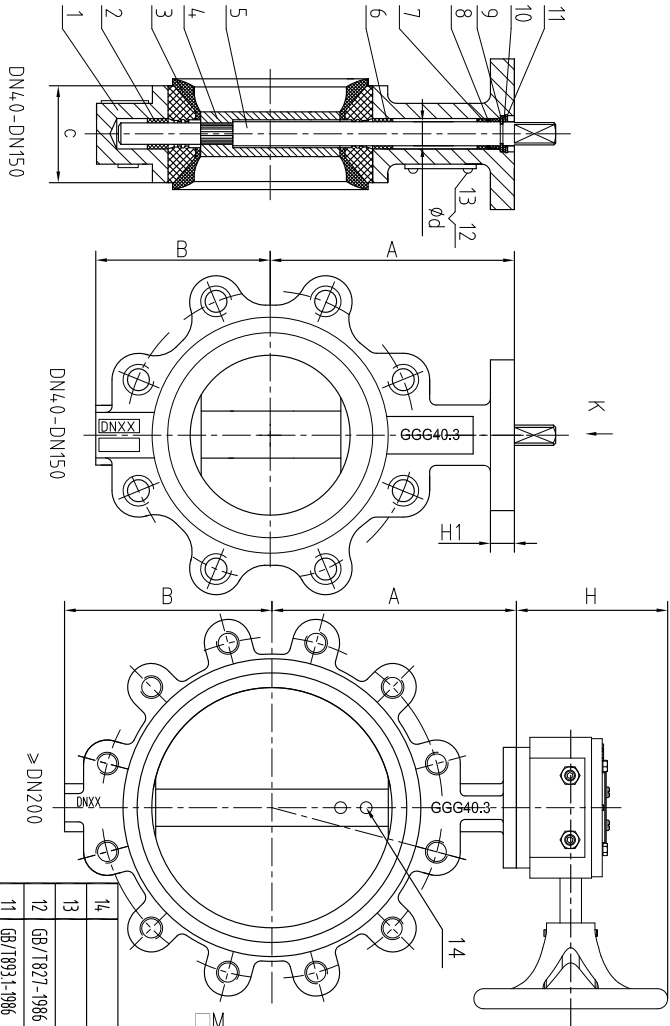


Detalj/Part name	Materiale/Material
Hus/Body	Seigjern/Ductile iron (DI) GGG-40.3
Spjeld/Disc	Al/Br (C95800)
Spindel/Stem	<DN150 316SS/>DN200 17-4PH-SS
Pakning/Sealing	NBR
Foringer/Bearings	PTFE
Farge/Colour	Blå/Blue

DN	Vare nr. Standard	Vare nr. *Free top	Vare nr. DNV Cert. vlv.	M SQ mm	ISO-TOP 5211	Arb.trykk Work. pressure	Vekt Weight Kg
40	5534097	5534304	5533945	11	F05	16 bar	2,73
50	5534098	5534305	5533946	11	F05/07	16 bar	4,15
65	5534099	5534306	5533947	11	F05/07	16 bar	4,20
80	5534101	5534307	5533948	11	F05/07	16 bar	5,29
100	5534102	5534308	5533949	14	F05/07	16 bar	7,34
125	5534103	5534309	5533951	14	F07	16 bar	10,01
150	5534104	5534311	5533952	17	F07	16 bar	10,91
200	5534105	5534312	5533953	17	F07/10	10 bar	25,00
250	5534106	5534313	5533954	22	F10	10 bar	34,40
300	5534107	5534314	5533955	27	F12	10 bar	60,80
350	5534108	5534315	5533956	27	F12	10 bar	77,20
400	5534109	5534316	5533957	36	F12	10 bar	136,20
450	5534111	5534317	5533958	36	F14	10 bar	172,80
500	5534112	5534318	5533959	36	F14	10 bar	206,20
600	5534113	5534319	5533961	46	F16	10 bar	295,00

*Free top = Ventil for montering av aktuator/Valve for mounting of actuator. >M SQ -Montering/ M SQ-Mounting.

Kan leveres med EN 10204- 3.1 sertifikat/Can be delivered with EN 10204- 3.1 certificate.



DN	A	B	C	H	H1	H2	ØF	ØG	ØK	ØL	ØM	ØN	ØP	M
40	120	75	31	32	11	30	60/70	77.0	12.5	11				
50	134	80	41	39	11	30	60/70	77.0	17.6	11				
65	154	88	46	32	11	30	60/70	77.0	17.6	11				
80	175	96	48	32	11	30	60/70	77.0	15.77	11				
100	198	104	52	32	11	30	60/70	77.0	15.77	11				
125	218	112	52	32	11	30	60/70	77.0	15.77	11				
150	238	120	52	32	11	30	60/70	77.0	15.77	11				
200	283	140	52	32	11	30	60/70	77.0	15.77	11				
250	328	160	52	32	11	30	60/70	77.0	15.77	11				
300	373	180	52	32	11	30	60/70	77.0	15.77	11				
350	418	200	52	32	11	30	60/70	77.0	15.77	11				
400	463	220	52	32	11	30	60/70	77.0	15.77	11				
450	508	240	52	32	11	30	60/70	77.0	15.77	11				
500	553	260	52	32	11	30	60/70	77.0	15.77	11				
550	598	280	52	32	11	30	60/70	77.0	15.77	11				
600	643	300	52	32	11	30	60/70	77.0	15.77	11				
650	688	320	52	32	11	30	60/70	77.0	15.77	11				
700	733	340	52	32	11	30	60/70	77.0	15.77	11				
750	778	360	52	32	11	30	60/70	77.0	15.77	11				
800	823	380	52	32	11	30	60/70	77.0	15.77	11				

Item	Standard
Design standard	EN 593:2004
Test standard	EN 12266-1:2003
Face to Face standard	EN 558-1:1996

Num	Code Num	Name	Qty	Material	NW	GW
1		BODY	1	GGG40.3		
2		LOWER BUSHING	1	F4		
3		SEAT RING	1	NBR		
4		DISC	1	AL-BR		
5		STEM	1	ØMMØ3.03SS.ØMMØØ1.4PH		
6		BUSHING I	1	F4		
7		BUSHING II	2	F4		
8		O RING	1	NBR		
9	GB/7893.4.1-1986	RATAINING RING	1	SS304		
10		WASHER	1	SS304		
11	GB/7893.1-1986	RATAINING RING	1	AI		
12	GB/7871-1986	RIVET 2.0X5	2	AI		
13		PLATE	1			
14		PN	2	T7-4PH		

Itemref	Quantity	Title/Name, designation, material, dimension etc	Article No./Reference
Designed by	jp	Checked by	Approved by - date
File name	Date	11/12/20	Scale
Assembly Drawing DN40-DN800 Butterflyvalve(Short)			
SIP-13LT			
Edition C			
Sheet			

Standard valves from DN40 to DN150 are delivered with lever.
Dimensions from DN200 are with gear

Flange drilling:
DN40-150 PN16
DN200-800 PN10
Pressure class:
DN40-150 PN16
DN200-800 PN10

Dreiespjeldventil Wafer Butterfly valve Wafer

*

SIP - 14W

Anbefalte bruksområder:

Ventil for bruk spesielt på cargosystemer med 20/25 bars trykk, mud og brine osv.

Flenseboring:

DN 50- 150 PN40
DN 200- 400 PN25

Trykkklasse:

DN 50 - 150 PN25
DN 200 - 400 PN20

Recommended usage:

Valve for cargo systems, 20/25 bar.
For Mud and brine etc.

Flange drilling:

DN 50- 150 PN40
DN 200- 400 PN25

Pressure class:

DN 50 - 150 PN25
DN 200 - 400 PN20

Standard ventiler fra DN50 til og med DN150 leveres med spak.
Dimensjoner fra DN200 leveres med gir.
For operasjonsmoment se side 42.

Standard valves from DN50 to DN150 are delivered with lever.
Dimensions from DN200 are delivered with gear.
For operating torque see page 42.

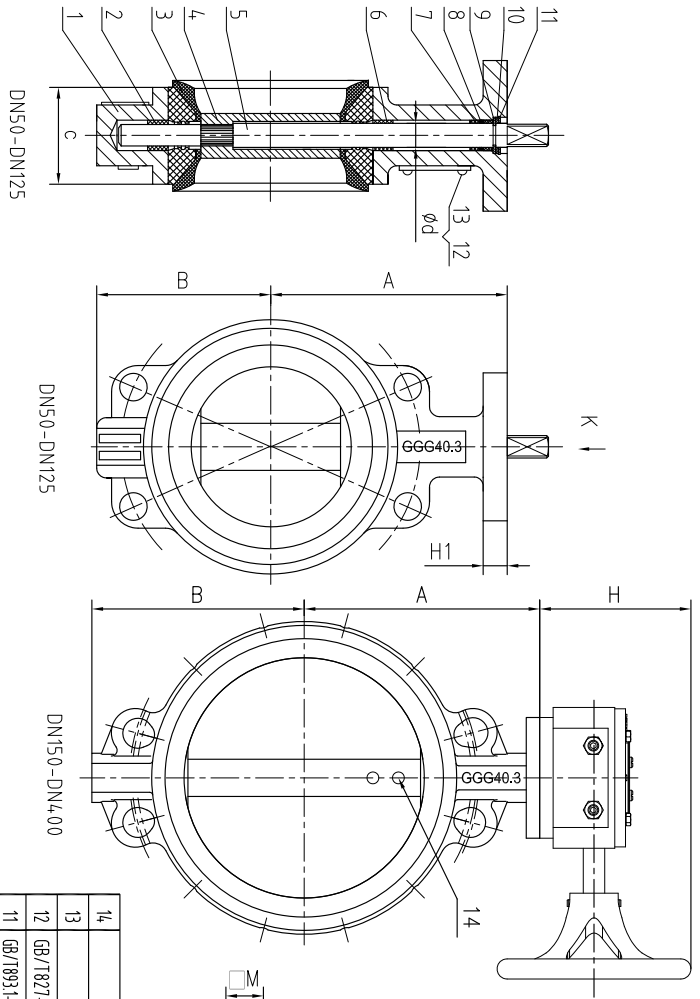


Detalj/Part name	Materiale/Material
Hus/Body	Seigjern/Ductile iron (DI) GGG-40.3
Spjeld/Disc	Al/Br (C95800)
Spindel/Stem	17-4PH-SS
Pakning/Sealing	NBR
Foringer/Bearings	PTFE
Farge/Colour	Svart/Black

DN	Vare nr. Standard	Vare nr. *Free top	M SQ mm	ISO-TOP 5211	h2 mm	Arb.trykk Work. pressure	Vekt Weight Kg
50	5534114	5534321	11	F05/07	30	25 bar	3,43
65	5534115	5534322	11	F05/07	30	25 bar	3,80
80	5534116	5534323	11	F05/07	30	25 bar	4,29
100	5534117	5534324	14	F05/07	30	25 bar	5,38
125	5534118	5534325	14	F07	30	25 bar	7,13
150	5534119	5534326	17	F07	30	25 bar	8,68
200	5534121	5534327	17	F07/10	35	20 bar	22,52
250	5534122	5534328	22	F10	38	20 bar	28,40
300	5534123	5534329	27	F12	38	20 bar	41,30
350	5534124	5534331	27	F12	38	20 bar	53,40
400	5534125	5534332	36	F12	38	20 bar	90,40

*Free top= Ventil for montering av aktuator/Valve for mounting of actuator. >M SQ -Montering/ M SQ-Mounting.

Lagerført med EN10204 - 3.2 DNV sertifikat/Stocked with EN 10204- 3.2 certificate.



PN	A	B	C	T1	T1'	Ø1'	Ø2	Ø3	Ø4	M
50	124	80	43	32	11	30	90	50,70	70,0	12,6
55	134	89	46	32	11	30	90	50,70	70,0	12,6
60	141	96	49	32	13	30	90	50,70	70,0	12,6
100	186	114	59	32	13	30	90	50,70	70,0	12,77
125	186	127	56	32	13	30	90	50,70	70,0	12,77
150	194	140	57	30	13	30	90	50,70	70,0	12,92
200	212	176	67	84	14	33	100	50,70	70,0	13,1
250	214	220	68	81	14	33	100	50,70	70,0	13,45
300	261	266	75	85	20	39	120	50,70	70,0	13,6
350	288	288	75	85	20	39	120	50,70	70,0	13,6
400	318	318	102	105	20	38	120	50,70	70,0	13,8

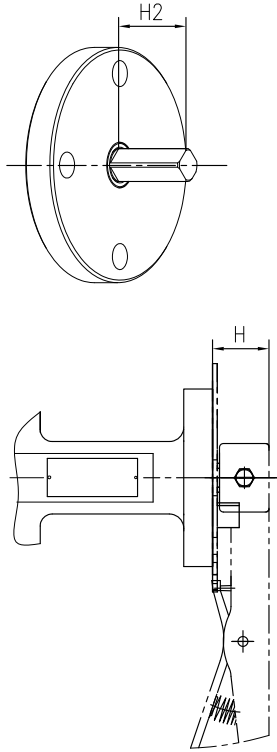
Item	Standard
Design standard	EN 593:2004
Test standard	EN 12266-1:2003
Face to Face standard	EN 559-1:1996

Num	Code Num	Name	Qty	Material	NW	GW
14		PN	2	T1-4PH		
13		PLATE	1			
12	GB/7871-1986	RIVET 2.0X5	2	Al		
11	GB/7893-1-1986	RATAINING RING	1			
10		WASHER	1	SS304		
9	GB/7893-4-1-1986	RATAINING RING	1			
8		O RING	1	NBR		
7		BUSHING II	2	F4		
6		BUSHING I	1	F4		
5		STEM	1	T1-4PH		
4		DISC	1	AL-BR		
3		SEAT RING	1	NBR		
2		LOWER BUSHING	1	F4		
1		BODY	1	GGG40.3		

Itemref	Quantity	Title/Name, designation, material, dimension etc	Article No./Reference
Designed by	jp	Checked by	Approved by - date
File name	Date	11/12/20	Scale

Assembly Drawing		Edition	
DNS0-DN400 Butterflyvalve(Short)		C	
SIP-14W		Sheet	

Standard valves from DN50 to DN150 are delivered with lever.
Dimensions from DN200 are with gear



Flange drilling:
DN50-150 PN40
DN200-400 PN25
Pressure class:
DN50-150 PN25
DN200-400 PN20

Dreiespjeldventil Lug Butterfly valve Lug

*

SIP - 14LT

Anbefalte bruksområder:

Ventil for bruk spesielt på cargosystemer med 20/25 bars trykk, mud og brine osv.

Flenseboring:

DN 50- 150 PN40
DN 200- 400 PN25

Trykkklasse:

DN 50 - 150 PN25
DN 200 - 400 PN20

Recommended usage:

Valve for cargo systems, 20/25 bar.
For Mud and brine etc.

Flange drilling:

DN 50- 150 PN40
DN 200- 400 PN25

Pressure class:

DN 50 - 150 PN25
DN 200 - 400 PN20

Standard ventiler fra DN50 til og med DN150 leveres med spak.
Dimensjoner fra DN200 leveres med gir.
For operasjonsmoment se side 42.

Standard valves from DN50 to DN150 are delivered with lever.
Dimensions from DN200 are delivered with gear.
For operating torque see page 42.

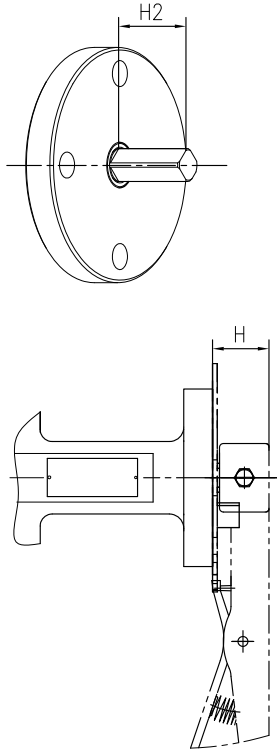
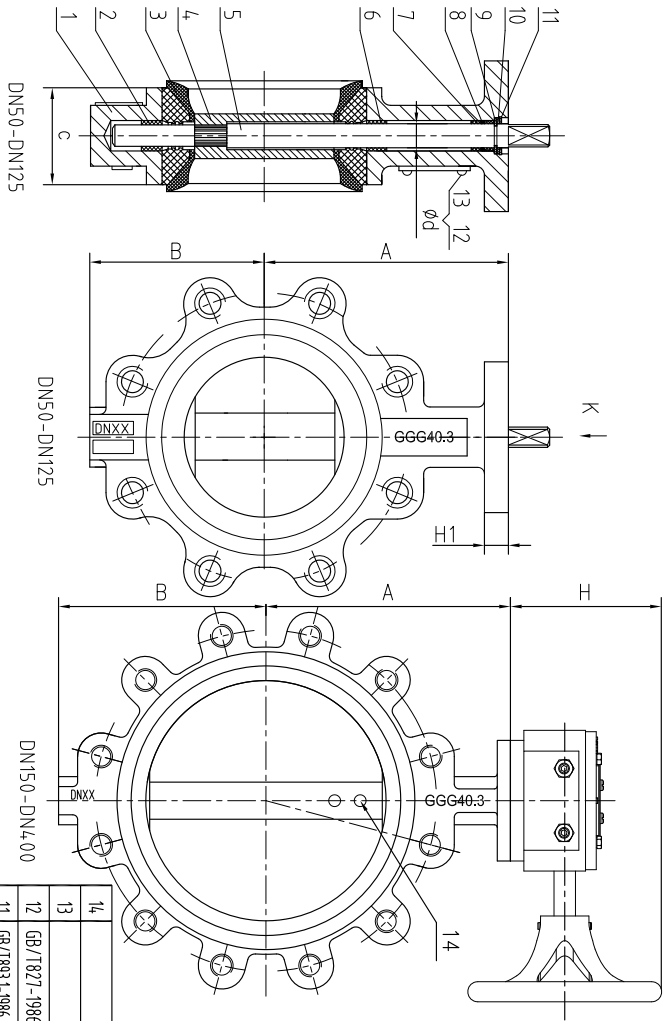


Detalj/Part name	Materiale/Material
Hus/Body	Seigjern/Ductile iron (DI) GGG-40.3
Spjeld/Disc	Al/Br (C95800)
Spindel/Stem	17-4PH-SS
Pakning/Sealing	NBR
Foringer/Bearings	PTFE
Farge/Colour	Svart/Black

DN	Vare nr. Standard	Vare nr. *Free top	M SQ mm	ISO-TOP 5211	h2 mm	Arb.trykk Work. pressure	Vekt Weight Kg
50	5534128	5534335	11	F05/07	30	25 bar	4,15
65	5534129	5534336	11	F05/07	30	25 bar	4,20
80	5534131	5534337	11	F05/07	30	25 bar	5,39
100	5534132	5534338	14	F05/07	30	25 bar	7,34
125	5534133	5534339	14	F07	30	25 bar	10,01
150	5534134	5534341	17	F07	30	25 bar	10,91
200	5534135	5534342	17	F07/10	35	20 bar	25,00
250	5534136	5534343	22	F10	38	20 bar	34,40
300	5534137	5534344	27	F12	38	20 bar	60,80
350	5534138	5534345	27	F12	38	20 bar	77,20
400	5534139	5534346	36	F12	38	20 bar	136,20

*Free top = Ventil for montering av aktuator/Valve for mounting of actuator. >M SQ -Montering/ M SQ-Mounting.

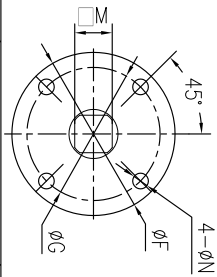
Lagerført med EN10204 - 3.2 DNV sertifikat/Stocked with EN 10204- 3.2 certificate.



Standard valves from DN50 to DN150 are delivered with lever.
Dimensions from DN200 are with gear

Flange drilling:
DN50-150 PN40
DN200-400 PN25
Pressure class:
DN50-150 PN25
DN200-400 PN20

DN	A	B	C	H	H1	H2	øF	øG	4-øN	ød	M
50	124	50	43	52	11	20	90	50/70	7/10	12.6	11
65	134	69	46	52	11	30	90	50/70	7/10	12.6	11
80	141	65	46	52	13	30	90	50/70	7/10	12.6	11
100	156	117	52	52	13	30	90	50/70	7/10	15.77	14
125	168	127	56	52	13	30	90	70	10	18.92	14
150	181	113	56	52	13	30	90	70	10	18.92	17
200	213	179	60	67	14	35	125	70/102	10/12	22.1	17
250	244	223	68	62	14	38	125	102	12	28.45	23
300	283	259	78	65	20	38	150	125	14	31.6	27
350	308	293	78	65	20	38	150	125	14	31.6	27
400	300	313	102	125	20	38	150	125	14	31.6	35



Item	Standard
Design standard	EN 593:2004
Test standard	EN 12266-1:2003
Face to Face standard	EN 558-1:1996

Num	Code Num	Name	Qty	Material	NW	GW
14		PN	2	17-4PH		
13		PLATE	1			
12	GB/7827-1986	RIVET 2.0X5	2	Al		
11	GB/7893-1986	RATAINING RING	1			
10		WASHER	1	SS304		
9	GB/7893.4-1986	RATAINING RING	1			
8		O RING	1	NBR		
7		BUSHING II	2	F4		
6		BUSHING I	1	F4		
5		STEM	1	17-4PH		
4		DISC	1	AL-BR		
3		SEAT RING	1	NBR		
2		LOWER BUSHING	1	F4		
1		BODY	1	GGG4.0.3		

Itemref	Quantity	Title/Name, designation, material, dimension etc	Article No./Reference
Designed by	jp	Checked by	Approved by - date
File name	Date	11/12/20	Scale

Assembly Drawing	DN50-DN400 Butterflyvalve(Short)	Edition	Sheet
SIP-14LT		C	

Dreiespjeldventil Wafer Butterfly valve Wafer

*

SIP - 15W

Anbefalte bruksområder:

Ventil for bruk på aggressive medier og høy temperatur. Med teflonbelagt (PTFE) SS316 (CF8M) spjeld.

Recommended usage:

Valve for aggressive fluids and high temperature.

Temperatur:

-20°C +170°C

Temperature range:

-20°C +170°C

Flenseboring:

DN 50- 150 PN16
DN 200- 300 PN10

Trykkklasse:

DN 50 - 150 PN16
DN 200 - 300 PN10

Flange drilling:

DN 50- 150 PN16
DN 200- 300 PN10

Pressure class:

DN 50 - 150 PN16
DN 200 - 300 PN10

Standard ventiler fra DN50 til og med DN125 leveres med spak.
Dimensjoner fra DN150 leveres med gir.
For operasjonsmoment se side 42.

Standard valves from DN50 to DN125 are delivered with lever.
Dimensions from DN150 are delivered with gear.
For operating torque see page 42.

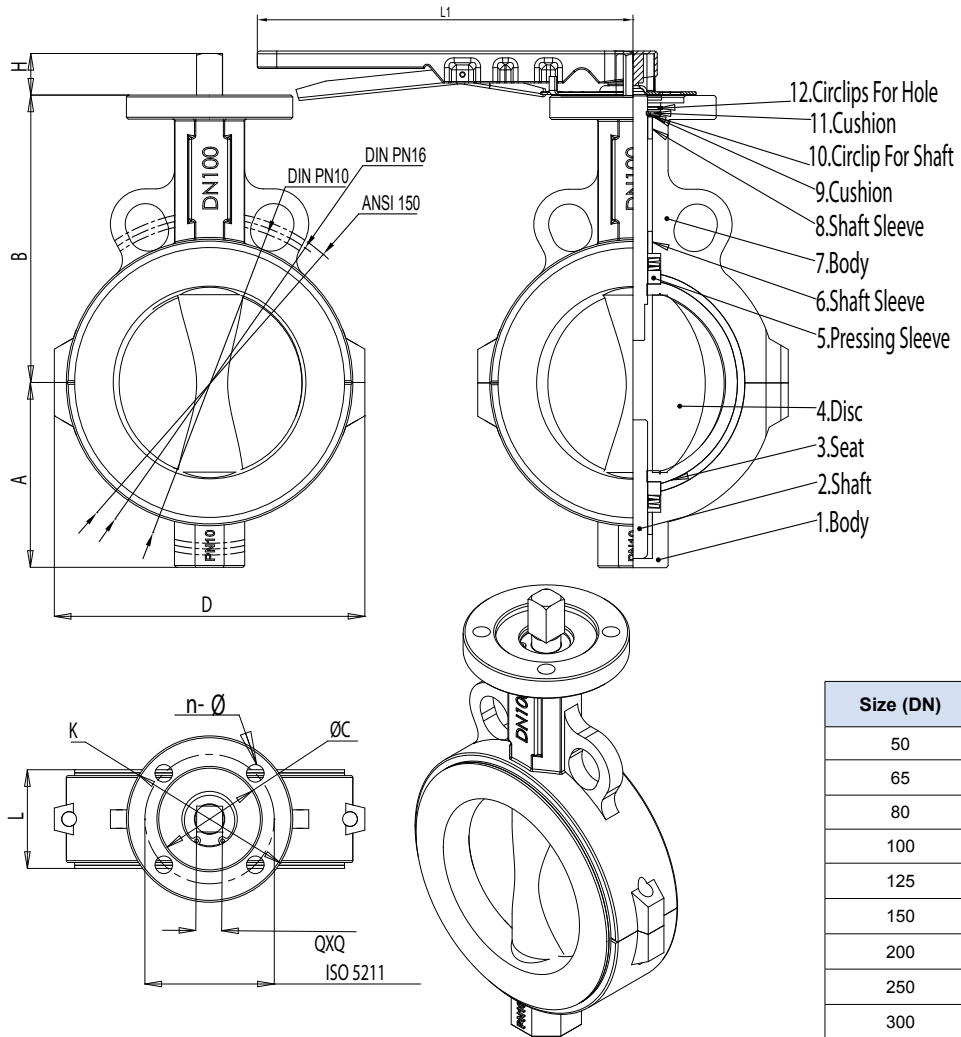


Item	Detalj/Part	Materiale/Material
1	Hus/Body	GGG40.3/Ductile iron
2	Spindel/Stem	SS416
3	Sete/Seat	NBR+PTFE
4	Spjeld/Disc	CF8M+PTFE
5	Presshylse/Pressing Sleeve	FRP
6	Øvre stem/Shaft Sleeve	FRP
7	Hus/Body	GGG40
8	Nedre stem/Shaft Sleeve	FRP
9	Foring/Cushion	Steel
10	Låsering for stem/Circlip For Shaft	Steel
11	Foring/Cushion	Steel
12	Låsering øvre stem/Circlip For Hole	Steel

DN	Vare nr. Part no.	ISO-TOP 5211	Arb.trykk Work. pressure	Vekt Weight Kg
50	5533962	F05/07	16 bar	4,00
65	5533963	F05/07	16 bar	4,20
80	5533964	F05/07	16 bar	5,00
100	5533965	F05/07	16 bar	6,20
125	5533966	F07	16 bar	8,20
150	5533967	F07	16 bar	9,20
200	5533968	F07/10	10 bar	27,00
250	5533969	F10	10 bar	34,30
300	5533971	F12	10 bar	42,90

DN 50 - 125 = Med spak/With levers
DN 150 - 300 = Med gir/With gear

Kan leveres med EN 10204- 3.1 sertifikat/Can be delivered with EN 10204- 3.1 certificate.



Size (DN)	Torque (NM)
50	18 - 25
65	25 - 35
80	38 - 52
100	64 - 85
125	90 - 110
150	120 - 140
200	250 - 350
250	350 - 400
300	450 - 580

Design Standard, Top Flange ISO 5211 Standard, Side Flange ANSI 150PSI/ DIN PN10/ DIN PN16 Standard

DN	A mm	B mm	D mm	L mm	L1 mm	H mm	K mm	ISO 5211	n - Ø	Q x Q	ØC
50	65,0	138	112	47	240	30	65/90	50/70	4-M6/8	11 x 11	55
65	72,0	140	125	50	240	30	65/90	50/70	4-M6/8	11 x 11	55
80	85,0	140	142	50	240	30	65/90	50/70	4-M6/8	11 x 11	55
100	105,5	175	168	55,5	265	30	65/90	50/70	4-M6/8	14 x 14	55
125	120,5	175	202	59	265	30	90	70	4-M8	14 x 14	55
150	137,0	189	230	59	265	30	90	70	4-M8	17 x 17	55
200	169,0	230	283	63	366	35	90/125	70/102	4-M6/10	17 x 17	58
250	202,0	230	344	68	366	38	125	102	4-M10	22 x 22	72
300	236,5	302	497	73	366	38	150	125	4-M12	27 x 27	72
350	251,0	333	470	86	366	45	150	125	4-M12	28 x 28	72
400	311,0	418	568	91	366	45	150	125	4-M12	28 x 28	72

Dreiespjeldventil Lug Butterfly valve Lug

*

SIP - 15LT

Anbefalte bruksområder:

Ventil for bruk på aggressive medier og høy temperatur. Med teflonbelagt (PTFE) SS316 (CF8M) spjeld.

Recommended usage:

Valve for aggressive fluids and high temperature.

Temperatur:

-20°C +170°C

Temperature range:

-20°C +170°C

Flenseboring:

DN 50- 150 PN16
DN 200- 300 PN10

Trykkklasse:

DN 50 - 150 PN16
DN 200 - 300 PN10

Flange drilling:

DN 50- 150 PN16
DN 200- 300 PN10

Pressure class:

DN 50 - 150 PN16
DN 200 - 300 PN10

Standard ventiler fra DN50 til og med DN125 leveres med spak.
Dimensjoner fra DN150 leveres med gir.
For operasjonsmoment se side 42.

Standard valves from DN50 to DN125 are delivered with lever.
Dimensions from DN150 are delivered with gear.
For operating torque see page 42.

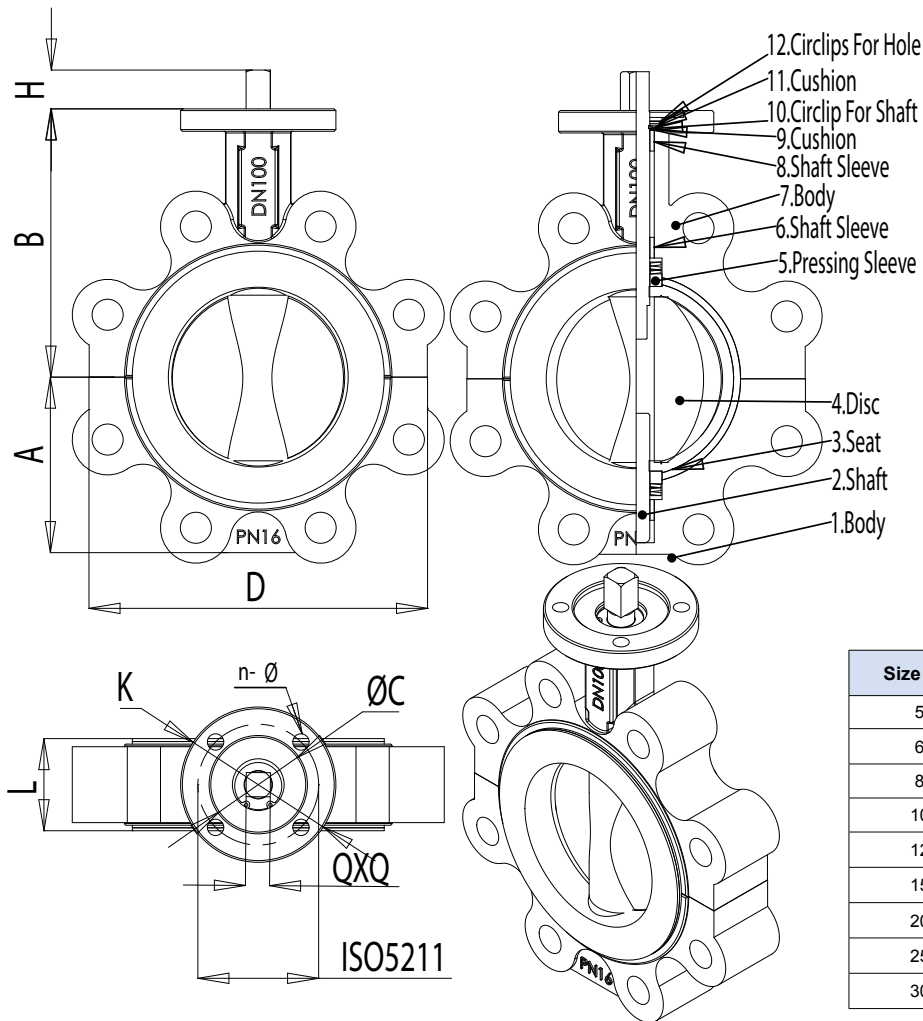


Item	Detalj/Part	Materiale/Material
1	Hus/Body	GGG40.3/Ductile iron
2	Spindel/Stem	SS
3	Sete/Seat	NBR+PTFE
4	Spjeld/Disc	316 + PTFE
5	Presshylse/Pressing Sleeve	FRP
6	Øvre stem/Shaft Sleeve	FRP
7	Hus/Body	GGG40
8	Nedre stem/Shaft Sleeve	FRP
9	Foring/Cushion	Stål/Steel
10	Låsering for stem/Circlip For Shaft	Stål/Steel
11	Foring/Cushion	Stål/Steel
12	Låsering øvre stem/Circlip For Hole	Stål/Steel

DN	Vare nr. Part no.	ISO-TOP 5211	Arb.trykk Work. pressure	Vekt Weight Kg
50	5533972	F05/07	16 bar	4,00
65	5533973	F05/07	16 bar	4,20
80	5533974	F05/07	16 bar	5,00
100	5533975	F05/07	16 bar	6,20
125	5533976	F07	16 bar	8,20
150	5533977	F07	16 bar	9,20
200	5533978	F07/10	10 bar	27,00
250	5533979	F10	10 bar	34,30
300	5533981	F12	10 bar	42,90

DN 50 - 125 = Med spak/With levers
DN 150 - 300 = Med gir/With gear

Kan leveres med EN 10204- 3.1 sertifikat/Can be delivered with EN 10204- 3.1 certificate.



Size (DN)	Torque (NM)
50	18 - 25
65	25 - 35
80	38 - 52
100	64 - 85
125	90 - 110
150	120 - 140
200	250 - 350
250	350 - 400
300	450 - 580

DN	A mm	B mm	D mm	L mm	L1 mm	H mm	K mm	ISO 5211	n - Ø	Q x Q	ØC
50	60	138	153	47	240	32	65	50	4 - 6.7	11 x 11	35
65	72	140	155	50	240	32	65	50	4 - 6.7	11 x 11	35
80	85	140	180	50	240	32	65	50	4 - 6.7	11 x 11	35
100	102	160	205	55,5	265	32	90	70	4 - 10.3	14 x 14	55
125	120	175	240	59	265	32	90	70	4 - 10.3	14 x 14	55
150	137	189	265	59	265	32	90	70	4 - 10.3	17 x 17	55
200	169	230	320	63	366	32	90	70	4 - 14.5	17 x 17	55
250	200	260	385	68	366	45	125	102	4 - 14.5	22 x 22	72
300	230	306	450	73	366	45	125	102	4 - 14.5	27 x 27	72
350	251	333	480	86	366	45	125	102	4 - 14.5	28 x 28	72
400	311	418	555	91	366	45	125	102	4 - 14.5	28 x 28	72

Dreiespjeldventil HP Wafer (316)

Butterfly valve high performance Wafer (316)

*

SIP - 16W

Anbefalte bruksområder:

Vann, olje og gass, kjemikalier og damp.

Recommended usage:

Water, oil, gas, chemicals and steam.

Temperatur:

-50°C +200°C

Temperature range:

-50°C +200°C

Flens:

PN10/16/25/40

Trykkklasse:

PN40

Flange drilling:

PN10/16/25/40

Pressure class:

PN40

Operering:

DN65 - DN100 spak (316)

DN125 - DN300 marinegir (GG.25)

Operation:

DN65 - DN100 lever (316)

DN125 - DN300 marine ductile iron (GG.25)

316-disk/sete minimum 2,7 % molybden.

NB: Enveisventil!

316-disc/seat minimum 2,7 % molybden.

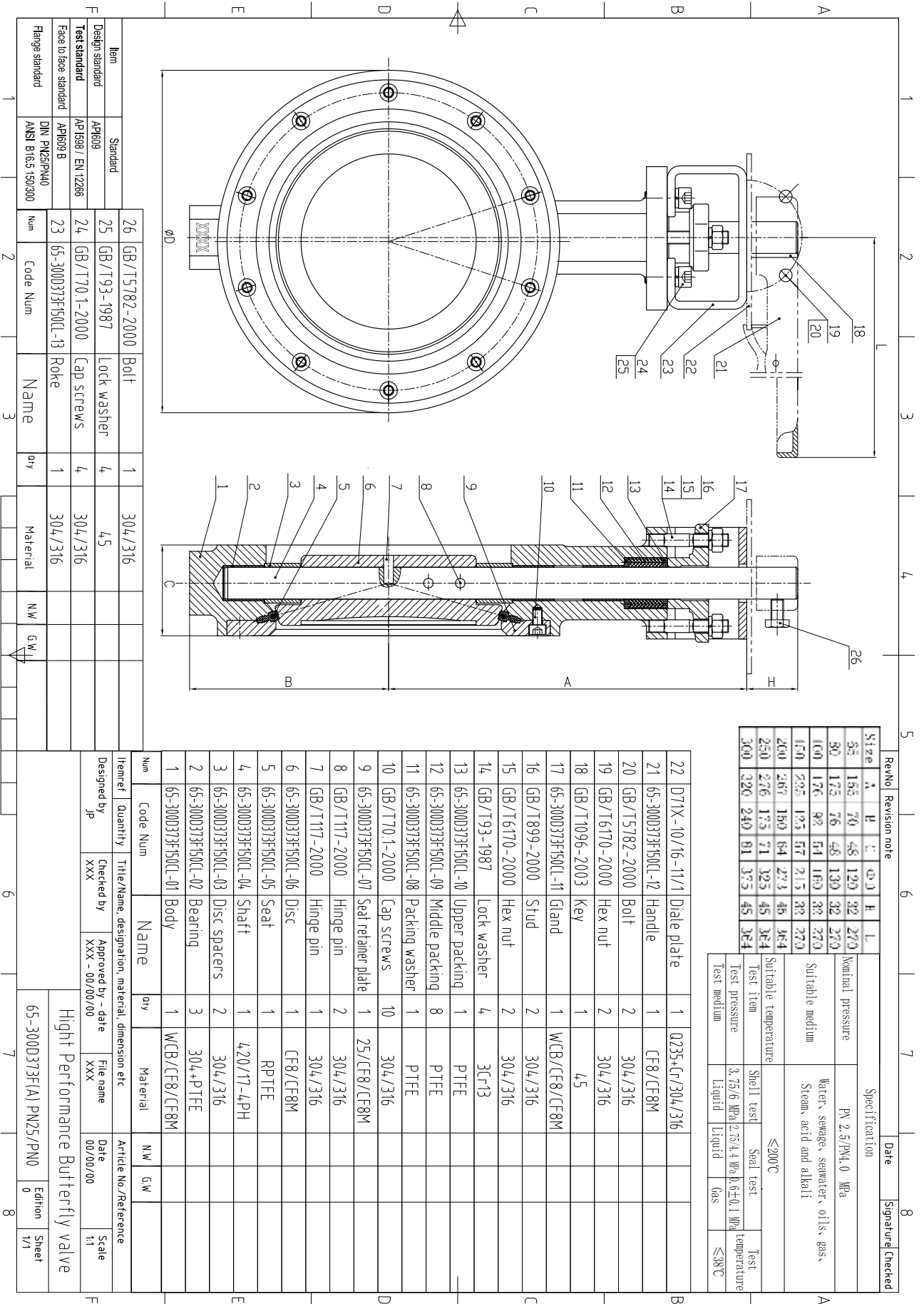
Note: Single direction!



Detalj/Part name	Materiale/Material
Hus/Body	CF8M/CF8/WCB
Spjeld/Disc	CF8M/CF8/WCB
Spindel/Stem	17-4PH
Sete/Seat	RTFE+Silicone
Foring/Bushing	PTFE
Toppflens/Top flange	ISO 5211

DN	Vare nr. Part no.	Arb.trykk Work. pressure	Vekt Weight Kg
65	5533501	40 bar	5,00
80	5533502	40 bar	6,00
100	5533503	40 bar	8,00
125	5533504	40 bar	11,00
150	5533505	40 bar	14,00
200	5533506	40 bar	22,00
250	5533507	40 bar	40,00
300	5533508	40 bar	55,00

Kan leveres med EN 10204- 3.1 sertifikat/Can be delivered with EN 10204- 3.1 certificate.



Size	A	H	C	Φ D	H	L
55	155	70	48	120	32	270
90	175	76	48	130	32	270
100	176	92	54	160	32	270
150	225	125	57	215	32	270
200	267	160	64	273	45	364
250	276	175	71	325	45	364
300	320	240	81	375	45	364

Revision	Revision note	Date	Signature	Checked
1				

Skisse: ©Ahsell Norge AS - www.ahsell.no/Drawing: ©Ahsell Norge AS - www.ahsell.no

Dreiespjeldventil Lug

Butterfly valve Lug

*

SIP - 17LT

Anbefalte bruksområder:

Ventil for bruk til vann sjøvann, olje mm.
For operasjonsmoment se side 42.

Flenseboring:

DN 200 - 300 PN16

Trykkklasse:

DN 200 - 300 PN16

Recommended usage:

Valve for water, seawater, oil etc.
For operating torque see page 42.

Flange drilling:

DN 200 - 300 PN16

Pressure class:

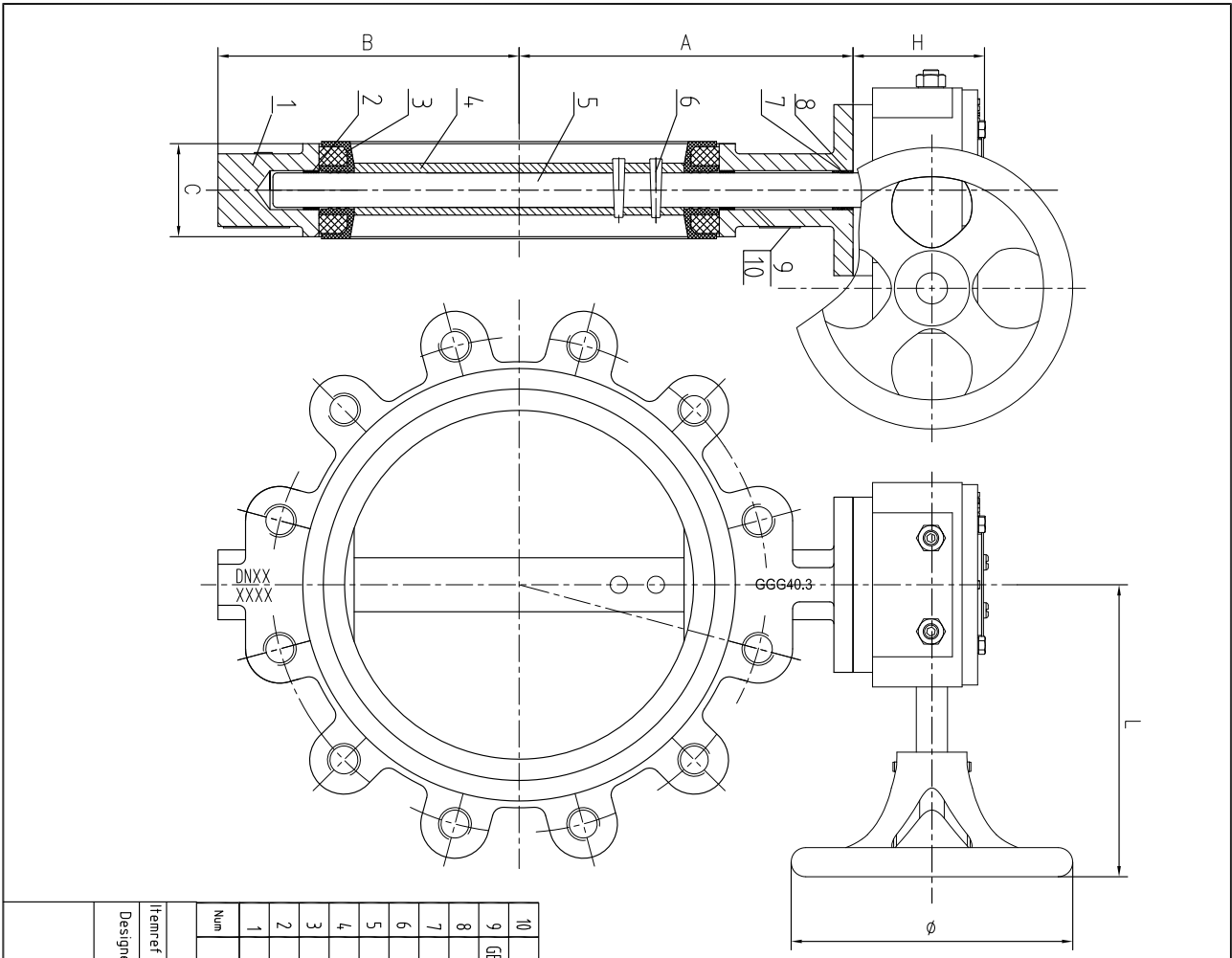
DN 200 - 300 PN16



Detalj/Part name	Materiale/Material
Hus/Body	Seigjern/Ductile iron (DI) GGG-40.3
Spjeld/Disc	Al/Br (C95800)
Spindel/Stem	17-PH SS
Pakning/Sealing	NBR
Foringer/Bearings	PTFE
Farge/Colour	Blå/Blue

DN	Vare nr. Part no.	ISO-TOP 5211	Arb.trykk Work. pressure	Vekt Weight Kg
200	5534143	F07/10	16 bar	25,00
250	5534144	F10	16 bar	34,40
300	5534145	F12	16 bar	60,80

Kan leveres med EN 10204- 3.1 sertifikat/Can be delivered with EN 10204- 3.1 certificate.



DN	A	B	C	H	L	Φ	ISO
200	213	175	60	84	171	300	F0710
250	244	220	68	84	171	300	F10
300	283	255	78	85	224	300	F12
350	368	268	78	85	224	300	F12
400	400	318	102	125	254	300	F12

Flange drilling:
 DN200-400 PN16
 Pressure class:
 DN200-400 PN16

Item	Standard
Design standard	EN 593:2004
Test standard	EN 12266-1:2003
Face to Face standard	EN 558-1:1996

Num	Code Num	Name	Qty	Material	NW	GW
10		PLATE	1			
9	GB/1827-1986	RIVET 2.0X5	2	Al		
8		BUSHING II	2	F4		
7		O RING	1	NBR		
6		Pin	2	17-4PH		
5		STEM	1	17-4PH		
4		DISC	1	AL-BR		
3		SEAT RING	1	NBR		
2		BUSHING	2	F4		
1		BODY	1	GGG4.0.3		

Itemref	Quantity	Title/Name, designation, material, dimension etc	Article No./Reference
Designed by	Checked by	Approved by - date	Date
jp			11/12/20
		File name	Scale

Assembly Drawing DN200-DN400 Butterflyvalve(Short)		Edition	Sheet
SIP-17LT		C	

Skisse: ©Ahsell Norge AS - www.ahsell.no/Drawing: ©Ahsell Norge AS - www.ahsell.no

Dreiespjeldventil Lug Butterfly valve Lug

*

SIP - 19LT

Anbefalte bruksområder:

Ventil for bruk i applikasjoner for spesialprodukter, og der installasjonen har behov for multianvendelser. Maks. temperatur 135°C.

Recommended usage:

Valve for use for special products, where multi-applications are requested. Max. temperature 135°C.

Flenseboring:

DN 50 - 150 PN16
DN 200 - 600 PN10

Trykkklasse:

DN 50 - 150 PN16
DN 200 - 600 PN10

Flange drilling:

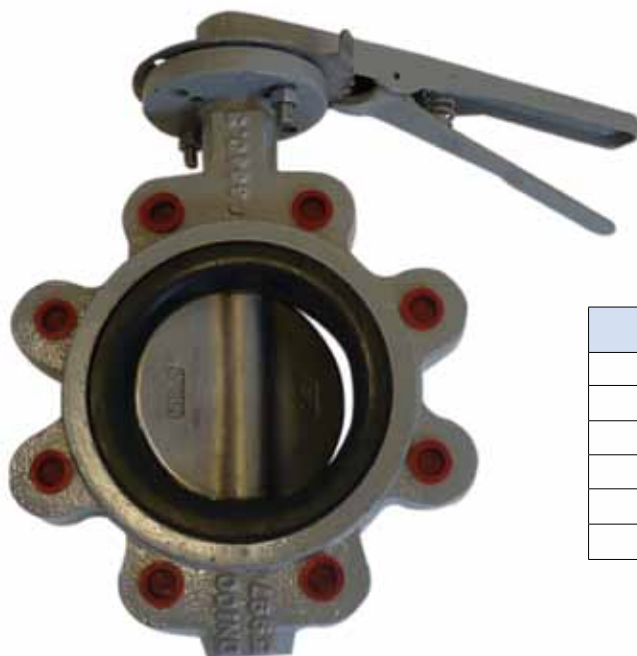
DN 50 - 150 PN16
DN 200 - 600 PN10

Pressure class:

DN 50 - 150 PN16
DN 200 - 600 PN10

Standard ventiler fra DN40 til og med DN150 leveres med spak. Dimensjoner fra DN200 leveres med gir.
For operasjonsmoment se side 42.

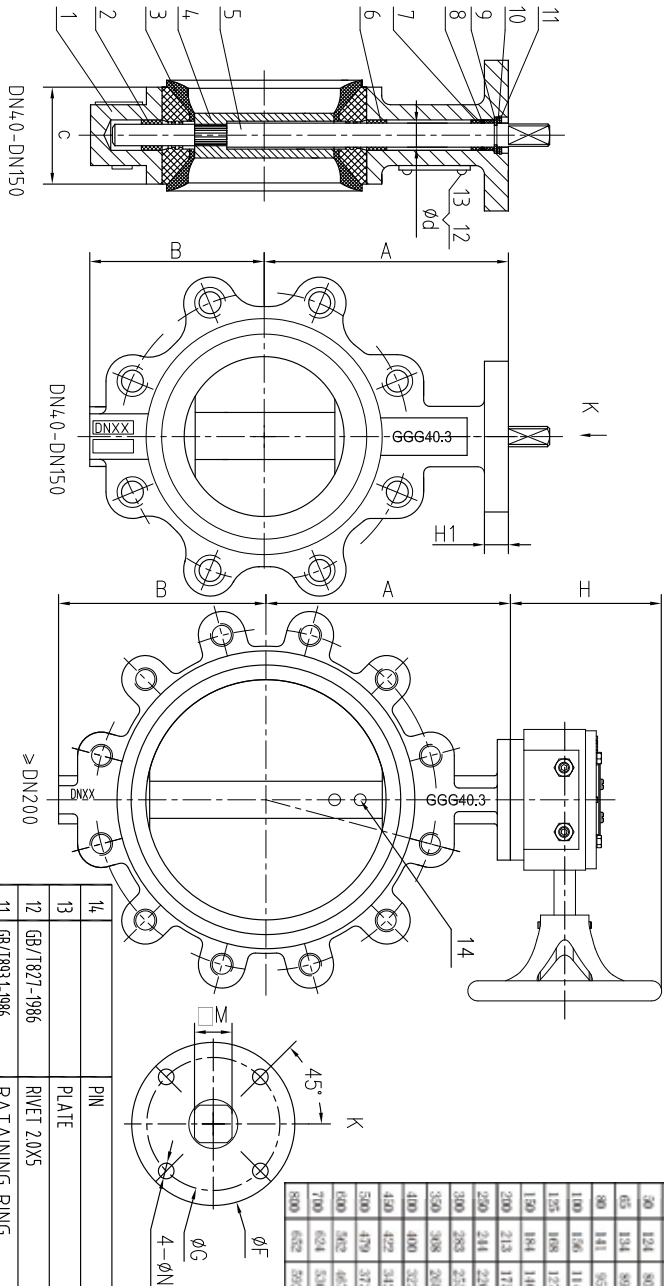
Standard valves from DN40 to DN150 are delivered with lever. Dimensions from DN200 are delivered with gear.
For operating torque see page 42.



Detalj/Part name	Materiale/Material
Hus/Body	Seigjern/Ductile iron (DI) GGG-40.3
Spjeld/Disc	316SS, (1.4408)
Spindel/Stem	17-4PH-SS
Pakning/Sealing	Viton
Foringer/Bearings	PTFE
Farge/Colour	Grå/Grey

DN	Vare nr. Part no.	ISO-TOP 5211	Arb.trykk Work. pressure	Vekt Weight Kg
40	-	F05	16 bar	4,20
50	5534351	F05/07	16 bar	4,33
65	5534352	F05/07	16 bar	5,09
80	5534353	F05/07	16 bar	5,92
100	5534354	F05/07	16 bar	7,45
125	5534355	F07	16 bar	10,45
150	5534356	F07	16 bar	11,28
200	5534357	F07/10	10 bar	26,67
250	-	F10	10 bar	42,30
300	-	F12	10 bar	65,50
350	-	F12	10 bar	81,90
400	-	F12	10 bar	122,50
450	-	F14	10 bar	132,90
500	-	F14	10 bar	228,30
600	-	F16	10 bar	327,30

Kan leveres med EN 10204- 3.1 sertifikat/Can be delivered with EN 10204- 3.1 certificate.



DN	A	B	C	H	H1	H2	ØF	ØC	4-ØN	Ød	M
40	120	75	31	32	11	30	60	50/70	7/10	12.0	11
50	124	80	43	32	11	30	90	50/70	7/10	12.6	11
65	134	89	40	32	11	30	90	50/70	7/10	12.6	11
80	141	95	46	32	13	30	90	50/70	7/10	12.6	11
100	156	114	52	32	13	30	90	50/70	7/10	15.77	14
125	168	127	56	32	13	30	90	70	10	18.92	14
150	184	140	56	32	13	30	90	70	10	18.92	17
200	214	175	60	194	14	35	125	70/102	10/12	22.1	17
250	244	220	68	194	14	38	125	102	12	28.45	22
300	285	255	78	189	20	38	150	125	14	31.6	27
350	308	268	78	189	20	38	150	125	14	31.6	27
400	400	323	102	274	20	38	150	125	14	33.15	36
450	422	342	114	274	20	38	210	140	18	37.95	36
500	479	373	127	274	22	38	210	140	18	41.12	36
600	562	467	154	285	22	38	300	254	8-Ø18	50.62	46
700	624	530	165	432	29	72	300	254	8-Ø18	63.35	2-M3X18
800	652	592	190	432	32	100	300	254	8-Ø18	63.35	2-M3X18

Item	Standard
Design standard	EN 593:2004
Test standard	EN 12266-1:2003
Face to Face standard	EN 558-1:1996

Num	Code Num	Name	Qty	Material	NW	GW
14		PN	2	T1-4PH		
13		PLATE	1			
12	GB/7827-1986	RIVET 2.0X5	2	Al		
11	GB/7893-1-1986	RATAINING RING	1			
10		WASHER	1	SS304		
9	GB/7893.4-1-1986	RATAINING RING	1			
8		O RING	1	WITON		
7		BUSHING II	2	F4		
6		BUSHING I	1	F4		
5		STEM	1	Ø10X36SS-3-M3X10-1-4PH		
4		DISC	1	316SS		
3		SEAT RING	1	WITON		
2		LOWER BUSHING	1	F4		
1		BODY	1	GGG40.3		

Itemref	Quantity	Title/Name, designation, material, dimension etc	Article No./Reference
Designed by	jp	Checked by	Approved by - date
File name	Date	11/12/20	Scale
Assembly Drawing DN40-DN800 Butterflyvalve(Storf)			
SIP-19LT			
Edition C			
Sheet			

Standard valves from DN40 to DN150 are delivered with lever.
Dimensions from DN200 are with gear

Flange drilling:
DN40-150 PN16
DN200-800 PN10
Pressure class:
DN40-150 PN16
DN200-800 PN10

Tilbakeslagsventil Wafer type Non Return Check Valve Wafer type

*

SIP Duo check

Anbefalte bruksområder:

Standard ventil, for bruk til vann, sjøvann, olje mm.
Ventilen kan monteres i alle retninger.

NB!

Anbefalt montering av tilbakeslagsventiler er 8 rørdiameter fra pumpe og/eller bænd. Om dette ikke er praktisk mulig, må det tilstrebes størst mulig avstand. Dette er en anbefaling basert på erfaringer i ventil- og rørdesign. Hensikten er å redusere turbulent strømning gjennom ventilen og dermed unngå at ventilen får en kortere levetid som følge av komponent vibrasjoner.

- Klaffventil, gummibelagt som en dreiespjeldventil.
Fully elastomer lined check valve.
- DN 50 - 150 -tett fra 1,0 bar til 16 bar differansetrykk.
Tight shutoff from 15 to 250 psi DP.
- DN 200 - 400 -tett fra 1,7 bar til 10 bar differansetrykk.
Tight shutoff from 25 to 150 psi DP.
- Bruk av doble fjærer fordeler trykkrefter rundt hele platen, dette resulterer i hurtig respons på tilbakestrømning.
Use of dual springs distributes the load force across the entire plate, resulting in quick response to flow reversal.

Recommended usage:

Standard valve for water, seawater, oil etc.
Can be mounted in any direction.

Note!

Recommended mounting of check valves 8 pipe diameters downstream from the pump discharge or pipe elbow. If this is not feasible, the valve should be mounted downstream as far as possible. This recommendation is common practice in valve and piping engineering. Its purpose is to reduce the likelihood of turbulent flow through the valve, which could shorten valve life due to component vibrations.

Wafer- type:

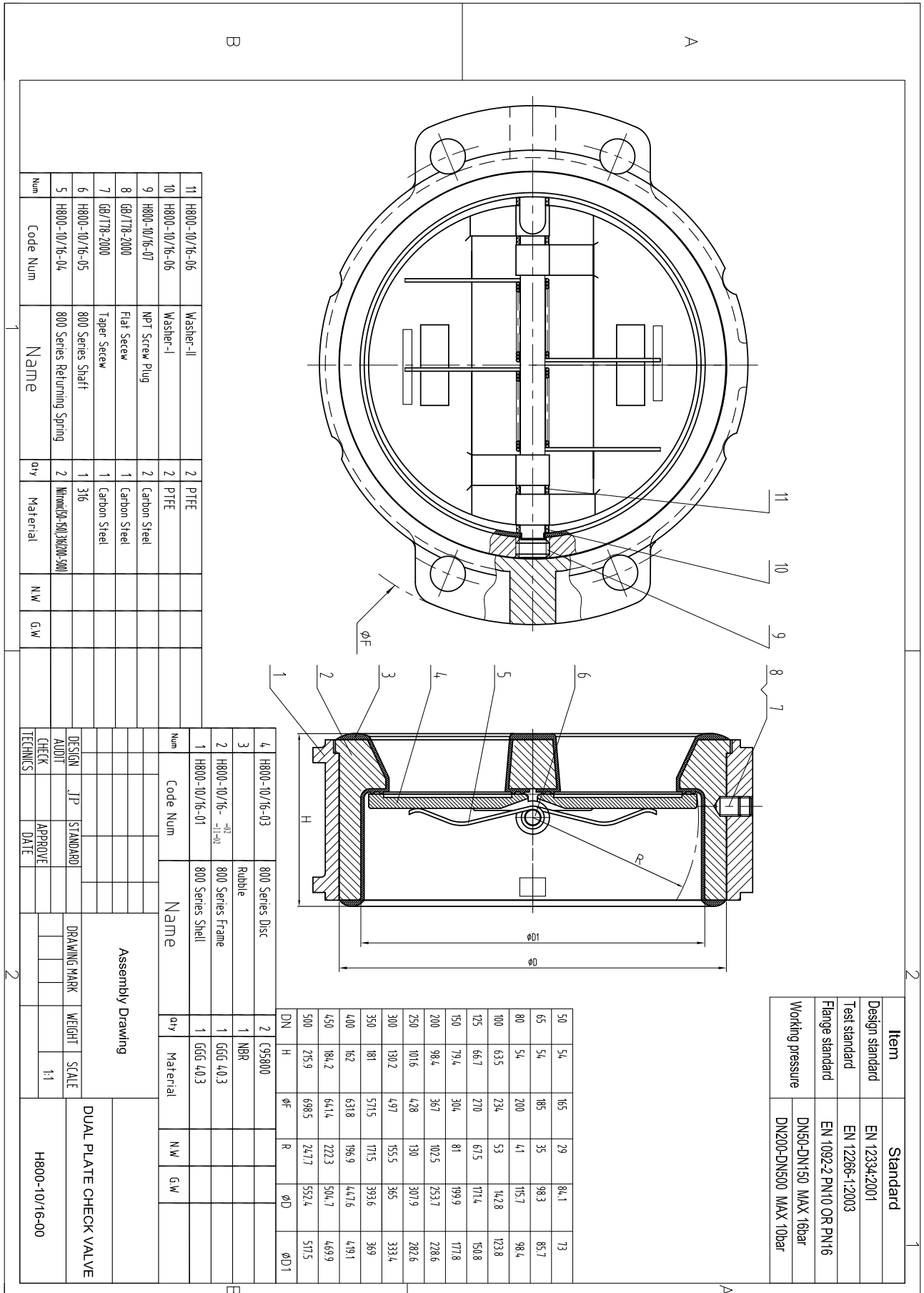
- Ventil for fastspenning mellom flenser PN16/10.
- For mounting between flanges PN16/10



Detalj/Part name	Materiale/Material
Hus/Body	Seigjern gummi belagt/Rubber covered ductile iron
Spjeld/Disc	Al/Br C95800 (viton-316SS)
Aksel/Shaft	316SS
Pakning/Sealing	NBR, EPDM or Viton
Aksel plugg/Shaft plug	316SS
Fjærer/Springs	2"- 6"- Nitronic 50, 8"-16"- 316SS
Trustskiver/Trust discs	Teflon
Opphengsører/Adj. body	Støpejern/Cast iron
Farge/Colour	Blå/Blue, Rød/Red, Grå/Grey

DN	Vare nr. NBR	Vare nr. EPDM	Vare nr. Viton	Arb.trykk Work. pressure	Vekt Weight Kg
50	5534197	5534212	5534361	16 bar	2,10
65	5534198	5534213	5534362	16 bar	2,90
80	5534199	5534214	5534363	16 bar	3,30
100	5534201	5534215	5534364	16 bar	6,00
125	5534202	5534216	5534365	16 bar	7,50
150	5534203	5534217	5534366	16 bar	10,30
200	5534204	5534218	5534367	10 bar	19,50
250	5534205	5534219	-	10 bar	25,50
300	5534206	5534221	-	10 bar	44,40
350	5534207	5534222	-	10 bar	56,10
400	5534208	5534223	-	10 bar	70,10
450	5534209	5534224	-	10 bar	100,00
500	5534211	5534225	-	10 bar	110,00

Kan leveres med EN 10204- 3.1 sertifikat/Can be delivered with EN 10204- 3.1 certificate.



Item	Standard
Design standard	EN 12334:2001
Test standard	EN 12266-1:2003
Flange standard	EN 1092-2 PN10 OR PN16
Working pressure	DN50-DN150 MAX 16bar DN200-DN500 MAX 10bar

50	54	165	29	Ø4.1	73
65	54	185	35	Ø8.3	85.7
80	54	200	41	Ø15.7	98.4
100	63.5	234	53	Ø2.8	123.8
125	66.7	270	67.5	Ø11.4	150.8
150	79.4	304	81	Ø99.9	177.8
200	98.4	367	102.5	Ø23.7	228.6
250	101.6	428	130	Ø30.9	282.6
300	130.2	497	155.5	Ø35	333.4
350	181	571.5	171.5	Ø39.6	369
400	162	631.8	196.9	Ø47.6	419.1
450	184.2	641.4	222.3	Ø50.7	469.9
500	215.9	698.5	247.7	Ø52.4	517.5
DN	H	ØF	R	ØD	ØD1

Num	Code Num	Name	Qty	Material	N/W	G/W
4	H800-10/16-03	800 Series Disc	2	C95800		
3		Rubbe	1	NBR		
2	H800-10/16-02	800 Series Frame	1	G66 40.3		
1	H800-10/16-01	800 Series Shell	1	G66 40.3		

Num	Code Num	Name	Qty	Material	N/W	G/W
11	H800-10/16-06	Washer-I	2	PTFE		
10	H800-10/16-06	Washer-II	2	PTFE		
9	H800-10/16-07	NPT Screw Plug	2	Carbon Steel		
8	GB/T78-2000	Flat Secrew	1	Carbon Steel		
7	GB/T78-2000	Taper Secrew	1	Carbon Steel		
6	H800-10/16-05	800 Series Shaft	1	316		
5	H800-10/16-04	800 Series Returning Spring	2	Mirrod(SA-501,3020A-500)		

DESIGN	JP	STANDARD	DRAWING MARK	WEIGHT	SCALE	DUAL PLATE CHECK VALVE
AUDIT						
CHECK		APPROVE			1:1	
TECHNICS		DATE				

H800-10/16-00

Skisse: ©Ahsell Norge AS - www.ahsell.no/Drawing: ©Ahsell Norge AS - www.ahsell.no

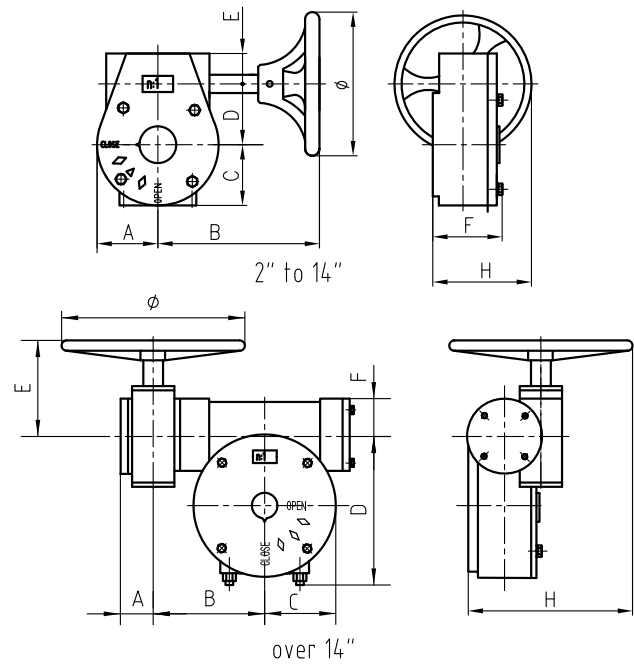
Marine gir for dreiespjeldventiler

Marine gear for butterfly valves

*
SIP

Materiale: Støpejern (GG-25)

Material: Marine Cast iron (GG-25)



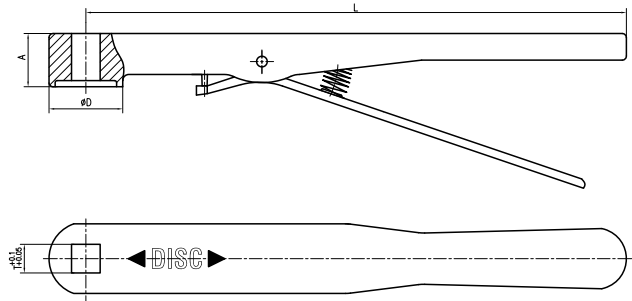
Dn	Vare nr. Part no.	M SQ	A mm	B mm	C mm	D mm	E mm	F mm	H mm	ø mm	Torque N x M	Vekt Weight Kg
40-80	5533991	11	53	112	54	45	28	72	113	150	150	5,10
100-125	5533992	14	53	112	54	45	28	72	113	150	150	6,10
150	5533993	17	53	112	54	45	28	72	113	150	150	8,80
200	5533994	17	77	171	76	66	34	84	194	300	500	12,80
250	5533995	22	77	171	76	66	34	84	194	300	500	16,60
300-350	5533996	27	81	224	81	77,5	39	85	189	300	1200	18,60
400	5533997	36	50	172	108	219	140	65	274	300	2500	31,40
450-500	5533998	36	50	172	108	219	140	65	274	300	2500	33,40
600	5533999	46	53	196	131	274	153	75	285	400	4000	50,80

Spak for dreiespjeldventiler
Lever for butterfly valves

*
SIP

Materiale: Støpejern (GG-25) og AISI 316.

Material: Cast iron (GG-25) and AISI 316.

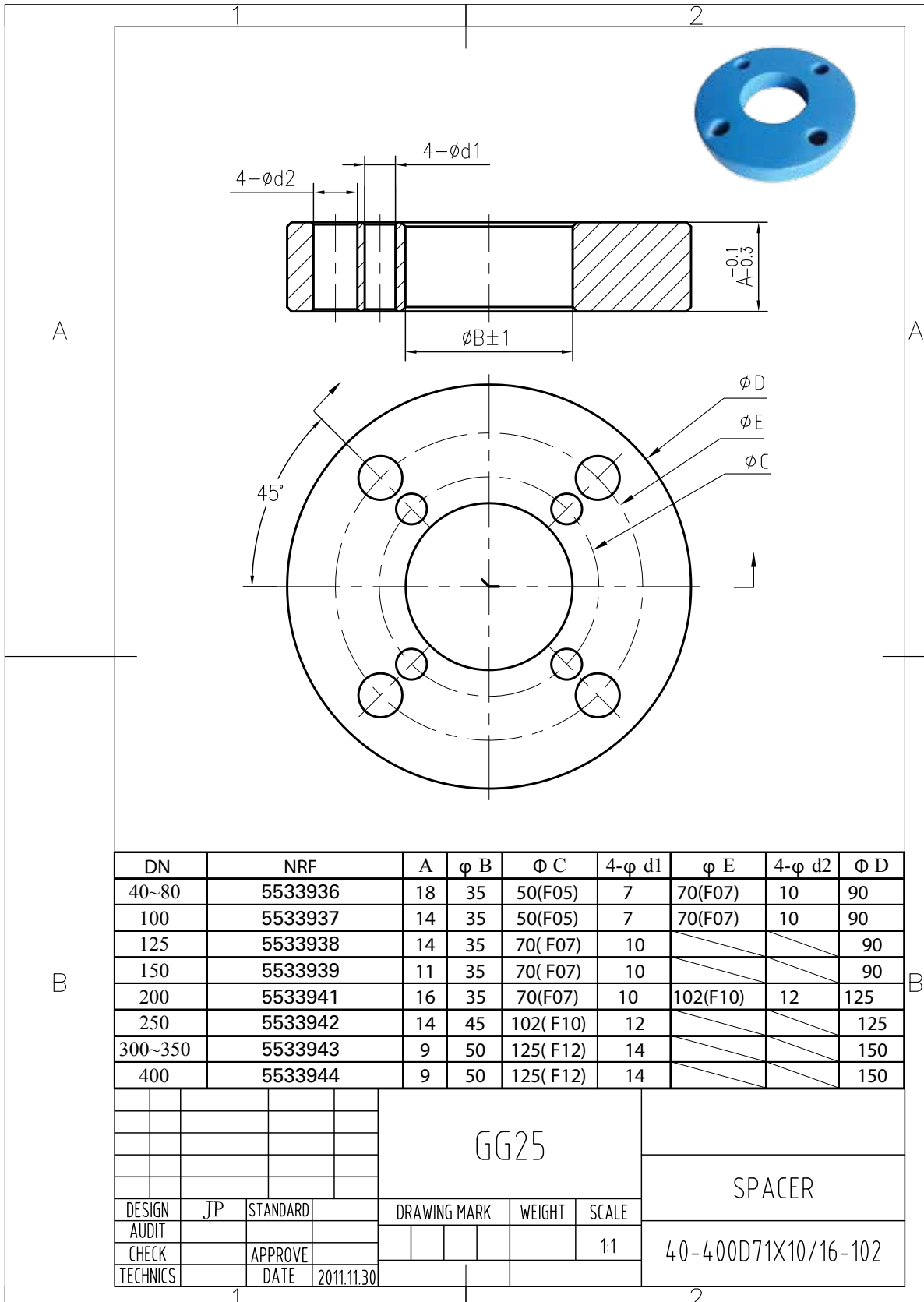


Dn	Vare nr. Part no. GG-25	Vare nr. Part no. AISI 316	T mm	A mm	ød mm	L mm	Vekt Weight Kg
40-80	5533982	5533986	11	26	36	264	0,80
100-125	5533983	5533987	14	26	36	264	0,80
150	5533984	5533988	17	26	36	264	0,80
200	5533985	5533989	17	31	62	364	0,80

Tegninger Spacer for aktuator

Drawings Spacer for actuator

*
Sip



Skisse: ©Ahsell Norge AS - www.ahsell.no/Drawing: ©Ahsell Norge AS - www.ahsell.no



Alle ventiler er tryktestet fra begge sider/ All valves are pressure tested from both sides

Operasjonsmoment (Nm)

Operating torque (Nm)

*

Sip - 04, 11, 13, 14, 17, 19

Size	PN 3 Nm	PN 5 Nm	PN 10 Nm	PN 16 Nm	PN 25 Nm
DN40	10	10	10	12	21
DN50	12	12	12	13	21
DN65	13	15	20	26	42
DN80	20	25	30	35	56
DN100	32	35	50	58	93
DN125	49	52	60	75	150
DN150	76	90	110	138	276
DN200	137	145	173	242	484
DN250	215	232	286	400	800
DN300	314	343	429	601	1202
DN350	401	434	550	-	-
DN400	499	565	755	-	-
DN450	653	742	1012	-	-
DN500	837	965	1350	-	-
DN600	1308	1494	2111	-	-

Sip - 15

Size	PN 10 Nm	PN 16 Nm
DN50	-	35
DN65	-	40
DN80	-	55
DN100	-	85
DN125	-	130
DN150	-	160
DN200	350	-
DN250	400	-
DN300	580	-

Ved påmontering av aktuator må det beregnes en sikkerhetsmargin på 50% /By mounting of actuator, please add 50% safety margin

Tabell for anbefalte bolter

Table for recommended bolts

*

(Diameter x Length)

Size	Wafer type connect with NS 2526 PN10 flanges	Wafer type connect with NS 2527 PN16 flanges	Lug type connect with NS 2526 PN10 flanges	Lug type connect with NS 2527 PN16 flanges	For mounting lever or gears
	Stud bolts		Hex bolts		Hex bolts
DN40	M16 x 120	M16 x 120	M16 x 30	M16 x 30	M8 x 25
DN50	M16 x 140	M16 x 140	M16 x 40	M16 x 40	M8 x 25
DN65	M16 x 140	M16 x 140	M16 x 40	M16 x 40	M8 x 25
DN80	M16 x 140	M16 x 140	M16 x 40	M16 x 40	M8 x 30
DN100	M16 x 150	M16 x 150	M16 x 45	M16 x 45	M8 x 30
DN125	M16 x 160	M16 x 160	M16 x 50	M16 x 50	M8 x 30
DN150	M20 x 170	M20 x 170	M20 x 50	M20 x 50	M8 x 30
DN200	M20 x 180	M20 x 180	M20 x 50	M20 x 50	M10 x 30
DN250	M20 x 190	M24 x 210	M20 x 55	M24 x 60	M10 x 30
DN300	M20 x 200	M24 x 220	M20 x 60	M24 x 65	M12 x 35
DN350	M20 x 210	M24 x 220	M20 x 65	M24 x 70	M12 x 35
DN400	M24 x 240	M27 x 250	M24 x 80	M27 x 80	M12 x 35
DN450	M24 x 250	M27 x 260	M24 x 80	M27 x 90	M16 x 40
DN500	M24 x 280	M30 x 300	M24 x 90	M30 x 100	M16 x 40
DN600	M27 x 300	M33 x 350	M27 x 100	M33 x 110	M20 x 50

Bolt torque (Guideline values in Nm)

Thread size	8.8	10.9	12.9
M5	5,7	8,1	9,7
M6	9,8	14	17
M8	24	33	40
M10	47	65	79
M12	81	114	136
M16	197	277	333
M20	385	541	649
M24	665	935	1120
M30	1310	1840	2210
M36	2280	3210	3850

Informasjon Lug / Wafer

Information Lug / Wafer

*

Lug / Wafer

Lug:

Kan sitte som endeventil i kortere perioder og på lavt trykk. For permanent bruk som endeventil anbefaler vi bruk av motflens.

Lug:

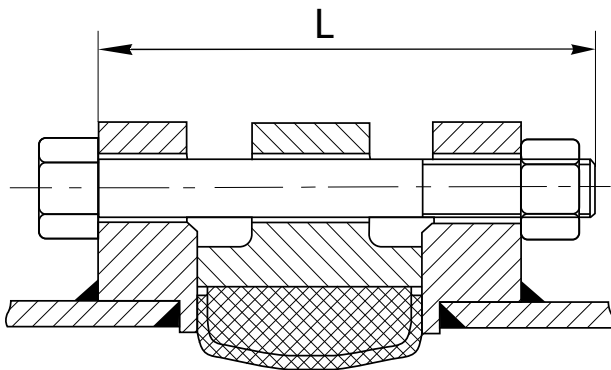
For dead end services for shorter periods and low pressure. For permanently use as dead end valve we recommend use of counter flange. Use short bolts without nuts.

Wafer:

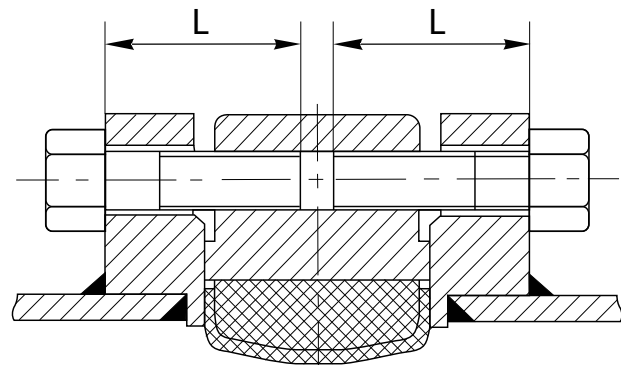
For innspenning, lange bolter med en mutter. Lengden er beregnet ut i fra 2 stk. flenser, en på hver side av ventilen.

Wafer:

To be mounted between flanges, can not be used for dead end services. Use longer bolts with one nut. The calculated length includes flanges on both sides of the valve.



Skisse: Wafer / Drawing: Wafer



Skisse: Lug / Drawing: Lug



Alta, El
Rurveien 9, 9515 Alta

Gjøvik
Kallerudlia 11, 2816 Gjøvik

Narvik
Skarvenesveien 6, 8514 Narvik

Arendal
Bedriftsveien 17, 4841 Arendal

Hamar
Stangeveien 111, 2321 Hamar

Oslo Brobekkveien
Brobekkveien 80, 0582 Oslo

Bergen Fabrikkgaten
Fabrikkgaten 3-5, 5059 Bergen

Harstad
Samasjøveien 26, 9404 Harstad

Oslo Bryn
Østensjøveien 9, 0661 Oslo

Bergen Fana
Apeltunveien 2, 5222 Nesttun

Haugesund
Rennesøygata 8, 5537 Haugesund

Oslo Skøyen
Hoffsveien 11, 0275 Oslo

Bergen Godvik PS
Godviksvingene 174, 5179 Godvik

Hønefoss
Industrigaten 4, 3515 Hønefoss

Porsgrunn
Hydrovegen 19, 3933 Porsgrunn

Bergen Åsane
Litleåsveien 41, 5132 Nyborg

Kirkenes
Havneveien 1, 9900 Kirkenes

Sortland Vesterålgata
Vesterålgata 136, 8400 Sortland

Billingsstad
Stasjonsveien 40, 1396 Billingsstad

Kløfta
Kongsvingerveien 37, 2040 Kløfta

Sortland Vestmarka
Verkstedveien 2, 8400 Sortland

Bodø Per Helgensensvei
Per Helgesensvei 99, 8013 Bodø

Kristiansand
Stadionveien 16, 4632 Kristiansand

Stavanger Forus PS
Gamle Forusveien 51, 4033 Stavanger

Bodø Pålsvai
Påls vei 1, 8008 Bodø

Kristiansund
Maskinveien 1, 6517 Kristiansund

Stavanger Åsen PS
Auglendsmyrå 6, 4016 Stavanger

Bryne, El
Hognestadveien 86, 4340 Bryne

Leikanger, salgskontor
Sognefjordvegen 40, 6863 Leikanger

Steinkjer
Jektsmedgata 5, 7725 Steinkjer

Drammen
Nøstestranda, 3400 Lier

Liertoppen, Kulde
Gjellebekkstubben 9-11, 3420 Lierskogen

Stord
Ringveien 7 Heiane, 5412 Stord

Fagernes
Lagemarkene, 2920 Leira

Lillestrøm
Hvamveien 1, 2013 Skjetten

Tromsø Ringveien PS
Ringveien 15, 9018 Tromsø

Finnsnes
Strandveien 112, 9300 Finnsnes

Lyngdal
Industriveien 3, 4580 Lyngdal

Trondheim Tempeveien PS
Tempeveien 15, 7037 Trondheim

Flekkefjord, El
Sundegaten 5, 4400 Flekkefjord

Mo i Rana
Søderlundmyra 26, 8622 Mo i Rana

Tønsberg
Solkilen 2, 3117 Tønsberg

Florø
Hamregata 17, 6900 Florø

Molde
Fannestrandveien 84 A, 6416 Molde

Ulsteinvik Holsekerv.
Holsekerveien 81, 6065 Ulsteinvik

Fredrikstad Rolvsøyveien
Rolvsøyveien 203, 1617 Fredrikstad

Moss
Kvaenveien 4, 1529 Moss

Voss
Brynaskogen 6, 5700 Voss

Førde
Fjærevegen 4, 6800 Førde

Måløy
Myrane Industriområde, 6718 Deknepollen

Ålesund
Breivika, 6018 Ålesund