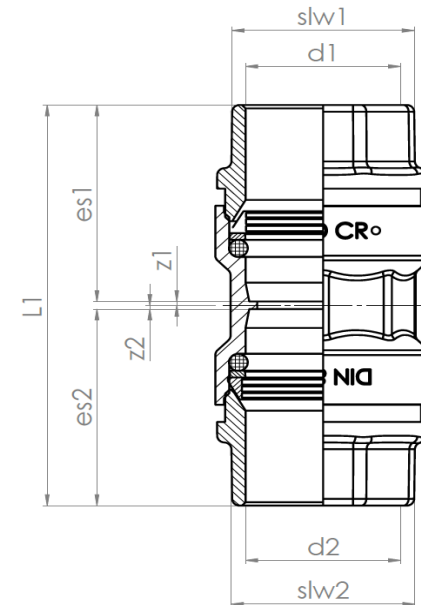
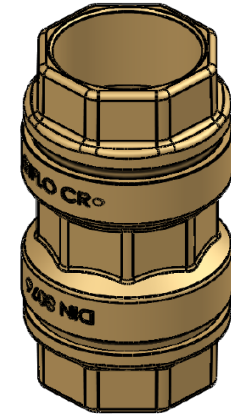


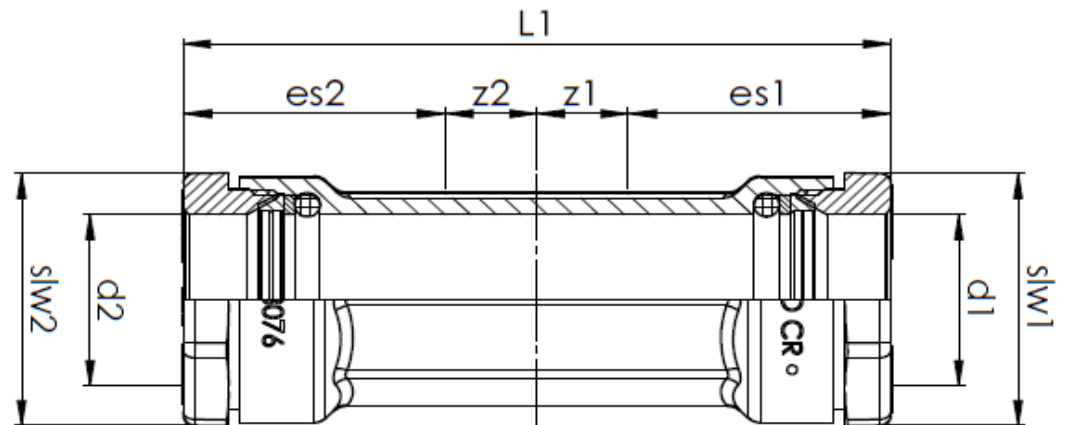
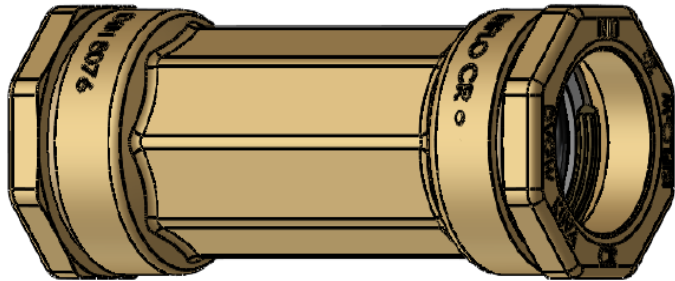
Type 100

| RWG nr. | NRF | Dimension | Description | d1 | d2 | L1 | slw1 | slw2 | es1 | es2 | z1 | z2 |
|---------|---------|-------------|----------------------|----|---------|-----|------|------|-----|-----|-----|-----|
| 6211001 | 2561022 | 16mm | Union | 16 | 16 | 57 | 29 | 29 | 30 | 30 | 1 | 1 |
| 6211002 | 2561024 | 20mm | Union | 20 | 20 | 60 | 34 | 34 | 30 | 30 | 1 | 1 |
| 6217232 | 2564525 | 21mm | Union gammel std. | 21 | 21 | 59 | 34 | 34 | 31 | 31 | 1 | 1 |
| 6212522 | 2562862 | 22x1" | Union Rep. Kobl. | 22 | Ø1" | 59 | 38 | 39 | 32 | 32 | 1 | 1 |
| 6214003 | 2561029 | 25mm | Union | 25 | 25 | 60 | 39 | 39 | 31 | 31 | 1 | 1 |
| 6214123 | 2564296 | 25x15mmCU | Union Rep. Kobl. Cu | 25 | 15 | 60 | 39 | 29 | 31 | 30 | 1 | 1 |
| 6217201 | 2561027 | 25x21mm | Union ny-gammel std. | 25 | 21 | 100 | 39 | 34 | 31 | 30 | 1 | 1 |
| 6217203 | 2561067 | 25x27mm | Union ny-gammel std. | 25 | 27 | 63 | 39 | 41 | 31 | 33 | 1 | 1 |
| 6217233 | 2564532 | 27mm | Union gammel std. | 27 | 27 | 65 | 41 | 41 | 33 | 33 | 1 | 1 |
| 6212528 | 2562864 | 28x1" | Union Rep. Kobl. | 28 | Ø1" | 67 | 45 | 39 | 35 | 33 | 1 | 1 |
| 6214004 | 2561034 | 32mm | Union | 32 | 32 | 70 | 49 | 49 | 36 | 36 | 1 | 1 |
| 6217204 | 2561071 | 32x34mm | Union ny-gammel std. | 32 | 34 | 70 | 49 | 49 | 36 | 35 | 1 | 1 |
| 6217234 | 2564535 | 34mm | Union gammel std. | 34 | 34 | 70 | 49 | 49 | 35 | 35 | 1 | 1 |
| 6216005 | 2562866 | 35x1 1/4" | Union Rep. Kobl. | 35 | Ø1 1/4" | 70 | 49 | 50 | 36 | 36 | 1 | 1 |
| 6213632 | 2561021 | 36x32mm | Union ny-gammel std. | 36 | 32 | 72 | 49 | 49 | 36 | 36 | 1 | 1 |
| 6214028 | 2561082 | 40x28mmCU | Union Rep. Kobl. Cu | 40 | 28 | 70 | 49 | 45 | 50 | 35 | 1 | 1 |
| 6214005 | 2561039 | 40mm | Union | 40 | 40 | 115 | 49 | 49 | 50 | 50 | 1 | 1 |
| 6217205 | 2561074 | 40x42mm | Union ny-gammel std. | 40 | 42 | 70 | 49 | 60 | 50 | 41 | 1 | 1 |
| 6216006 | 2562868 | 42x1 1/2" | Union Rep. Kobl. Cu | 42 | Ø1 1/2" | 90 | 60 | 60 | 41 | 41 | 1 | 1 |
| 6216008 | 2562873 | 42x1 3/4" | Union Rep. Kobl. Cu | 42 | Ø1 3/4" | 85 | 60 | 65 | 41 | 44 | 1 | 1 |
| 6217235 | 2564541 | 42mm | Union gammel std. | 42 | 42 | 100 | 60 | 60 | 41 | 41 | 1 | 1 |
| 6217236 | 2564544 | 49mm | Union gammel std. | 49 | 49 | 90 | 69 | 69 | 43 | 43 | 1 | 1 |
| 6217206 | 2561077 | 50x49mm | Union ny-gammel std. | 50 | 49 | 105 | 60 | 69 | 52 | 43 | 1 | 1 |
| 6211006 | 2561044 | 50mm | Union | 50 | 50 | 120 | 60 | 60 | 52 | 52 | 1 | 1 |
| 6216009 | 2562875 | 54x2" | Union Rep. Kobl. Cu | 54 | Ø2" | 110 | 75 | 60 | 60 | 60 | 1 | 1 |
| 6217237 | 2564557 | 60mm | Union gammel std. | 60 | 60 | 95 | 83 | 83 | 47 | 47 | 2.5 | 2.5 |
| 6217208 | 2561161 | 63mm x 60mm | Union ny-gammel std. | 63 | 60 | 120 | 76 | 83 | 70 | 47 | 2.5 | 2.5 |
| 6211007 | 2561162 | 63mm | Union | 63 | 63 | 150 | 76 | 76 | 70 | 70 | 2.5 | 2.5 |



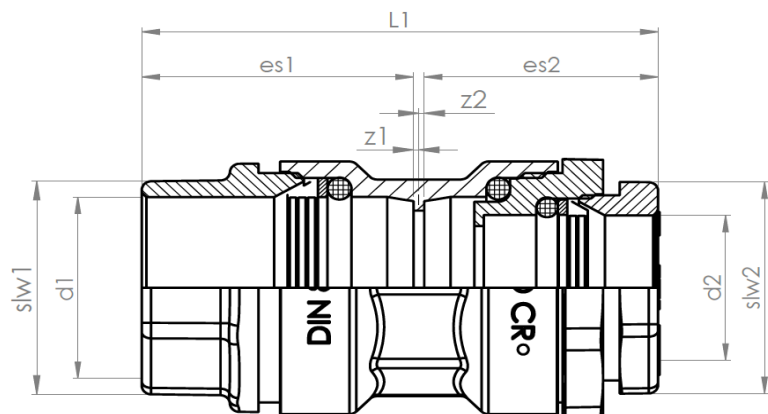
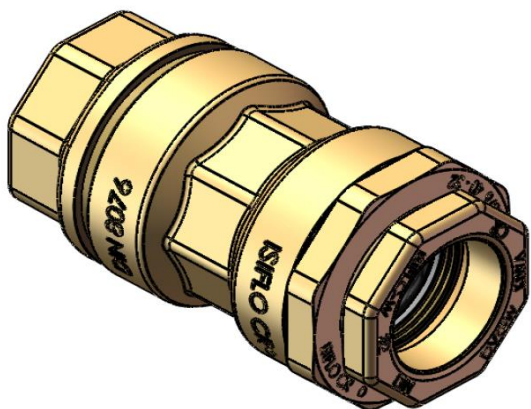
Type 101

| RWG nr. | NRF | Dimension | Description | d1 | d2 | L1 | slw1 | slw2 | es1 | es2 | z1 | z2 | Max distance between pipe ends |
|---------|---------|-----------|---------------------------|----|----|-----|------|------|--------------------|--------------------|---------|---------|--------------------------------|
| 6211012 | 2561017 | 20mm | Rep. Muffe 20mm x 20mm | 20 | 20 | 122 | 34 | 34 | min. 31 max. 56 | min. 31 max. 56 | min. 5 | min. 5 | 60 |
| 6211013 | 2561129 | 25mm | Rep. Muffe 25mm x 25mm | 25 | 25 | 122 | 39 | 39 | min. 32 max. 56 | min. 32 max. 56 | min. 5 | min. 5 | 58 |
| 6211014 | 2561134 | 32mm | Rep. Muffe 32mm x 32mm | 32 | 32 | 124 | 49 | 49 | min. 36 max. 57 | min. 36 max. 57 | min. 5 | min. 5 | 52 |
| 6211015 | 2561139 | 40mm | Rep. Muffe 40mm x 40mm | 40 | 40 | 170 | 49 | 49 | min 51. max. 77 | min 51. max. 77 | min. 8 | min. 8 | 68 |
| 6211016 | 2561144 | 50mm | Rep. Muffe 50mm x 50mm | 50 | 50 | 170 | 60 | 60 | min 52. max. 77 | min 52. max. 77 | min. 8 | min. 8 | 66 |
| 6211017 | 2561163 | 63mm | Rep. Muffe 63mm x 63mm | 63 | 63 | 178 | 76 | 76 | min. 72 max. 79 | min. 72 max. 79 | min. 10 | min. 10 | 34 |



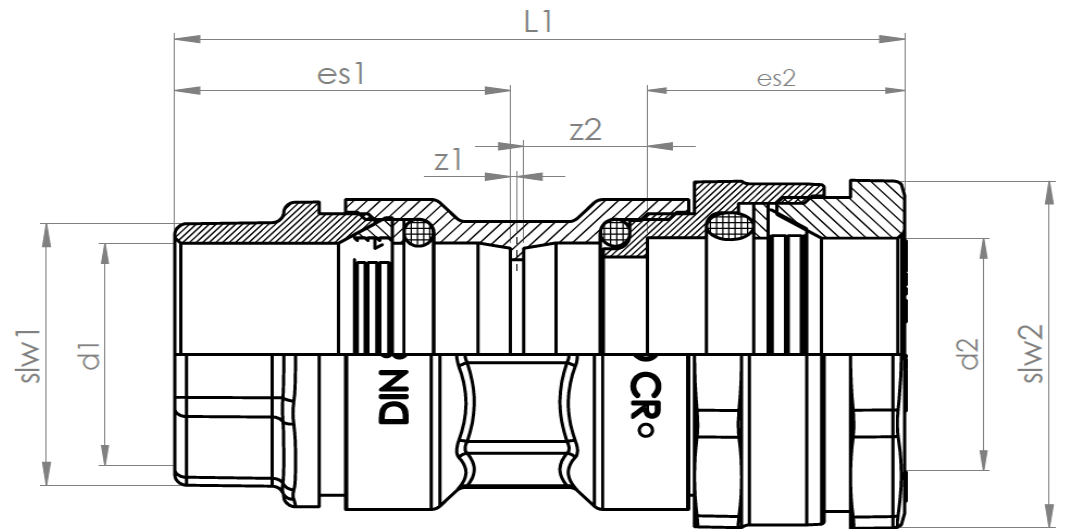
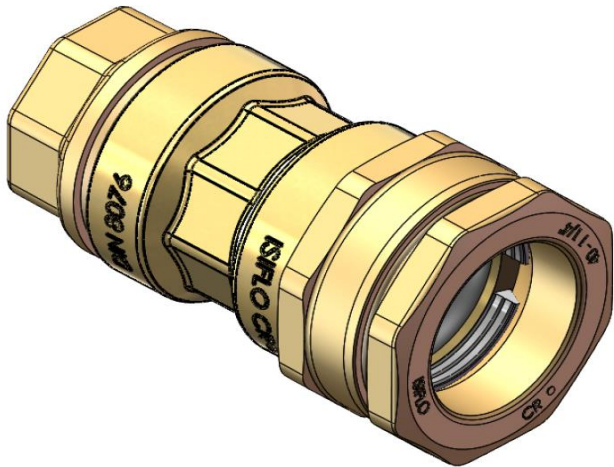
Type 102

| RWG nr. | NRF | Dimension | Description | d1 | d2 | L1 | slw1 | slw2 | es1 | es2 |
|---------|---------|-----------|------------------------|----|---------|-----|------|------|-----|-----|
| 6211020 | NA | 25x16mm | Union redus | 25 | 16 | 74 | 39 | 29 | 31 | 30 |
| 6211021 | 2564266 | 25x20mm | Union redus | 25 | 20 | 65 | 39 | 34 | 31 | 30 |
| 6211022 | NA | 32x20mm | Union redus | 32 | 20 | 83 | 49 | 34 | 36 | 30 |
| 6211023 | 2564267 | 32x25mm | Union redus | 32 | 25 | 70 | 49 | 39 | 36 | 31 |
| 6211024 | 2564268 | 40x25mm | Union redus | 40 | 25 | 108 | 49 | 39 | 50 | 31 |
| 6211025 | NA | 40x32mm | Union redus | 40 | 32 | 109 | 49 | 49 | 50 | 36 |
| 6216008 | 2562873 | 42x1 3/4" | Rep. Kobl. Cu | 42 | Ø1 3/4" | 85 | 60 | 65 | 41 | 44 |
| 6211026 | NA | 50x32mm | Union redus | 50 | 32 | 113 | 60 | 49 | 52 | 36 |
| 6211027 | 2564269 | 50x40mm | Union redus | 50 | 40 | 132 | 60 | 49 | 52 | 50 |
| 6216010 | NA | 50x45mm | Rep. Kobl. Cu | 50 | 45 | 102 | 60 | 65 | 52 | 43 |
| 6217206 | 2561077 | 50x49mm | Union ny-gammel Isiflo | 50 | 49 | 105 | 60 | 69 | 52 | 43 |
| 6216009 | 2562875 | 54x2" | Rep. Kobl. Cu | 54 | Ø2" | 110 | 75 | 60 | 44 | 44 |
| 6211028 | 2564271 | 63x40mm | Union redus | 63 | 40 | 174 | 76 | 49 | 70 | 50 |
| 6211029 | NA | 63x50mm | Union redus | 63 | 50 | 174 | 76 | 60 | 70 | 52 |
| 6217208 | 2561161 | 63x60mm | Union ny-gammel Isiflo | 63 | 60 | 120 | 76 | 83 | 70 | 47 |



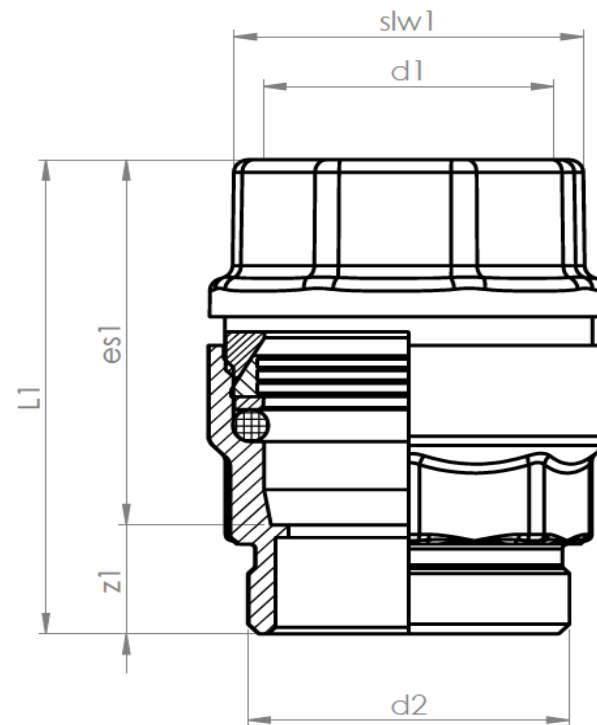
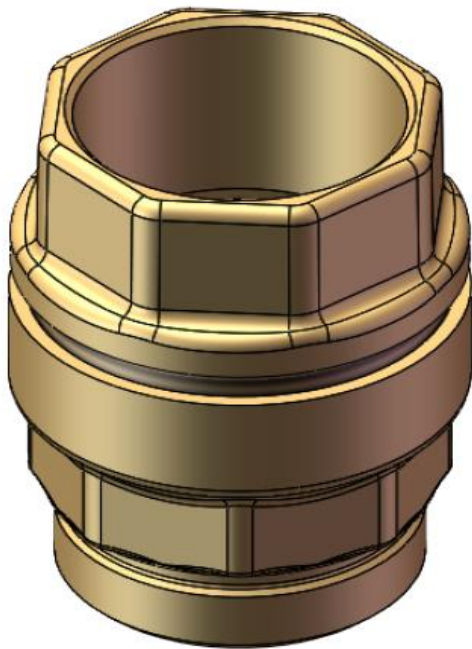
Type 103

| RWG nr. | NRF | Dimension | Description | d1 | d2 | L1 | slw1 | slw2 | z1 | z2 | es1 | es2 |
|---------|-----|-----------|---------------------|----|---------|-----|------|------|------|----|-----|-----|
| 6211033 | NA | 25x3/4" | Union Metric x inch | 25 | ∅3/4" | 91 | 39 | 47 | 0.75 | 16 | 31 | 41 |
| 6211034 | NA | 32x1" | Union Metric x inch | 32 | ∅1" | 99 | 49 | 39 | 1 | 20 | 36 | 41 |
| 6211035 | NA | 40x1 1/4" | Union Metric x inch | 40 | ∅1 1/4" | 125 | 49 | 50 | 1 | 22 | 50 | 44 |
| 6211036 | NA | 50x1 1/2" | Union Metric x inch | 50 | ∅1 1/2" | 130 | 60 | 60 | 1 | 23 | 52 | 44 |
| 6211037 | NA | 63x2" | Union Metric x inch | 63 | ∅2" | 153 | 76 | 60 | 1 | 31 | 62 | 49 |



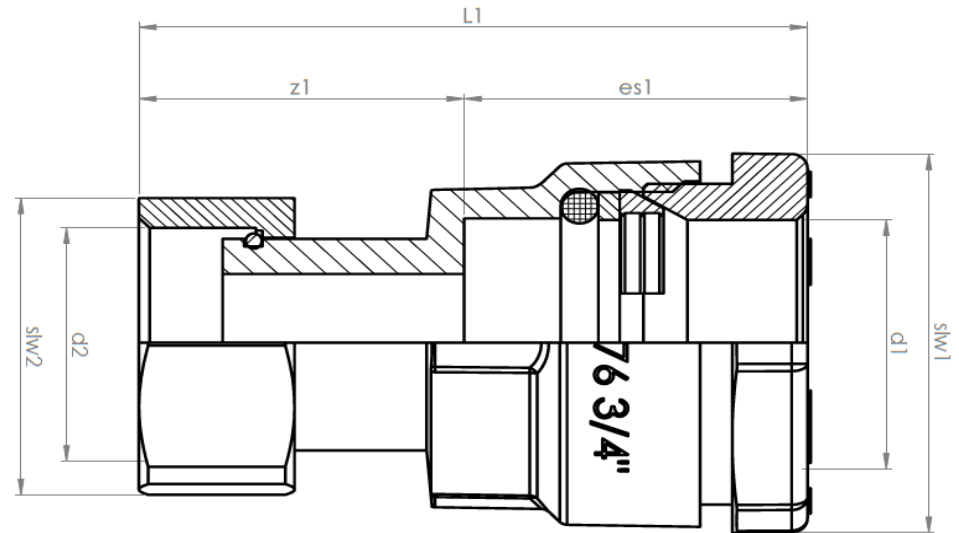
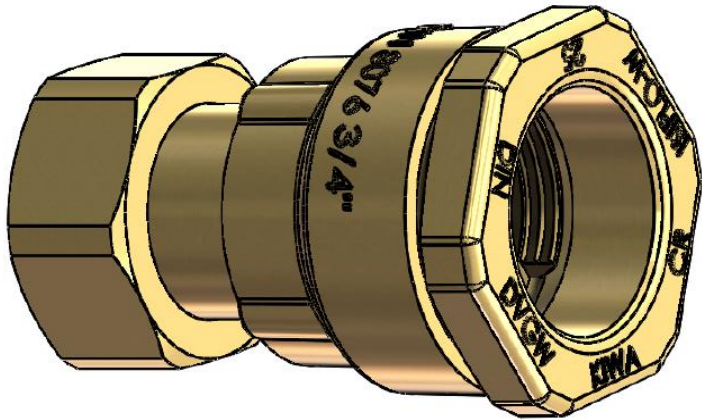
Type 106

| RWG nr. | NRF | Dimension | d1 | d2 | L1 | slw1 | es1 | z1 |
|---------|-----|-----------|----|--------|----|------|-----|----|
| 6211063 | NA | 32x1 1/4" | 32 | 1 1/4" | 51 | 49 | 36 | 15 |
| 6211064 | NA | 32x1 1/2" | 32 | 1 1/2" | 51 | 49 | 36 | 15 |
| 6211065 | NA | 40x1 1/4" | 40 | 1 1/4" | 72 | 49 | 50 | 22 |
| 6211066 | NA | 50x1 1/2" | 50 | 1 1/2" | 78 | 60 | 52 | 26 |



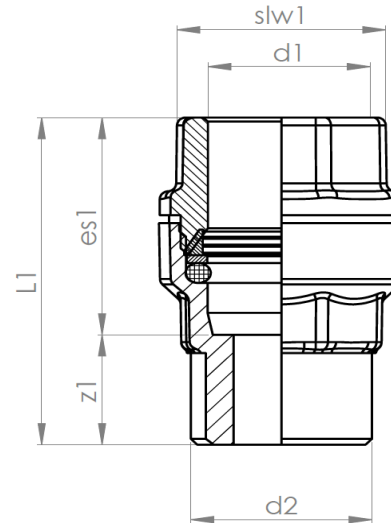
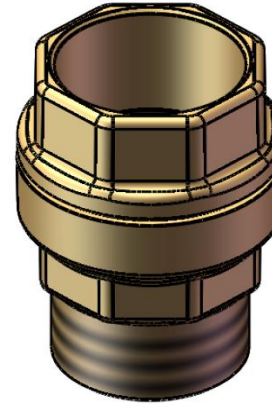
Type 109

| RWG nr. | NRF | Dimension | Description | d1 | d2 | L1 | slw1 | slw2 | es1 | z1 |
|---------|---------|-----------|-------------------------|----|------|----|------|------|-----|----|
| 6211093 | NA | 25x3/4" | Coupl. w/ swivel nut | 25 | 3/4" | 62 | 39 | 30 | 31 | 31 |
| 6218302 | 2564308 | 32x3/4" | Coupl. w/ swivel nut | 32 | 3/4" | 66 | 49 | 30 | 36 | 30 |



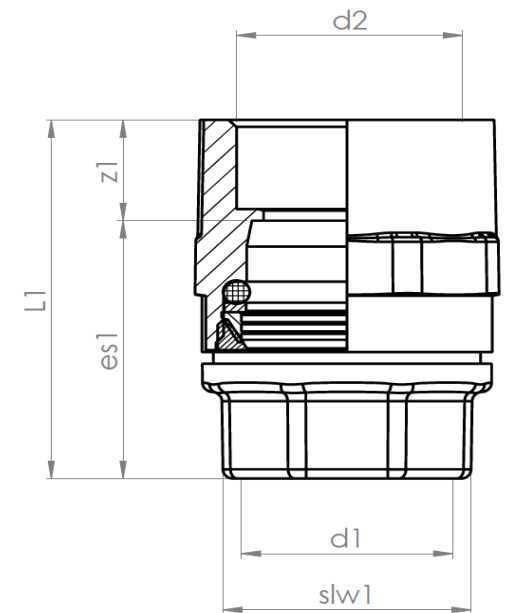
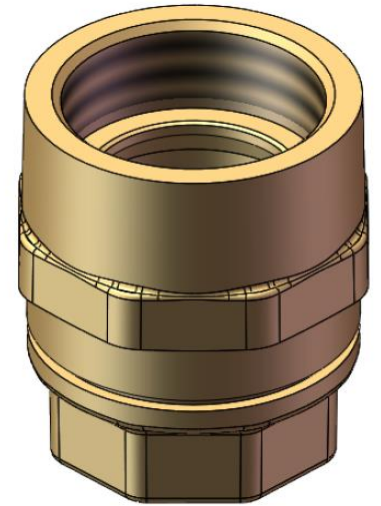
Type 105 /110 /112

| RWG nr. | NRF | Dimension | Description | d1 | d2 | L1 | slw1 | z1 | es1 |
|---------|---------|---------------|----------------------------|----|--------|-----|------|----|-----|
| 6211051 | 2561222 | 16mmx1/2" | Tippunion m/utv. rørgjenge | 16 | 1/2" | 50 | 29 | 20 | 30 |
| 6214102 | 2561424 | 20mmx1/2" | Tippunion m/utv. rørgjenge | 20 | 1/2" | 55 | 34 | 25 | 30 |
| 6211052 | 2561224 | 20mmx3/4" | Tippunion m/utv. rørgjenge | 20 | 3/4" | 55 | 34 | 25 | 30 |
| 6217212 | 2564625 | 21mmx1/2" | Tippunion m/utv. rørgjenge | 21 | 1/2" | 55 | 34 | 24 | 31 |
| 6212234 | 2561426 | 22mmCUx3/4" | Tippunion m/utv. rørgjenge | 22 | 3/4" | 55 | 38 | 23 | 32 |
| 6211123 | 2561529 | 25mmx1/2" | Tippunion m/utv. rørgjenge | 25 | 1/2" | 55 | 39 | 24 | 31 |
| 6214103 | 2561429 | 25mmx3/4" | Tippunion m/utv. rørgjenge | 25 | 3/4" | 55 | 39 | 24 | 31 |
| 6211053 | 2561229 | 25mmx1" | Tippunion m/utv. rørgjenge | 25 | 1" | 55 | 39 | 24 | 31 |
| 6217213 | 2564613 | 27mmx3/4" | Tippunion m/utv. rørgjenge | 27 | 3/4" | 55 | 41 | 22 | 33 |
| 6211124 | 2561534 | 32mmx3/4" | Tippunion m/utv. rørgjenge | 32 | 3/4" | 60 | 49 | 24 | 36 |
| 6214104 | 2561434 | 32mmx1" | Tippunion m/utv. rørgjenge | 32 | 1" | 60 | 49 | 24 | 36 |
| 6211054 | 2561234 | 32mmx1 1/4" | Tippunion m/utv. rørgjenge | 32 | 1.1/4" | 60 | 49 | 24 | 36 |
| 6218018 | 2561028 | 32mmx1 1/2" | Tippunion m/utv. rørgjenge | 32 | 1.1/2" | 60 | 49 | 24 | 36 |
| 6217214 | 2564635 | 34mmx1" | Tippunion m/utv. rørgjenge | 34 | 1" | 65 | 49 | 30 | 35 |
| 6211125 | 2561539 | 40mmx1" | Tippunion m/utv. rørgjenge | 40 | 1" | 80 | 49 | 30 | 50 |
| 6214105 | 2561439 | 40mmx1 1/4" | Tippunion m/utv. rørgjenge | 40 | 1.1/4" | 85 | 49 | 35 | 50 |
| 6211055 | 2561239 | 40mmx1 1/2" | Tippunion m/utv. rørgjenge | 40 | 1.1/2" | 85 | 49 | 35 | 50 |
| 6217215 | 2564641 | 42mmx1 1/4" | Tippunion m/utv. rørgjenge | 42 | 1.1/4" | 70 | 60 | 29 | 41 |
| 6217216 | 2564644 | 49mmx1 1/2" | Tippunion m/utv. rørgjenge | 49 | 1.1/2" | 70 | 69 | 27 | 43 |
| 6211130 | 2561019 | 50mmx1" | Tippunion m/utv. rørgjenge | 50 | 1" | 85 | 60 | 33 | 52 |
| 6211128 | 2561544 | 50mmx1 1/4" | Tippunion m/utv. rørgjenge | 50 | 1.1/4" | 85 | 60 | 33 | 52 |
| 6211106 | 2561444 | 50mmx1 1/2" | Tippunion m/utv. rørgjenge | 50 | 1.1/2" | 85 | 60 | 33 | 52 |
| 6211056 | 2561244 | 50mmx2" | Tippunion m/utv. rørgjenge | 50 | 2" | 92 | 60 | 40 | 52 |
| 6217217 | 2564657 | 60mmx2" | Tippunion m/utv. rørgjenge | 60 | 2" | 80 | 83 | 33 | 47 |
| 6211129 | 2561018 | 63mmx1 1/4" | Tippunion m/utv. rørgjenge | 63 | 1.1/4" | 115 | 76 | 45 | 70 |
| 6211127 | 2561165 | 63mmx1 1/2" | Tippunion m/utv. rørgjenge | 63 | 1.1/2" | 115 | 76 | 45 | 70 |
| 6211107 | 2561164 | 63mm x 2" | Tippunion m/utv. rørgjenge | 63 | 2" | 115 | 76 | 45 | 70 |
| 6212101 | 2561459 | 75mmx2 1/2x2" | Tippunion m/utv. rørgjenge | 75 | 2" | 115 | 110 | 37 | 78 |
| 6212102 | 2561464 | 75mmx3x2 1/2" | Tippunion m/utv. rørgjenge | 75 | 2.1/2" | 115 | 110 | 37 | 78 |
| 6212103 | 2561469 | 90mmx3x2 1/2" | Tippunion m/utv. rørgjenge | 90 | 2.1/2" | 115 | 125 | 36 | 79 |



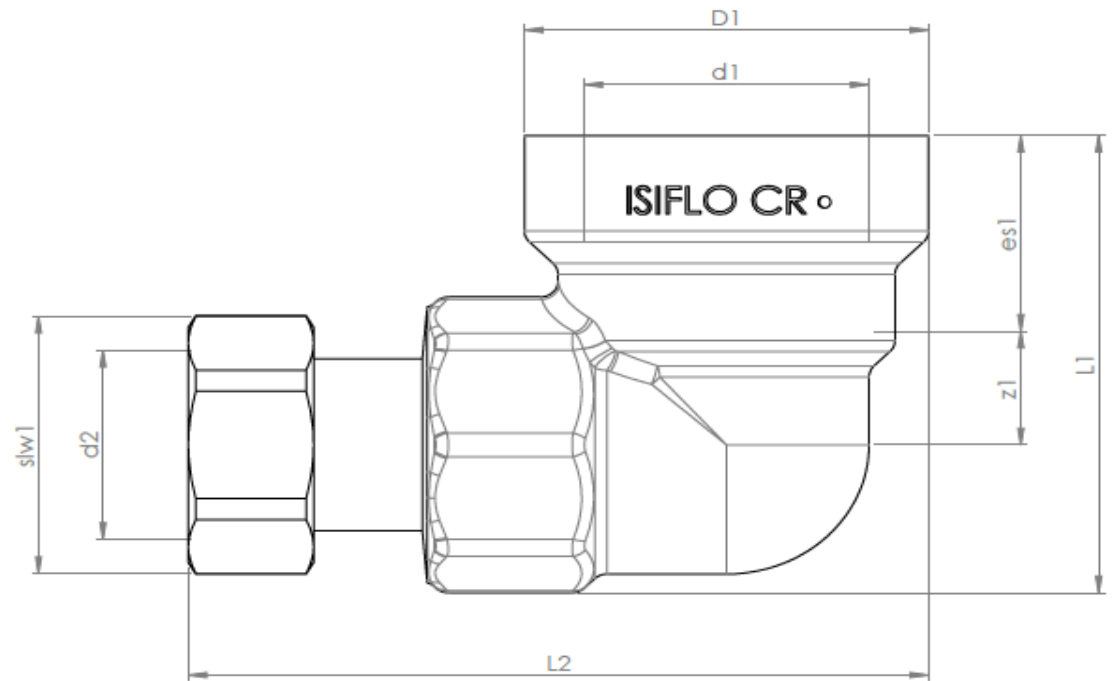
Type 115 / 116

| RWG nr. | NRF | Dimension | Description | d1 | d2 | L1 | slw1 | es1 | z1 |
|---------|---------|-------------|-------------------------|----|--------|-----|------|-----|----|
| 6211151 | 2561622 | 16mmx1/2" | Union m/innv. rørgjenge | 16 | 1/2" | 45 | 29 | 30 | 15 |
| 6214162 | 2561724 | 20mmx1/2" | Union m/innv. rørgjenge | 20 | 1/2" | 50 | 34 | 30 | 20 |
| 6211152 | 2561624 | 20mmx3/4" | Union m/innv. rørgjenge | 20 | 3/4" | 50 | 34 | 30 | 20 |
| 6218052 | 2561726 | 25mmx1/2" | Union m/innv. rørgjenge | 25 | 1/2" | 50 | 39 | 31 | 19 |
| 6214163 | 2561729 | 25mmx3/4" | Union m/innv. rørgjenge | 25 | 3/4" | 50 | 39 | 31 | 19 |
| 6211153 | 2561629 | 25mmx1" | Union m/innv. rørgjenge | 25 | 1" | 50 | 39 | 31 | 19 |
| 6217223 | 2564732 | 27mmx3/4" | Union m/innv. rørgjenge | 27 | 3/4" | 50 | 41 | 33 | 17 |
| 6211161 | 2561734 | 32mmx3/4" | Union m/innv. rørgjenge | 32 | 3/4" | 55 | 49 | 36 | 19 |
| 6214164 | 2561739 | 32mmx1" | Union m/innv. rørgjenge | 32 | 1" | 60 | 49 | 36 | 24 |
| 6211154 | 2561634 | 32mmx1 1/4" | Union m/innv. rørgjenge | 32 | 1 1/4" | 60 | 49 | 36 | 24 |
| 6217224 | 2564735 | 34mx1" | Union m/innv. rørgjenge | 34 | 1" | 55 | 49 | 35 | 20 |
| 6211168 | 2561744 | 40mmx1" | Union m/innv. rørgjenge | 40 | 1" | 75 | 49 | 50 | 25 |
| 6214165 | 2561749 | 40mmx1 1/4" | Union m/innv. rørgjenge | 40 | 1 1/4" | 80 | 49 | 50 | 30 |
| 6211155 | 2561639 | 40mmx1 1/2" | Union m/innv. rørgjenge | 40 | 1 1/2" | 80 | 49 | 50 | 30 |
| 6217225 | 2564741 | 42mmx1 1/4" | Union m/innv. rørgjenge | 42 | 1 1/4" | 60 | 60 | 41 | 19 |
| 6217226 | 2564744 | 49mmx1 1/2" | Union m/innv. rørgjenge | 49 | 1 1/2" | 65 | 69 | 43 | 22 |
| 6211169 | 2561754 | 50mmx1 1/4" | Union m/innv. rørgjenge | 50 | 1 1/2" | 80 | 60 | 52 | 28 |
| 6211166 | 2561759 | 50mmx1 1/2" | Union m/innv. rørgjenge | 50 | 1 1/2" | 85 | 60 | 52 | 33 |
| 6211156 | 2561644 | 50mmx2" | Union m/innv. rørgjenge | 50 | 2" | 90 | 60 | 52 | 38 |
| 6217227 | 2564757 | 60mmx2" | Union m/innv. rørgjenge | 60 | 2" | 105 | 83 | 47 | 58 |
| 6211167 | 2561166 | 63mmx2" | Union m/innv. rørgjenge | 63 | 2" | 115 | 76 | 70 | 45 |



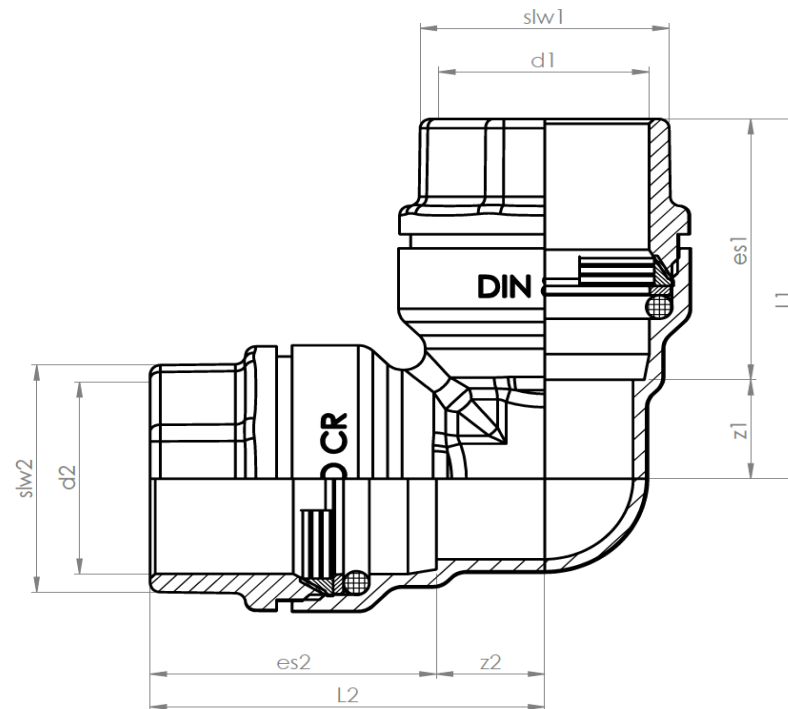
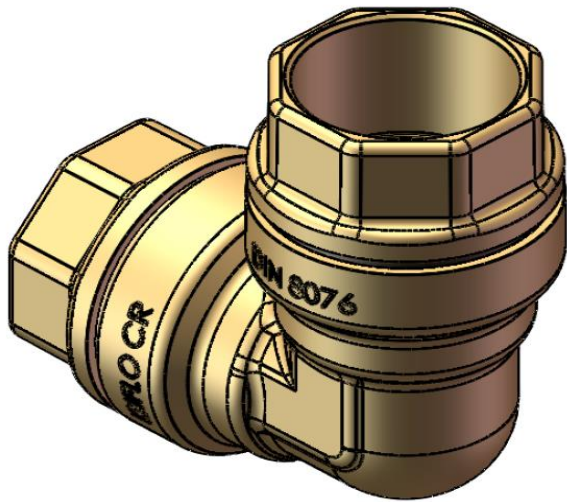
Type 119

| RWG nr. | NRF | Dimension | Description | d1 | D1 | d2 | slw1 | L1 | L2 | es1 | z1 |
|---------|---------|-----------|------------------------|----|----|------|------|----|----|-----|----|
| 6218303 | 2561829 | 25x3/4" | 90° elb. w/ swivel nut | 25 | 38 | 3/4" | 30 | 50 | 66 | 22 | 11 |
| 6218304 | 2564309 | 32x3/4" | 90° elb. w/ swivel nut | 32 | 47 | 3/4" | 30 | 58 | 85 | 25 | 14 |



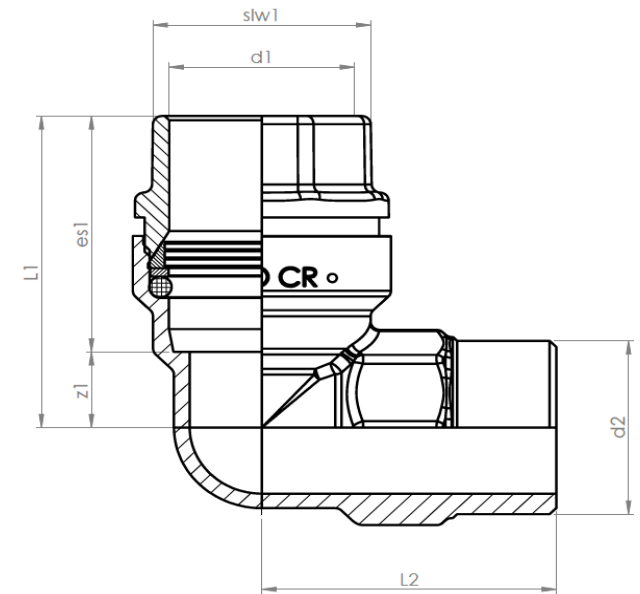
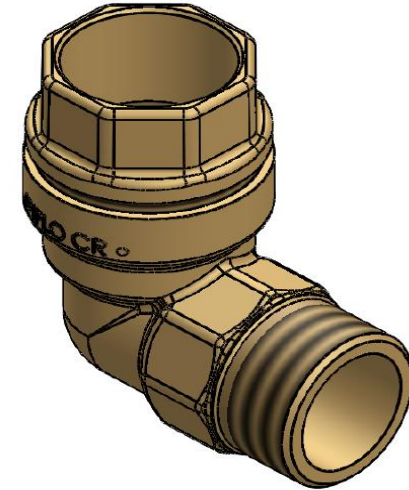
Type 120

| RWG nr. | NRF | Dimension | Description | d1 | d2 | L1 | L2 | slw1 | slw2 | es1 | es2 | z1 | z2 |
|---------|---------|-----------|-----------------|----|----|-----|-----|------|------|-----|-----|----|----|
| 6211202 | 2561924 | 20mm | Albue-union 90° | 20 | 20 | 50 | 50 | 34 | 34 | 30 | 30 | 20 | 20 |
| 6211203 | 2561929 | 25mm | Albue-union 90° | 25 | 25 | 50 | 50 | 39 | 39 | 31 | 31 | 19 | 19 |
| 6211204 | 2561934 | 32mm | Albue-union 90° | 32 | 32 | 60 | 60 | 49 | 49 | 36 | 36 | 24 | 24 |
| 6211205 | 2561939 | 40mm | Albue-union 90° | 40 | 40 | 85 | 85 | 49 | 49 | 50 | 50 | 35 | 35 |
| 6214029 | 2561083 | 40x28mmCU | Albue-union 90° | 40 | 28 | 85 | 65 | 49 | 45 | 50 | 35 | 35 | 30 |
| 6211206 | 2561944 | 50mm | Albue-union 90° | 50 | 50 | 95 | 95 | 60 | 60 | 52 | 52 | 43 | 43 |
| 6211207 | 2561167 | 63mm | Albue-union 90° | 63 | 63 | 115 | 115 | 76 | 76 | 70 | 70 | 45 | 45 |



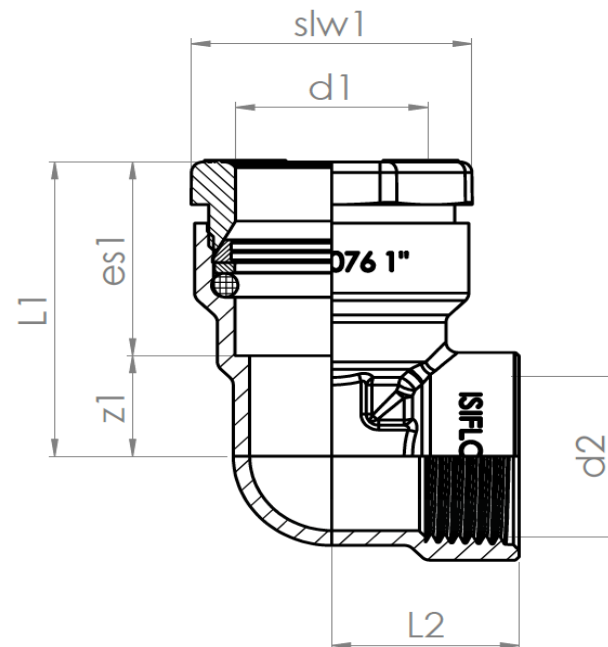
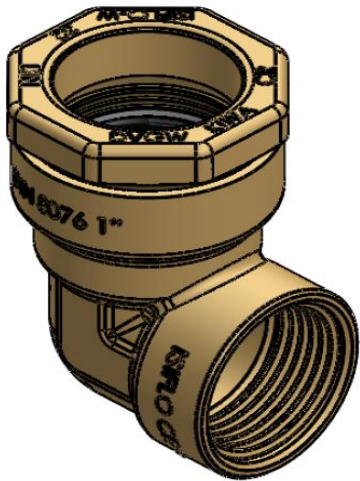
Type 121 / 124

| RWG nr. | NRF | Dimension | Description | d1 | d2 | L1 | L2 | slw1 | es1 | z1 |
|---------|---------|-------------|------------------------|----|--------|-----|----|------|-----|----|
| 6210212 | 2562024 | 20mmx1/2" | Albue m/utv. rørgjenge | 20 | 1/2" | 45 | 34 | 34 | 30 | 15 |
| 6211212 | 2561025 | 20mmx3/4" | Albue m/utv. rørgjenge | 20 | 3/4" | 45 | 33 | 34 | 30 | 15 |
| 6211243 | 2562329 | 25mmx1/2" | Albue m/utv. rørgjenge | 25 | 1/2" | 50 | 38 | 39 | 31 | 19 |
| 6214613 | 2562029 | 25mmx3/4" | Albue m/utv. rørgjenge | 25 | 3/4" | 50 | 39 | 39 | 31 | 19 |
| 6211213 | 2561026 | 25mmx1" | Albue m/utv. rørgjenge | 25 | 1" | 50 | 52 | 39 | 31 | 19 |
| 6211244 | 2562334 | 32mmx3/4" | Albue m/utv. rørgjenge | 32 | 3/4" | 50 | 43 | 49 | 36 | 14 |
| 6214614 | 2562034 | 32mmx1" | Albue m/utv. rørgjenge | 32 | 1" | 54 | 60 | 49 | 36 | 18 |
| 6211214 | 2562035 | 32mmx1 1/4" | Albue m/utv. rørgjenge | 32 | 1 1/4" | 54 | 60 | 49 | 36 | 18 |
| 6211245 | 2562339 | 40mmx1" | Albue m/utv. rørgjenge | 40 | 1" | 70 | 60 | 49 | 50 | 20 |
| 6210215 | 2562039 | 40mmx1.1/4" | Albue m/utv. rørgjenge | 40 | 1 1/4" | 80 | 65 | 49 | 50 | 30 |
| 6211215 | 2562041 | 40mmx1 1/2" | Albue m/utv. rørgjenge | 40 | 1 1/2" | 80 | 65 | 49 | 50 | 30 |
| 6210246 | 2564259 | 50mmx1" | Albue m/utv. rørgjenge | 50 | 1" | 80 | 69 | 60 | 52 | 28 |
| 6211246 | 2562344 | 50mmx1 1/4" | Albue m/utv. rørgjenge | 50 | 1 1/4" | 80 | 71 | 60 | 52 | 28 |
| 6210216 | 2562044 | 50mmx1.1/2" | Albue m/utv. rørgjenge | 50 | 1 1/2" | 80 | 72 | 60 | 52 | 28 |
| 6211216 | 2562045 | 50mmx2" | Albue m/utv. rørgjenge | 50 | 2" | 88 | 72 | 60 | 52 | 36 |
| 6211247 | 2561172 | 63mmx1 1/2" | Albue m/utv. rørgjenge | 63 | 1 1/2" | 100 | 80 | 76 | 62 | 38 |
| 6211217 | 2561168 | 63mmx2" | Albue m/utv. rørgjenge | 63 | 2" | 100 | 80 | 76 | 70 | 30 |



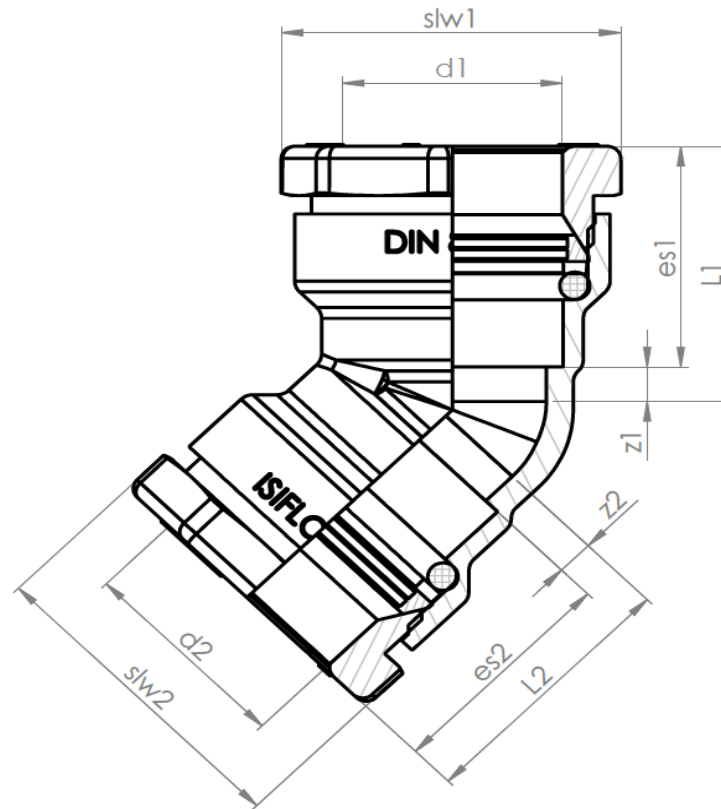
Type 122

| RWG nr. | NRF | Dimension | Description | d1 | d2 | L1 | L2 | slw1 | es1 | z1 |
|---------|---------|-------------|-------------------------|----|--------|-----|----|------|-----|----|
| 6211222 | 2562124 | 20mmx1/2" | Albue m/innv. Rørgjenge | 20 | 1/2" | 46 | 20 | 34 | 30 | 16 |
| 6218049 | 2562126 | 25mmx1/2" | Albue m/innv. Rørgjenge | 25 | 1/2" | 46 | 26 | 39 | 31 | 15 |
| 6214223 | 2562129 | 25mmx3/4" | Albue m/innv. Rørgjenge | 25 | 3/4" | 46 | 26 | 39 | 31 | 15 |
| 6218050 | 2562132 | 32mmx3/4" | Albue m/innv. Rørgjenge | 32 | 3/4" | 55 | 32 | 49 | 36 | 19 |
| 6211224 | 2562134 | 32mmx1" | Albue m/innv. Rørgjenge | 32 | 1" | 55 | 32 | 49 | 36 | 19 |
| 6218060 | 2562138 | 40mmx1" | Albue m/innv. Rørgjenge | 40 | 1" | 77 | 37 | 49 | 50 | 27 |
| 6211225 | 2562139 | 40mmx1 1/4" | Albue m/innv. Rørgjenge | 40 | 1 1/4" | 77 | 37 | 49 | 50 | 27 |
| 6218051 | 2562142 | 50mmx1 1/4" | Albue m/innv. Rørgjenge | 50 | 1 1/4" | 88 | 50 | 60 | 52 | 36 |
| 6211226 | 2562144 | 50mmx1 1/2" | Albue m/innv. Rørgjenge | 50 | 1 1/2" | 88 | 50 | 60 | 52 | 36 |
| 6211227 | 2561169 | 63mmx2" | Albue m/innv. Rørgjenge | 63 | 2" | 104 | 52 | 76 | 70 | 34 |



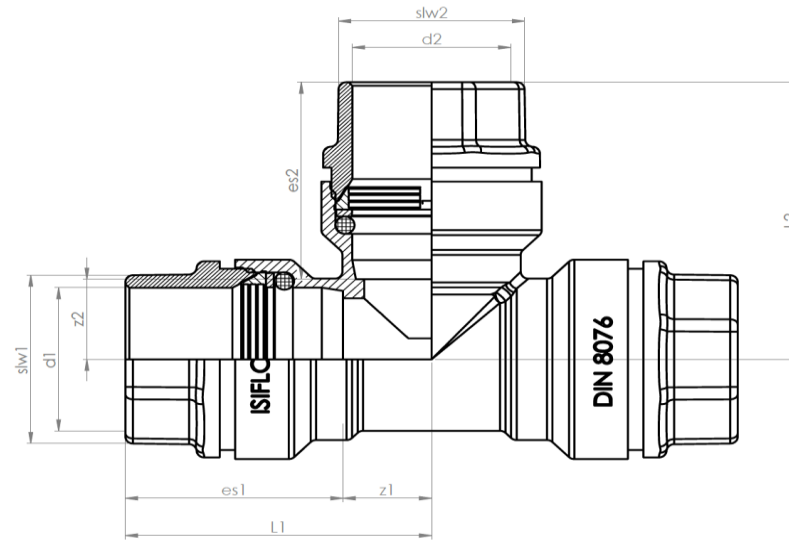
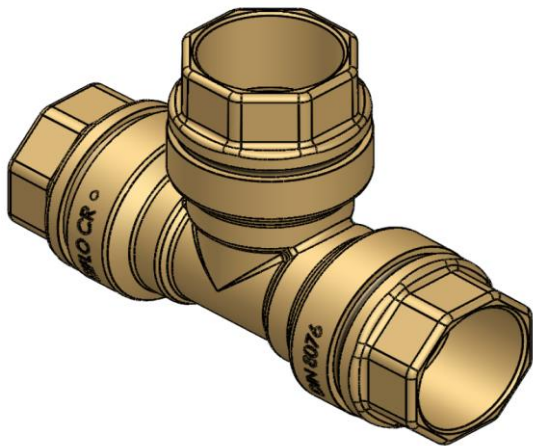
Type 123

| RWG nr. | NRF | Dimension | Description | d1 | d2 | L1 | L2 | slw1 | slw2 | z1 | z2 | es1 | es2 |
|---------|---------|-----------|-----------------|----|----|----|----|------|------|----|----|-----|-----|
| 6211233 | 2562229 | 25x25 | 45° albue-union | 25 | 25 | 37 | 37 | 39 | 39 | 6 | 6 | 31 | 31 |
| 6211234 | 2562234 | 32x32 | 45° albue-union | 32 | 32 | 41 | 41 | 49 | 49 | 5 | 5 | 36 | 36 |
| 6211235 | 2562239 | 40x40 | 45° albue-union | 40 | 40 | 64 | 64 | 49 | 49 | 14 | 14 | 50 | 50 |
| 6211236 | 2562244 | 50x50 | 45° albue-union | 50 | 50 | 71 | 71 | 60 | 60 | 19 | 19 | 52 | 52 |
| 6211237 | 2561171 | 63x63 | 45° albue-union | 63 | 63 | 84 | 84 | 76 | 76 | 22 | 22 | 62 | 62 |



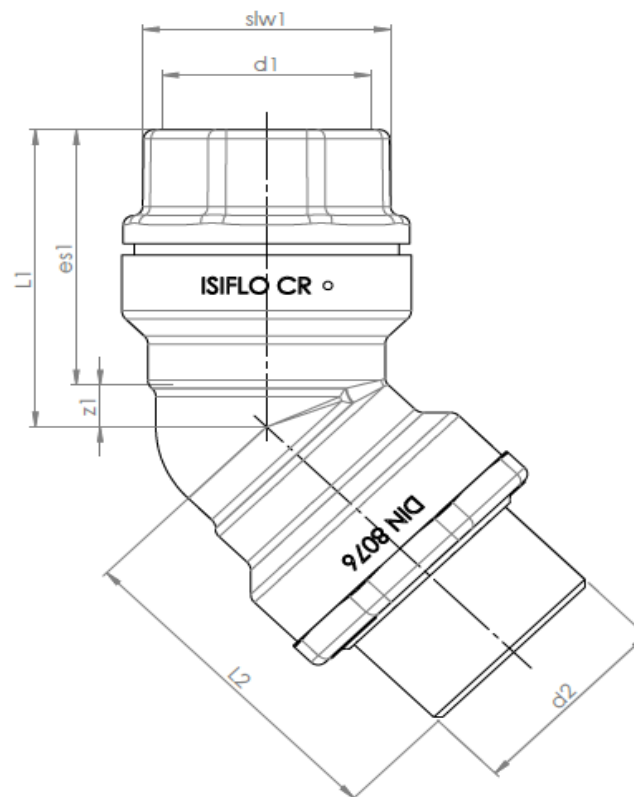
Type 125 / 130

| RWG nr. | NRF | Dimension | Description | d1 | d2 | L1 | L2 | slw1 | slw2 | es1 | es2 | z1 | z2 |
|---------|---------|------------|---------------------|----|----|-----|-----|------|------|-----|-----|----|----|
| 6211251 | 2562422 | 16mm | T-rør union | 16 | 16 | 40 | 42 | 29 | 29 | 30 | 30 | 10 | 12 |
| 6211252 | 2562424 | 20mm | T-rør union | 20 | 20 | 43 | 42 | 34 | 34 | 30 | 30 | 13 | 12 |
| 6211300 | 2562529 | 25x20x25mm | T-rør uniun m/redus | 25 | 20 | 46 | 46 | 39 | 34 | 31 | 30 | 15 | 16 |
| 6214253 | 2562429 | 25mm | T-rør union | 25 | 25 | 46 | 46 | 39 | 39 | 31 | 31 | 15 | 15 |
| 6211304 | 2562534 | 32x25x32mm | T-rør uniun m/redus | 32 | 25 | 55 | 55 | 49 | 39 | 36 | 31 | 19 | 24 |
| 6214254 | 2562434 | 32mm | T-rør union | 32 | 32 | 55 | 56 | 49 | 49 | 36 | 36 | 19 | 20 |
| 6211305 | 2562539 | 40x32x40mm | T-rør uniun m/redus | 40 | 32 | 75 | 57 | 49 | 49 | 50 | 36 | 25 | 21 |
| 6211255 | 2562439 | 40mm | T-rør union | 40 | 40 | 80 | 82 | 49 | 49 | 50 | 50 | 30 | 32 |
| 6211308 | 2562544 | 50x32x50mm | T-rør uniun m/redus | 50 | 32 | 82 | 65 | 60 | 49 | 52 | 36 | 30 | 29 |
| 6211306 | 2562549 | 50x40x50mm | T-rør uniun m/redus | 50 | 40 | 82 | 83 | 60 | 49 | 52 | 50 | 30 | 33 |
| 6211256 | 2562444 | 50mm | T-rør union | 50 | 50 | 87 | 89 | 60 | 60 | 52 | 52 | 35 | 37 |
| 6211309 | 2561175 | 63x32x63mm | T-rør uniun m/redus | 63 | 32 | 89 | 90 | 76 | 49 | 62 | 36 | 27 | 54 |
| 6211307 | 2561174 | 63x40x63mm | T-rør uniun m/redus | 63 | 40 | 94 | 95 | 76 | 49 | 62 | 50 | 32 | 45 |
| 6211257 | 2561173 | 63mm | T-rør union | 63 | 63 | 103 | 109 | 76 | 76 | 62 | 62 | 41 | 47 |



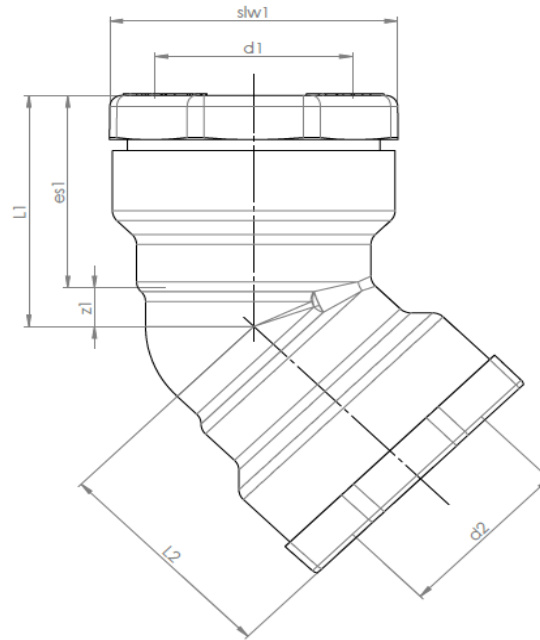
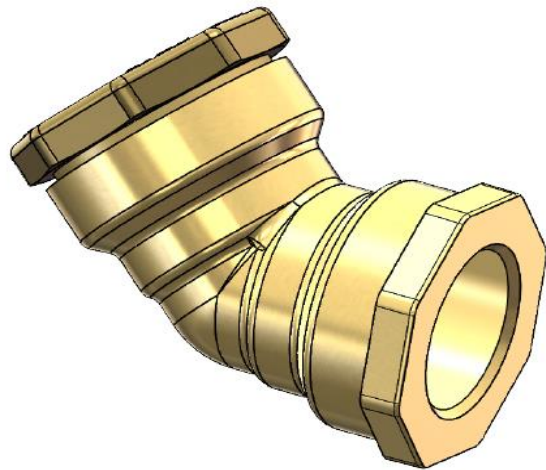
Type 126

| RWG nr. | NRF | Dimension | Description | d1 | d2 | L1 | L2 | slw1 | z1 | es1 |
|---------|---------|-----------|-------------------------|----|--------|----|----|------|----|-----|
| 6211263 | NA | 25x1/2" | 45° albue-utv gjenge | 25 | 1/2" | 37 | 56 | 39 | 6 | 31 |
| 6211234 | 2564273 | 32x1" | 45° albue-utv gjenge | 32 | 1" | 41 | 60 | 49 | 5 | 36 |
| 6211235 | 2564274 | 40x1 1/4" | 45° albue-utv gjenge | 40 | 1 1/4" | 64 | 69 | 49 | 14 | 50 |
| 6211236 | 2564275 | 50x1 1/2" | 45° albue-utv gjenge | 50 | 1 1/2" | 71 | 72 | 60 | 19 | 52 |
| 6211237 | NA | 63x2" | 45° albue-utv gjenge | 63 | 2" | 84 | 90 | 76 | 22 | 62 |



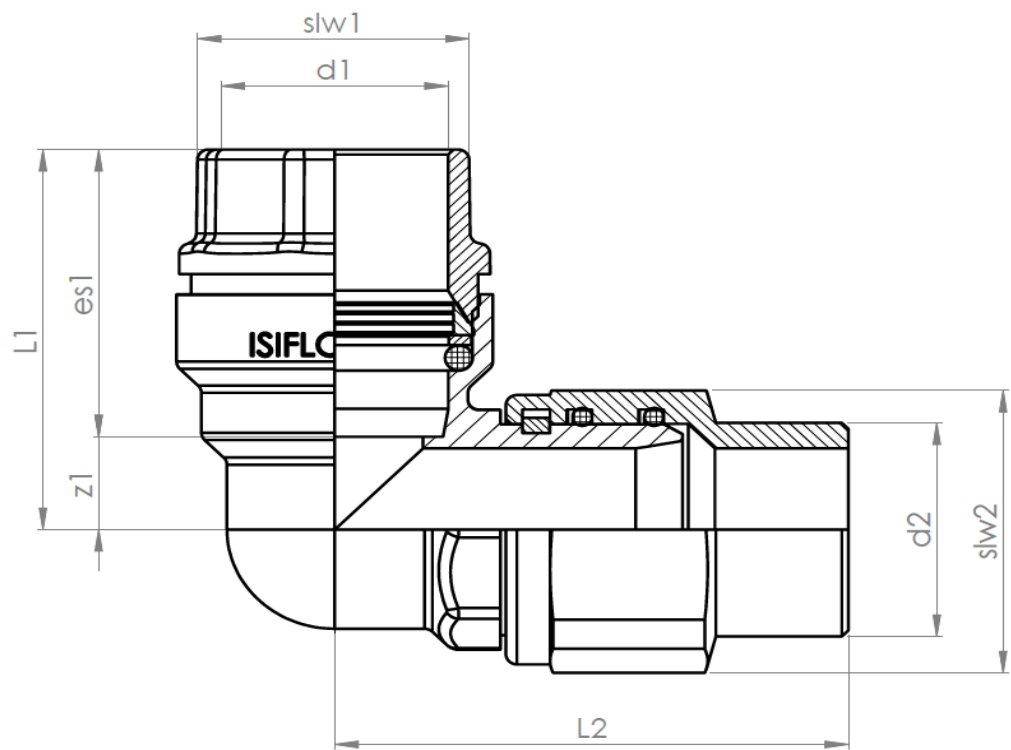
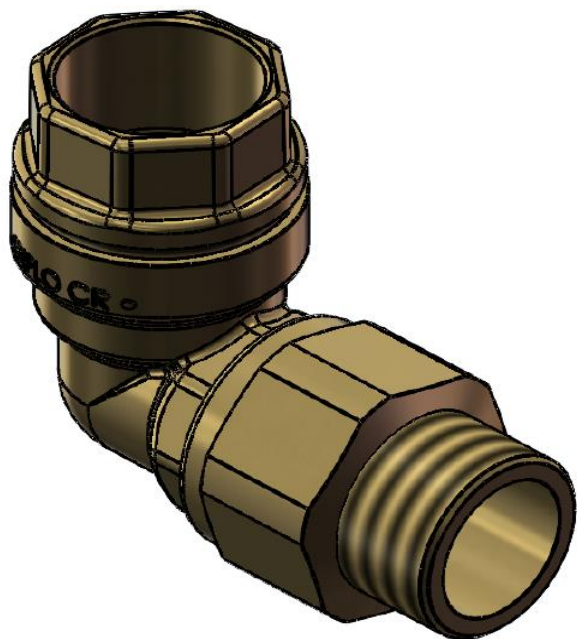
Type 127

| RWG nr. | NRF | Dimension | Description | d1 | d2 | L1 | L2 | slw1 | z1 | es1 |
|---------|---------|-----------|------------------------|----|--------|----|----|------|----|-----|
| 6210273 | 2564261 | 25x1/2" | 45° albue-innv. gjenge | 25 | 1/2" | 37 | 36 | 39 | 6 | 31 |
| 6211273 | 2564276 | 25x3/4" | 45° albue-innv. gjenge | 25 | 3/4" | 37 | 35 | 39 | 6 | 31 |
| 6212273 | 2564288 | 25x1" | 45° albue-innv. gjenge | 25 | 1" | 37 | 48 | 39 | 6 | 31 |
| 6210274 | 2564262 | 32x3/4" | 45° albue-innv. gjenge | 32 | 3/4" | 41 | 40 | 49 | 5 | 36 |
| 6211274 | 2564277 | 32x1" | 45° albue-innv. gjenge | 32 | 1" | 41 | 38 | 49 | 5 | 36 |
| 6210275 | 2564263 | 40x1" | 45° albue-innv. gjenge | 40 | 1" | 64 | 45 | 49 | 9 | 50 |
| 6211275 | 2564278 | 40x1 1/4" | 45° albue-innv. gjenge | 40 | 1 1/4" | 64 | 43 | 49 | 9 | 50 |
| 6210276 | 2564264 | 50x1 1/4" | 45° albue-innv. gjenge | 50 | 1 1/4" | 71 | 48 | 60 | 11 | 52 |
| 6211276 | 2564279 | 50x1 1/2" | 45° albue-innv. gjenge | 50 | 1 1/2" | 71 | 47 | 60 | 11 | 52 |
| 6214277 | 2564297 | 63x1 1/2" | 45° albue-innv. gjenge | 63 | 1 1/2" | 84 | 58 | 76 | 21 | 62 |
| 6212277 | 2564289 | 63x2" | 45° albue-innv. gjenge | 63 | 2" | 84 | 58 | 76 | 22 | 62 |



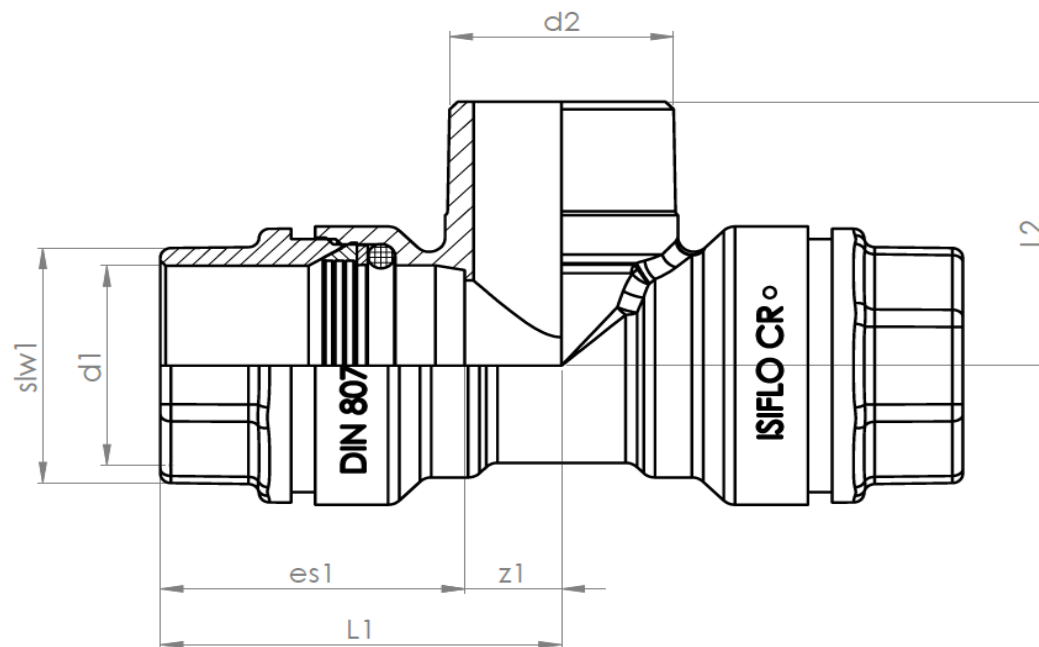
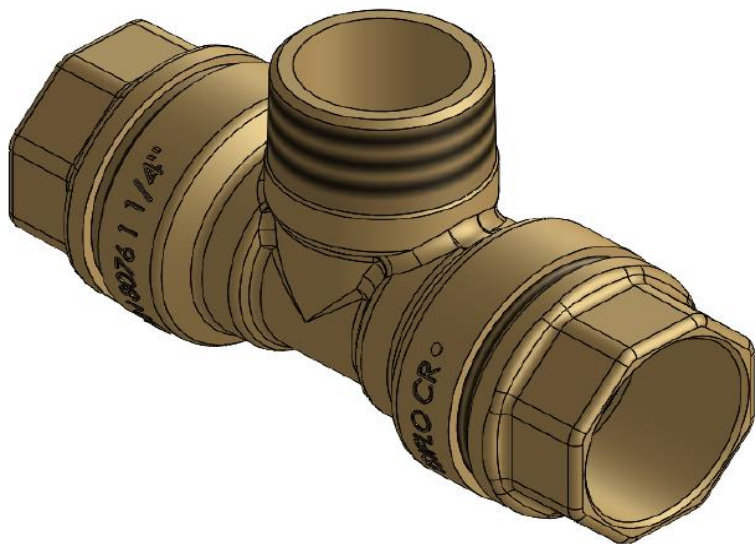
Type 129

| RWG nr. | NRF | Dimension | Description | d1 | d2 | L1 | L2 | slw1 | slw2 | es1 | z1 |
|---------|--------------|-------------|---------------|----|--------|----|-----|------|------|-----|----|
| 6211293 | 2562485 | 32mmx1 1/4" | Dreibar albue | 32 | 1 1/4" | 50 | 80 | 49 | 46 | 36 | 14 |
| 6211295 | 2562487 | 40mmx1 1/4" | Dreibar albue | 40 | 1 1/4" | 79 | 93 | 49 | 53 | 50 | 29 |
| 6211298 | 2562489 | 40mmx1 1/2" | Dreibar albue | 40 | 1 1/2" | 82 | 100 | 49 | 53 | 50 | 32 |
| 6211296 | Tysk variant | 50mmx1 1/2" | Dreibar albue | 50 | 1 1/2" | 82 | 108 | 60 | 53 | 52 | 30 |
| 6211299 | 2562498 | 63mmx2" | Dreibar albue | 63 | 2" | 97 | 121 | 76 | 75 | 62 | 35 |



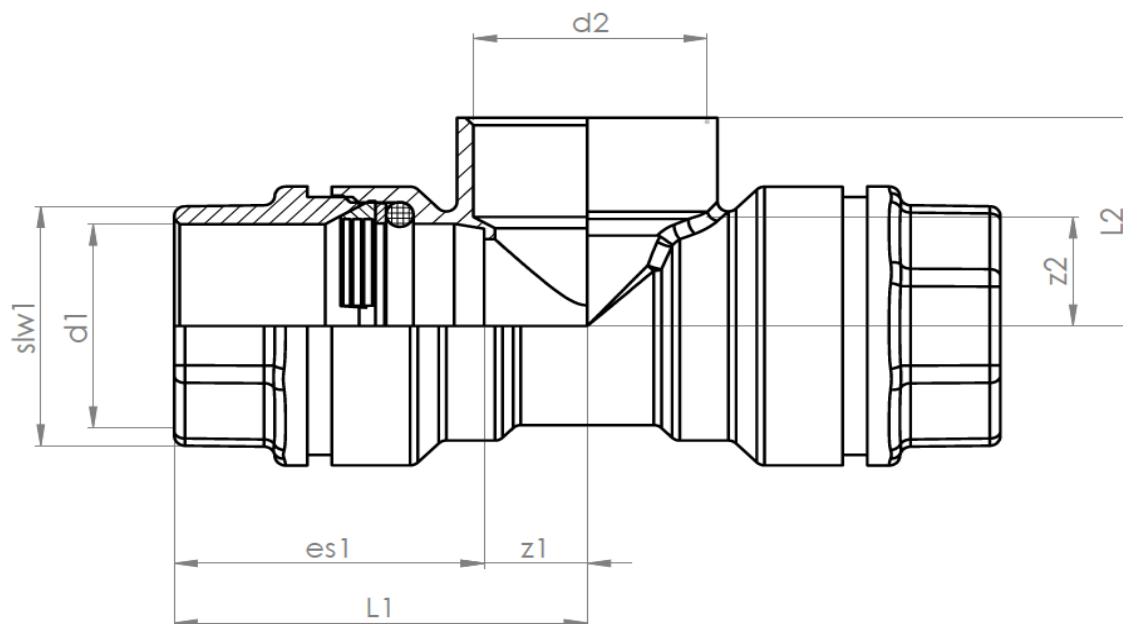
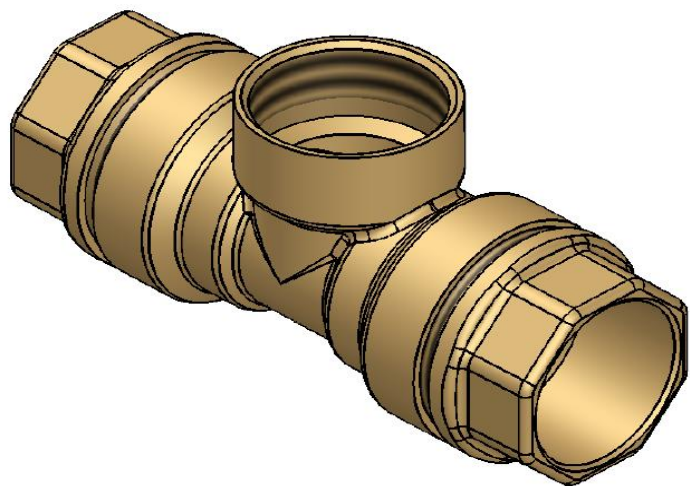
Type 131

| RWG nr. | NRF | Dimension | Description | d1 | d2 | L1 | L2 | slw1 | es1 | z1 |
|---------|---------|----------------|------------------------|----|--------|-----|----|------|-----|----|
| 6211312 | 2562624 | 20x1/2"x20mm | T-rør m/utv. rørgjenge | 20 | 1/2" | 40 | 35 | 34 | 30 | 10 |
| 6211313 | 2562629 | 25x3/4"x25mm | T-rør m/utv. rørgjenge | 25 | 3/4" | 43 | 39 | 39 | 31 | 12 |
| 6211314 | 2562634 | 32x1"x32mm | T-rør m/utv. rørgjenge | 32 | 1" | 51 | 47 | 49 | 36 | 15 |
| 6211315 | 2562639 | 40x1 1/4"x40mm | T-rør m/utv. rørgjenge | 40 | 1.1/4" | 76 | 54 | 49 | 50 | 26 |
| 6211316 | 2562644 | 50x1 1/2"x50mm | T-rør m/utv. rørgjenge | 50 | 1.1/2" | 80 | 59 | 60 | 52 | 28 |
| 6211317 | 2561176 | 63x2"x63mm | T-rør m/utv. rørgjenge | 63 | 2" | 100 | 71 | 76 | 62 | 38 |



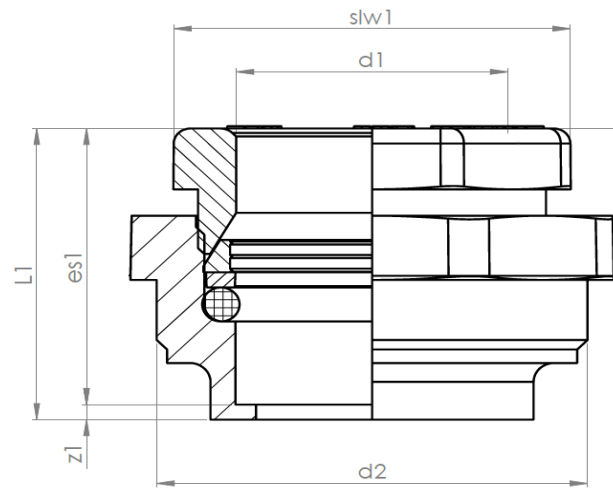
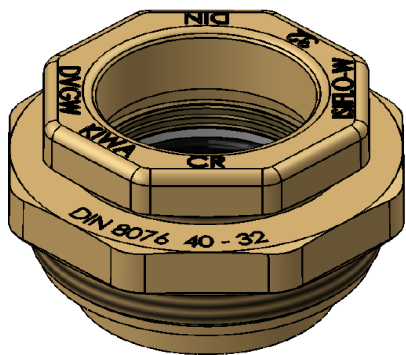
Type 132

| RWG nr. | NRF | Dimension | Description | d1 | d2 | L1 | L2 | slw1 | es1 | z1 | z2 |
|---------|---------|--------------|-------------------------|----|--------|-----|----|------|-----|----|------|
| 6211322 | 2562724 | 20x1/2"x20mm | T-rør m/innv. rørgjenge | 20 | 1/2" | 41 | 27 | 34 | 30 | 11 | 13 |
| 6211323 | 2562729 | 25x3/4"x25mm | T-rør m/innv. rørgjenge | 25 | 3/4" | 45 | 31 | 39 | 31 | 14 | 15.5 |
| 6211324 | 2562734 | 32x1"x32mm | T-rør m/innv. rørgjenge | 32 | 1" | 51 | 38 | 49 | 36 | 15 | 18 |
| 6211325 | 2562739 | 40mmx1 1/4" | T-rør m/innv. rørgjenge | 40 | 1.1/4" | 75 | 42 | 49 | 50 | 25 | 22 |
| 6211326 | 2562744 | 50mmx1 1/2" | T-rør m/innv. rørgjenge | 50 | 1.1/2" | 82 | 57 | 60 | 52 | 30 | 29 |
| 6211327 | 2561177 | 63x2"x63mm | T-rør m/innv. rørgjenge | 63 | 2" | 100 | 60 | 76 | 62 | 38 | 36 |



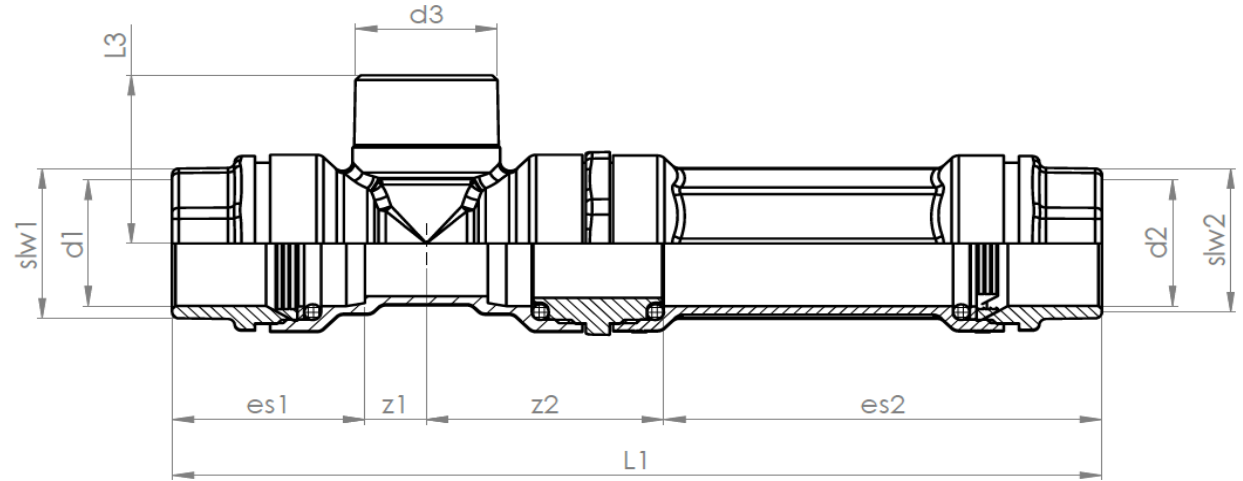
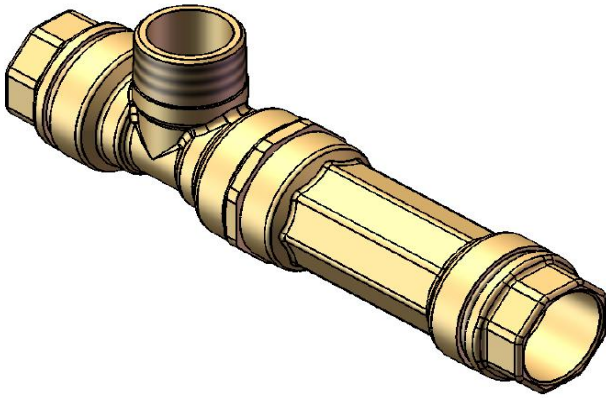
Type 135

| RWG nr. | NRF | Dimension | Description | d1 | d2 | L1 | es1 | z1 | slw1 |
|---------|---------|-----------|------------------|----|----|------|-----|-----|------|
| 6211403 | 2562929 | 25x16mm | Reduksjon Isiflo | 16 | 25 | 31.2 | 30 | 1.2 | 29 |
| 6211353 | 2562829 | 25x20mm | Reduksjon Isiflo | 20 | 25 | 31.2 | 30 | 1.2 | 34 |
| 6211404 | 2562934 | 32x20mm | Reduksjon Isiflo | 20 | 32 | 32 | 30 | 2 | 34 |
| 6211354 | 2562834 | 32x25mm | Reduksjon Isiflo | 25 | 32 | 33 | 31 | 2 | 39 |
| 6211405 | 2562939 | 40x25mm | Reduksjon Isiflo | 25 | 40 | 33 | 31 | 2 | 39 |
| 6211355 | 2562839 | 40x32mm | Reduksjon Isiflo | 32 | 40 | 37 | 35 | 2 | 49 |
| 6217355 | 2564305 | 40x34mm | Reduksjon Isiflo | 34 | 40 | 37 | 35 | 2 | 49 |
| 6211408 | 2562942 | 40x38mm | Reduksjon Isiflo | 38 | 40 | 53 | 51 | 2 | 49 |
| 6211406 | 2562944 | 50x32mm | Reduksjon Isiflo | 32 | 50 | 38 | 36 | 2 | 49 |
| 6211356 | 2562844 | 50x40mm | Reduksjon Isiflo | 40 | 50 | 52 | 50 | 2 | 49 |
| 6211409 | 2561179 | 63x40mm | Reduksjon Isiflo | 40 | 63 | 52 | 50 | 2 | 49 |
| 6211358 | 2561178 | 63x50mm | Reduksjon Isiflo | 50 | 63 | 54 | 52 | 2 | 60 |
| 6211410 | 2562855 | 63x57mm | Reduksjon Isiflo | 57 | 63 | 57 | 55 | 2 | 75 |



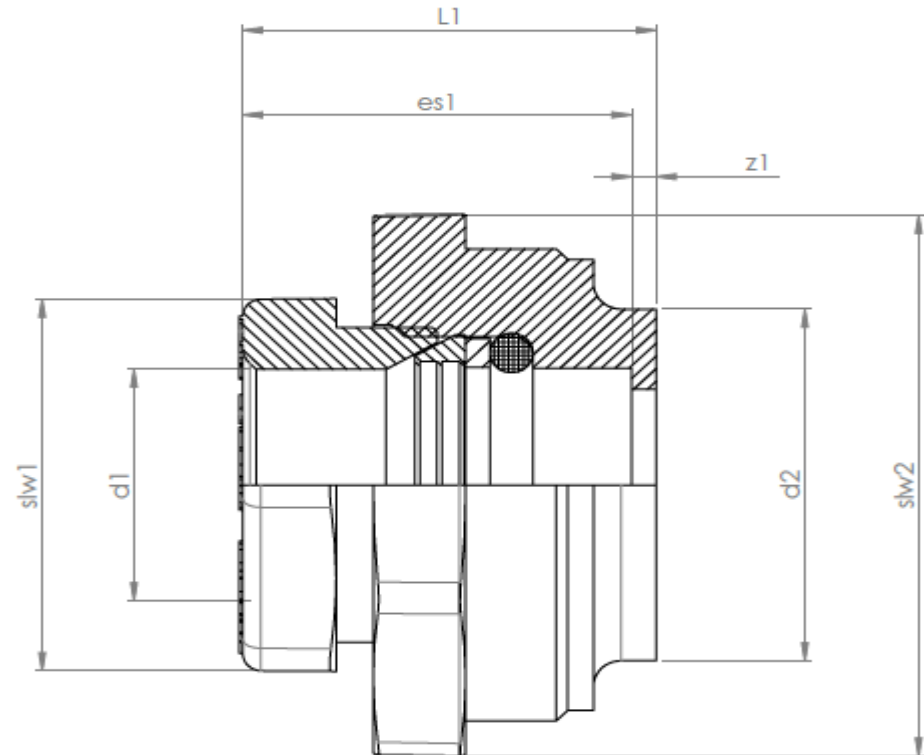
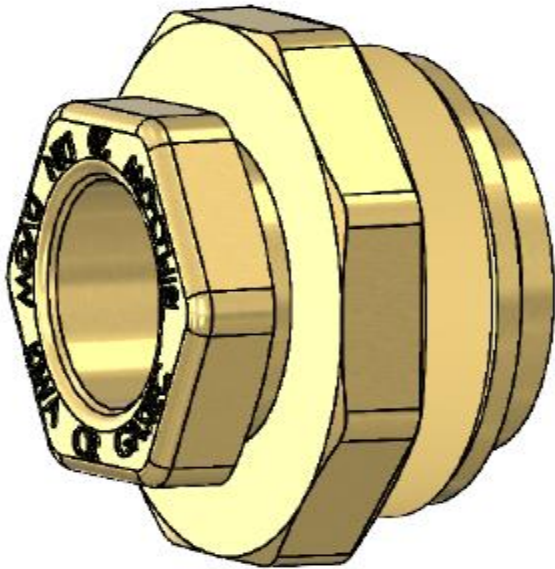
Type 136

| RWG nr. | NRF | Dimension | Description | d1 | d2 | d3 | L1 | L3 | es1 | es2 | z1 | z2 | slw1 | slw2 |
|---------|---------|-----------|------------------------------------|----|----|--------|-----|----|-----|-----|----|-----|------|------|
| 6211403 | 2562929 | 40mm | T-rør m/utv. rørgjenge + rep.muffe | 40 | 40 | 1 1/4" | 276 | 54 | 50 | 55 | 18 | 153 | 49 | 49 |
| 6211353 | 2562829 | 63mm | T-rør m/utv. rørgjenge + rep.muffe | 63 | 63 | 2" | 329 | 71 | 62 | 80 | 27 | 160 | 76 | 76 |



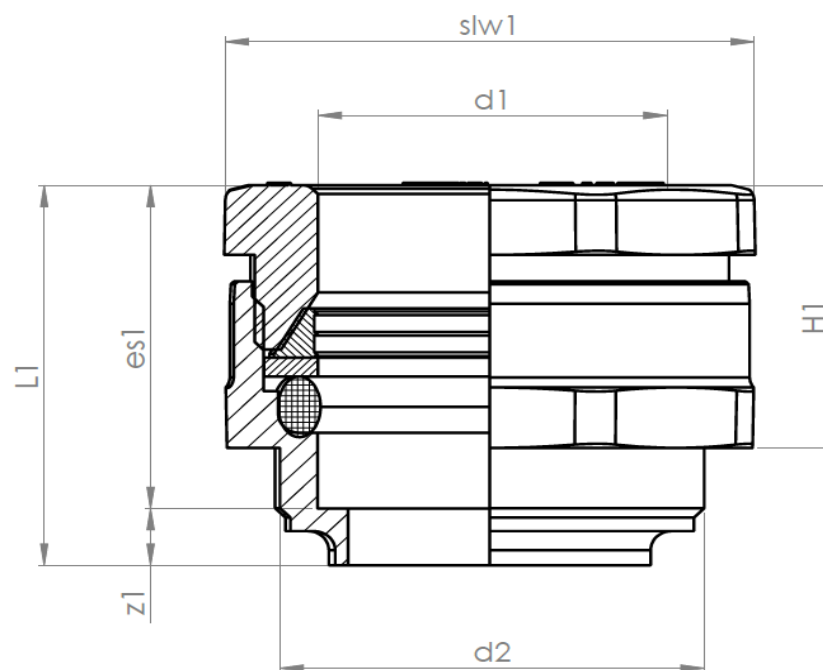
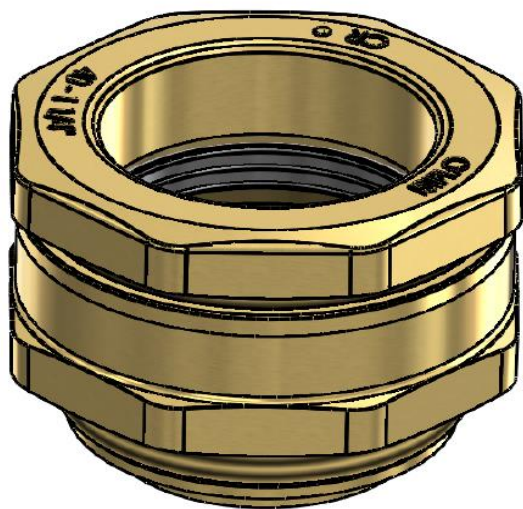
Type 140

| RWG nr. | NRF | Dimension | Description | d1 | d2 | L1 | es1 | z1 | slw1 | slw2 |
|---------|---------|-----------|-------------|----|----|----|-----|----|------|------|
| 6211403 | 2562929 | 25mm-16mm | Reduksjon | 16 | 25 | 32 | 30 | 2 | 29 | 41 |
| 6211404 | 2562934 | 32mm-20mm | Reduksjon | 20 | 32 | 34 | 30 | 4 | 34 | 49 |
| 6211405 | 2562939 | 40mm-25mm | Reduksjon | 25 | 40 | 34 | 31 | 3 | 39 | 60 |
| 6211406 | 2562944 | 50mm-32mm | Reduksjon | 32 | 50 | 39 | 36 | 3 | 49 | 70 |
| 6211409 | 2561179 | 63mm-40mm | Reduksjon | 40 | 63 | 57 | 50 | 7 | 49 | 90 |



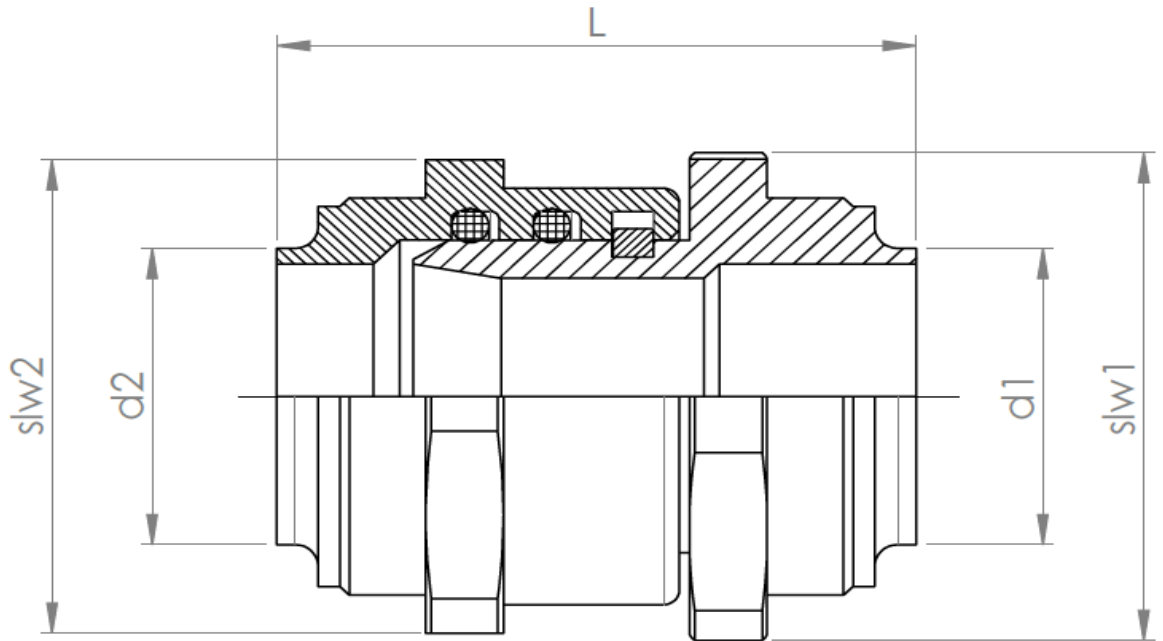
Type 142

| RWG nr. | NRF | Dimension | Description | d1 | d2 | L1 | slw1 | H1 | es1 | z1 |
|---------|---------|---------------|---------------------|----|--------|----|------|----|-----|----|
| 6211423 | 2562965 | 25mm x 3/4" | Stålovergang Isiflo | 25 | 3/4" | 45 | 47 | 34 | 39 | 6 |
| 6211424 | 2562967 | 32mm x 1" | Stålovergang Isiflo | 32 | 1" | 46 | 54 | 34 | 39 | 7 |
| 6211425 | 2562969 | 40mm x 1 1/4" | Stålovergang Isiflo | 40 | 1.1/4" | 51 | 65 | 35 | 43 | 8 |
| 6211426 | 2562973 | 50mm x 1 1/2" | Stålovergang Isiflo | 50 | 1.1/2" | 52 | 69 | 35 | 44 | 8 |
| 6211428 | 2561181 | 63mm x 2" | Stålovergang Isiflo | 63 | 2" | 57 | 86 | 37 | 49 | 8 |



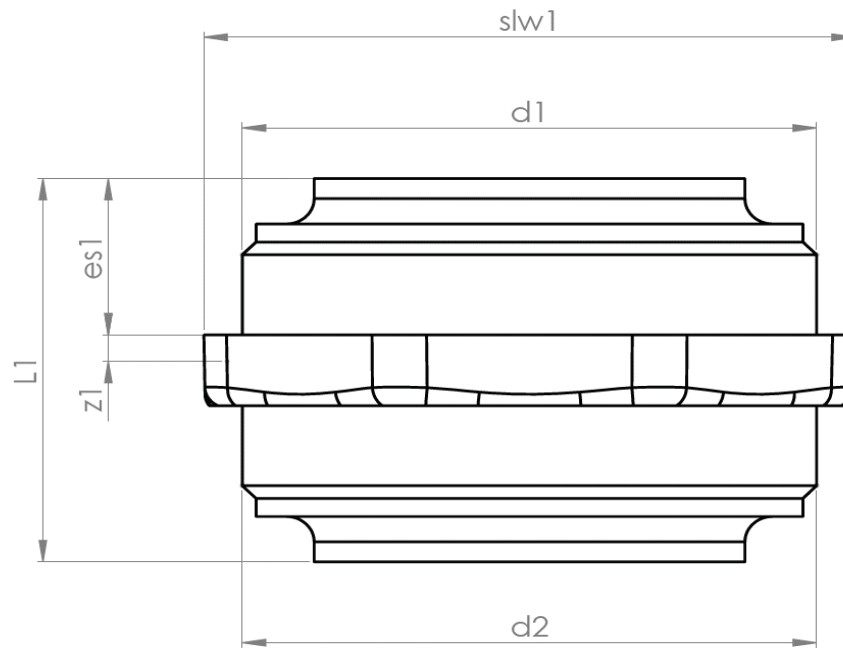
Type 143

| RWG nr. | NRF | Dimension | Description | d1 | d2 | L | slw1 | slw2 |
|---------|---------|-----------|---------------------------------|----|----|----|------|------|
| 6211433 | 2563075 | 25mm | Dreibar dobbeltnippel Isiflo | 25 | 25 | 58 | 38 | 38 |
| 6211434 | 2563076 | 32mm | Dreibar dobbeltnippel Isiflo | 32 | 32 | 62 | 50 | 50 |
| 6211435 | 2563078 | 40mm | Dreibar dobbeltnippel Isiflo | 40 | 40 | 69 | 60 | 60 |



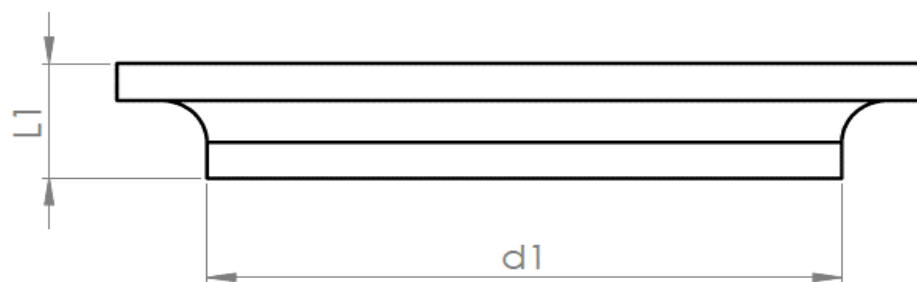
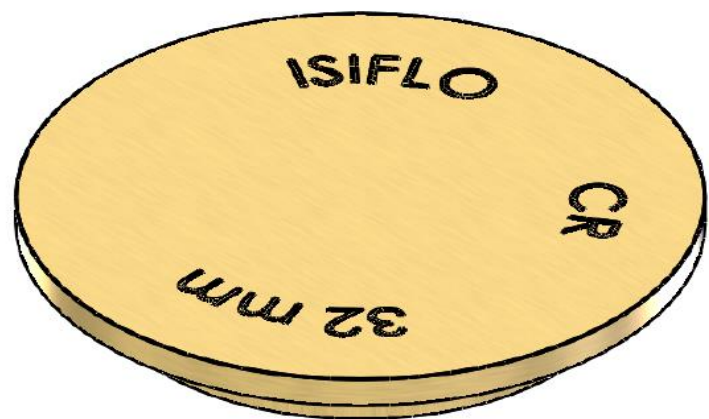
Type 144

| RWG nr. | NRF | Dimension | Description | d1 | d2 | L1 | z1 | slw1 | es1 |
|---------|---------|-----------|----------------------|----|----|----|-----|------|-----|
| 6218043 | 2563131 | 25mm | Dobbeltnippel Isiflo | 25 | 25 | 33 | 3 | 45 | 13 |
| 6218048 | 2563134 | 32mm | Dobbeltnippel Isiflo | 32 | 32 | 36 | 3.5 | 48 | 15 |
| 6218044 | 2563139 | 40mm | Dobbeltnippel Isiflo | 40 | 40 | 38 | 3.5 | 59 | 16 |
| 6218045 | 2563144 | 50mm | Dobbeltnippel Isiflo | 50 | 50 | 41 | 4 | 70 | 17 |
| 6211447 | 2561182 | 63mm | Dobbeltnippel Isiflo | 63 | 63 | 47 | 4 | 89 | 20 |



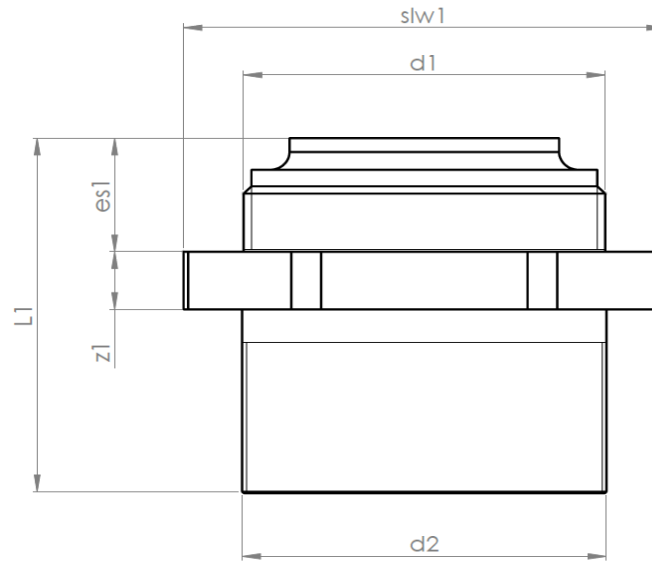
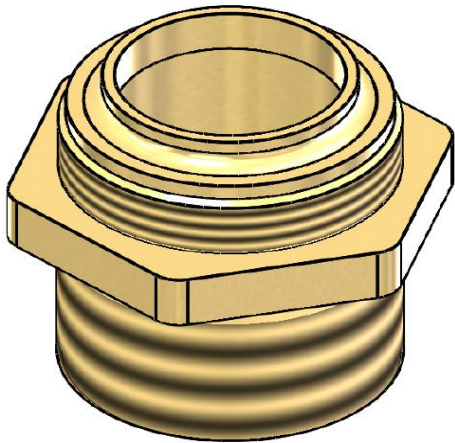
Type 145

| RWG nr. | NRF | Dimension | Description | d1 | L1 |
|---------|---------|-----------|--------------|----|-----|
| 6211452 | 2563224 | 20mm | Plugg Isiflo | 20 | 5.2 |
| 6211453 | 2563229 | 25mm | Plugg Isiflo | 25 | 5.2 |
| 6211454 | 2563234 | 32mm | Plugg Isiflo | 32 | 6.2 |
| 6211455 | 2563239 | 40mm | Plugg Isiflo | 40 | 6.7 |
| 6211456 | 2563244 | 50mm | Plugg Isiflo | 50 | 7.5 |
| 6211458 | 2561183 | 63mm | Plugg Isiflo | 63 | 8 |



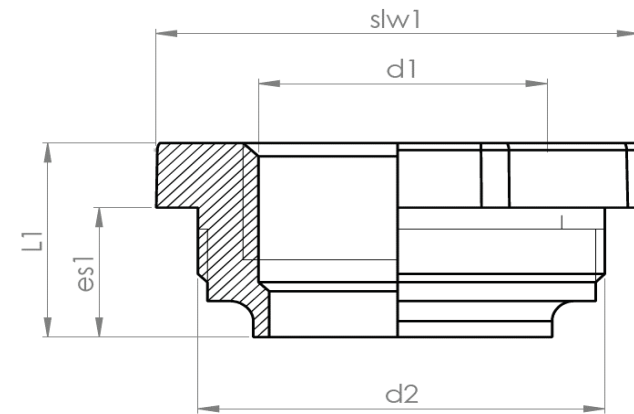
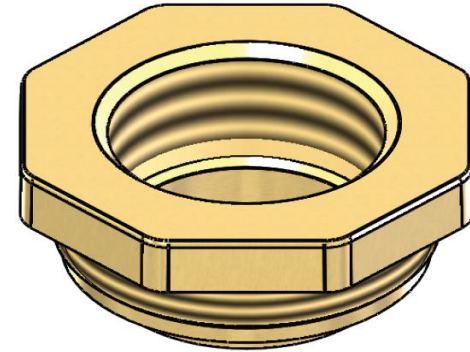
Type 146 / 147

| RWG nr. | NRF | Dimension | Description | d1 | d2 | L1 | slw1 | es1 | z1 |
|---------|---------|-------------|-------------------------------------|----|--------|----|------|-----|----|
| 6211472 | 2563424 | 20mmx1/2" | Isiflo overgang m/utv. rørgjenge | 20 | 1/2" | 36 | 34 | 13 | 7 |
| 6211473 | 2563429 | 25mmx3/4" | Isiflo overgang m/utv. rørgjenge | 25 | 3/4" | 38 | 41 | 13 | 7 |
| 6211463 | 2563329 | 25mmx1" | Isiflo overgang m/utv. rørgjenge | 25 | 1" | 41 | 41 | 13 | 7 |
| 6211474 | 2563434 | 32mmx1" | Isiflo overgang m/utv. rørgjenge | 32 | 1" | 44 | 49 | 15 | 7 |
| 6211464 | 2563334 | 32mmx1 1/4" | Isiflo overgang m/utv. rørgjenge | 32 | 1.1/4" | 45 | 49 | 15 | 7 |
| 6211477 | NA | 40mmx1" | Isiflo overgang m/utv. rørgjenge | 40 | 1" | 45 | 60 | 16 | 9 |
| 6211475 | 2563439 | 40mmx1 1/4" | Isiflo overgang m/utv. rørgjenge | 40 | 1.1/4" | 47 | 60 | 16 | 9 |
| 6211465 | 2563339 | 40mmx1 1/2" | Isiflo overgang m/utv. rørgjenge | 40 | 1.1/2" | 47 | 60 | 16 | 9 |
| 6211476 | 2563444 | 50mmx1 1/2" | Isiflo overgang m/utv. rørgjenge | 50 | 1.1/2" | 48 | 69 | 17 | 8 |
| 6211466 | 2563344 | 50mmx2" | Isiflo overgang m/utv. rørgjenge | 50 | 2" | 52 | 69 | 17 | 8 |
| 6211478 | 2561184 | 63mmx2" | Isiflo overgang m/utv. rørgjenge | 63 | 2" | 58 | 89 | 20 | 9 |



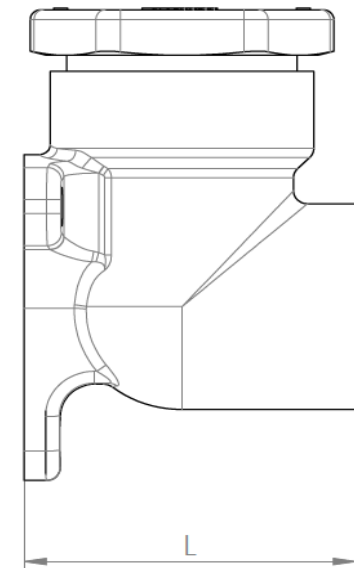
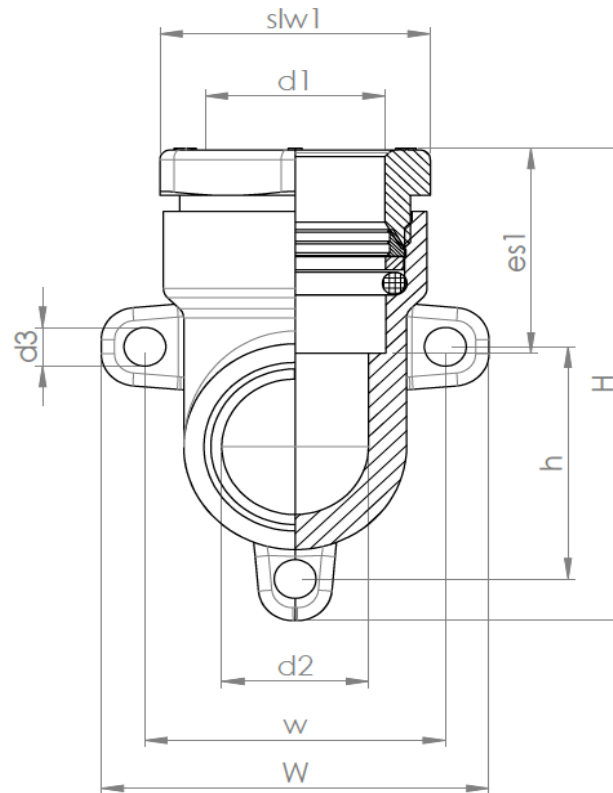
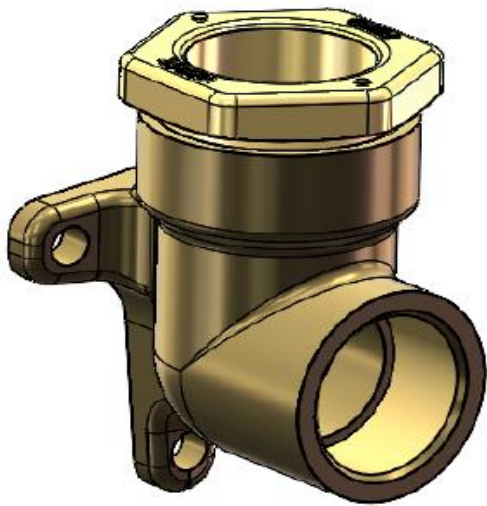
Type 148 / 149

| RWG nr. | NRF | Dimension | Description | d1 | d2 | slw1 | L1 | es1 |
|---------|---------|-------------|-----------------------------------|--------|----|------|----|-----|
| 6211482 | 2563524 | 20mmx1/2" | Isiflo overgang m/innv. rørgjenge | 1/2" | 20 | 34 | 20 | 13 |
| 6211493 | 2563629 | 25mmx1/2" | Isiflo overgang m/innv. rørgjenge | 1/2" | 25 | 41 | 20 | 13 |
| 6211483 | 2563529 | 25mmx3/4" | Isiflo overgang m/innv. rørgjenge | 3/4" | 25 | 41 | 20 | 13 |
| 6218004 | 2563523 | 25mmx1" | Isiflo overgang m/innv. rørgjenge | 1" | 25 | 41 | 33 | 13 |
| 6211494 | 2563634 | 32mmx3/4" | Isiflo overgang m/innv. rørgjenge | 3/4" | 32 | 49 | 22 | 16 |
| 6211484 | 2563534 | 32mmx1" | Isiflo overgang m/innv. rørgjenge | 1" | 32 | 49 | 22 | 15 |
| 6211498 | 2564287 | 40mmx3/4" | Isiflo overgang m/innv. rørgjenge | 3/4" | 40 | 60 | 23 | 17 |
| 6211495 | 2563639 | 40mmx1" | Isiflo overgang m/innv. rørgjenge | 1" | 40 | 60 | 23 | 17 |
| 6211485 | 2563539 | 40mmx1 1/4" | Isiflo overgang m/innv. rørgjenge | 1.1/4" | 40 | 60 | 23 | 17 |
| 6211488 | 2563542 | 42mmx1 1/4" | Isiflo overgang m/innv. rørgjenge | 1.1/4" | 42 | 60 | 23 | 17 |
| 6211496 | 2563644 | 50mmx1 1/4" | Isiflo overgang m/innv. rørgjenge | 1.1/4" | 50 | 69 | 24 | 17 |
| 6211486 | 2563544 | 50mmx1 1/2" | Isiflo overgang m/innv. rørgjenge | 1.1/2" | 50 | 69 | 24 | 17 |
| 6211489 | 2561185 | 63mmx2" | Isiflo overgang m/innv. rørgjenge | 2" | 63 | 89 | 27 | 20 |



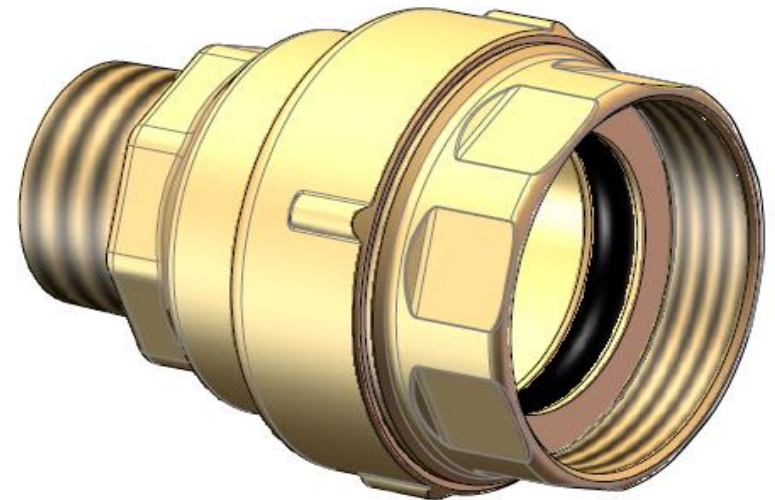
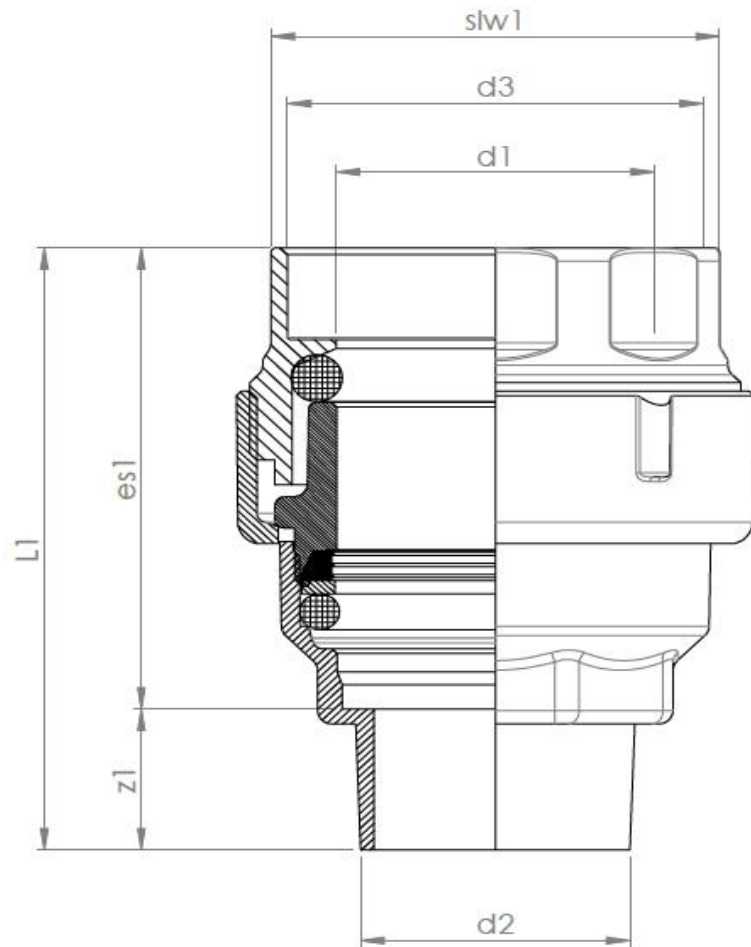
Type 150

| RWG nr. | NRF | Dimension | Description | d1 | d2 | L | slw1 | es1 | H | h | W | w | d3 |
|---------|---------|-----------|-------------------|----|------|----|------|-----|----|----|----|----|----|
| 6211501 | 2563722 | 16mmx1/2" | Platealbue Isiflo | 16 | 1/2" | 46 | 29 | 30 | 73 | 36 | 56 | 43 | 6 |
| 6211502 | 2563724 | 20mmx1/2" | Platealbue Isiflo | 20 | 1/2" | 46 | 34 | 30 | 74 | 36 | 56 | 43 | 6 |
| 6211504 | 2563729 | 25mmx1/2" | Platealbue Isiflo | 25 | 1/2" | 46 | 39 | 31 | 74 | 36 | 56 | 43 | 6 |
| 6211503 | 2563734 | 25mmx3/4" | Platealbue Isiflo | 25 | 3/4" | 48 | 39 | 31 | 74 | 36 | 56 | 43 | 6 |



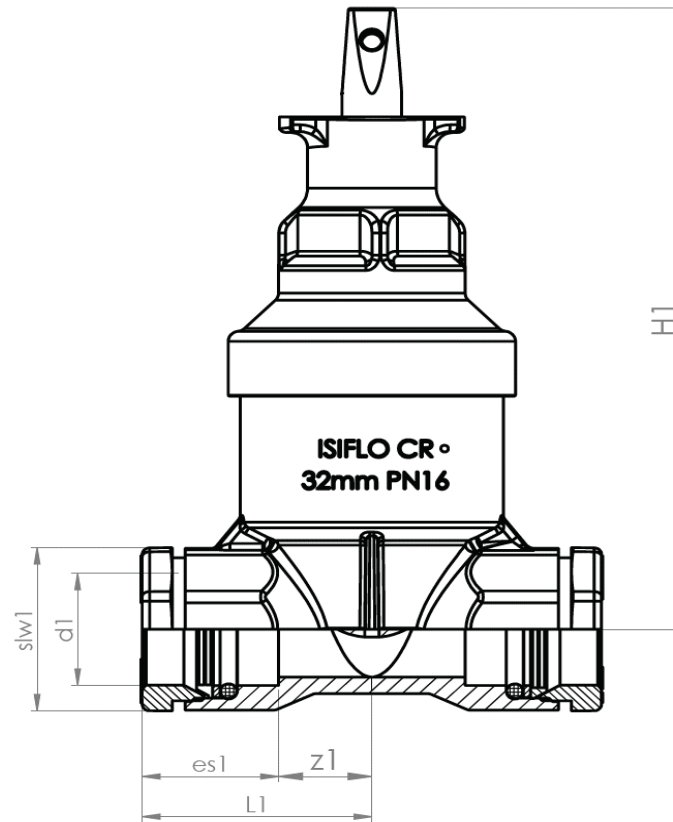
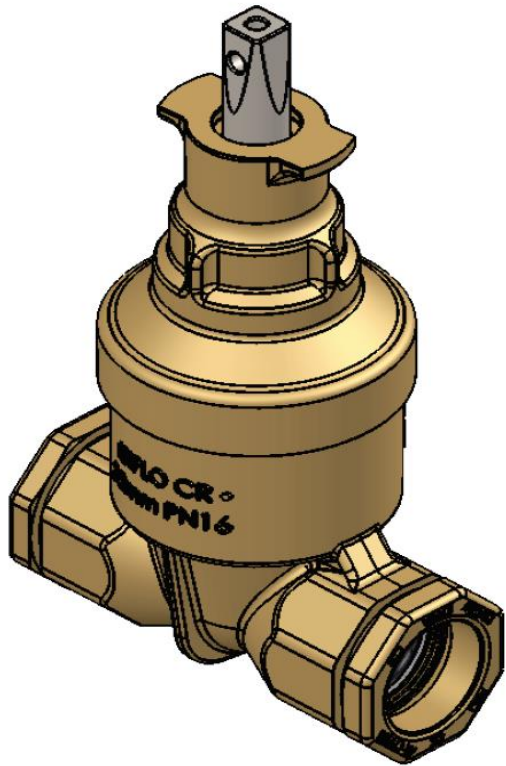
Type 175

| RWG nr. | NRF | Dimension | Description | d1 | d2 | d3 | L | slw1 | es1 | z1 |
|---------|-----|-----------|------------------------|----|----|----|-----|------|-----|----|
| 6211540 | NA | 63mm x 2" | Rettkobling for murgj. | 63 | 2" | 3" | 149 | 92 | 103 | 46 |



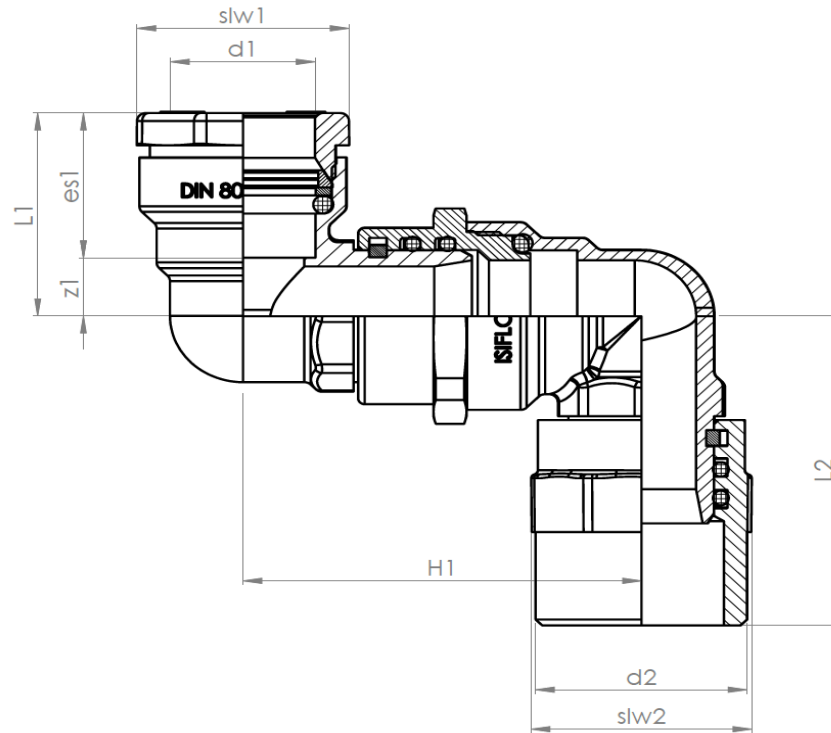
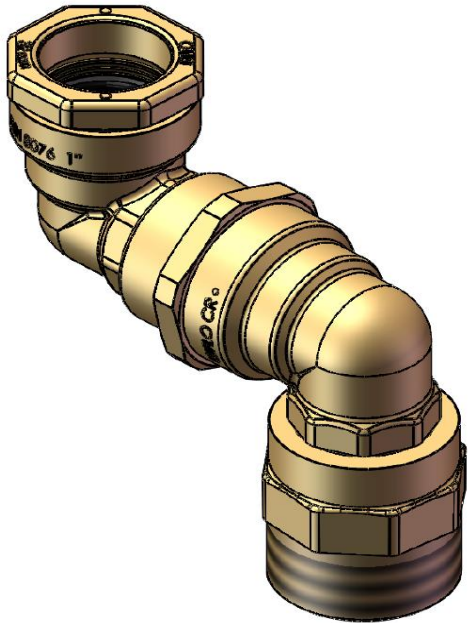
Type 200

| RWG nr. | NRF | Dimension | Description | d1 | L1 | slw1 | es1 | z1 | H1 |
|---------|---------|-----------|------------------|----|-----|------|-----|-----|-----|
| 6216025 | 3383604 | 25mm | Bakkekran Isiflo | 25 | 138 | 39 | 31 | 107 | 185 |
| 6216032 | 3383606 | 32mm | Bakkekran Isiflo | 32 | 123 | 49 | 36 | 87 | 185 |
| 6216040 | 3383608 | 40mm | Bakkekran Isiflo | 40 | 81 | 49 | 50 | 37 | 198 |
| 6216050 | 3383611 | 50mm | Bakkekran Isiflo | 50 | 168 | 60 | 52 | 116 | 198 |
| 6216063 | 3383613 | 63mm | Bakkekran Isiflo | 63 | 206 | 76 | 62 | 144 | 206 |



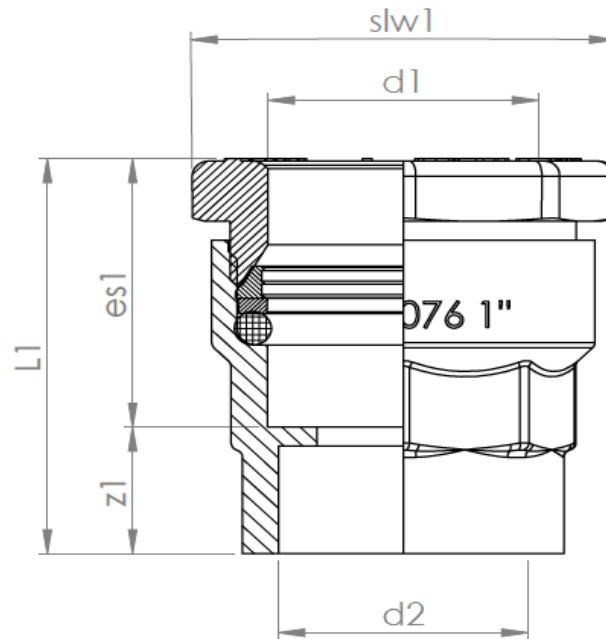
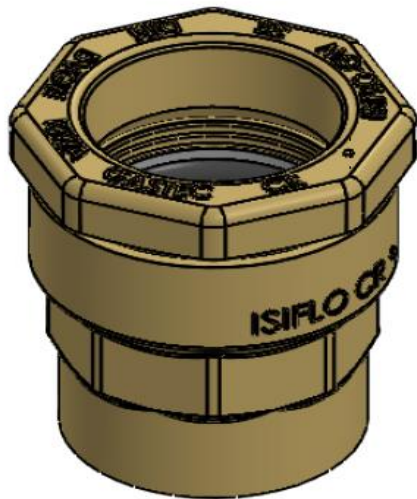
Type 229

| RWG nr. | NRF | Dimension | Description | d1 | d2 | L1 | L2 | slw1 | slw2 | es1 | z1 | H1 |
|---------|---------|-------------|----------------------|----|--------|----|-----|------|------|-----|----|-----|
| 6212292 | 2563092 | 32mmx1 1/4" | Dreibar dobbel albue | 32 | 1 1/4" | 48 | 75 | 49 | 44 | 36 | 12 | 92 |
| 6212293 | 2563091 | 32mmx1 1/2" | Dreibar dobbel albue | 32 | 1 1/2" | 48 | 80 | 49 | 49 | 36 | 12 | 92 |
| 6212291 | 2563094 | 40mmx1 1/4" | Dreibar dobbel albue | 40 | 1 1/4" | 76 | 90 | 49 | 53 | 50 | 26 | 106 |
| 6212298 | 2563096 | 40mmx1 1/2" | Dreibar dobbel albue | 40 | 1 1/2" | 76 | 90 | 49 | 53 | 50 | 26 | 106 |
| 6212295 | 2563097 | 50mmx1 1/4" | Dreibar dobbel albue | 50 | 1 1/4" | 78 | 90 | 60 | 53 | 52 | 26 | 114 |
| 6212294 | 2563098 | 50mmx1 1/2" | Dreibar dobbel albue | 50 | 1 1/2" | 78 | 93 | 60 | 53 | 52 | 26 | 114 |
| 6212299 | 2563093 | 63mmx2" | Dreibar dobbel albue | 63 | 2" | 97 | 121 | 76 | 75 | 62 | 35 | 137 |



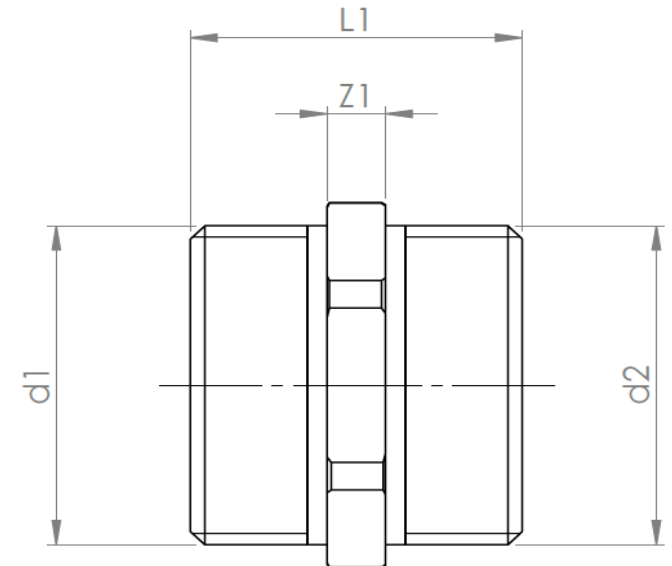
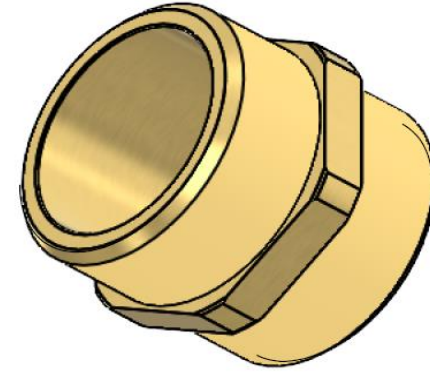
Type 315 / 316

| RWG nr. | NRF | Dimension | Description | d1 | d2 | L1 | slw1 | es1 | z1 |
|---------|-----|----------------|--|----|--------|-----|------|-----|----|
| 6213163 | NA | 25mm x R3/4" | Union m/ innvendig rørgjenge for flatpakning | 25 | 3/4" | 45 | 39 | 31 | 14 |
| 6213153 | NA | 25mm x R1" | Union m/ innvendig rørgjenge for flatpakning | 25 | 1" | 47 | 39 | 31 | 16 |
| 6213168 | NA | 32mm x G3/4" | Union m/ innvendig rørgjenge for flatpakning | 32 | 3/4" | 50 | 49 | 36 | 14 |
| 6213164 | NA | 32mm x G1" | Union m/ innvendig rørgjenge for flatpakning | 32 | 1" | 53 | 49 | 36 | 17 |
| 6213155 | NA | 40mm x R1 1/2" | Union m/ innvendig rørgjenge for flatpakning | 40 | 1 1/2" | 73 | 49 | 50 | 23 |
| 6213166 | NA | 50mm x 1 1/2" | Union m/ innvendig rørgjenge for flatpakning | 50 | 1 1/2" | 75 | 60 | 52 | 23 |
| 6213167 | NA | 63mm x R2" | Union m/ innvendig rørgjenge for flatpakning | 63 | 2" | 104 | 76 | 70 | 34 |



Ansatsnippel

| RWG nr. | NRF | Dimension | Description | d1 | d2 | L1 | z1 |
|---------|---------|-----------|--------------|--------|--------|------|-----|
| 5012003 | 5020371 | 1/8" | Ansatsnippel | 1/8" | 1/8" | 17 | 4 |
| 5012006 | 5020372 | 1/4" | Ansatsnippel | 1/4" | 1/4" | 21.5 | 4.5 |
| 5012009 | 5020373 | 3/8" | Ansatsnippel | 3/8" | 3/8" | 22.5 | 4.5 |
| 5012013 | 5020374 | 1/2" | Ansatsnippel | 1/2" | 1/2" | 27.5 | 5.5 |
| 5012016 | 5020375 | 3/4" | Ansatsnippel | 3/4" | 3/4" | 31 | 6 |
| 5012019 | 5020376 | 1" | Ansatsnippel | 1" | 1" | 34 | 6 |
| 5012023 | 5020377 | 1 1/4" | Ansatsnippel | 1 1/4" | 1 1/4" | 39.6 | 7 |
| 5012026 | 5020378 | 1 1/2" | Ansatsnippel | 1 1/2" | 1 1/2" | 40 | 8 |
| 5012033 | 5020379 | 2" | Ansatsnippel | 2" | 2" | 46 | 8 |
| 5012039 | 5020381 | 2 1/2" | Ansatsnippel | 2 1/2" | 2 1/2" | 52 | 10 |



Overgangsansatsnippel

| RWG nr. | NRF | Dimension | Description | d1 | d2 | L1 | es1 | es2 | z1 |
|---------|---------|-----------------|-----------------------|--------|--------|------|------|------|-----|
| 5012103 | 5020391 | 1/4" x 1/8" | Overgangsansatsnippel | 1/4" | 1/8" | 19.5 | 8.5 | 6.5 | 4.5 |
| 5012106 | 5020392 | 3/8" x 1/8" | Overgangsansatsnippel | 3/8" | 1/8" | 20.5 | 9 | 6.5 | 5 |
| 5012109 | 5020393 | 3/8" x 1/4" | Overgangsansatsnippel | 3/8" | 1/4" | 22.5 | 9 | 8.5 | 5 |
| 5012113 | 5020394 | 1/2" x 1/4" | Overgangsansatsnippel | 1/2" | 1/2" | 27.5 | 11 | 8.5 | 5.5 |
| 5012116 | 5020395 | 1/2" x 3/8" | Overgangsansatsnippel | 1/2" | 3/8" | 25.5 | 11 | 9 | 5.5 |
| 5012119 | 5020396 | 3/4" x 3/8" | Overgangsansatsnippel | 3/4" | 3/8" | 27.5 | 12.5 | 9 | 6 |
| 5012123 | 5020397 | 3/4" x 1/2" | Overgangsansatsnippel | 3/4" | 1/2" | 29.5 | 12.5 | 11 | 6 |
| 5012126 | 5020398 | 1" x 1/2" | Overgangsansatsnippel | 1" | 1/2" | 31 | 14 | 11 | 6 |
| 5012129 | 5020399 | 1" x 3/4" | Overgangsansatsnippel | 1" | 3/4" | 34,5 | 14 | 13 | 8 |
| 5012133 | 5020401 | 1 1/4" x 3/4" | Overgangsansatsnippel | 1 1/4" | 3/4" | 36 | 16 | 12.5 | 7.5 |
| 5012136 | 5020402 | 1 1/4" x 1" | Overgangsansatsnippel | 1 1/4" | 1" | 37 | 16 | 14 | 7 |
| 5012141 | 5020404 | 1 1/2" x 1" | Overgangsansatsnippel | 1 1/2" | 1" | 38 | 16 | 14 | 8 |
| 5012143 | 5020405 | 1 1/2" x 1 1/4" | Overgangsansatsnippel | 1 1/2" | 1 1/4" | 40 | 16 | 16 | 8 |
| 5012146 | 5020406 | 2" x 1" | Overgangsansatsnippel | 2" | 1" | 41 | 19 | 14 | 8 |
| 5012147 | 5020407 | 2" x 1 1/4" | Overgangsansatsnippel | 2" | 1 1/4" | 43 | 19 | 16 | 8 |
| 5012149 | 5020408 | 2" x 1 1/2" | Overgangsansatsnippel | 2" | 1 1/2" | 43 | 19 | 16 | 8 |
| 5012153 | 5020409 | 2 1/2" x 2" | Overgangsansatsnippel | 2 1/2" | 2" | 48 | 21 | 19 | 8 |
| 5012156 | 5020411 | 3" x 2" | Overgangsansatsnippel | 3" | 2" | 53 | 24 | 19 | 10 |
| 5012159 | 5020412 | 3" x 2 1/2" | Overgangsansatsnippel | 3" | 2 1/2" | 55 | 24 | 21 | 10 |

