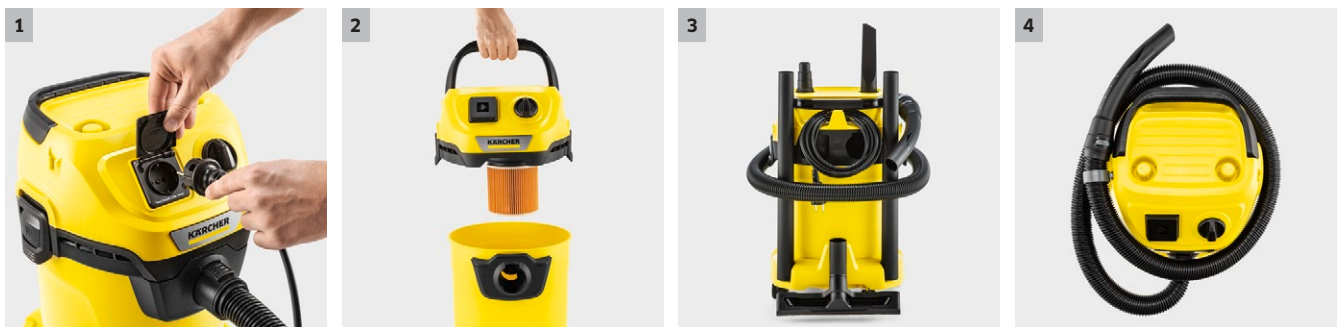




WD 3 P V-17/4/20

Perfect for the hobby workshop: The WD 3 P V-17/4/20 impresses with 17 l plastic container, 4 m cable, 2 m suction hose, single-piece cartridge filter and power outlet for working with power tools.



1 Power outlet with automatic on/off switch for working with power tools

- Dirt that is a result of planing, sawing or grinding is suctioned away directly.
- The vacuum cleaner is switched on and off automatically via the power tool.

2 Single-part cartridge filter

- For wet and dry vacuuming without additional filter replacement.
- Simple installation and removal of filter by turning without additional locking part.

3 Practical cord and accessories storage

- Space-saving, secure and easily accessible accessories storage.
- The power cable can be safely stored using the integrated cable hooks.

4 Hose storage on the device head

- The suction hose can be stored in a space-saving manner by hanging it on the device head.
- Intuitive securing mechanisms for left- and right-handed users.



WD 3 P V-17/4/20

- Compact design and accessories storage, including hose storage on the device head
- Fleece filter bag
- Practical blower function

Technical data

| | | |
|-------------------------------|--|---------------------|
| Order no. | 1.628-170.0 | |
| EAN code | 4054278656366 | |
| Current type | V / Hz | 220 - 240 / 50 - 60 |
| Energy use | W | 1000 |
| Container capacity | l | 17 |
| Container material | Plastic | |
| Colour | Device head yellow / Device bumper yellow / Container yellow | |
| Standard accessory ID | mm | 35 |
| Power cable | m | 4 |
| Weight | kg | 4.86 |
| Dimensions (L × W × H) | mm | 349 × 328 × 492 |

Equipment

| | | | | |
|--|--------------------------|----------------------------------|---|-------------------|
| Suction hose | m | 2 / with curved handle / Plastic | Intermediate parking position of the handle on the device head | ■ |
| Removable handle | | ■ | Hose storage on the device head | ■ |
| Suction tubes | piece(s) × m / mm | 2 × 0.5 / 35 / Plastic | Additional accessory storage on the device head | ■ |
| Wet and dry floor nozzle | | clips | Storage space for small parts | ■ |
| Crevice nozzle | | ■ | Folding carrying handle | ■ |
| Adaptor for connecting power tools | | ■ | Cable hook | ■ |
| Fleece filter bag | piece(s) | 1 | Parking position | ■ |
| Cartridge filter | | one-piece | Accessory storage on the device | ■ |
| Power outlet with automatic on/off switch | | ■ | Sturdy bumper | ■ |
| Rotary switch (on/off) | | ■ | Swivel castors | piece(s) 4 |
| Blower function | | ■ | | |

■ Included in the scope of supply.

WD 3 P V-17/4/20 1.628-170.0

KÄRCHER



| | | Order no. | Quantity | | | | Price | Description | |
|---|----|-------------|------------|--|--|--|-------|---|-------------------------------------|
| Filters | | | | | | | | | |
| One-piece cartridge filter KFI 3310 | 1 | 2.863-303.0 | 1 piece(s) | | | | | The cartridge filter makes it possible to vacuum without requiring an additional filter change. It is suitable for models such as the Kärcher wet and dry vacuum cleaners WD 2 Plus, WD 3, KWD 1-KWD 3 and the spray extraction cleaners SE 4001 and SE 4002. | <input checked="" type="checkbox"/> |
| Fleece filter bags KFI 357 | 2 | 2.863-314.0 | 4 piece(s) | | | | | The extremely tear-resistant fleece filter bags have been specially developed for the Kärcher wet and dry vacuum cleaners WD 2 Plus, WD 3, WD 3 Battery and KWD 1-KWD 3 as well as the spray extraction cleaners SE 4001/SE 4002. | <input type="checkbox"/> |
| Accessory kits | | | | | | | | | |
| Suction brush kit | 3 | 2.863-221.0 | 2 -part | | | | | The suction brush kit enables thorough interior car cleaning of dashboards, foot mats, upholstered surfaces, etc., and is suitable for use on all materials. For all Home & Garden wet and dry vacuum cleaners. | <input type="checkbox"/> |
| Household kit | 4 | 2.863-002.0 | 2 -part | | | | | The household kit contains a switchable dry vacuum nozzle and an upholstery nozzle. This practical accessory kit is suitable for all Kärcher Home & Garden wet and dry vacuum cleaners. | <input type="checkbox"/> |
| Vacuum kit for power tools | 5 | 2.863-112.0 | 2 -part | | | | | Flexible suction hose (1 m) including adapter for connection to the exhaust air vent of power tools (e.g. jigsaws, grinders, drills, planes, etc.), for dirt-free DIY. | <input type="checkbox"/> |
| Car interior cleaning kit | 6 | 2.863-304.0 | 6 -part | | | | | From the footwell and the seats to the car boot: the special accessory kit for Kärcher Home & Garden wet and dry vacuum cleaners ensures uninterrupted interior car cleaning. | <input type="checkbox"/> |
| Nozzles | | | | | | | | | |
| Switchable wet and dry floor nozzle with integrated parking nib | 7 | 2.863-000.0 | 1 piece(s) | | | | | Switchable wet and dry vacuum nozzle for perfect dirt intake. Easy adaptation to wet or dry dirt using foot switch. For all Kärcher Home & Garden wet and dry vacuum cleaners. | <input type="checkbox"/> |
| Extra-long crevice nozzle | 8 | 2.863-306.0 | 1 piece(s) | | | | | Completely overhauled extra-long crevice nozzle. Ideal for hard-to-reach places in the car (e.g. gaps and crevices/joints). Suitable for all Kärcher Home & Garden wet and dry vacuum cleaners. | <input type="checkbox"/> |
| Car nozzle | 9 | 2.863-316.0 | 1 piece(s) | | | | | Fast, effortless vacuuming guaranteed: With the car nozzle, you can clean textile surfaces in your car and around the house conveniently and thoroughly. | <input type="checkbox"/> |
| Special applications | | | | | | | | | |
| Drill dust catcher | 10 | 2.863-234.0 | | | | | | The new accessory for our wet and dry vacuum cleaners WD 2-6 allows safe and dust-free holes in conventional wall and ceiling surfaces. Drill dust is suctioned directly from the drill hole. | <input type="checkbox"/> |
| Suction hose extension | 11 | 2.863-305.0 | | | | | | The 3.5-m long suction hose extension is suitable for all Kärcher wet and dry vacuum cleaners from the Home & Garden range and ensures a larger operating radius and greater freedom of movement. | <input type="checkbox"/> |
| Extension suction tube | 12 | 2.863-308.0 | | | | | | Practical extension suction tube for greater operating range. The extension of the suction tube is recommended particularly for applications in areas that are difficult to access, such as high ceilings. | <input type="checkbox"/> |

■ Included in the scope of supply. □ Available accessories.