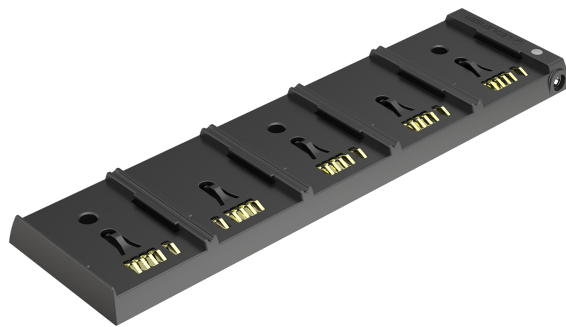




# PRODUCT DATA SHEET

5 Station Charging Panel



# 5 Station Charging Panel

## PRODUCT DESCRIPTION

The updated 5 Station Charging Panel allows safe and fast charging of up to five compatible Ledlenser lamps at the same time – especially popular with professional users, e.g. in workshops or factory halls. Thanks to the wall mounting system the lamps are always charged and at hand. Compatible Ledlenser flashlights require the appropriate Charging Station to use the system.

### USABLE WITH

EX7R, EXH8R, P5R Work, P6R Work, P7R Work, i9R, i9R iron, i9R iron CRI, iL7R, iLH8R, iW7R

### TECHNICAL DATA

Length [mm]	363
Width [mm]	101
Height [mm]	20
Weight without batteries [g]	290
Material	PC + ABS

### PACKAGING INFORMATION

Type of packaging	Box
Scope of delivery	Charging station
Item No.	502261
Customs tariff number	3926909790

### SINGLE PACKAGE

Dimensions W x H x D [cm]	10.2 x 37 x 6.8
Gross weight [g]	390
GTIN-13	4058205022927

### INNER CARTON

Unit	12
Dimensions W x D x H [cm]	42.7 x 37.7 x 21.5
Gross weight [g]	4860
GTIN-13	4058205022910

### EXPORT CARTON

Unit	24
Dimensions W x D x H [cm]	46 x 40 x 47.5
Gross weight [kg]	11.12
GTIN-13	4058205022903

## FOOTNOTES

The information pertaining to scope of delivery, appearance, performance, dimensions and weight corresponds to the information available at the time of publication. In the interest of product development, we reserve the right to change scope of delivery, appearance, design and color without prior notice. Product images may vary from the actual products and may show optional accessories which can be purchased separately. Errors and omissions excepted.