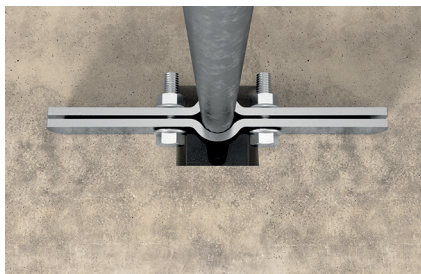


# Riser clamp RCWR

RCWR riser pipe clamps for secure fixing of vertical riser pipes with UL certification.



Floorcrossing Downpipe

2a

## Applications

- Secure fixing of vertical pipelines
- For use in dry interior areas

## Certificates



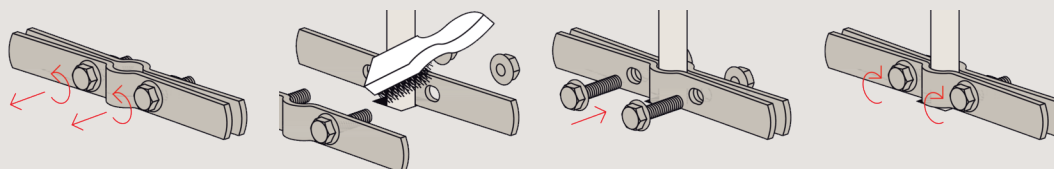
## Advantages/benefits

- Usable for all kinds of pipes
- Suitable sizes for pipe diameters of 1/2" to 8"
- Easy installation using hexagonal screws and nuts
- Safe for use thanks to UL certification

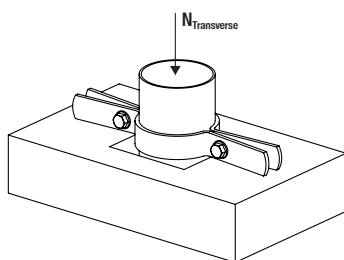
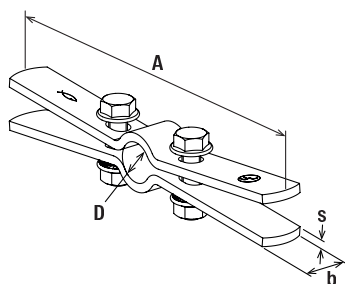
## Properties

- Material: steel Q235B
- Zinc plating: electro zinc-plated, min. 5 µm

## Installation RCWR



## Technical data



RCWR

| Item        | Item No. | UL approved | Clamping range | Width A   | Width x thick-<br>ness clamp band | Max. recom.<br>transverse<br>tensile load | Tightening<br>torque screw | Sales unit |
|-------------|----------|-------------|----------------|-----------|-----------------------------------|---|----------------------------|------------|
|             |          |             | D<br>[mm]      | A<br>[mm] | b x s<br>[mm]                     | $N_{\text{transverse}}$<br>[kN]           | [Nm]                       | [pcs]      |
| RCWR 1/2"   | 516673   | X           | 22             | 215       | 25 x 5,0                          | 3.30                                      | 25                         | 35         |
| RCWR 3/4"   | 516674   | X           | 28             | 229       | 25 x 5,0                          | 3.30                                      | 25                         | 30         |
| RCWR 1"     | 516675   | X           | 34             | 230       | 25 x 5,0                          | 3.30                                      | 25                         | 25         |
| RCWR 1 1/4" | 516676   | X           | 43             | 241       | 25 x 5,0                          | 3.30                                      | 25                         | 25         |
| RCWR 1 1/2" | 516677   | X           | 49             | 251       | 25 x 3,0                          | 3.30                                      | 25                         | 25         |
| RCWR 2"     | 516678   | X           | 62             | 262       | 30 x 5,0                          | 3.30                                      | 25                         | 25         |
| RCWR 2 1/2" | 532380   | X           | 75             | 281       | 30 x 5,0                          | 3.70                                      | 25                         | 25         |
| RCWR 3"     | 516679   | X           | 91             | 299       | 30 x 5,0                          | 4.60                                      | 25                         | 20         |
| RCWR 4"     | 516680   | X           | 116            | 329       | 38 x 6,0                          | 6.60                                      | 60                         | 12         |
| RCWR 5"     | 516681   | X           | 144            | 362       | 38 x 6,0                          | 8.90                                      | 60                         | 12         |
| RCWR 5"     | 516682   | X           | 171            | 394       | 50 x 6,0                          | 11.50                                     | 60                         | 8          |
| RCWR 8"     | 516683   | X           | 223            | 464       | 50 x 9,5                          | 18.00                                     | 100                        | 4          |