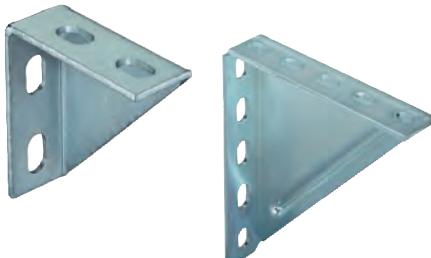


Angle bracket WK hdg.

Construction element - Angle bracket WK hdg.



Heavy drainage pipe under angle bracket



Solid frame construction

Applications

- Reinforcement and fixing of pipelines and pipe components
- For indoor and outdoor applications and in environments with high stress to components due to corrosion

Advantages/benefits

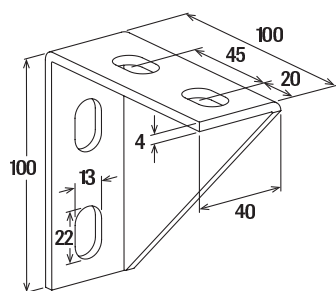
- The design of the angle bracket allows the fixing of pipe clamps or mounting channels.
- The stable angle ensures a very high level of stability and safety to the structure.
- The surface coating creates a high corrosion protection against environmental influences like humidity, water, saltwater or other corrosive substances.

Properties

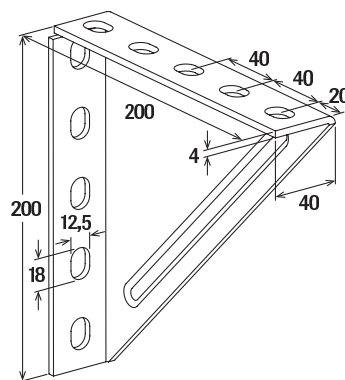
- Material: steel S235 JR (material no. 1.0037) acc. to DIN EN 10025
- Zinc plating: hot-dip galvanised, min. 45 µm, acc. to DIN EN ISO 1461

3a

Technical data



WK 100/100



WK 200/200

Item	Item No.	Sales unit
		[pcs]
WK 100/100 hdg.	538117	5
WK 200/200 hdg.	538118	5