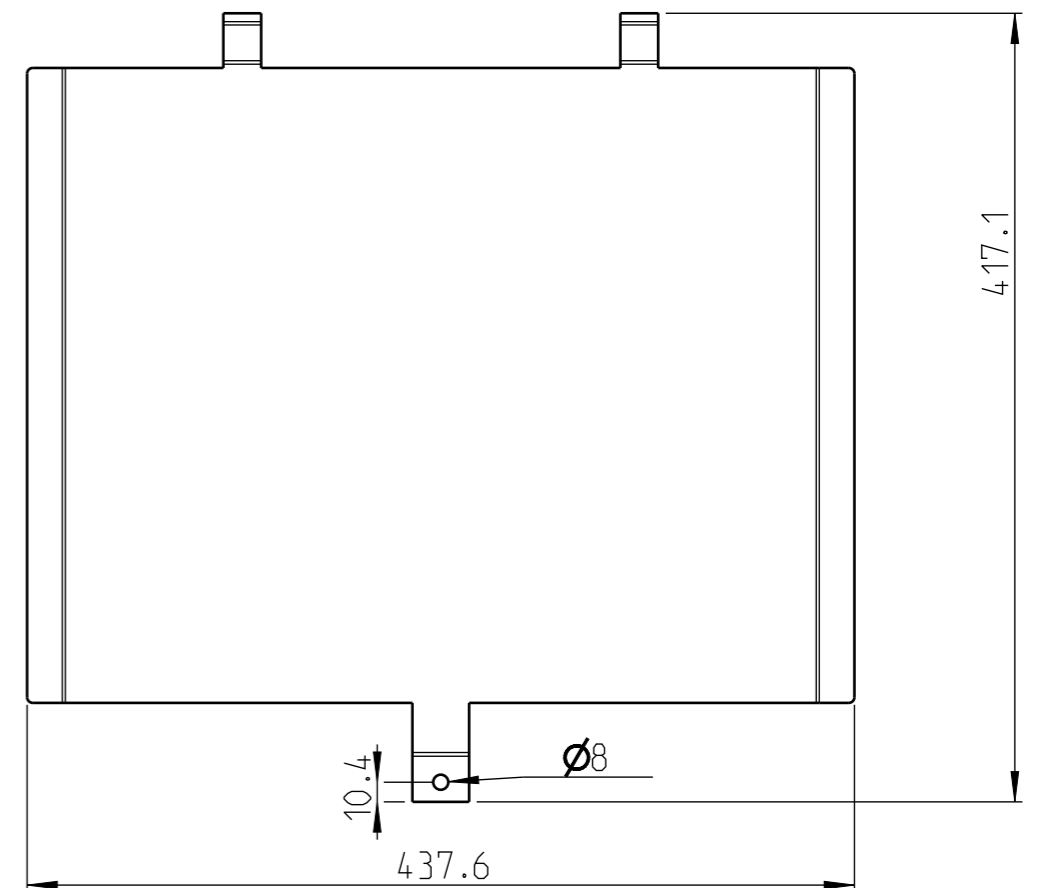



DETAIL A
SCALE 1:2

Packed separately
Marked with own label on side 2.

Surface treatment:
Use drawing 900220, Paint no 7

Assumed stamp contour, to be adjusted by producer



10054507		SKJERMPLETE SIDE				Aluzinc_DX51D_AZ		
		HEAT SHIELD SIDE						
Varenummer Partnumber	Ant. No. of	Gjenstand Partname	Pos.nr Pos.no	Tegn.nr Dwg. no	Rev.	Materiale Material	Merknad Notes	
Toleranser hvor annet ikke er angitt Tolerances where not specified:		F 602 ECO		Scale / Size		Constructed by. Date		
m NS-ISO 2768-1, 1.utg.okt1990		SKJERMPLETE SIDE		1:4/A3		Terje A 01.03.19		
-	-	-	-	SKJERMPLETE SIDE		Traced by. Date		
-	-	-	-	HEAT SHIELD SIDE		Checked by. Date		
-	-	-	-	 JOTUL Jøtul AS, P.O.box 1411, N-1602 Fredrikstad, Norway Tlf +47 69 359000 Fax +47 69 341049		Katalognr./Catalog.no.		
-	-	-	-			10054507		
-	-	-	-			Tegn_nr/drw.no	Revision	Side/Page
Rev	Dato	Rev.by	Endr.mel.			10054507	P00	1 of 2

Etikett for 12054507
Label for 12054487

150⁺⁵⁰
-10


JØTUL F 602 ECO

SKJERMPATE SIDE


HEAT SHIELD SIDE

Cat. no.: **10054507**

Lot no.: xxxxxx

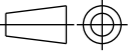



94⁺⁵⁰
-10



XXXXX10054507 |

EAN-13

10054507		SKJERMPATE SIDE				Aluzinc_DX51D_AZ			
		HEAT SHIELD SIDE							
Varenummer Partnumber	Ant. No. of	Gjenstand Partname	Pos.nr Pos.no	Tegn.nr Dwg. no	Rev.	Materiale Material	Merknad Notes		
Toleranser hvor annet ikke er angitt Tolerances where not specified:			F 602 ECO			Scale / Size	Constructed by. Date		
m NS-ISO 2768-1, 1.utg.okt1990			SKJERMPATE SIDE			1:4/A3	Terje A 01.03.19		
-	-	-	-				Traced by. Date		
-	-	-	-	HEAT SHIELD SIDE			Checked by. Date		
-	-	-	-						
-	-	-	-						
-	-	-	-			Katalognr./Catalog.no.			
-	-	-	-			10054507			
-	-	-	-			Tegn_nr/drw.no	Revision	Side/Page	
Rev	Dato	Rev.by	Endr.mel.			10054507	P00	2 of 2	
						Jøtul AS, P.O.box 1411, N-1602 Fredrikstad, Norway Tlf +47 69 359000 Fax +47 69 341049			