



**SINTEF AS by its institute
Building and Infrastructure**
P.O.Box 124 Blindern
NO-0314 Oslo, Norway
Phone +47 40 00 51 00
e-mail: certification@sintef.no



Member of
www.eota.eu

European Technical Assessment

ETA-18/0735
of 2018-12-10

General Part

Technical Assessment Body issuing the European Technical Assessment:
SINTEF

**Trade name of the construction
product**

BerryAlloc Wall&Water

**Product family to which the
construction product belongs**

Watertight Covering Kits for Wet Room floors and or
walls. Kits based on inherently watertight Boards.

Manufacturer

Alloc AS
Fiboveien 26
NO-4580 Lyngdal
Norway

Manufacturing plant(s)

Alloc AS
Fiboveien 26
NO-4580 Lyngdal
Norway

**This European Technical
Assessment contains**

6 pages including 2 Annex(es) which form an integral
part of this assessment

**This European Technical
Assessment is issued in accordance
with Regulation (EU) No 305/2011,
on the basis of**

ETAG 022, Part 3 used as EAD, 2010
Watertight Covering Kits for Wet Room floors and or
walls. Part 3-Kits based on inherently watertight
Boards.

Translations of this European Technical Assessment in other languages shall fully correspond to the original issued document and should be identified as such.

Communication of this European Technical Assessment, including transmission by electronic means, shall be in full (excepted the confidential Annex(es) referred to above). However, partial reproduction may be made, with the written consent of the issuing Technical Assessment Body. Any partial reproduction has to be identified as such.

Specific parts

1. Technical description of the product

BerryAlloc Wall&Water is a watertight wall panel system based on plywood panels coated with high-pressure laminate. The panels consist of 7 sheets of wood, glued with waterproof adhesive according to EN 636-3. The front of the panels is covered with 1,1 mm high-pressure laminate, and the backside is covered with a 0,2 mm thick transverse balancing layer.

Panel thickness is 10 mm. Standard dimensions are 2400 mm x 600 mm. The density is approx. 700 kg/m³. Tolerances are shown in table 1.

The long sides of the panels are profiled as shown in fig. 1, with an integrated locking profile. Extruded aluminium installation profiles and BerryAlloc Wall&Water Sealant, Bostik Silmax Byggfug 2620 and Casco AquaSeal are part of the system.

Table 1
Tolerances for production of Alloc bathroom panel

Property	Requirement	Test method
Length	± 1,0 mm	EN 324-1
Width	± 0,5 mm	
Thickness	± 0,4 mm	
Squareness	≤ 1,0 mm	Diagonal deviation
Edge straightness	Max 0,8 mm	EN 324-2
Lipping tongue/groove	≤ 0,15 mm	-

2. Specification of the intended use(s) in accordance with the applicable European Assessment Document (hereinafter EAD)

BerryAlloc Wall&Water can be used on walls in sanitary rooms as a waterproof lining. The panels can be fixed directly to the wall frames or battens, constructional boards, concrete-, brick-, and wooden walls, included walls below ground level.

The panels are to be used in indoor applications, where the liquid applied kit is not exposed to temperatures (i.e. temperature of structure) below 5 °C and above 40 °C, in the following uses:

- Floor and/or wall surfaces with only occasional direct exposure to water, e.g. at a good distance from shower or bathtub.
- Floors and/or walls in shower areas or around bathtubs used for a few showers daily, e.g. in ordinary dwellings, multifamily houses and hotels
- Floor and/or wall surfaces with exposure to water more frequent or of longer duration than normally anticipated in dwellings, e.g. public wet rooms, schools and sport facilities.

3. Performance of the product and references to the methods used for its assessment

3.1 Essential characteristics and their performance

Table 2
Essential characteristics and their performance

Basic works requirement		Characteristic ETAG/EAD Clause No.	Performance
BWR 1	Mechanical resistance and stability		Not relevant
BWR 2	Safety in case of fire	Reaction to fire 2.4.1	D-s2, d0 EN 13501-1
BWR 3	Hygiene, health and the environment	Release of dangerous substances 2.4.2	A written statement from the applicant has been provided and the product does not include any substances listed EG 1907/2006 REACH
		Water vapour permeability 2.4.3	s _d =15,3 m EN ISO 12592, 93-50 % RH
		Watertightness 2.4.4.1	Watertight 150 kPa / 7 days, EN 14891, A7
		Crack bridging ability 2.4.4.2	No performance assessed
		Bond strength 2.4.4.3	Category 3 > 0,5 MPa, EN 319
		Scratching resistance 2.4.4.4	Passed Annex C
		Joint bridging ability 2.4.4.5	Category 2 (watertight) Annex B
		Impermeability at sealings 2.4.4.6	Passed Annex B
		Watertightness around penetrations 2.4.4.7	Category 2 (watertight) Annex E
		Durability 2.4.6	No performance assessed
		Serviceability 2.4.7	No performance assessed
BWR 4	Safety and accessibility in use	Slipperiness 2.4.5	Not relevant
BWR 5	Protection against noise		Not relevant
BWR 6	Energy economy and heat retention		Not relevant
BWR 7	Sustainable use of natural resources		Not relevant

4. Assessment and verification of constancy of performance (hereinafter AVCP) system applied, with reference to its legal base

According to the decision 2003/655/EC - Commission decision of date 12 September 2003, published in the Official Journal of the European Union (OJEU) L231/12 of 17/09/2003, of the European Commission, the system of assessment and verification of constancy of performance (see Annex V to the regulation (EU) No 305/2011) is 2+.

5. Technical details necessary for the implementation of the AVCP system, as provided for in the applicable EAD

Technical details necessary for the implementation of the AVCP system are laid down in the control plan deposited at SINTEF.

Issued in Oslo on 2018-12-10

By

SINTEF



Hans Boye Skogstad
Approval Manager

Annex 1

Installation

BerryAlloc Wall&Water are installed in accordance with manufacturers installation guide.

Storage and conditioning

BerryAlloc Wall&Water shall be stored under dry conditions on a levelled substrate, front side to front side for surface protection. The panels shall be stored at room temperature for 2 days prior to installation.

Installation on timber framework

The studs spacing shall be max. c/c 0,6 m, and horizontal battens shall have spacing max. c/c 0,8 m. Extra noggings are required when installing heavy objects i.e. washstand.

The panels shall be fixed to the studs/battens by screws or by staples, spacing c/c 200 mm, as shown in fig. 1. Place no nails or screws closer than 20 mm from the top or bottom of the panel. Power tools must be used with caution not to damage the panels.

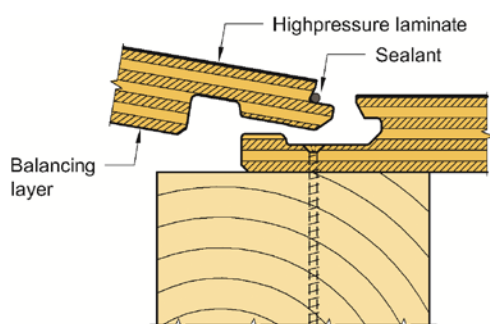


Fig. 1
Mounting principle for BerryAlloc Wall&Water.

Installation on tile and concrete

When installing on concrete or brick walls the panels shall be fixed to vertical and horizontal battens with dimensions min. 23 mm x 48 mm. The battens shall be installed with the wide side facing the wall. Distance between battens shall be as described above for frame work walls.

Optionally, base-, corner- and jointprofile can be fixed directly to the underlaying base using adhesive Bostik Maxi Bond. Panels are then mounted by horizontal strings of adhesive c/c 600 mm, and a screw at the topp and bottom. This method requires that the underlaying base is dry ($R_f < 85\%$ / $CM < 2\%$), permitts adhesion and in compliance with required direction- and surface deviations. For instruction, see BerryAlloc document La-1710-1EN.

Wet areas

All tongue/groove- and profile joints in wet areas shall be sealed with BerryAlloc Wall&Water Sealant, Bostik Silmax Byggfug 2620 eller Casco AquaSeal. Waterproofing base profile are performed as illustrated in fig. 2. Ample quantity sealant shall be applied so exess mass seep out in the full lenght of the joining panels/profiles as they are pressed towards eachother. Excess sealant is to be wiped of immediately. Assembly and sealing, using products listed in Table 3, must be performed according to manufacturer's instructions.

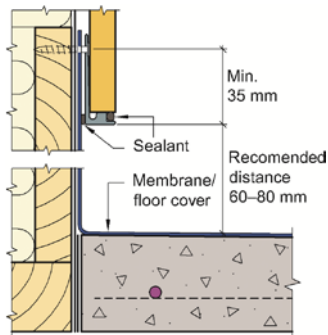


Fig. 2
Waterproofing base profile.

Table 3
Sealants for use with BerryAlloc Wall&Water

Sealant
BerryAlloc Wall&Water Sealant
Bostik Silmax Byggfug 2620
Casco AquaSeal

Penetration in wet areas

Waterproof installation of wall boxes must follow one of the methods:

- Collars that are delivered with the wall box are glued to the surrounding panel using BerryAlloc Wall&Water Sealant, Bostik Silmax Byggfug 2620 or Casco AquaSeal. See fig. 3.
- Wallboxes are installed using tightening ring delivered with the wallbox. See fig. 4.

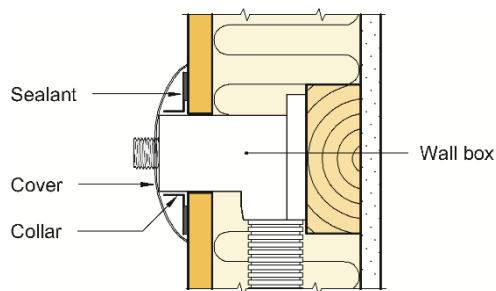


Fig. 3
Pipe penetration with collar glued to the surrounding panel.

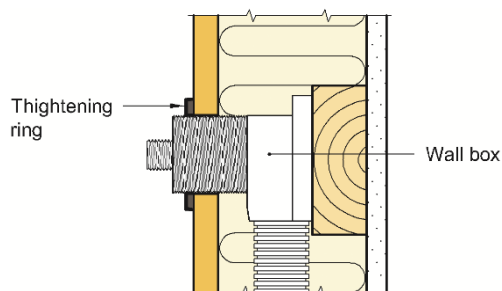


Fig. 4
Pipe penetration with tightening ring.

Cleaning/maintenance

BerryAlloc Wall&Water can be cleaned with a wet cloth or a mild detergent without abrasives.