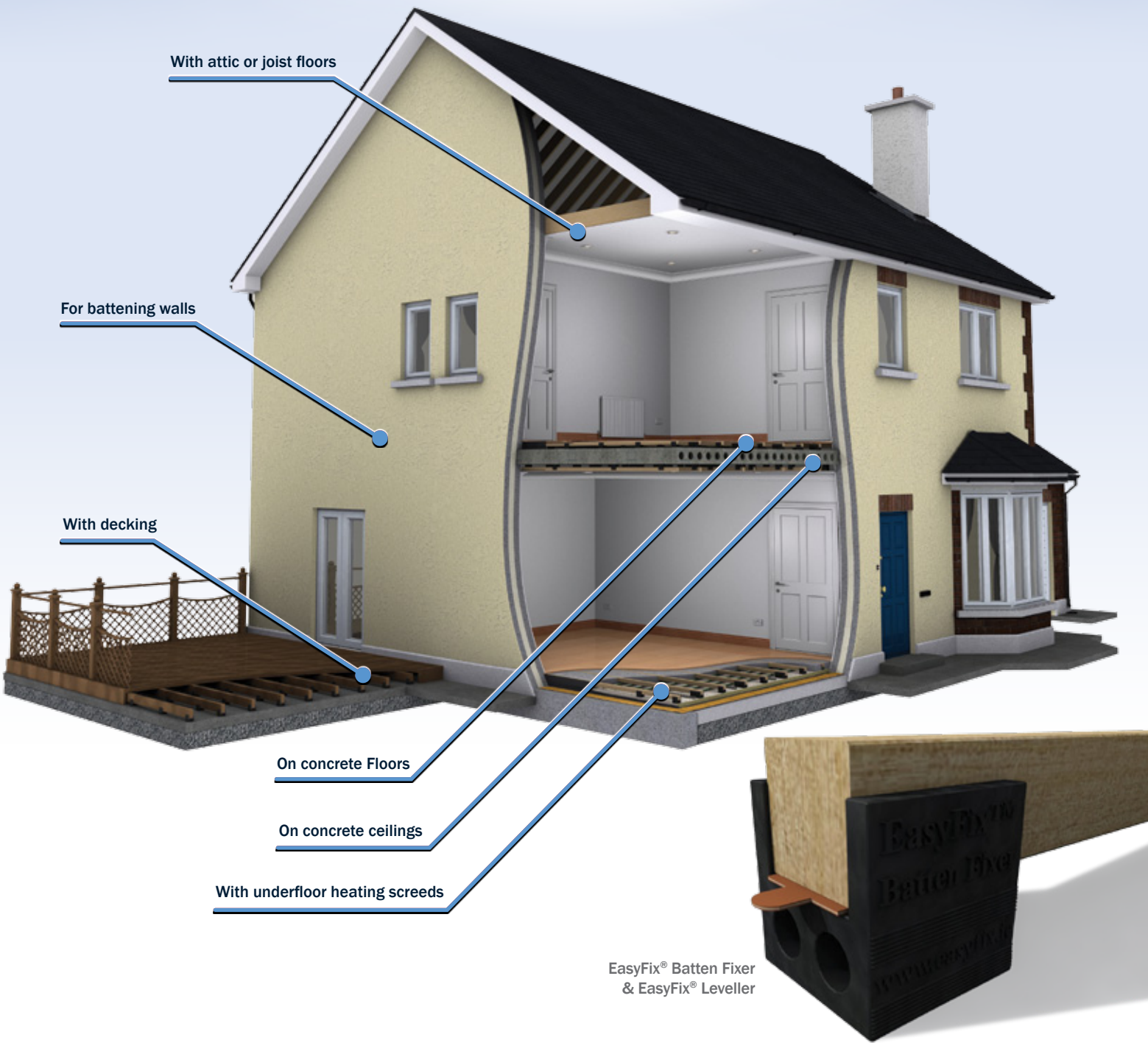




Innovation. Comfort. Durability.



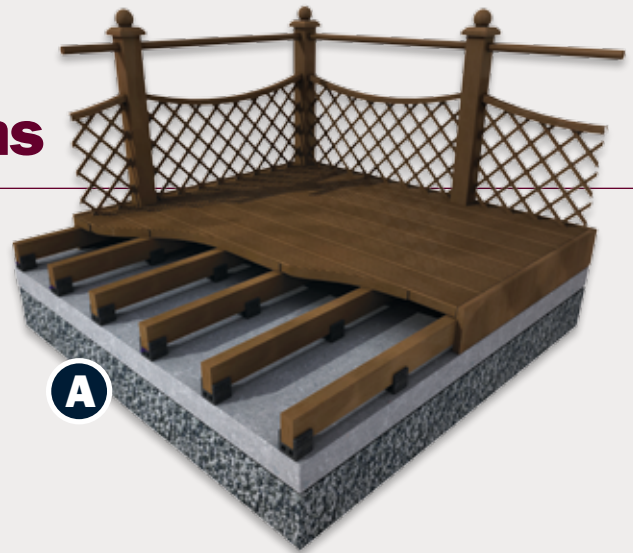
Batten and Acoustic Systems

Buy once, Buy Right, Buy Easyfix

EasyFix® Batten and Acoustic Decking Systems

A Decking System

- Ideal for use on flat roofs, concrete or tarmac etc.
- Easily levelled using EasyFix® Levellers.
- Creates a moisture barrier between deck and ground. Keeps timber supports off ground which helps prevent rotting.
- Allow for around 8 batten fixers per m² (depends on weight of deck).



EasyFix® Batten and Acoustic Floor Systems

B Flooring System on Concrete & Joisted Floors. Use *instead of traditional double battening or non-structural screed.*

ADVANTAGES

- Batten a floor in half the time.
- Labour saving D.I.Y.
- No messy wet screed or costly drying out times.
- Allows services to pass easily (or to add new services in future).
- Floor is floating so no need for drilling & nailing.
- Helps to reduce & protect against moisture.
- EasyFix® levellers used to level floors. Available in various sizes.
- 'Squeaks and Creaks' eliminated!

TECHNICAL INFORMATION

- Reduces impact noise by up to 24dB.*
- Space fixers and timber battens at the same centres as traditional battening: 400x400mm.
- Generally used with 50x50mm battens.
- Plywood is generally used on top of battens but timber floors have been laid directly onto battens.
- Available in two sizes: 38mm and 10mm.
- Allow for around 8 batten fixers per m²



C Floor Batten System within Timber Joists or Attics

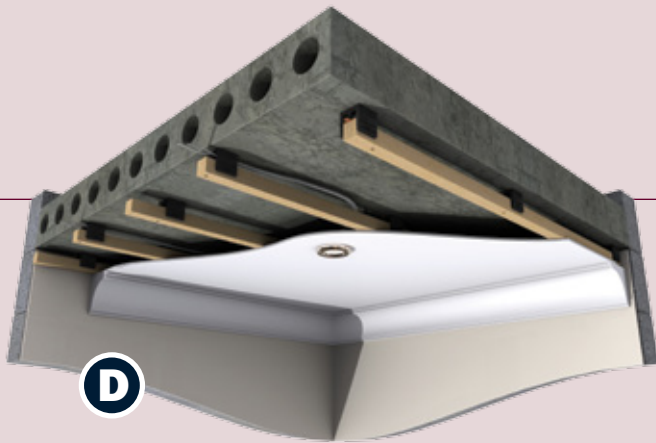
- Using the floor battens system on joist floor gives all the advantages as above but the main advantages are the significant reduction in impact noise* and the capability to carry services without having to notch and weaken the support joists.
- Lay battens onto plywood as shown in graphic opposite.



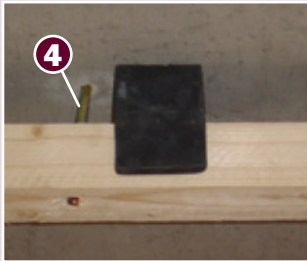
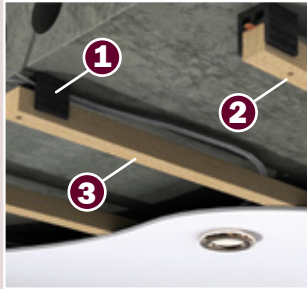
Please note all acoustic testing surpasses current building regulations and was carried out by independent acoustic engineers.

Buy once, Buy right,
Buy EasyFix

Ceiling and Wall Batten System



1. Batten Fixer being used as a spacer and leveller for ceiling.
2. Express nail holding batten in place one side of batten fixer.
3. 50x50mm batten or deeper if necessary.
4. Express nail holding batten in place, one side of batten fixer.



D

Ceiling system with concrete floors.
Use *instead of traditional battening of concrete/hollowcore ceilings.*

ADVANTAGES

- Batten a ceiling in at least half the time.*
- Battens fixed in place using a standard express nail close to fixer (see pictures opposite).
- 'One pass' system!
- Similar material price as traditional battening and around one third the price of metal systems* (significant labour saving costs).
- No cross batten to get in way of recess lights and ample room for carry services or to add services.
- Holes in fixers may also be used to carry wires/services.

TECHNICAL INFORMATION

- Will help with acoustics within a building (less reverb).
- Battens fixed in place using a standard express nail, one side of fixer (see pictures opposite).
- Service up to 108mm thick (e.g. ducting) can be carried with 50mm batten fixers or 133mm with 75mm batten fixers.
- Same spacing as standard ceiling double battening allow 400mm between battens and 700-900mm between fixers.

E

EasyFix® Wall Batten System
Use *in a similar way to above ceiling system.*

- Allows ample room for services and insulation.
- Offers better acoustic properties than standard double battening.
- Ample Room for services underneath and between fixers.
- Wall can easily be levelled by using levellers or compressing fixers.
- Foil back insulation, fiber wool or spray on insulation can be easily used with this system.

Specialist acoustic wall batten system is available to comply with new building regulations.
Contact EasyFix® for more details.

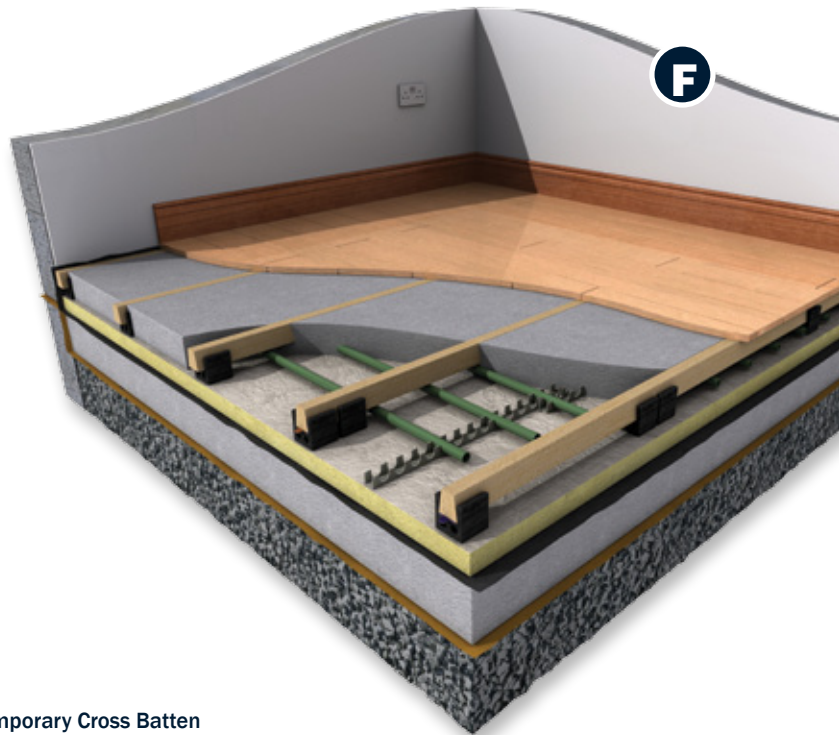


**Labour saving and costing calculations have been compared from various sites using these EasyFix® Systems and traditional systems.*

EasyFix® Underfloor System

F The Solution to fixing timber floors for underfloor heating

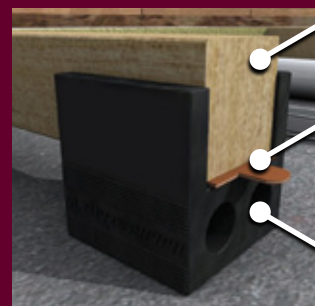
- System to contain battens within the underfloor screed in order to accommodate nailing of timber floor.
- Greatly reduces the chance of timber warping.
- Developed in conjunction with underfloor heating specialists.
- No risk of damaged or pierced piping/insulation.
- Lay battens easily onto insulation.
- Use a temporary cross batten to keep battens & fixers in place until screed is poured.
- Batten Fixers give a bridge effect so you can get an even transfer of heat.
- Allow for around 8 Fixers per m².



Temporary Cross Batten



Fixer Set Up



Timber Batten

Levellers inserted when needed

38mm Batten Fixer - 10mm also available

PRODUCT INFORMATION

- EasyFix® Batten Fixers are available in two base sizes: 38mm & 10mm.
- Levellers come in one size, 3mm. Generally allow 2 levellers for every Batten Fixer used.
- EasyFix® Batten Systems have been used on everything from apartments, housing developments, gym floors, private houses, hotels, timber framed houses and decking.
- They come highly recommended from major flooring & construction companies.
- EasyFix® Batten Systems are developed & manufactured by EasyFix® Products, Ballinasloe, Co. Galway.



EasyFix Rubber Products Ltd., Persse Business Park, Ballinasloe, County Galway, Ireland
 Phone : +353 (0)90 96 43344 • Fax : +353 (0)90 96 43345 • Email : info@easyfix.ie
 Lo Call UK and NI: 0845 0896040 • Lo Call Ireland: 1850 850750

www.easyfix.ie