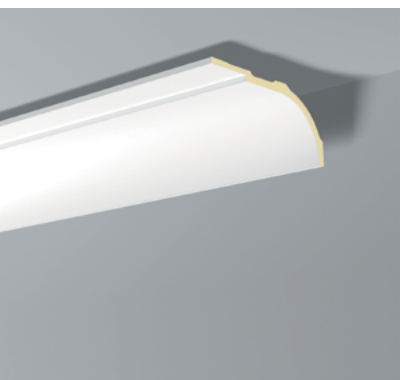
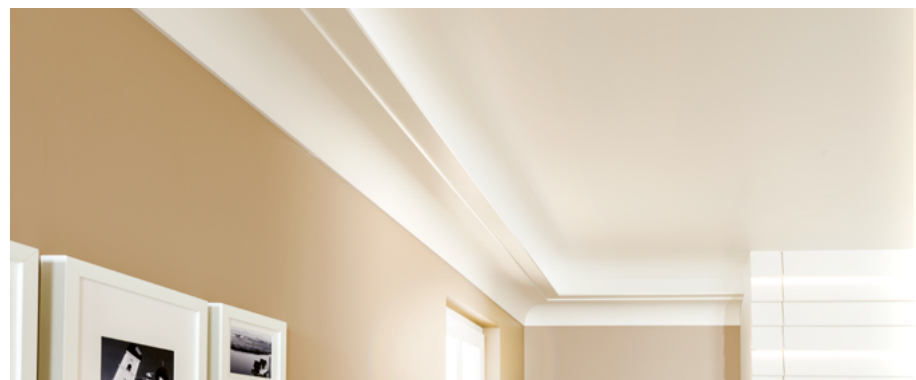


# ARSTYL® Mouldings, Pilasters, Ceiling Medallions and Columns



ARSTYL®



## 1. MATERIAL

Constituent material	High-density, yellow, rigid polyurethane foam, 100% without CFC.
Density	Approx. 200 kg/m <sup>3</sup>
Installation temperatures	+10°C to +30°C (ideal +15°C to +25°C)
Temperatures resistance	Max. +70°C
Surface hardness (Shore D)	Approx. 25 (average value) according to norm DIN 53505/ISO 868

## 2. SPECIFIC PROPERTIES

### Factory Finish:

Matt white acrylic primer to be painted.

### Visible surfaces:

The manufacturing technique guarantees a hard and smooth surface, with sharp edges, and the exact reproduction of the motif.

### Gluing surfaces:

Slanted surfaces (2°) for easier fitting and milled for better glue adhesion.

### Dimensions:

Length of a moulding: 200 mm / 6.56 ft (tolerance ± 5 mm).

Ceiling Medallions up to 965 mm / 3' 2" in diameter.

Length of a pilaster: 2020 mm / 6' 7 1/2".

Columns diameter: 200, 250 and 300 mm.

Columns length: 2,5 and 3 m.

Cross section of a profile: depending on the model (Tolerance: +-5%)



**NMC sa** reserves the right to update the product line or its technical features to the state-of-the-art technology anytime and without previous announcement. All given information is to the best of our knowledge. If you have any questions concerning technical details please contact the **NMC sa** information service. Any partial reproduction or reprint shall require our explicit approval.

### NMC sa

Gert-Noël-Strasse – B-4731 Eynatten

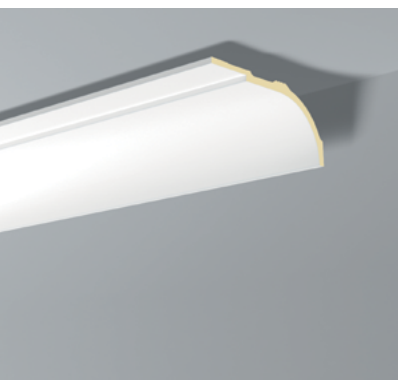
☎ +32 87 85 85 00 – 📠 +32 87 85 85 11

info@nmc.eu

*we will succeed together*



# ARSTYL® Mouldings, Pilasters, Ceiling Medallions and Columns



ARSTYL®

## 3. USE

### Storage and installation conditions:

Flat, sheltered from the sun and from humidity. Storage temperature +10°C / +25°C, rel. Humidity 45% to 65%. Must be handled carefully. For the best result, the product will be fitted and stored in conditions close to those of final use. Fitting on a wet backing surface (fresh plaster) and in forced drying conditions (heat gun, dehumidifier, exceptionally high temperature) are to be ruled out. The installation instructions must be followed.

### Laying surface:

The following laying surfaces are suitable: indoor plastered or papered surfaces, coated plaster. Surfaces must be clean, dry, free from dust, degreased and flat; rough down if necessary. If the product is to be applied to particular backing surfaces, please consult our technical department.

### Tools:

HDPS-PU saw and NMC VARIO, VARIO PLUS or ART DECO mitre-box.

### Adhesive and joints:

Glue: ADEFIX®

Coving edges and joints with height/projection >8 cm : ADEFIX® PLUS

One-sided mounting: ADEFIX® PLUS

Filler and jointing material : ADEFIX®

Width of joints: 3mm

Cleaning product for ADEFIX® (before hardening) : Water

Cleaning product for ADEFIX® PLUS (before hardening) : turpentine

After hardening: mechanically

### Finishes:

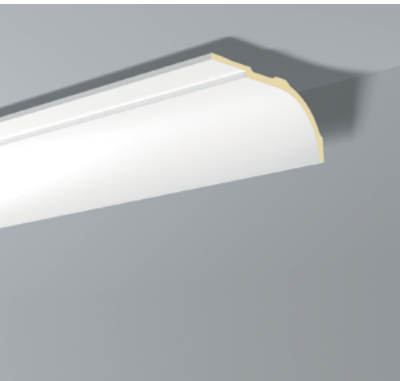
ARSTYL® mouldings and roses can take all paints thanks to the coat of primer applied at the factory, except for silicate products.

## 4. SPECIAL INSTRUCTIONS

### Regulation concerning dangerous substances:

ARSTYL® polyurethane products are to be classified neither under "very toxic" nor under "toxic", according to the regulations concerning dangerous substances.

# ARSTYL® Mouldings, Pilasters, Ceiling Medallions and Columns



ARSTYL®

## Important notes:

The elements are strictly decorative to the exclusion of any structural function; they are not designed to withstand loads and should be isolated by flexible joints from elements likely to convey strains or movements.

Physical properties of the products and the laying surfaces cause different natural expansion coefficients, and induce that the joint and the glue move or that (fine) hair cracks can be seen. This fact does not constitute grounds for complaint.

These products are flexible. However, excessive pressure may cause the product to snap. Please note that a break may lead to the projection of debris.