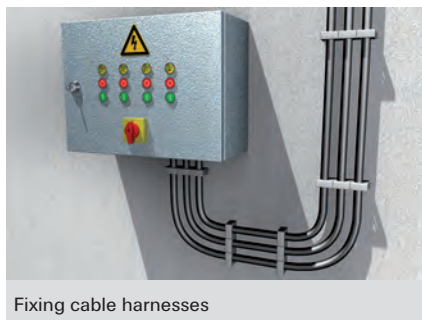


## The flexible cable clamp for various diameters



Fixing cable harnesses



Cable fixing

### BUILDING MATERIALS

#### When using Hammerfix N:

- Concrete
- Vertically perforated brick
- Hollow blocks made from lightweight concrete
- Perforated sand-lime brick
- Solid sand-lime brick
- Building brick
- Natural stone
- Aerated concrete
- Solid panel made from gypsum
- Solid brick made from lightweight concrete

### CHARACTERISTICS



### ADVANTAGES

- With its elastic spring tabs, the saddle clip SCH can bear different cable diameters. This increases flexibility and reduces the number of products required.
- Additional clips can be added to the sides of a pre-fixed clip. This saves installation time and materials.
- The long-lasting nylon material is halogen- and silicone-free. It can be used all year round, including during a frost. This ensures a high level of safety.

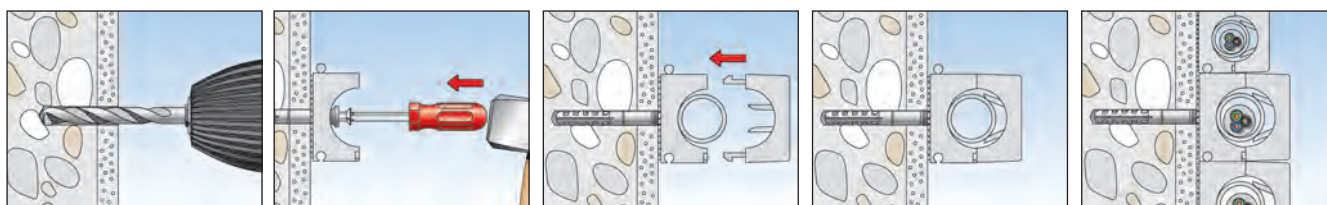
### APPLICATIONS

#### For fixing of:

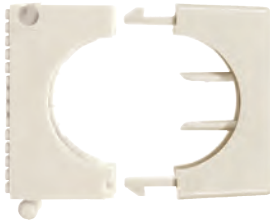
- Electric cables
- Flexible and rigid plastic insulating pipes

### FUNCTIONALITY

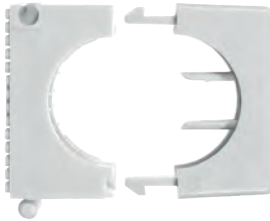
- The clamp SCH is adapted to suit the fixture using N 5 Hammerfixes.
- The Hammerfix N is expanded when the nail is driven in, and holds by friction in the drill hole.
- The cables or pipes are then laid in the clamp SCH and fixed by inserting the locking latch.
- The internal tabs adapt to fit various cable or pipe diameters.
- Temperature resistance once installed from -40 °C to +80 °C.



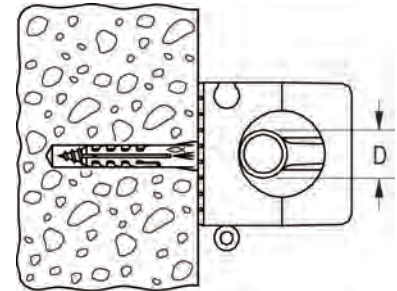
## TECHNICAL DATA



Saddle **SCH**, colour: Nylon transparent



Saddle **SCH**, colour: grey RAL 7035



	Art.-No.		Clamping range	Dimension of insulated pipes	Sales unit	
	Grey RAL 7035	Nylon transparent	D [mm]		[pcs]	
Item						
<b>SCH 812</b>	<b>068012</b>	<b>060012</b>	8 - 12	6 x 1 - 8 x 1	100	
<b>SCH 1216</b>	<b>068016</b>	<b>060016</b>	12 - 16	10 x 1 - 12 x 1	50	
<b>SCH 1619</b>	<b>068019</b>	<b>060019</b>	16 - 19	—	50	
<b>SCH 1623</b>	<b>068023</b>	<b>060023</b>	16 - 23	15 x 1 - 18 x 1	50	
<b>SCH 2332</b>	<b>068032</b>	<b>060032</b>	23 - 32	22 x 1 - 22 x 1,5	25	
<b>SCH 3242</b>	—	<b>060042</b>	32 - 42	22 x 1 - 22 x 1,5	25	