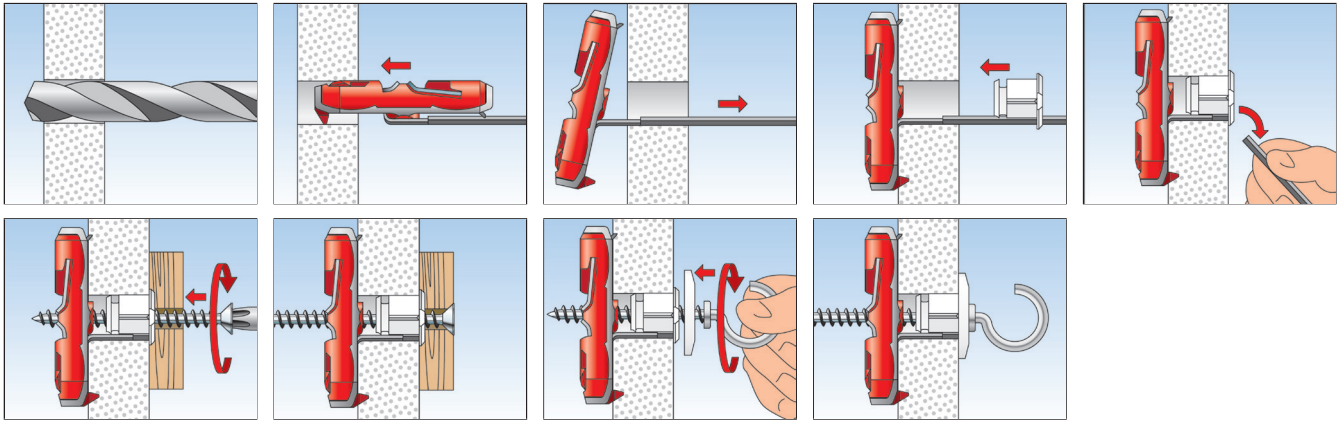
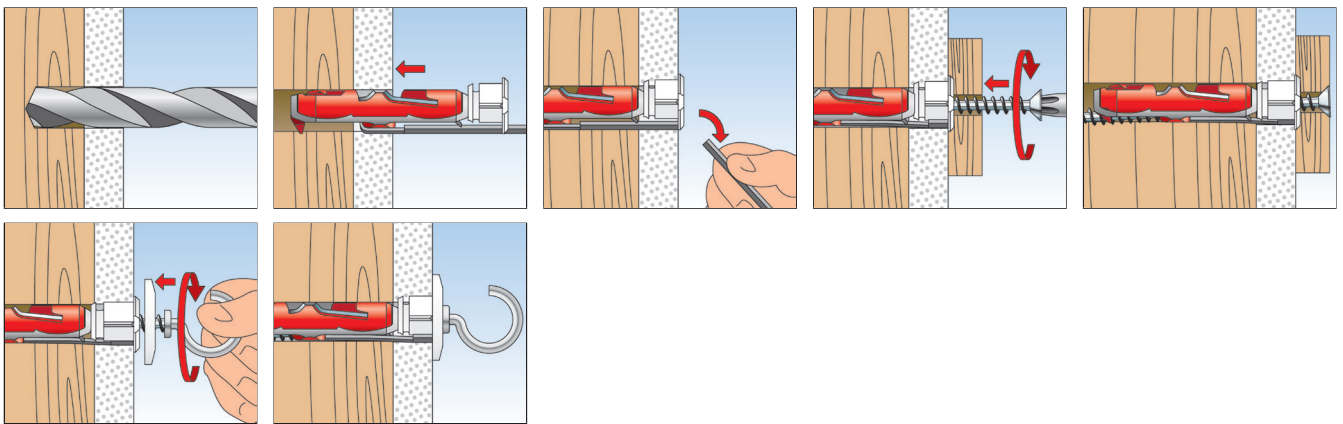


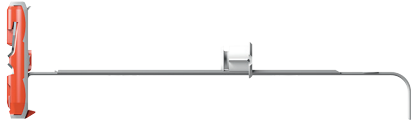
## INSTALLATION BOARD MATERIAL



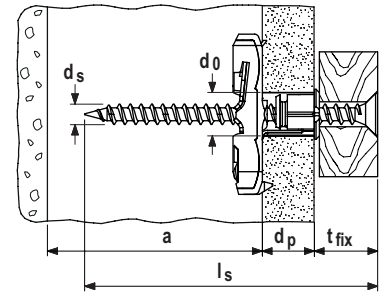
## INSTALLATION SOLID MATERIAL



**TECHNICAL DATA BOARD MATERIAL**



Nylon toggle **DUOTEC**



Item	Art.-No.	Drill hole diameter $d_0$ [mm]	Min. panel thickness $d_p$ [mm]	Max. panel thickness $d_p$ [mm]	Min. cavity depth $a$ [mm]	Screw diameter $d_s$ [mm]	Screw length $l_s$ [mm]	Sales unit [pcs]
<b>DUOTEC</b>	<b>537258</b>	10	9,5	55	40	4,5 - 5	$\geq d_p + t_{fix} + 20$	50
<b>DUOTEC S</b>	<b>537259</b>	10	9,5	55	40	5,0	70	25
<b>DUOTEC S PH</b>	<b>539025</b>	10	9,5	55	40	5,0	70	25