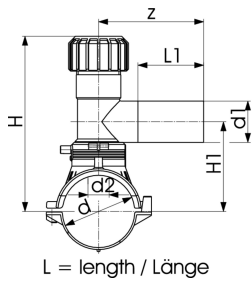


Anborringsklammer med 360°roterbart utlop

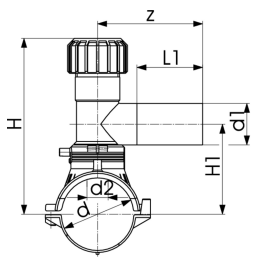
- PE100 SDR 11 (ISO S5)
- 10 bar gass / 16 bar vann
- Med integrert kniv for anborring under trykk
- Komplet med underdel
- 4mm tilkoblingspinner
- Sveiseindikatorer
- Med langt avstikk
- O-Ring tetning i mutterkappen
- d355-400mm. Not suitable for pipes if wall thickness is larger than SDR17 pipes.
- Delivery without lower part for assembling as Top Load with tool no. 799.350.477; angle adaptor (799.350.340) for fusion cable required
- *Innstopt underdel

| d (mm) | d1 (mm) | TopLoad | Kode | RSK | SP | Vekt (kg) |
|-----------|------------|---------|-------------|-----------|----|--------------|
| 63 | 20 | | 193 131 402 | | 1 | 0,697 |
| 63 | 25 | | 193 131 403 | | 1 | 0,637 |
| 63 | 32 | | 193 131 404 | 242 28 37 | 1 | 0,701 |
| 63 | 40 | | 193 131 405 | | 1 | 0,718 |
| 63 | 63 | | 193 131 437 | 242 28 38 | 1 | 1,426 |
| 75 | 20 | | 193 131 442 | | 1 | 0,831 |
| 75 | 25 | | 193 131 443 | | 1 | 0,830 |
| 75 | 32 | | 193 131 444 | 242 28 39 | 1 | 0,812 |
| 75 | 40 | | 193 131 445 | | 1 | 0,849 |
| 75 | 63 | | 193 131 447 | 242 28 40 | 1 | 1,549 |
| 90 | 20 | | 193 131 452 | | 1 | 0,794 |
| 90 | 25 | | 193 131 453 | | 1 | 0,790 |
| 90 | 32 | | 193 131 454 | 242 28 41 | 1 | 0,770 |
| 90 | 40 | | 193 131 455 | | 1 | 0,811 |
| 90 | 63 | | 193 131 457 | 242 28 42 | 1 | 1,494 |
| * | 110 | 20 | 193 131 462 | | 1 | 0,826 |
| * | 110 | 25 | 193 131 463 | | 1 | 0,808 |
| * | 110 | 32 | 193 131 464 | 242 28 43 | 1 | 0,831 |
| * | 110 | 40 | 193 131 465 | | 1 | 0,805 |
| * | 110 | 63 | 193 131 467 | 242 28 44 | 1 | 1,097 |
| | 125 | 20 | 193 131 472 | | 1 | 0,880 |
| | 125 | 25 | 193 131 473 | | 1 | 0,878 |
| | 125 | 32 | 193 131 474 | 242 28 45 | 1 | 0,878 |
| | 125 | 40 | 193 131 475 | | 1 | 0,874 |
| | 125 | 63 | 193 131 477 | 242 28 46 | 1 | 1,184 |
| | 140 | 20 | 193 131 482 | | 1 | 0,887 |
| | 140 | 25 | 193 131 483 | | 1 | 0,874 |
| | 140 | 32 | 193 131 484 | | 1 | 0,894 |
| | 140 | 40 | 193 131 485 | | 1 | 0,920 |
| | 140 | 63 | 193 131 487 | | 1 | 1,180 |
| * | 160 | 20 | 193 131 492 | | 1 | 0,916 |
| * | 160 | 25 | 193 131 493 | | 1 | 0,912 |
| * | 160 | 32 | 193 131 494 | 242 28 47 | 1 | 0,915 |
| * | 160 | 40 | 193 131 495 | | 1 | 0,936 |
| * | 160 | 63 | 193 131 497 | 242 28 48 | 1 | 1,221 |
| | 180 | 20 | 193 131 502 | | 1 | 0,994 |
| | 180 | 25 | 193 131 503 | | 1 | 1,001 |
| | 180 | 32 | 193 131 504 | 242 28 49 | 1 | 0,957 |
| | 180 | 40 | 193 131 505 | | 1 | 1,007 |
| | 180 | 63 | 193 131 507 | 242 28 50 | 1 | 1,587 |
| | 200 | 20 | 193 131 512 | | 1 | 1,015 |
| | 200 | 25 | 193 131 513 | | 1 | 1,015 |
| | 200 | 32 | 193 131 514 | 242 28 51 | 1 | 0,985 |
| | 200 | 40 | 193 131 515 | | 1 | 1,024 |
| | 200 | 63 | 193 131 517 | 242 28 52 | 1 | 1,290 |
| | 225 | 20 | 193 131 522 | | 1 | 1,016 |



| d (mm) | d1 (mm) | TopLoad | Kode | RSK | SP | Vekt (kg) |
|-----------|------------|---------|--------------------|------------------|----|--------------|
| 225 | 25 | | 193 131 523 | | 1 | 1,025 |
| 225 | 32 | | 193 131 524 | 242 28 53 | 1 | 1,019 |
| 225 | 40 | | 193 131 525 | | 1 | 1,029 |
| 225 | 63 | | 193 131 527 | 242 28 54 | 1 | 1,738 |
| 250 | 20 | | 193 131 532 | | 1 | 1,025 |
| 250 | 25 | | 193 131 533 | | 1 | 1,026 |
| 250 | 32 | | 193 131 534 | 242 30 43 | 1 | 0,996 |
| 250 | 40 | | 193 131 535 | | 1 | 1,008 |
| 250 | 63 | | 193 131 537 | 242 30 44 | 1 | 1,733 |
| 280 | 63 | yes | 193 131 547 | 242 30 45 | 1 | 1,478 |
| 315-355 | 63 | yes | 193 131 557 | 242 30 46 | 1 | 1,481 |
| 400 | 63 | yes | 193 131 577 | 242 63 56 | 1 | 1,473 |

| d2 (mm) | H (mm) | H1 (mm) | L (mm) | L1 (mm) | z (mm) | |
|------------|-----------|------------|-----------|------------|-----------|-----|
| 32 | 186 | 108 | 165 | 71 | 130 | |
| 32 | 186 | 108 | 165 | 71 | 130 | |
| 32 | 186 | 108 | 165 | 76 | 130 | |
| 32 | 186 | 108 | 165 | 81 | 137 | |
| 32 | 134 | 112 | 165 | 100 | 160 | |
| 32 | 191 | 113 | 165 | 71 | 130 | |
| 32 | 191 | 113 | 165 | 71 | 130 | |
| 32 | 191 | 113 | 165 | 76 | 130 | |
| 32 | 191 | 113 | 165 | 81 | 137 | |
| 32 | 240 | 118 | 165 | 100 | 160 | |
| 32 | 199 | 121 | 165 | 71 | 130 | |
| 32 | 199 | 121 | 165 | 71 | 130 | |
| 32 | 199 | 121 | 165 | 76 | 130 | |
| 32 | 199 | 121 | 165 | 81 | 137 | |
| 32 | 248 | 126 | 165 | 100 | 160 | |
| * | 32 | 209 | 131 | 182 | 71 | 130 |
| * | 32 | 209 | 131 | 182 | 71 | 130 |
| * | 32 | 209 | 131 | 182 | 76 | 130 |
| * | 32 | 209 | 131 | 182 | 81 | 137 |
| * | 35 | 258 | 136 | 182 | 100 | 160 |
| 32 | 216 | 138 | 165 | 71 | 130 | |
| 32 | 216 | 138 | 165 | 71 | 130 | |
| 32 | 216 | 138 | 165 | 76 | 130 | |
| 32 | 216 | 138 | 165 | 81 | 137 | |
| 35 | 265 | 143 | 165 | 100 | 160 | |
| 32 | 233 | 146 | 165 | 71 | 130 | |
| 32 | 233 | 146 | 165 | 71 | 130 | |
| 32 | 233 | 146 | 165 | 76 | 130 | |
| 32 | 233 | 146 | 165 | 81 | 137 | |
| 35 | 273 | 151 | 165 | 100 | 160 | |
| * | 32 | 243 | 156 | 182 | 71 | 130 |
| * | 32 | 243 | 156 | 182 | 71 | 130 |
| * | 32 | 243 | 156 | 182 | 76 | 130 |
| * | 32 | 243 | 156 | 182 | 81 | 137 |
| * | 35 | 283 | 161 | 182 | 100 | 160 |
| 32 | 244 | 166 | 165 | 71 | 130 | |
| 32 | 244 | 166 | 165 | 71 | 130 | |
| 32 | 244 | 166 | 165 | 76 | 130 | |
| 32 | 244 | 166 | 165 | 81 | 137 | |
| 35 | 293 | 171 | 165 | 100 | 160 | |
| 32 | 254 | 176 | 165 | 71 | 130 | |
| 32 | 254 | 176 | 165 | 71 | 130 | |
| 32 | 254 | 176 | 165 | 76 | 130 | |
| 32 | 254 | 176 | 165 | 81 | 137 | |



L = length / Lange

| | d2 | H | H1 | L | L1 | z |
|--|-----------|----------|-----------|----------|-----------|----------|
| | (mm) | (mm) | (mm) | (mm) | (mm) | (mm) |
| | 35 | 303 | 181 | 165 | 100 | 160 |
| | 32 | 266 | 188 | 165 | 71 | 130 |
| | 32 | 266 | 188 | 165 | 71 | 130 |
| | 32 | 266 | 188 | 165 | 76 | 130 |
| | 32 | 266 | 188 | 165 | 81 | 137 |
| | 35 | 315 | 193 | 165 | 100 | 160 |
| | 32 | 279 | 201 | 165 | 76 | 130 |
| | 32 | 279 | 201 | 165 | 76 | 130 |
| | 32 | 279 | 201 | 165 | 76 | 130 |
| | 32 | 279 | 201 | 165 | 81 | 137 |
| | 35 | 328 | 206 | 165 | 100 | 160 |
| | 35 | 343 | 206 | 165 | 100 | 160 |
| | 35 | 381 | 206 | 165 | 100 | 160 |
| | 35 | 403 | 206 | 165 | 100 | 160 |

De tekniske data er uforpliktende. De er hverken uttrykk for garanterte egenskaper, funksjoner eller for garantert holdbarhet. Rett til endringer forbeholdes. Vare generelle salgsbetingelser er gjeldene.

Georg Fischer Piping Systems Ltd, Postfach, CH-8201 Schaffhausen/Switzerland

Phone +41 -(0)52-631 1111

e-mail: info.ps@georgfischer.com

Internet: <http://www.gfps.com>