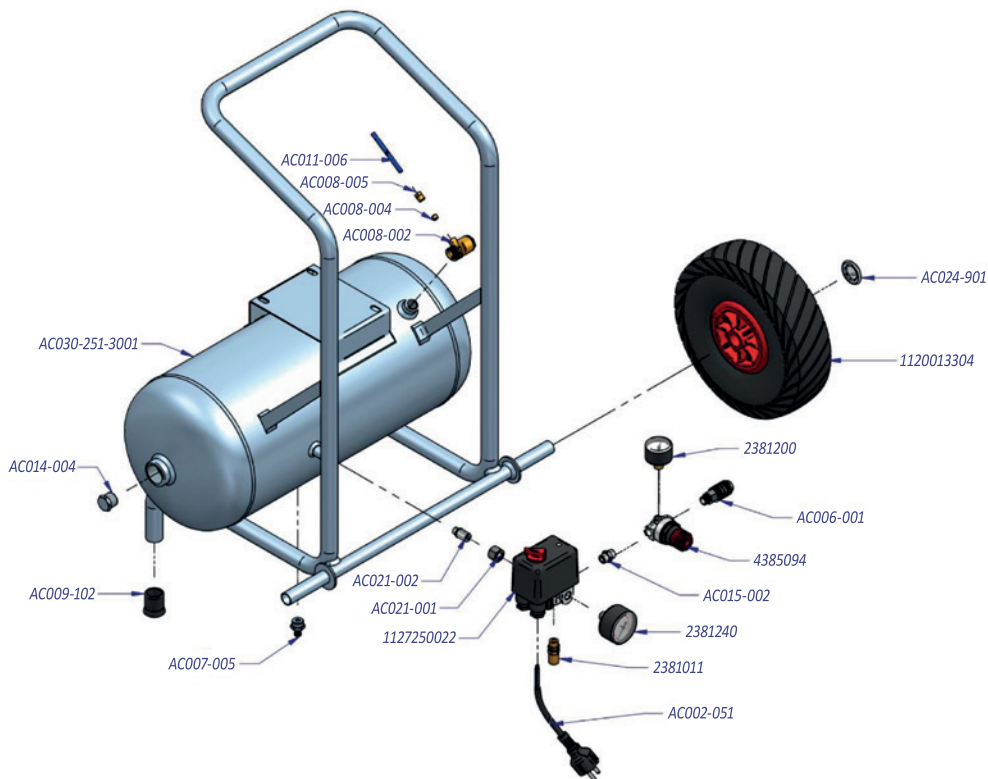




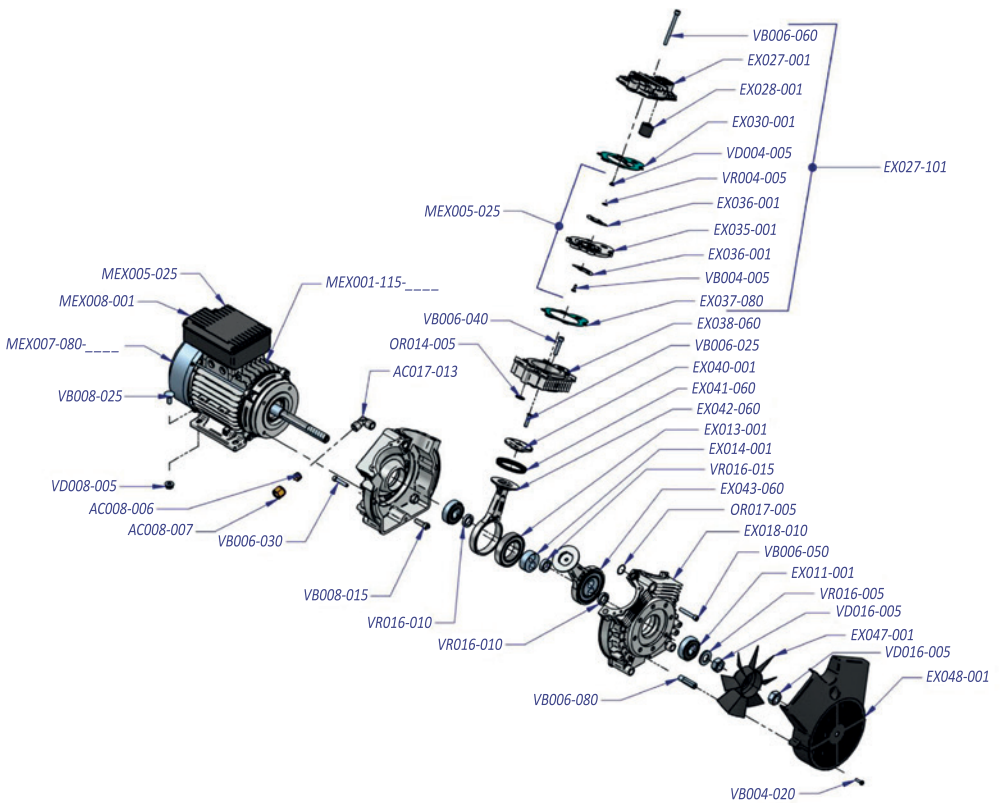
TJEP 25/240-2





PART NO.	DESCRIPTION
1127250022	Pressure Switch 1/4" (start valve open)
AC001-004-002	Pressure Switch complete for TJEP 25/240-2
AC002-051	Pin plug SHUKO 1,5 m
2381011	Safety valve 8 BAR PED
4385094	Pressure regulator MIGNON Pos.1
2381200	Manometer 40 mm 1/4" Bar/Psi
2381240	Manometer 50 mm 1/4" Bar/Psi
AC006-001	Universal Coupler 1/4" Male
AC007-005	Condensate drain valve
AC008-002	Not return valve 3/8" complete for tube Rilsan
AC008-004	Ogive for tube blue Rilsan
AC008-005	Nut for tube blue Rilsan
AC009-102	Rubber food support 24 mm
AC011-006	Blue Rilsan tube for TJEP 25/240-2
AC014-004	Closure plug
AC015-002	Nipple

PART NO.	DESCRIPTION
AC021-001	Nut for connection
AC021-002	Connection
1120013304	Wheel
AC024-901	Safety washer
AC030-251-3001	Tank TJEP 25/240-2 "black"
AC013-004	Aluminum tube for unit pump
AC013-005	Aluminum tube for unit pump
AC026-061	Flexible tube for unit pump



PART NO.	DESCRIPTION
AC008-006	Ogive for aluminum tube 12mm
AC008-007	Nut for tube 12 mm aluminum
AC017-130	Pipe felling "L"
EX011-001	Bearing for compressor monobloc
EX013-001	Bearing for connecting rod
EX014-001	Handspike socket
EX018-010	Compressor Monobloc
EX027-001	Head
EX027-101	Complete Head
EX028-001	Filter
EX030-001	Gasket head
EX035-001	Valve plate
EX035-101	Valve plate complete
EX036-001	Valve
EX037-080	Gasket cylinder 0,8
EX037-050	Gasket cylinder 0,5
EX037-030	Gasket cylinder 0,3
EX038-060	Cylinder
EX040-001	Piston top
EX041-060	Piston seal
EX042-060	Connecting rod
EX043-060	Complete connecting rod
EX047-001	Plastic fan
EX048-001	Plastic cover fan
MEX001-115-3001	Electric motor 1,5 Hp 230 Volt 50 Hz "RED"
MEX001-115-9010	Electric motor 1,5 Hp 230 Volt 50 Hz "WHITE"
MEX005-016	Condenser 16 µF
MEX005-025	Condenser 25 µF
MEX005-036	Condenser 36 µF
MEX005-040	Condenser 40 µF
MEX008-001	Cover condenser
MEX007-080-3001	Metallic cover fan "RED"
MEX007-080-9010	Metallic cover fan "WHITE"
OR014-005	O-ring
OR017-005	O-ring
VB004-005	Screw
VB004-005	Screw

PART NO.	DESCRIPTION
MEX005-036	Condenser 36 µF
MEX005-040	Condenser 40 µF
MEX008-001	Cover condenser
MEX007-080-3001	Metallic cover fan "RED"
MEX007-080-9010	Metallic cover fan "WHITE"
OR014-005	O-ring
OR017-005	O-ring
VB004-005	Screw
EX040-001	Piston top
EX041-060	Piston seal
EX042-060	Connecting rod
EX043-060	Complete connecting rod
EX047-001	Plastic fan
EX048-001	Plastic cover fan
MEX001-115-3001	Electric motor 1,5 Hp 230 Volt 50 Hz "RED"
MEX001-115-9010	Electric motor 1,5 Hp 230 Volt 50 Hz "WHITE"
MEX005-016	Condenser 16 µF
MEX005-025	Condenser 25 µF
MEX005-036	Condenser 36 µF
MEX005-040	Condenser 40 µF
MEX008-001	Cover condenser
MEX007-080-3001	Metallic cover fan "RED"
MEX007-080-9010	Metallic cover fan "WHITE"
OR014-005	O-ring
OR017-005	O-ring
VB004-005	Screw



KYOCERA UNIMERCO Fastening A/S
Drejervej 2
DK-7451 Sunds
Tlf. +45 97 14 14 40
Fax +45 97 14 14 86
tjep@kyocera-unimerco.com

www.tjep.eu