


Paged

Synergy of nature
and technology

 sklejkapaged.pl

 Softwood plywood surface
classification

Surface appearance classification of softwood plywood according to European norm PN-EN 635-3.



The standard gives general classification rules for the surface appearance of hardwood plywood according to both: defects inherent to wood characteristics and defects resulting from the manufacturing process. The standard covers hardwood plywood only. Plywood class is determined on the basis of the appearance of the surface. The plywood class description specifies the class of the right side first and then the class of the left side, e.g. Class II /III.

Class I

Surface appearance classification determined by **wood characteristics**

ALLOWED

- ✓ Pin knots
Allowed: 3 pcs/m²
- ✓ Knots: sound, intergrown, light and dark
Allowed up to 15 mm in diameter individually and 30 mm maximum when grouped; small shakes allowed.
- ✓ Black knots, intergrown knots, loose knots, knot holes
Allowed up to 6mm in diameter when filled; 2pcs /m²
- ✓ Open shakes, open splits in spliced veneer
Allowed up to 1/10 of the sheet's length and up to 3mm width, 3 pcs/m when filled
- ✓ Closed shakes

NOT ALLOWED

- ✗ Inbark
- ✗ Resin blemishes

Surface appearance classification determined by **manufacturing process**

ALLOWED

- ✓ Knotting and patching:
 - a) Wooden inserts
 - b) WedgesAllowed when filled and complete, 5 pcs/m²
- ✓ Edge defects caused by sanding, cutting (fringe), veneer shortage
Allowed: up to 2 mm wide along the edge

NOT ALLOWED

- ✗ Overlap ridges
- ✗ Air pockets
- ✗ Scratches, grooves, ridges
- ✗ Uneven sanding
- ✗ Face veneer oversanding
- ✗ Glue stains
- ✗ Metal inclusions

Class I



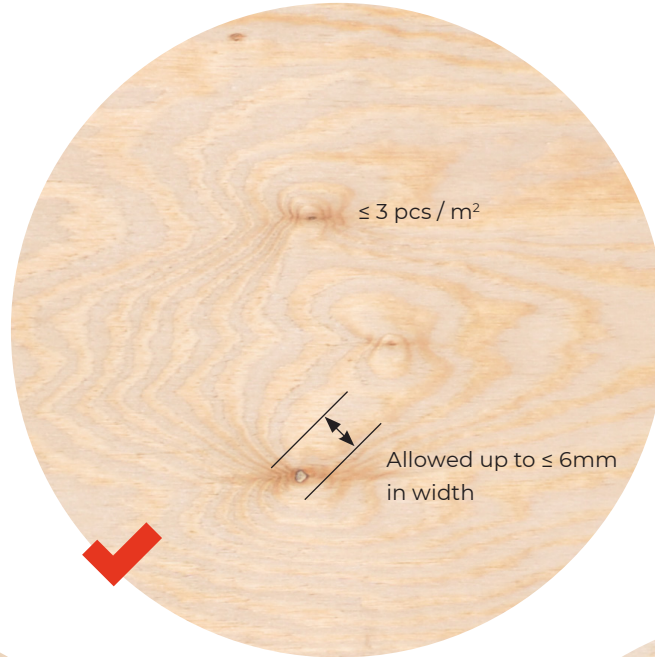
Class I

Wooden inserts



$\leq 5 \text{ pcs} / \text{m}^2$

Pin knots and open shake



Class II

Surface appearance classification determined by **wood characteristics**

ALLOWED

- ✓ Pin knots
- ✓ Knots: sound, intergrown, light and dark
Allowed up to 50 mm in diameter; small shakes allowed.
- ✓ Black knots, intergrown knots, loose knots, knot holes
Allowed up to 25mm in diameter when filled; up to 5mm, when open; 6pcs/m²
- ✓ Open shakes, open splits in spliced veneer
Allowed up to 1/3 of the sheet's length and up to 10mm width, 3 pcs/m. All shakes of 2 mm and more must be filled.
- ✓ Closed shakes
- ✓ Resin canals and pockets; inbark, light and dark
Allowed up to 6 mm in width when filled
- ✓ Resin blemishes
Allowed in moderation
- ✓ Timber structure flaws (diagonal grain, swirly grain, burls, bud traces)
Allowed when moderate
- ✓ Sound discoloration
Dopuszcza się nieznaczne różnicowanie naturalnej barwy drewna

NOT ALLOWED

- ✗ Biological damage (wormholes, parasitic plants, microorganisms)
No traces of parasitic plants allowed. Hollow corridors and wormholes are allowed of 3mm in diameter vertically to the sheet's surface, 10 pcs/m²

Surface appearance classification determined by **manufacturing process**

ALLOWED

- ✓ Open shakes
Allowed when filled with width of 1 mm and more – 1pc/m of the sheet's width
- ✓ Overlap ridges
Allowed up to 100 mm length, 1 pc/m²
- ✓ Scratches, grooves, ridges
Allowed when moderate
- ✓ Uneven sanding
Allowed when moderate
- ✓ Glue stains
Allowed when moderate
- ✓ Knotting and patching
 - a) Wooden inserts
 - b) Wedges
Allowed when filled and complete
- ✓ Edge defects caused by sanding, cutting (fringe), veneer shortage
Allowed: up to 5 mm wide along the edge

NOT ALLOWED

- ✗ Face veneer oversanding
- ✗ Metal inclusions
- ✗ Air pockets

Class II

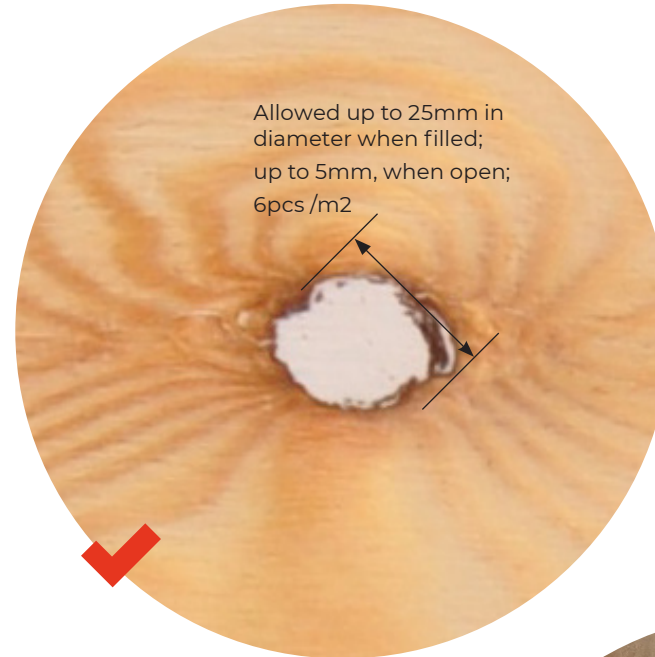


Class II

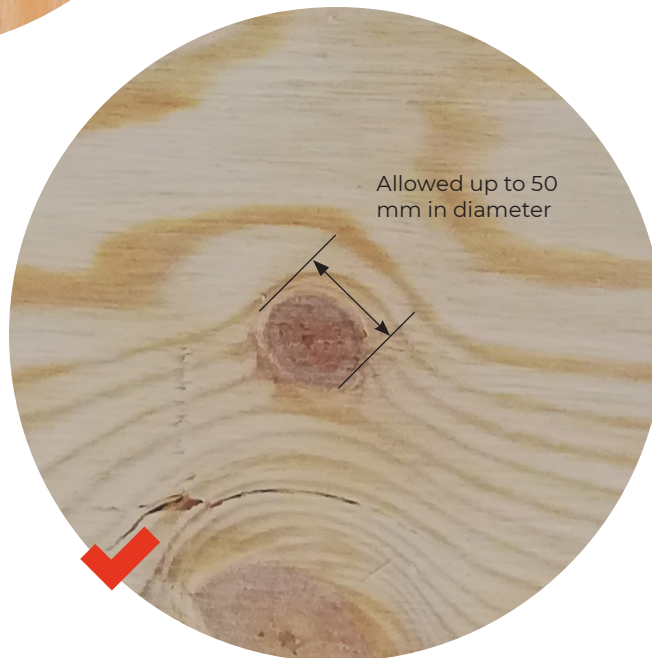
Resin blemish



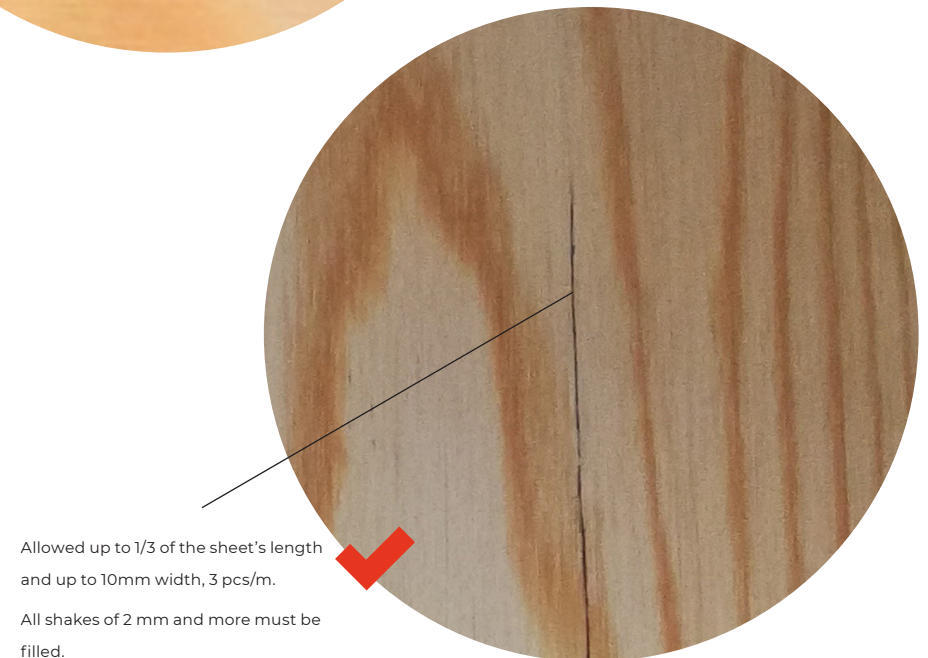
Filled knot



Sound knot



Open shake



Class II



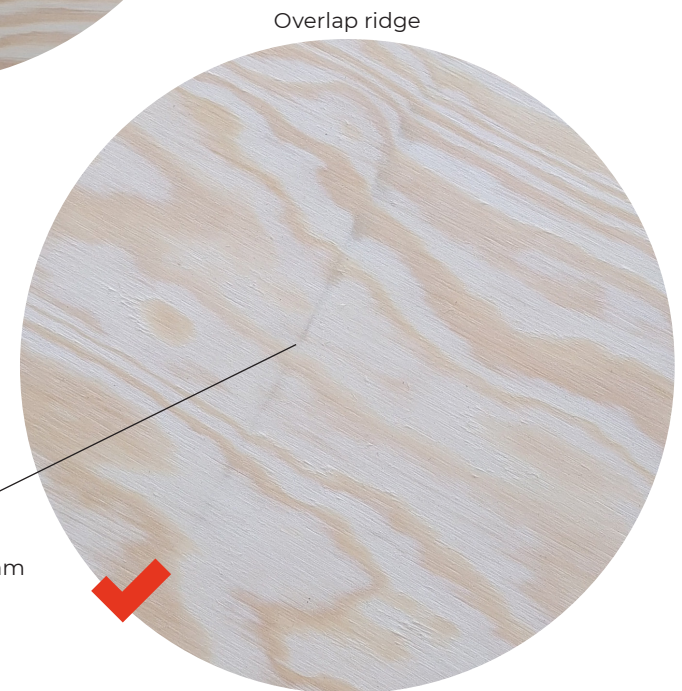
Sound discoloration



Wooden insert



Uneven sanding



Overlap ridge

Allowed up to 100 mm
length, 1 pc/m²

Class III

Surface appearance classification determined by **wood characteristics**

ALLOWED

- ✓ Pin knots
- ✓ Knots: sound, intergrown, light and dark
Allowed up to 50 mm in diameter.
- ✓ Black knots, intergrown knots, loose knots, knot holes
Allowed up to 40mm in diameter
- ✓ Open shakes, open splits in spliced veneer
Allowed up to ½ of the sheet's length and up to 15mm width, 3 pcs/m of the sheet's width.
- ✓ Closed shakes
- ✓ Resin canals and pockets; inbark, light and dark
Allowed up to 40 mm in width
- ✓ Resin blemishes
- ✓ Timber structure flaws (diagonal grain, swirly grain, burls, bud traces)
- ✓ Sound discoloration

Surface appearance classification determined by **manufacturing process**

ALLOWED

- ✓ Overlap ridges Allowed 2 pcs/m²
- ✓ Scratches, grooves, ridges
- ✓ Uneven sanding
- ✓ Face veneer oversanding
Allowed up to 10% of total sheet's surface
- ✓ Glue stains
Allowed up to 15% of total sheet's surface
- ✓ Knotting and patching:
 - a) Wooden inserts
 - b) Wedges
Allowed when filled and complete
- ✓ Naprawy – wypełnienie syntetyczne
Dopuszczalne w granicach kategorii, której najbardziej odpowiadają
- ✓ Edge defects caused by sanding, cutting (fringe), veneer shortage
Allowed: up to 10 mm wide along the edge

NOT ALLOWED

- ✗ Air pockets
- ✗ Metal inclusions

Class III

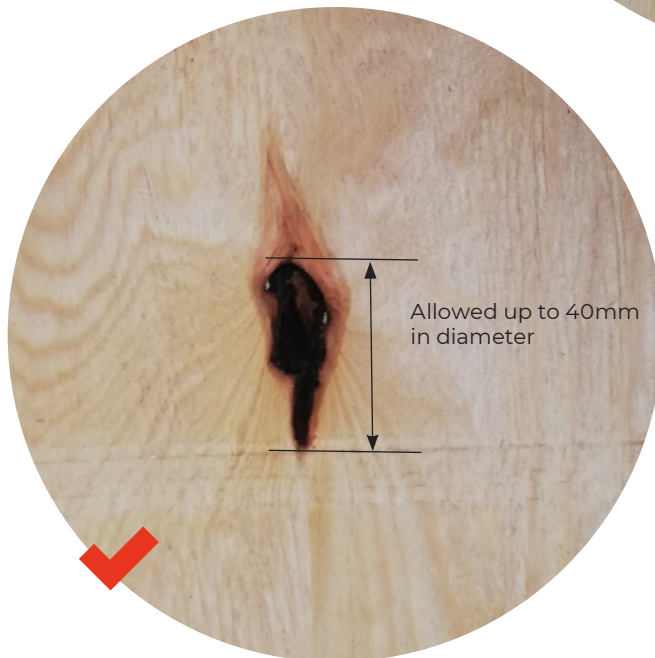


Class III

Sound knots



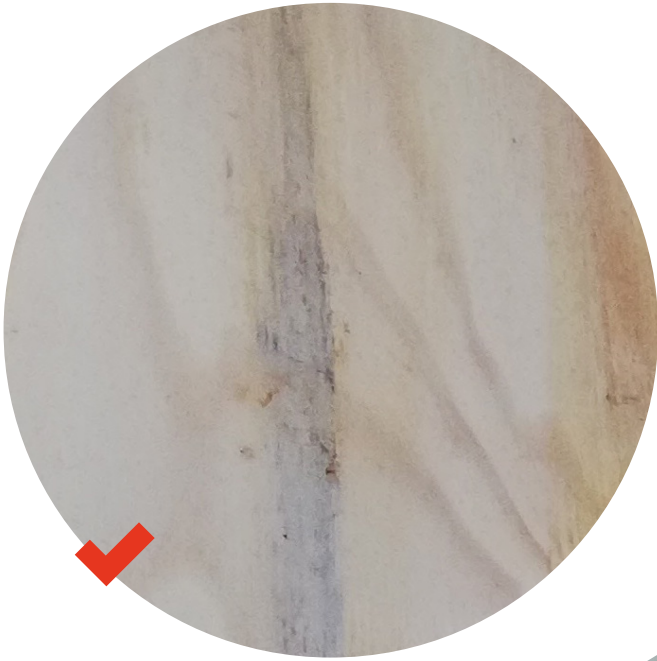
Black knot



Synthetic filling



Class III



Class IV

Surface appearance classification determined by **wood characteristics**

ALLOWED

- ✓ Pin knots
- ✓ Knots: sound, intergrown, light and dark
Allowed without restrictions
- ✓ Black knots, intergrown knots, loose knots, knot holes
Allowed without restrictions
- ✓ Open shakes, open splits in spliced veneer
Allowed without restrictions in length and up to 25 mm in width
- ✓ Closed shakes
- ✓ Resin canals and pockets; inbark, light and dark
Allowed without restrictions
- ✓ Resin blemishes
- ✓ Timber structure flaws (diagonal grain, swirly grain, burls, bud traces)
- ✓ Sound discoloration

Surface appearance classification determined by **manufacturing process**

ALLOWED

- ✓ Overlap ridges
Allowed without restrictions
- ✓ Scratches, grooves, ridges
- ✓ Uneven sanding
- ✓ Face veneer oversanding
Allowed up to 20% of total sheet's surface
- ✓ Glue stains
- ✓ Knotting and patching:
 - a) Wooden inserts
 - b) Wedges
Allowed when filled and complete
- ✓ Naprawy – wypełnienie syntetyczne Bez ograniczeń
- ✓ Edge defects caused by sanding, cutting (fringe), veneer shortage
Allowed: up to 10 mm wide along the edge

NOT ALLOWED

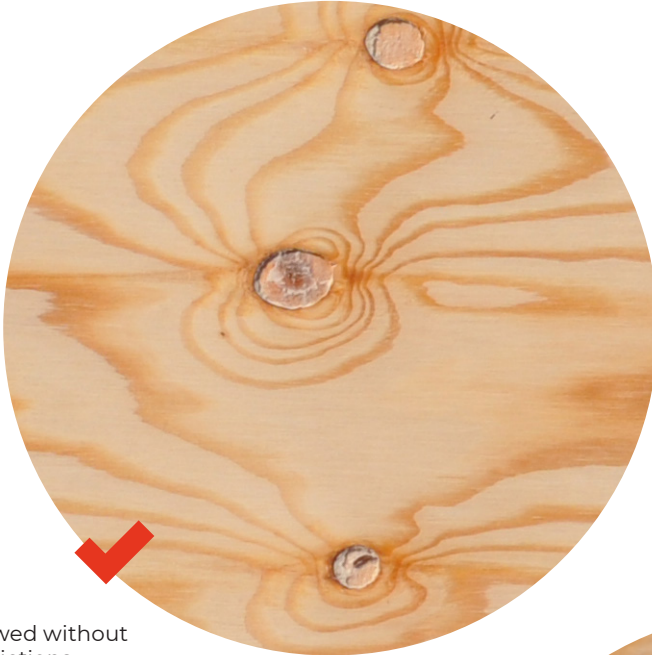
- ✗ Air pockets
- ✗ Metal inclusions

Class IV



Class IV

Knot holes



Allowed without restrictions

Wooden wedge



Black knot



Allowed without restrictions

Knot filling and patching upon request only.

Class IV

