

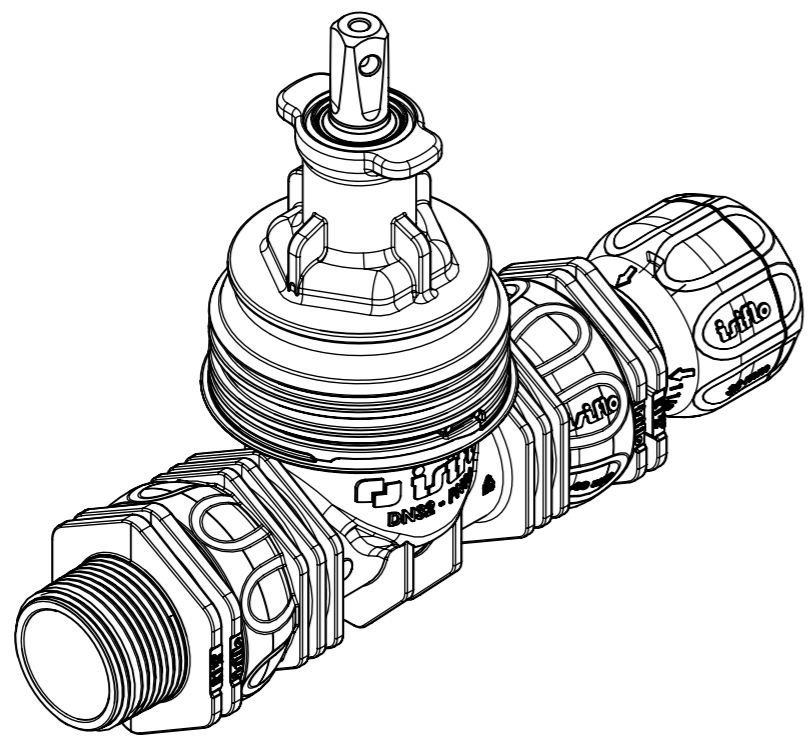
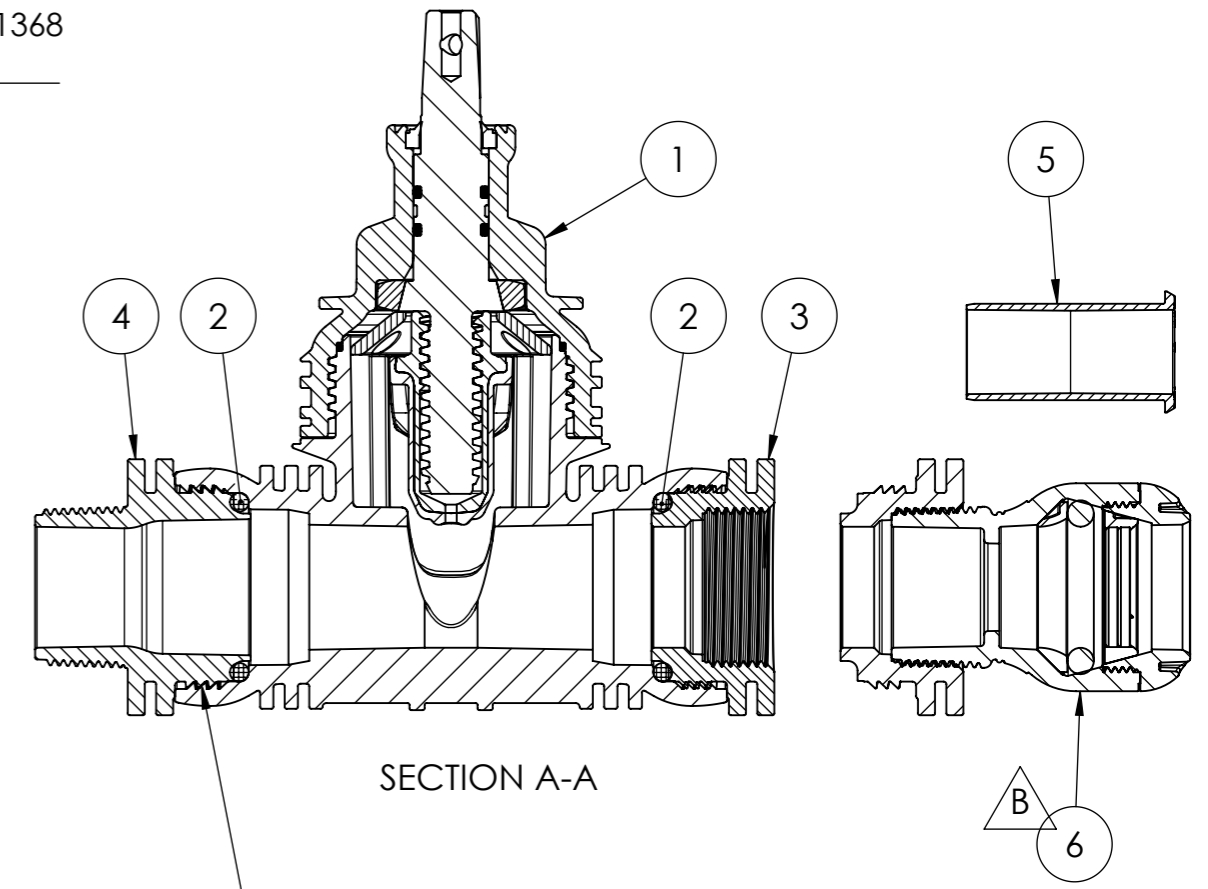
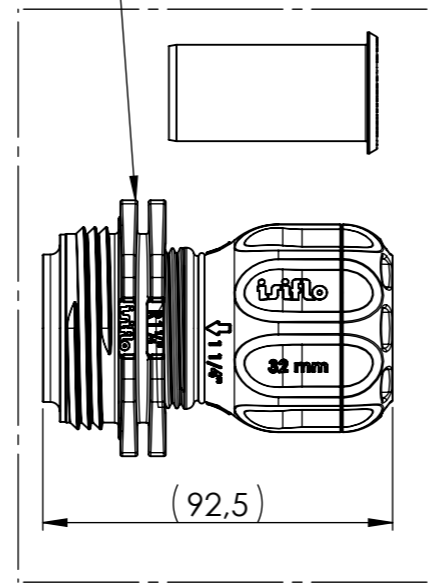
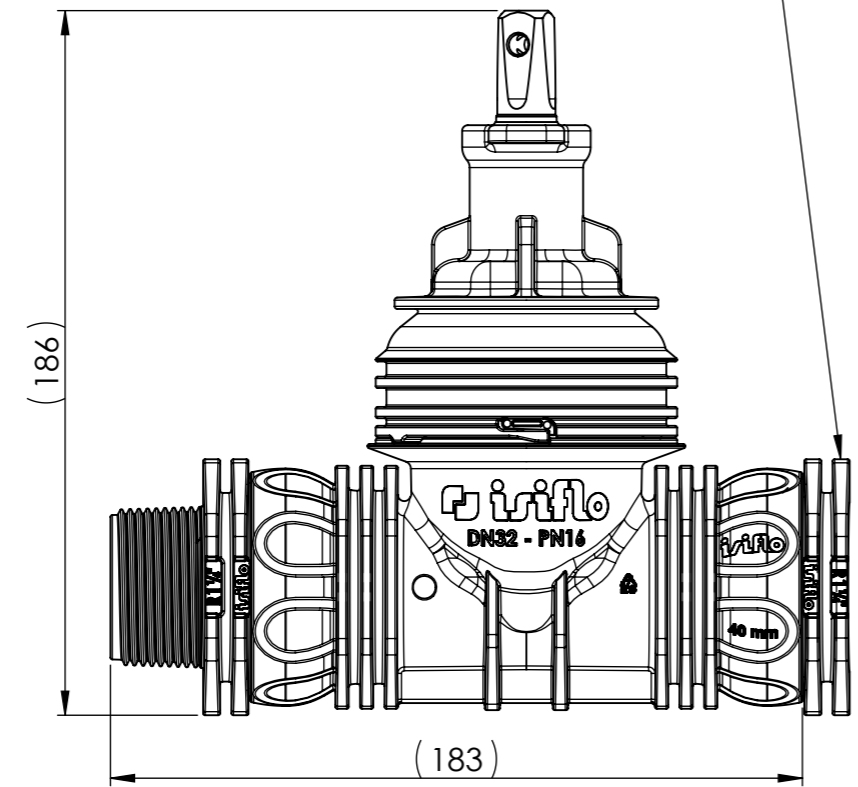
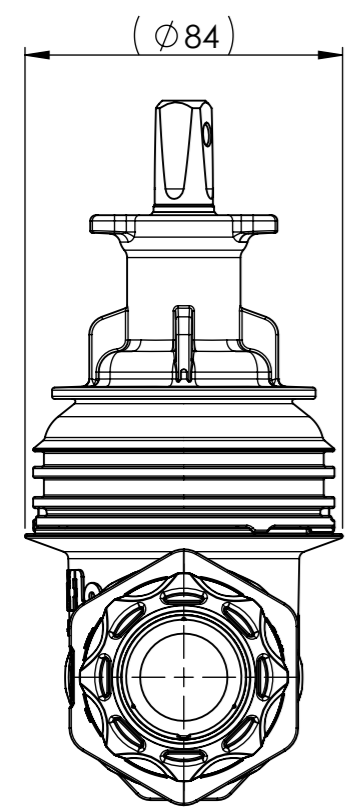
REV.	DESCRIPTION	ECO (Y/N)	REVISION BY / DATE	APPROVED BY / DATE
B	Replaced T148 adapter and Type 105 with pre assembled Type 136 adapter.		JSB / 22.03.09	AMU / 22.03.11

Premontert for bruk av anboringsverktøy.
Preassembled for use with tapping tool.

Delsammenstilling - 8211368
Subassembly - 8211368

Gjengeforbindelse skal limes med Loctite 638.
Thread connection to be glued with Loctite 638.

A
B
C
D
E
F



ITEM NO.	Part&Dim	QTY.	Material	Weight [g]	Volume [mm ³]	Article Number
6	Assembly 40mm x 32mm	1		161.40		8211368
5	Support liner 32x3,0 GW-SDR11	1	Grilamid LV-65H FWA	12.64	7658.39	8211804
4	Thread Adapter 40mm x R1 1/4"	1	PA-GF, RWG1014-820	84.02	52513.48	8212475
3	Composite to Thread Adapter 40 x 1 1/4"	1	PA-GF, RWG1014-820	56.58	35360.78	8212485
2	O-ring 40mm (40x5mm)	2	Rubber-W, RWG1015-820	2.94	2775.83	3059240
1	Gate Valve 40mm Pre assembly	1		1413.82		3087005

TOTAL WEIGHT ASSEMBLY [g]: 1734.34		NOTE:	
CAD:		GENERAL TOLERANCE	SCALE
<small>This drawing is property of ISIFLO AS. The right to use this drawing / description belongs to ISIFLO AS. The drawing must not be copied, distributed or submitted to persons not concerned.</small>		1:2	
		FINISH	
DESIGNER / DATE: Jonas Solhaug Bossum / 22.01.07			
PART & DIMENSION: Type 200 Tapping valve 40mm assembly			
PRODUCT GROUP: Isiflo ECO LINE		REFERENCE DRAWING:	SHEET 1 OF 1

1 2 3 4