

**MODEL NO.**

**SABXL2M-MBH-d-04**

**PRODUCT LINE**

**Smart Alu Box XLarge**

**SPECIFICATIONS**

**Enclosure**

Die-casting aluminum: O-ring sealed  
Dichromate conversion with polyester powder coating  
Buna N

**Coating**

NEMA 4, 4X, 7, 8 IP66

**Environment**

Class I, Div. 1 & 2, Groups C and D, Ex d IIB T6

**Area Classification**

Stainless steel

**Fasteners**

Stainless steel Namur

**Shaft**

Two 3/4" NPT

**Conduit Entries**

Also available with two 1/2" or 3/4" BSPP, 1/2" NPT, M20-1.5  
2 SPDT CROUZET Mechanical Switches  
15A125-250 VAC  
8 - 10

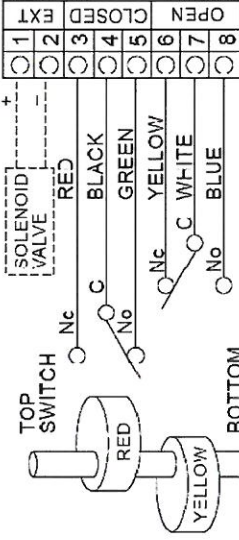
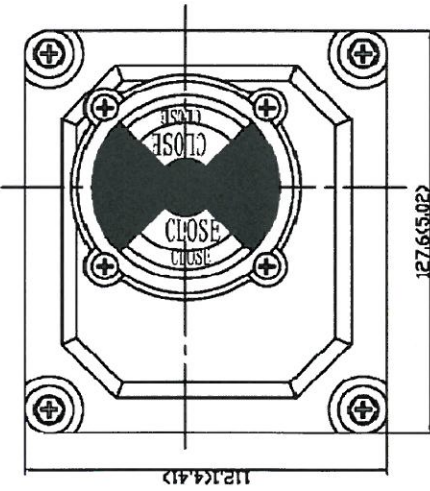
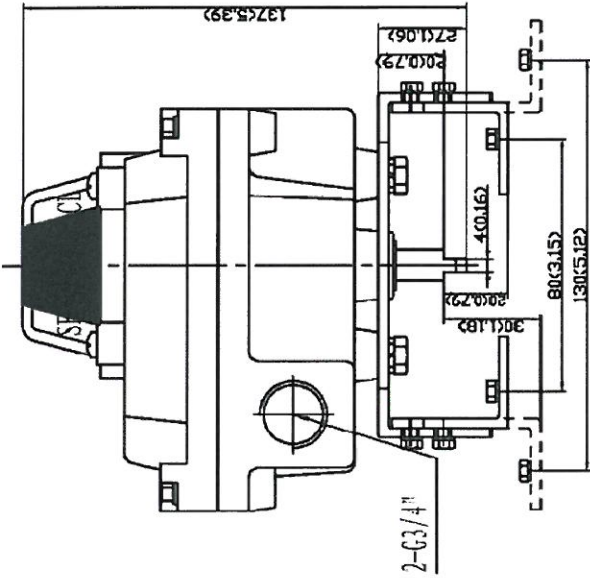
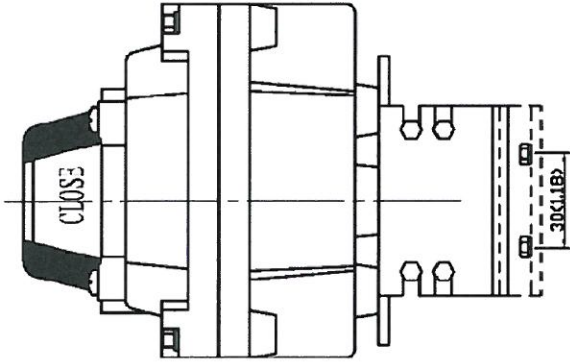
**Terminal Strip Contacts**

MB - 3.3: 30 x 80, 130 H:20, 30 (Carbon steel)

**Mounting Bracket**

-20°C - 85°C, low temperature execution -40°C

**Temperature Rating**



**AUTOMATION CENTER GERMANY**  
A Guntar Berge company

**ACG Automation Center Germany GmbH & Co. KG**  
Ifm Str. 14, D-88069 Tettnang-Bechlingen  
Tel. +49 7542 93820 Fax. +49 7542 938210  
info@acg-shop.com - www.acg-shop.com



# EG-Konformitätserklärung

D

GB

## EC Declaration of conformity

Die EG-Konformitätserklärung  
gilt für folgende Geräte der  
Produktfamilie:

The EC Declaration of  
conformity applies to units of  
the product family:

**Endschalterboxen mit mechanischen Schaltern 15A, 125-230V AC**  
**Limit switch boxes with mechanical switches 15A, 125-230V AC**

**ACG Art. Nr. SABXL2M-MBH-D-04**

Wir bestätigen die Übereinstimmung mit den grund-  
legenden Anforderungen der europäischen Richtlinie:

The basic requirements fulfill  
the European guidelines:

**ATEX 94/9/EG**

**ATEX 94/9/EC**

Geräte und Schutzsysteme zur  
bestimmungsgemäßen Verwendung  
in explosionsgefährdeten Bereichen

Equipment and Protective Systems  
intended for Use in Potentially  
Explosive Atmospheres

**Gruppe / group II    Kategorie / category 2**

**CE 0575    Ex II 2G EEx d IIB T6**

Folgende harmonisierte Norm(en)  
wurden angewandt:

The following harmonised standard(s)  
were applied:

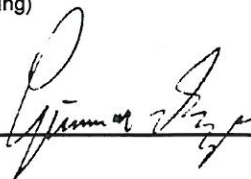
**IEC 60079-0:2004**  
**IEC 60079-1:2003**

Tettnang, den 28.05.2009

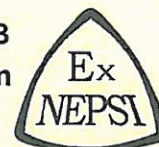
(Ort und Datum der Ausstellung)  
(Place and date of issue)

Gunnar Berge

(Name und Unterschrift)  
(Name and signature)



Remark: The Certificates from NEPSI are fully Accepted by FM of USA, PTB of Germany, TestSafe of Australia, LCIE of France and TIS of Japan



# EXPLOSION PROTECTION CERTIFICATE OF CONFORMITY

Cert No. GYB081129

This is to certify that the product

**Explosion Proof Valve Return Signaler**

manufactured by

**Wuxi Aphe Flow Smart Controls Maker Co., Ltd**

(Address: 9B Deyuan Mansion, 78# Wuai Road, Wuxi, Jiangsu, China)

which model is

**ALS-500 Series 220VAC**

Ex marking

**Ex d II B T6**

product standard

**Explosion Proof Valve Return Signaler Factory Standard**

drawing number

**ALS500-000**

has been inspected and certified by NEPSI, and that it conforms to **GB 3836.1-2000、GB 3836.2-2000**

This Approval shall remain in force until

**2013.03.17**

Remarks

1. Special conditions for safe use specified in the attachment to this certificate.
2. Degrees of protection provided by enclosure IP66.

Director



National Supervision and Inspection Centre for  
Explosion Protection and Safety of Instrumentation

Issued Date 2008.03.18

This Certificate is valid for products compatible with the documents and samples approved by NEPSI.




103 Cao Bao Road  
Shanghai 200233, China

<http://www.nepsi.org.cn>  
Email: [info@nepsi.org.cn](mailto:info@nepsi.org.cn)

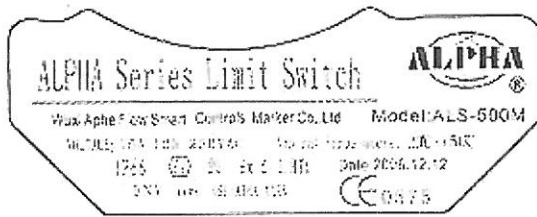
Tel:0086 21 64368180  
Fax:0086 21 64844580



## IECEX Ex TEST REPORT COVER

ExTR Reference Number .....	
ExTR Free Reference Number .....	B09-025-WT
Complied by + signature (ExTL) .....	Zhao Hong 
Reviewed by + signature (ExTL) .....	Xu Jianping 
Approved by + signature (ExCB) .....	
Date of issue .....	2009-04-10
Ex Certification Body (ExCB) .....	
Address .....	
Ex Testing Laboratory (ExTL) .....	Shanghai Inspection and Testing Institute of Instruments and Automatic Systems(SITIIAS) National Supervision and Inspection Center for Explosion Protection and Safety of Instrumentation(NEPSI)
Address .....	103 Cao Bao Road, Shanghai 200233, China
Applicant's name .....	Wuxi St.Hans Air Controls Export & Import Co.,Ltd.
Address .....	No.27-1 Longshan Rd., New Area Wuxi, 214028, Jiangsu, P.R.China
Standards .....	IEC 60079-0:2004, IEC 60079-1:2003
Test procedure .....	IECEX Scheme
Test Report Form No. ....	ExTR Cover_1
TRF Originator.....	Underwriters Laboratories Inc. (UL)
Master TRF .....	dated 2006-08
<b>Instructions for Intended Use of Cover Sheet:</b>	
This document is to be compiled and reviewed by the ExTL, with the ExCB giving the final approval, or compiled by the ExCB without the involvement of the ExTL. It is to serve as the sole cover for an ExTR package, which may be comprised of a single ExTR document or multiple ExTR documents. This ExTR Cover is to be completed and attached to the completed ExTR package.	
<b>Copyright © 2006 International Electrotechnical Commission Scheme for Certification to Standards Relating to Equipment for use in Explosive Atmospheres (IECEX), Geneva, Switzerland. All rights reserved.</b>	
This publication may be reproduced in whole or in part for non-commercial purposes as long as the IECEx is acknowledged as copyright owner and source of the material. IECEx takes no responsibility for and will not assume liability for damages resulting from the reader's interpretation of the reproduced material due to its placement and context.	
Test item description .....	Limit Switch
Trademark .....	ALPHA
Model/type reference .....	ALS-500M, ALS-600M
Manufacturer .....	Wuxi Aphe Flow Smart Controls Maker Co.,Ltd.
Address .....	A4-406 Standard Factory,Li Yuan Economic Developing District,Wuxi,Jiangsu,P.R.China.
Code (e.g. Ex _ II_ T_).....	 II 2 G Ex d II BT6
Rating .....	15A, 125-250VAC

Copy of Marking Plate



**Particulars: test item vs. test requirements**

Classification of installation and use ..... : portable / stationary / hand-held  
 Ingress protection ..... : IP66  
 Rated ambient temperature range (°C)..... : -20°C ~ +50°C

**General remarks:**

**General product information:**

ALS- □00M

5: Aluminum Alloys Enclosure  
 6: Stainless Steel Enclosure

**Manufacturer's Documents**

Title:	Drawing No.:	Rev. Level:	Date:
Assembly drawing	ALS500-000	-	2009.02.08
Assembly drawing	ALS600-000	-	2009.02.08
Body(2 sheets)	ALS500-001	-	2009.02.08
Cover	ALS500-002	-	2009.02.08
Body(2 sheets)	ALS600-001	-	2009.02.08
Cover	ALS600-002	-	2009.02.08
Indicator O-ring	ALS210-013	-	2009.02.08
Shaft O-ring	ALS210-015	-	2009.02.08
Shaft Sleeve	ALS400-007	-	2009.02.08
Body O-ring	ALS500-003	-	2009.02.08
Shaft	ALS500-007	-	2009.02.08
Label	ALS500-010	-	2009.02.08
Earthing Label	ALS500-014	-	2009.02.08
Warning Label	ALS500-015	-	2009.02.08
Body O-ring	ALS600-005	-	2009.02.08
Label	ALS600-010	-	2009.02.08