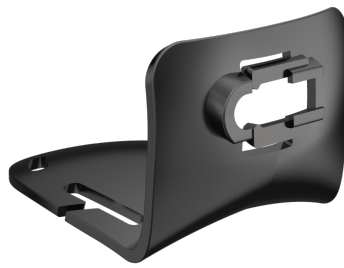




— PRODUCT DATA SHEET

Helmet Connecting Kit Type H



Helmet Connecting Kit Type H

PRODUCT DESCRIPTION

With the Helmet Connecting Kit Type H from Ledlenser it is very easy to reliably mount compatible headlamps on helmets. Thanks to hook-and-loop straps, the system can be quickly, conveniently and flexibly attached to bicycle helmets and other helmets with ventilation slots. Alternatively, strong adhesive pads can be used. Thanks to the Ledlenser Connecting System, the lamp can easily be attached to the bracket to perfectly illuminate the surroundings.

USABLE WITH

H15R Core, H15R Work, H19R Core, H19R Signature, H5 Core, H5R Core, H5R Work, H7R Core, H7R Signature, H7R Work

TECHNICAL DATA

Length [mm]	48
Width [mm]	71
Height [mm]	31
Weight without batteries [g]	22
Material	PC

PACKAGING INFORMATION

Type of packaging	Box
Scope of delivery	Helmet connecting kit
Item No.	502314
Customs tariff number	3926909790

SINGLE PACKAGE

Dimensions W x H x D [cm]	7.2 x 12 x 5.5
Gross weight [g]	43.5
GTIN-13	4058205023986

INNER CARTON

Unit	24
Dimensions W x D x H [cm]	36 x 25.5 x 16
Gross weight [g]	1274
GTIN-13	4058205023979

EXPORT CARTON

Unit	96
Dimensions W x D x H [cm]	39.5 x 29 x 69.5
Gross weight [kg]	5.96
GTIN-13	4058205023962

FOOTNOTES

The information pertaining to scope of delivery, appearance, performance, dimensions and weight corresponds to the information available at the time of publication. In the interest of product development, we reserve the right to change scope of delivery, appearance, design and color without prior notice. Product images may vary from the actual products and may show optional accessories which can be purchased separately. Errors and omissions excepted.