



ARIDA[®] PRO

Storm SLGR 1600X Dehumidifier



▲ **Distinct Features:**

- 1. SLGR Microchannel Technology**
- 2. Convenient storage for cable and drain tube**
- 3. Condensate pump**
- 4. Epoxy powder coating for corrosion protection**
- 5. Quick access to internal service**
- 6. Quick connector for Drain Tube and Cable**
- 7. More capacity, less power consumption**



▼ **Convenient water pipe and power line storage:**
You can store the water pipe and power line in the side box.



▼ **Storm SLGR 1600X** with rugged rotational molding housing operates well in severely damp environment after flood damage. With **SLGR Microchannel**, it removes plenty amounts of moisture from damp air environment and returns a dry house environment.



Storm SLGR 1600X Dehumidifier

Specifications

Features	Storm SLGR 1600X
CE, ETL	✓
Compressor Type	Rotary
More Thorough, And More Quick	✓
Ducting options	✓
Condensate Pump	✓
Telescope Handle	✓
Water Full protection	✓
Environmental R410A Refrigerant	✓
Memory Starting	✓
Washable Air Filter	✓
Wheels	✓
Rotational Moulded Body	✓
Convenient Storage for Cable / Hose	✓
Low Temperature	✓
Quick connection to Cable/Hose	✓

Specifications	Storm SLGR 1600X
SLGR Microchannel	Excellent In Low Humidity and High Temperature
Power	115V/60HZ, 220V/50HZ
Size For	Up to 7,000Sq.FT
Filter	Pre-filter
Air flow	400CFM, 680CMH
Sound Pressure Level	<55DBA
Refrigerant	R410A
Wheel	2 Samll Wheel
Draining	Condensate Pump
Defrosting Control System	Automatic Defrosting
Functioning Temperature Range	1~40°C
Functioning Humidity Range	35~95%
Capacity 115V(80°F-60%)	160Pints
Capacity 220V(30°-80%)	160L
COP(115v/60Hz)	2.7L/Kwh at 80°F/60%
Weight	82lbs(42KG)
Dim(W*H*D)	500*420*770mm
Loading quantity	40"H: 280Sets; 40": 224Sets; 20": 104Sets

PROVEN PERFORMANCE

Storm SLGR 1600X with great COP 3.1L/Kwh at 80°F/60%(115V/60Hz) and huge capacity 160PPD at AHAM condition makes CE, ETL certified in first class. Moreover, the unit has a tension rod on its top for convenient transport.

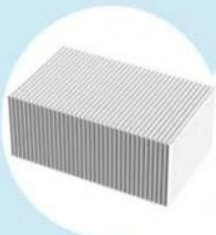
As for the tough environment that flood disasters might have, rotational molding housing is rugged enough to endure severe collision and corrosion found in water damage restoration and construction. It handles severe environment after flooding and takes much more moisture from damp housing.



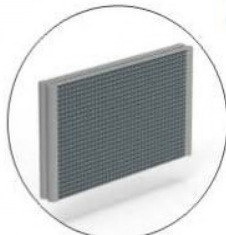
1. During the dis-assembly of unit, the front board can be take away directly without the interference of any power lines.



2. Disassemble a side plate, you can bring out circuit board from the unit without disassembling the whole unit.



Cold Energy Storage



Microchannel cold and heat exchanger



Pump

