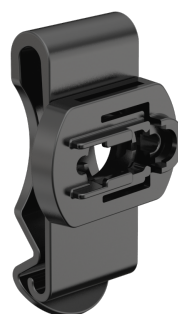




— PRODUCT DATA SHEET

Belt Clip Type A



Belt Clip Type A

PRODUCT DESCRIPTION

With this practical clip, many Ledlenser lamps or batteries can easily be attached to the belt thanks to the Ledlenser Connecting System. The lamp can be rotated through 360° in the robust fixation and thus becomes a flexible light source, while hands and head remain free. Compatible Ledlenser flashlights additionally require the respective Lamp Adapter to use the system.

USABLE WITH

H15R Core, H15R Work, H19R Core, H19R Signature, H7R Signature, H7R Work, P5R Work, P6R Work, P7R Work

TECHNICAL DATA

Length [mm]	43
Width [mm]	25
Height [mm]	73
Weight without batteries [g]	19
Material	PC

PACKAGING INFORMATION

Type of packaging	Box
Scope of delivery	Belt clip
Item No.	502253
Customs tariff number	3926909790

SINGLE PACKAGE

Dimensions W x H x D [cm]	7.2 x 5 x 5.5
Gross weight [g]	33.5
GTIN-13	4058205022682

INNER CARTON

Unit	12
Dimensions W x D x H [cm]	18 x 11.5 x 16
Gross weight [g]	477.5
GTIN-13	4058205022675

EXPORT CARTON

Unit	48
Dimensions W x D x H [cm]	39.5 x 26.5 x 20.5
Gross weight [kg]	2.30
GTIN-13	4058205022668

FOOTNOTES

The information pertaining to scope of delivery, appearance, performance, dimensions and weight corresponds to the information available at the time of publication. In the interest of product development, we reserve the right to change scope of delivery, appearance, design and color without prior notice. Product images may vary from the actual products and may show optional accessories which can be purchased separately. Errors and omissions excepted.