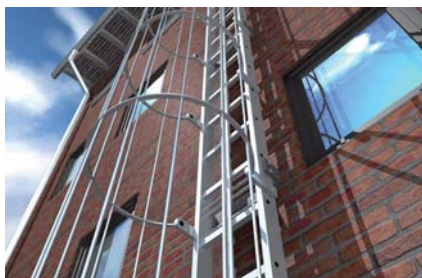


The versatile injection mortar for anchorings in masonry and cracked concrete



Rescue ladders



Column bases

BUILDING MATERIALS

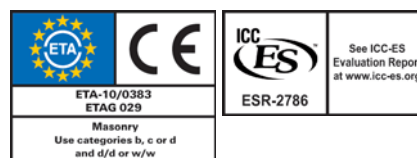
Approved for anchorings in:

- Concrete C20/25 to C50/60, cracked and non-cracked
- Hollow blocks made from lightweight concrete
- Hollow blocks made from concrete
- Vertically perforated brick
- Perforated sand-lime brick
- Solid sand-lime brick
- Aerated concrete
- Solid brick

Approved for:

- Rebar connections
- Remedial wall tie VBS 8
- Weather facing reconstruction system FWS II
- Stand-off installation Thermax

CERTIFICATES



ADVANTAGES

- The FIS V injection mortar has numerous system approvals, such as in cracked and non-cracked concrete, masonry and for special applications. FIS V is thus the universal injection mortar family with guaranteed reliability for practically all areas of application.
- FIS VW HIGH SPEED has a significantly shorter curing time than FIS V, thus also ensuring swift work progress even at low temperatures.
- FIS VS LOW SPEED with extended gelling time prevents premature curing of the mortar at higher temperatures and is ideally suited to large drill hole depths.
- The extensive range of accessories is ideally suited to the FIS V injection mortar family, increases the great flexibility of the system and thus allows for a broad range of applications.

APPLICATIONS

Injection mortar for use with:

- Threaded rods FIS A, see page 146
- Internal threaded anchor RG MI, see page 159
- Rebar anchor FRA, see page 179
- Concrete steel bars, see page 185
- Injection anchor sleeves FIS H, see page 167
- Aerated concrete centring sleeve PBZ, see page PL
- Remedial wall tie VBS 8, see page 187
- Weather facing reconstruction system FWS II, see page 189
- Anchorings in waterfilled drill holes (only FIS V 410 C)

FUNCTIONING

- The FIS V is a 2-component injection mortar based on vinyl ester hybrid.
- Resin and hardener are stored in two separate chambers and are not mixed and activated until extrusion through the static mixer.
- The injection cartridges are quick and easy to use with the fischer dispensers.
- Partially used cartridges can be reused, simply by changing the static mixer.

SEE ALSO



ANCHORS + SLEEVES

Page 144



DISPENSER

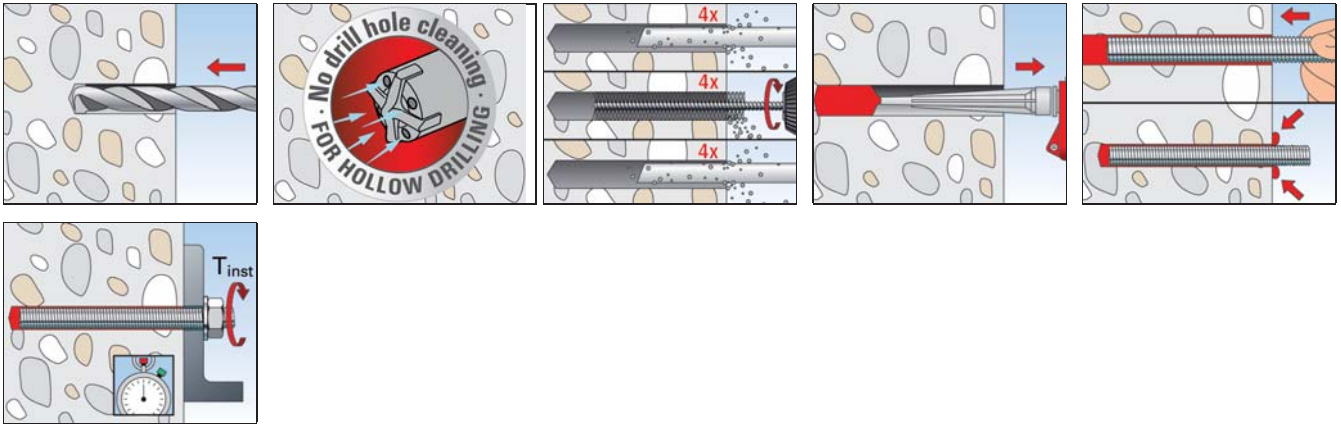
Page 195



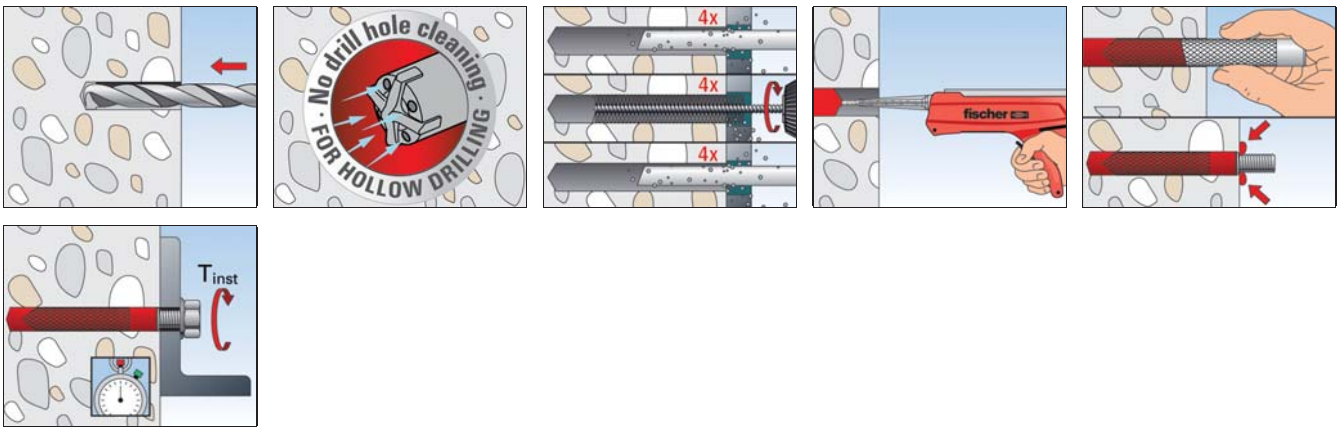
ACCESSORIES

Page 198

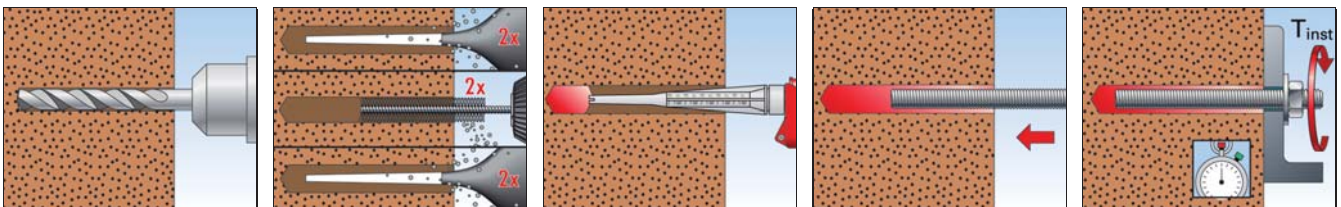
INSTALLATION IN CONCRETE WITH FIS V AND FIS A / RG M



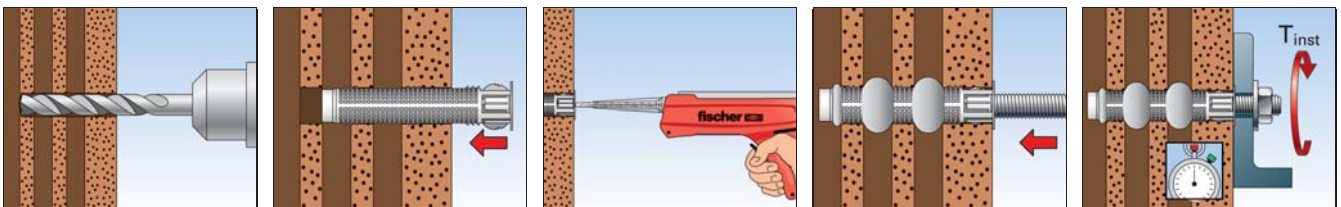
INSTALLATION IN CONCRETE WITH FIS V AND RG M I



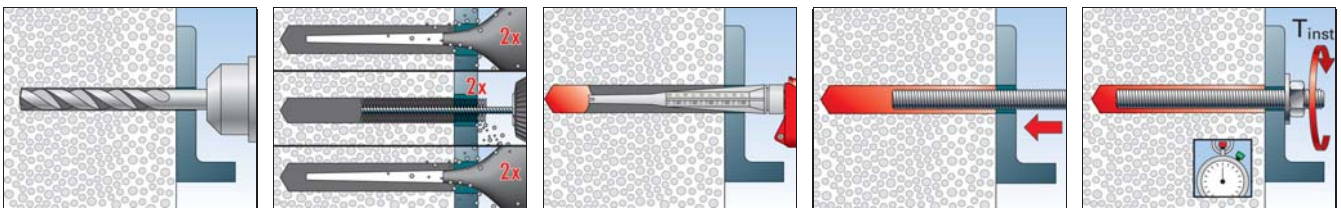
INSTALLATION IN SOLID BRICK WITH FIS V AND FIS A



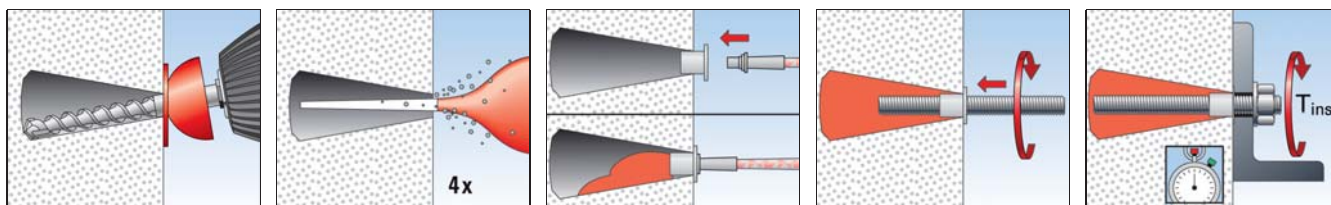
INSTALLATION IN HOLLOW BLOCKS WITH FIS V AND FIS HK + FIS A



INSTALLATION IN AERATED CONCRETE WITH FIS V AND FIS A / RG M



INSTALLATION IN UNDERCUT DRILL HOLE IN AERATED CONCRETE WITH FIS V AND FIS A / RG M



TECHNICAL DATA



Injection mortar **FIS V 300 T**



Injection mortar **FIS V 360 S**



Injection mortar **FIS V 410 C**



Static mixer **FIS MR Plus**

Item	Art.-No.	Approval			Languages on the cartridge	Scale unit	Contents	Sales unit
		DIBt	ETA	ICC				
FIS V 300 T	531573	●	■	▲	USA, RA, BR, MEX	150	1 cartridge 300 ml, 2 x FIS MR Plus	12
FIS V 360 S	094404	●	■	▲	DE, FR, NL, TR, HU, AR	180	1 cartridge 360 ml, 2 x FIS MR Plus	6
FIS V 360 S	094405	●	■	▲	EN, IT, PT, ES, ZH, JA	180	1 cartridge 360 ml, 2 x FIS MR Plus	6
FIS V 360 S	068435	●	■	▲	DA, SV, NO, FI, PL, EL	180	1 cartridge 360 ml, 2 x FIS MR Plus	6
FIS V 360 S	502283	●	■	▲	LT, LV, ET, UK, RU, KK	180	1 cartridge 360 ml, 2 x FIS MR Plus	6
FIS V 360 S	043994	●	■	▲	CS, SK, PL, HU, RO, RU	180	1 cartridge 360 ml, 2 x FIS MR Plus	6
FIS V 410 C	521431	●	■	▲	IT, EN, DE	200	1 cartridge 410 ml, 2 x FIS MR Plus	16
FIS V 410 C	534880	●	■	▲	PL, LT, LV, ET, RU	200	1 cartridge 410 ml, 2 x FIS MR Plus	12
FIS V 410 C	538131	●	■	▲	USA, RA, BR, MEX	200	1 cartridge 410 ml, 2 x FIS MR Plus	12
FIS MR Plus	545853	—	—	—	—	—	10 static mixer FIS MR Plus	10

TECHNICAL DATA



Injection mortar **FIS VW 300 T**



Injection mortar **FIS VW 360 S**



Injection mortar **FIS VW 380 C**



Static mixer **FIS MR Plus**

Item	Art.-No.	Approval		Languages on the cartridge	Scale unit	Contents	Sales unit
		DIBt	ETA				
FIS VW 300 T	507793	●	■	DE, EN, HR, SL, SR, BG	150	1 cartridge 300 ml, 2 x FIS MR Plus	12
FIS VW 300 T	507795	●	■	SV, DA, NO, CS, SK, PL, RU	150	1 cartridge 360 ml, 2 x FIS MR Plus	12
FIS VW 360 S	090753	●	■	DE, EN, FR, IT, NL, ES	180	1 cartridge 360 ml, 2 x FIS MR Plus	6
FIS VW 360 S	043997	●	■	CS, SK, PL, HU, RO, RU	180	1 cartridge 360 ml, 2 x FIS MR Plus	6
FIS VW 360 S	502284	●	■	RU, LT, LV, ET, UK, KK	180	1 cartridge 360 ml, 2 x FIS MR Plus	6
FIS VW 380 C	519328	●	■	CS, SK, PL	190	1 cartridge 380 ml, 2 x FIS MR Plus	12
FIS MR Plus	545853	—	—	—	—	10 static mixer FIS MR Plus	10

TECHNICAL DATA



Injection mortar
FIS VS 100 P



Injection mortar
FIS VS 150 C



Injection mortar
FIS VS 300 T



Injection mortar
FIS VS 360 S



Static mixer **FIS MR Plus**

Item	Art.-No.	Approval			Languages on the cartridge	Scale unit	Contents	Sales unit
		DIBt	ETA	ICC				
FIS VS 100 P	072525	●	■	▲	DE, EN, FR, IT, NL, ES	50	1 cartridge 100 ml, 2 x FIS MR Plus	6
FIS VS 150 C	045302	●	■	▲	DE, EN, FR, IT, NL, ES	70	1 cartridge 145 ml, 1 x FIS MR Plus	6
FIS VS 150 C Set	045303	●	■	▲	DE, EN, FR, IT, NL, ES	70	Set for hollow bricks: 1 cartridge 145 ml, 2 x FIS MR Plus, 6 x FIS H 16 x 85 K	6
FIS VS 300 T	093180	●	■	▲	DE, EN, FR, NL, ES, PT	150	1 cartridge 300 ml, 1 x FIS MR Plus	12
FIS VS 300 T	502285	●	■	▲	RU, LT, LV, ET, UK, KK	150	1 cartridge 300 ml, 1 x FIS MR Plus	12
FIS VS 300 T	044102	●	■	▲	CS, SK, PL, HU, RO, RU, EL	150	1 cartridge 300 ml, 1 x FIS MR Plus	12
FIS VS 300 T	093226	●	■	▲	PL, CS, DA, NO, SV, FI	150	1 cartridge 300 ml, 1 x FIS MR Plus	12
FIS VS 360 S	078664	●	■	▲	EN, ZH, ES, PT, JA	180	1 cartridge 360 ml, 2 x FIS MR Plus	6
FIS MR Plus	545853	—	—	—	—	—	10 static mixer FIS MR Plus	10



FIS V 360 S HWK small



FIS V 360 S HWK big



FIS V 360 S HWK big with dispenser FIS DM S

Item	Art.-No.	Approval			Languages on the cartridge	Contents	Sales unit
		DIBt	ETA	ICC			
FIS V 360 S HWK small	092430	●	■	▲	DE, FR, NL, TR, HU, AR	10 cartridges 360 ml, 20 x FIS MR Plus	1
FIS V 360 S HWK big	091936	●	■	▲	DE, FR, NL, TR, HU, AR	20 cartridges 360 ml, 40 x FIS MR Plus	1
FIS V 360 S HWK big	096554	●	■	▲	EN, IT, PT, ES, ZH, JA	20 cartridges 360 ml, 40 x FIS MR Plus	1
FIS V 360 S HWK big	503027	●	■	▲	CS, SK, PL, HU, RO, RU	12 cartridges 360 ml, 24 x FIS MR Plus, 1 x dispenser FIS DM S	1